


WAAS CH 82104 W02A	APP CRS 019°	Rwy Idg 6506 TDZE 300 Apt Elev 303
--	------------------------	---

RNAV (GPS) RWY 2

HEART OF GEORGIA RGNL (E2M)

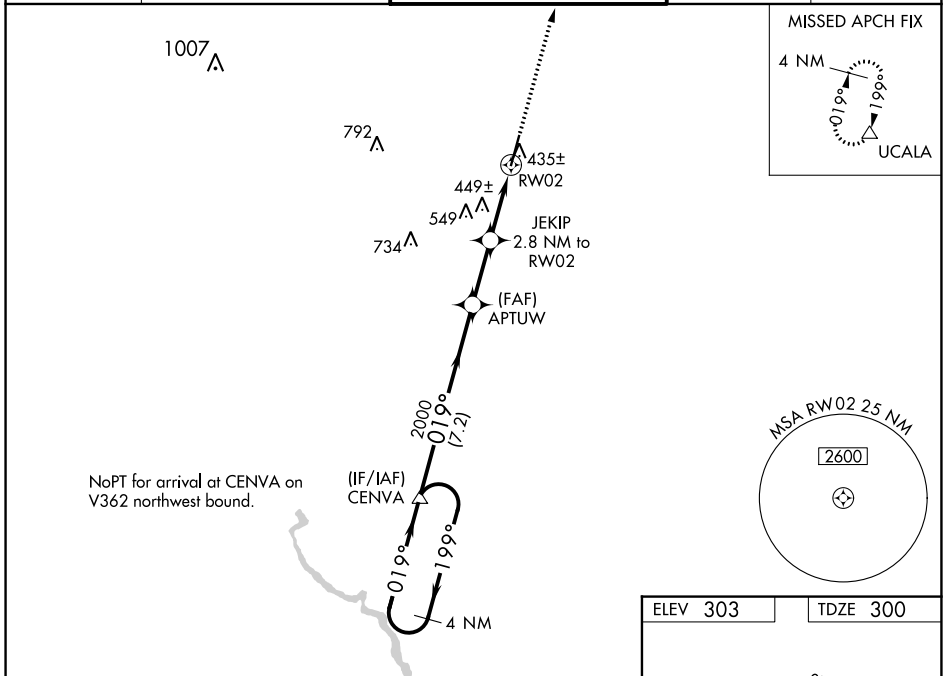
⚠ Baro-VNAV NA when using Dublin altimeter setting. For uncompensated Baro-VNAV systems, LNAV/VNAV NA below -15°C (5°F) or above 54°C (130°F). When local altimeter setting not received, use Dublin altimeter setting and increase all DA 52 feet and all MDA 60 feet; increase LNAV/VNAV all Cats, LNAV Cat C/D and Circling Cat C visibility ¼ miles. DME/DME RNP-0.3 NA. VDP NA with Dublin altimeter setting.

MALSR



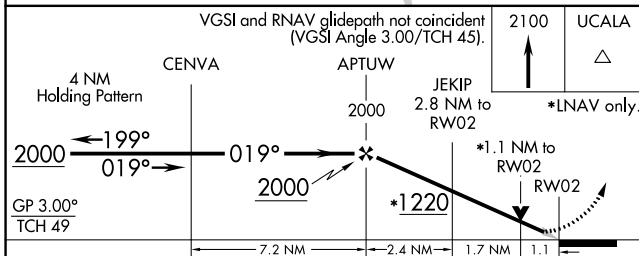
MISSED APPROACH:
Climb to 2100 direct UCALA and hold.

ATIS 119.425	JACKSONVILLE CENTER 127.575 269.025	HEART OF GEORGIA TOWER ★ 124.55 (CTAF) 0	GND CON 121.175	UNICOM 122.95
------------------------	---	--	---------------------------	-------------------------

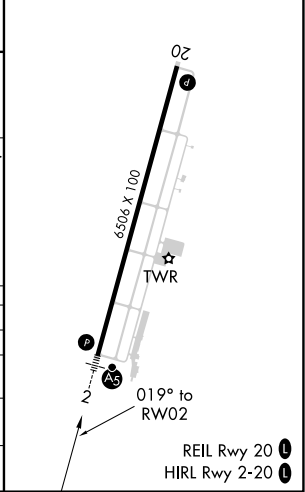


SE-4, 22 FEB 2024 to 21 MAR 2024

SE-4, 22 FEB 2024 to 21 MAR 2024



ELEV 303	TDZE 300
----------	----------



CATEGORY	A	B	C	D
LPV DA		500-½	200 (200-½)	
LNAV/VNAV DA		595-½	295 (300-½)	
LNAV MDA	700-½ 400 (400-½)		700-¾ 400 (400-¾)	
C CIRCLING	760-1 457 (500-1)	820-1 517 (600-1)	900-1½ 597 (600-1½)	900-2 597 (600-2)