

# FRWAY FIVE ARRIVAL (RNAV)

WEST PALM BEACH, FLORIDA

PALM BEACH APP CON  
128.3 317.4

AYBID TRANSITION (AYBID.FRWAY5):  
ORMOND BEACH TRANSITION (OMN.FRWAY5):  
TREASURE TRANSITION (TRV.FRWAY5):

...From FRWAY track 224° to TUNNE, then on track 224° to SANZZ, then on track 271° to CASKI, then on 271° heading. Expect RADAR vectors.

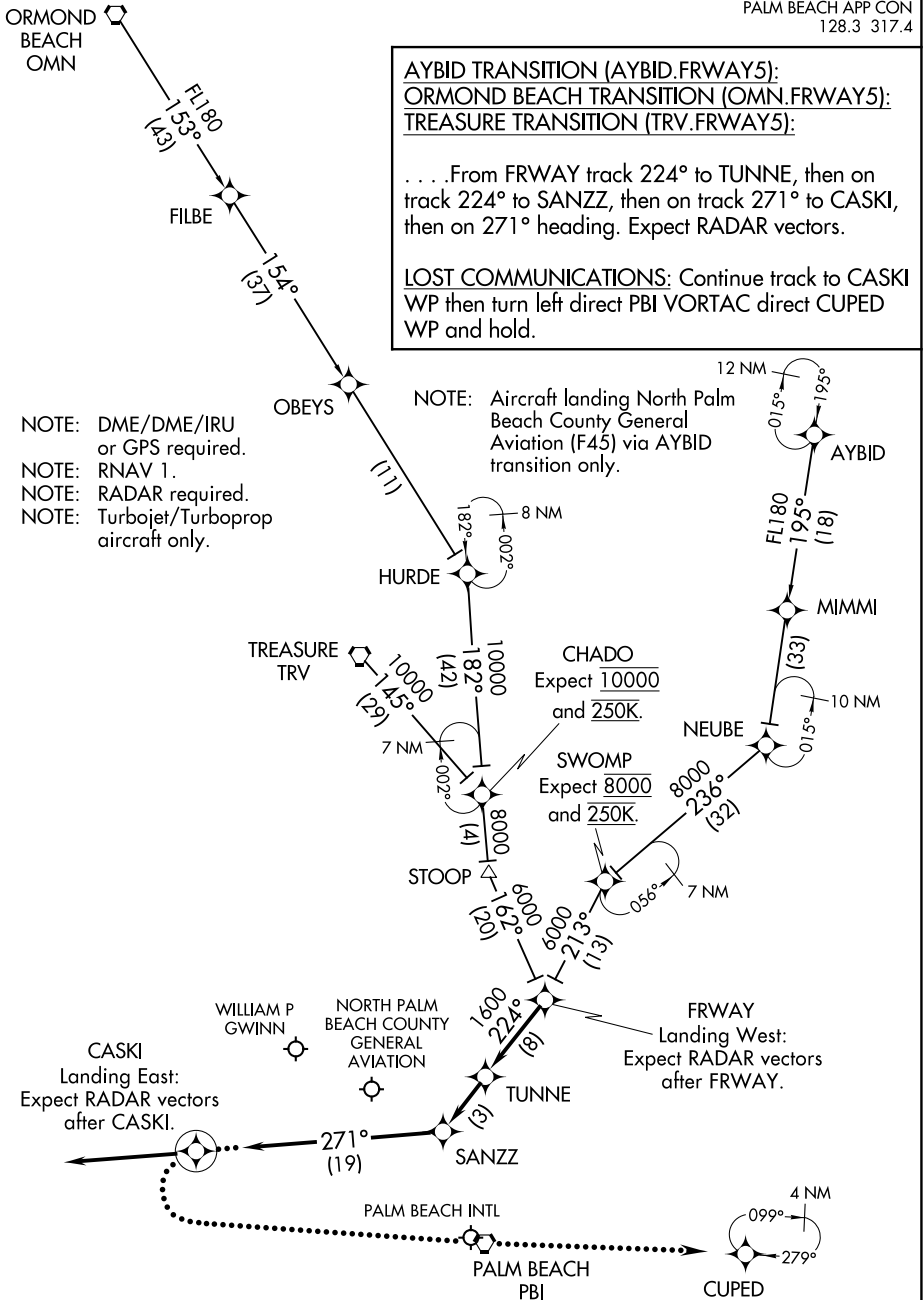
LOST COMMUNICATIONS: Continue track to CASKI WP then turn left direct PBI VORTAC direct CUPED WP and hold.

- NOTE: DME/DME/IRU or GPS required.
- NOTE: RNAV 1.
- NOTE: RADAR required.
- NOTE: Turbojet/Turboprop aircraft only.

NOTE: Aircraft landing North Palm Beach County General Aviation (F45) via AYBID transition only.

SE-3, 28 JAN 2021 to 25 FEB 2021

SE-3, 28 JAN 2021 to 25 FEB 2021



NOTE: Chart not to scale.

# FRWAY FIVE ARRIVAL (RNAV)

WEST PALM BEACH, FLORIDA

WLACE FOUR ARRIVAL (RNAV)  
(RSTAA, WLACE4) 13SEP18

PBI D-ATIS  
123.75  
PALM BEACH APP CON  
128.3 317.4

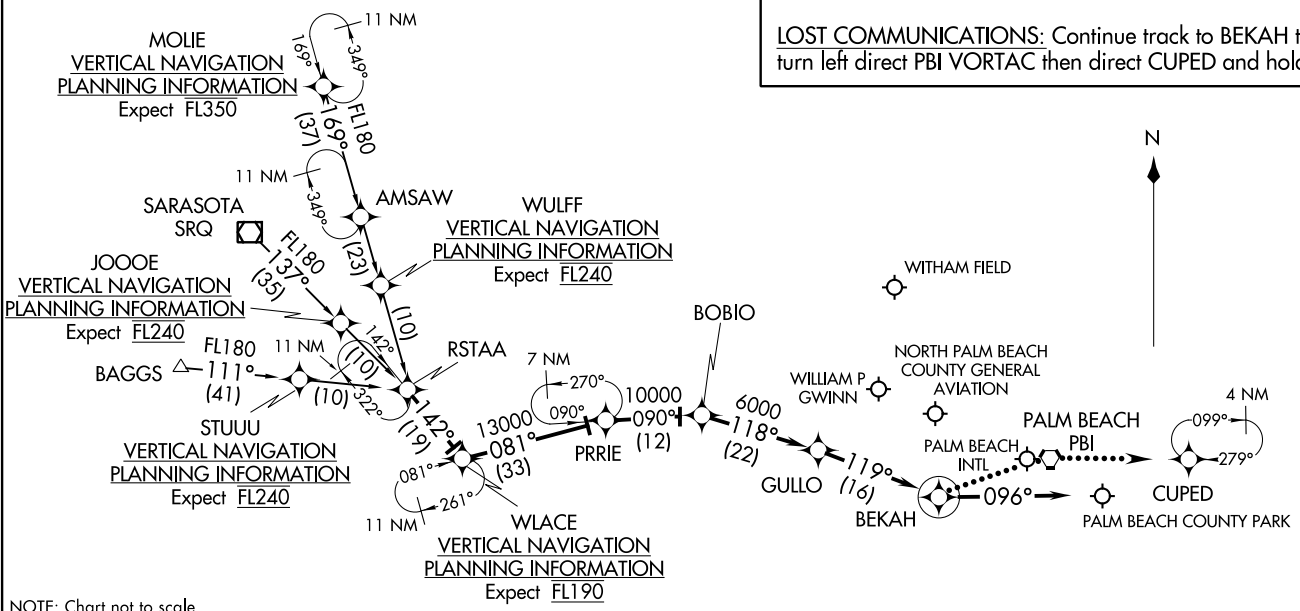
- NOTE: RADAR required.
- NOTE: RNAV 1.
- NOTE: DME/DME/IRU or GPS required.
- NOTE: Turbojet and Turboprop aircraft only.
- NOTE: For non-GPS equipped aircraft, DHP must be operational.
- NOTE: PBI landing east: expect to cross BOBIO at 10000 and 250K.
- NOTE: PBI landing west: expect to cross BOBIO at 10000.

### ARRIVAL ROUTE DESCRIPTION

- BAGGS TRANSITION (BAGGS.WLACE4)
- MOLIE TRANSITION (MOLIE.WLACE4)
- SARASOTA TRANSITION (SRQ.WLACE4)

From RSTAA on track 142° to WLACE, then on track 081° to PRRIE, then on track 090° to BOBIO, then on track 118° to GULLO, then on track 119° to BEKAH, then on heading 096° or as assigned by ATC. Expect RADAR vectors to final approach course.

LOST COMMUNICATIONS: Continue track to BEKAH then turn left direct PBI VORTAC then direct CUPED and hold.



NOTE: Chart not to scale.

(RSTAA, WLACE4) 20254  
WLACE FOUR ARRIVAL (RNAV)

AL-449 (FAA)

WEST PALM BEACH, FLORIDA