

WAAS CH <b>86728</b> <b>W18A</b>	APP CRS <b>178°</b>	Rwy Idg TDZE Apt Elev	<b>3204</b> <b>255</b> <b>256</b>
--	------------------------	-----------------------------	---

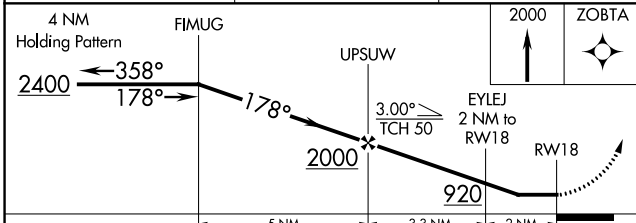
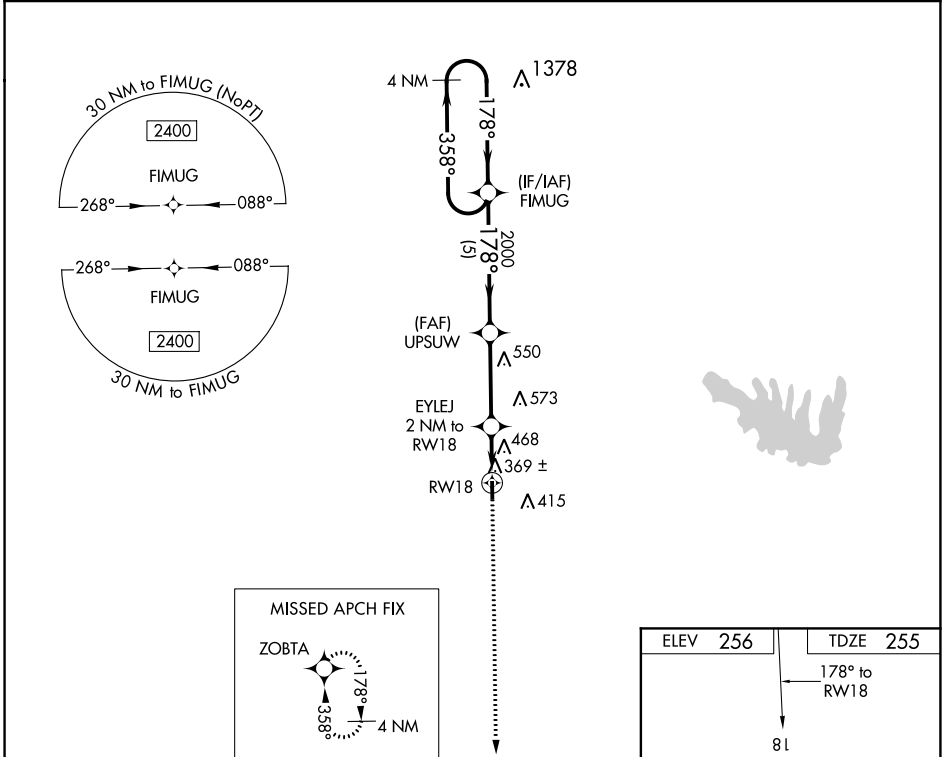
# RNAV (GPS) RWY 18

JONESBORO (F88)

**NA** Procedure NA at night. DME/DME RNP-0.3 NA. Visibility reduction by helicopters NA. Obtain local altimeter setting on CTAF; when not received, use Ruston altimeter setting and increase all MDAs 60 feet, and visibility Cat C ¼ SM.

**MISSED APPROACH:** Climb to 2000 direct ZOBTA and hold.

MONROE APP CON ★ <b>126.9 307.9</b>	(CTAF) <b>122.9</b>
--	------------------------



ELEV 256	TDZE 255
178° to RW18	
81	☆
3204 X 75	
36	
REIL Rwy 18 and 36	
MIRL Rwy 18-36	

CATEGORY	A	B	C	D
LP MDA	620-1	365 (400-1)		NA
LNAV MDA	720-1	465 (500-1)	720-1⅓ 465 (500-1⅓)	NA
CIRCLING	780-1	524 (600-1)	880-1¼ 624 (700-1¼)	NA

SC-4, 22 FEB 2024 to 21 MAR 2024

SC-4, 22 FEB 2024 to 21 MAR 2024