

FORT EUSTIS, VIRGINIA

COPTER RNAV (GPS) RWY 14

APCH CRS	Rwy Idg	3025
139°	TDZE	11
	Arprt Elev	11

[USA]

FELKER AAF (KFAF)

RNP APCH - GPS

ODALS



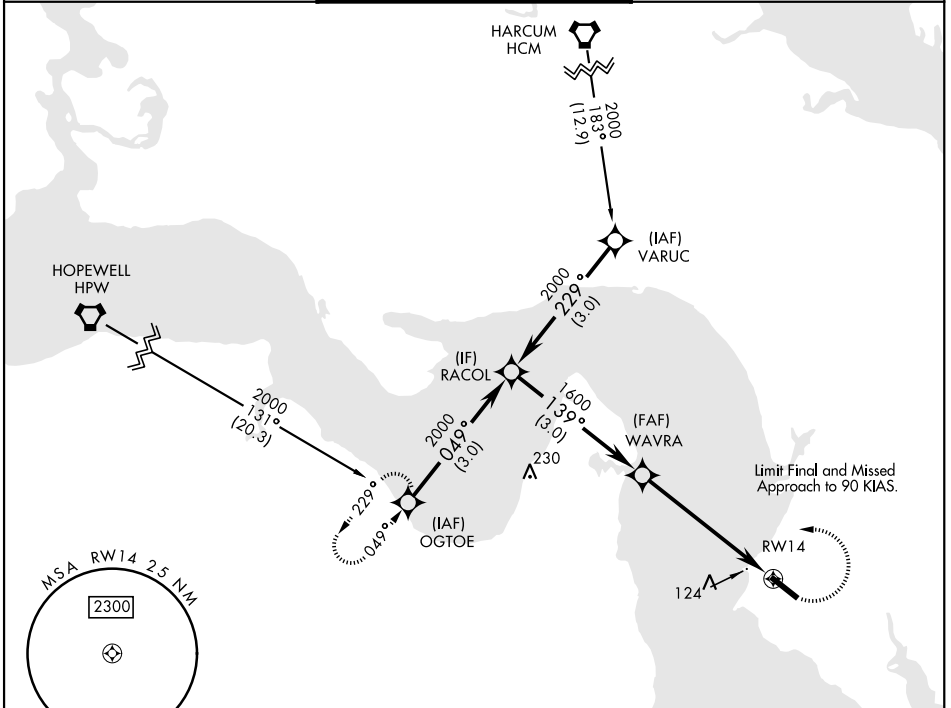
MISSED APPROACH: Climbing left turn to 2000 direct OGTOE and hold.

When local altimeter setting not received, use Newport News/Williamsburg Intl altimeter setting. VDP NA when using Newport News/Williamsburg Intl altimeter setting. Procedure NA at night.

NORFOLK APP CON
125.7 335.625

FELKER TOWER ★
126.3 (CTAF) 0 269.25

GND CON
121.35 229.4

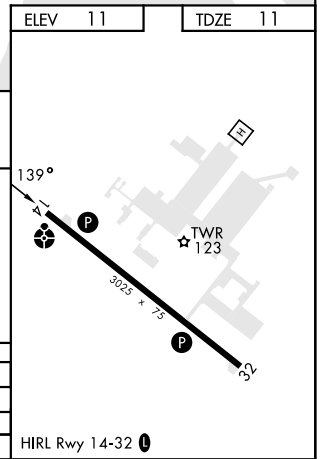
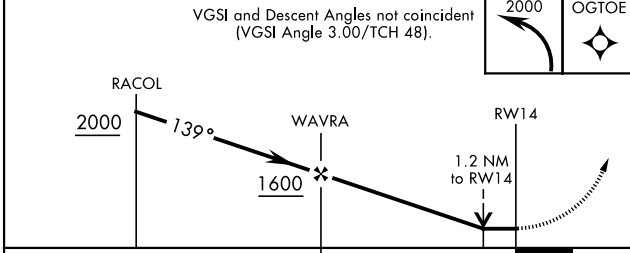


NE-3, 22 FEB 2024 to 21 MAR 2024

NE-3, 22 FEB 2024 to 21 MAR 2024

177

NOT FOR CIVIL USE



CATEGORY	COPTER		
LNAV MDA	420-¾	409	(500-¾)
NEWPORT NEWS/WILLIAMSBURG INTL ALTIMETER			
LNAV MDA	440-¾	429	(500-¾)

FORT EUSTIS, VIRGINIA

37°08'N-76°37'W

FELKER AAF (KFAF)

Amdt 1 30NOV23

COPTER RNAV (GPS) RWY 14