

WAAS CH 72624 W05A	APP CRS 051°	Rwy Idg 5548 TDZE 15 Apt Elev 17
---------------------------------	------------------------	---

RNAV (GPS) RWY 5

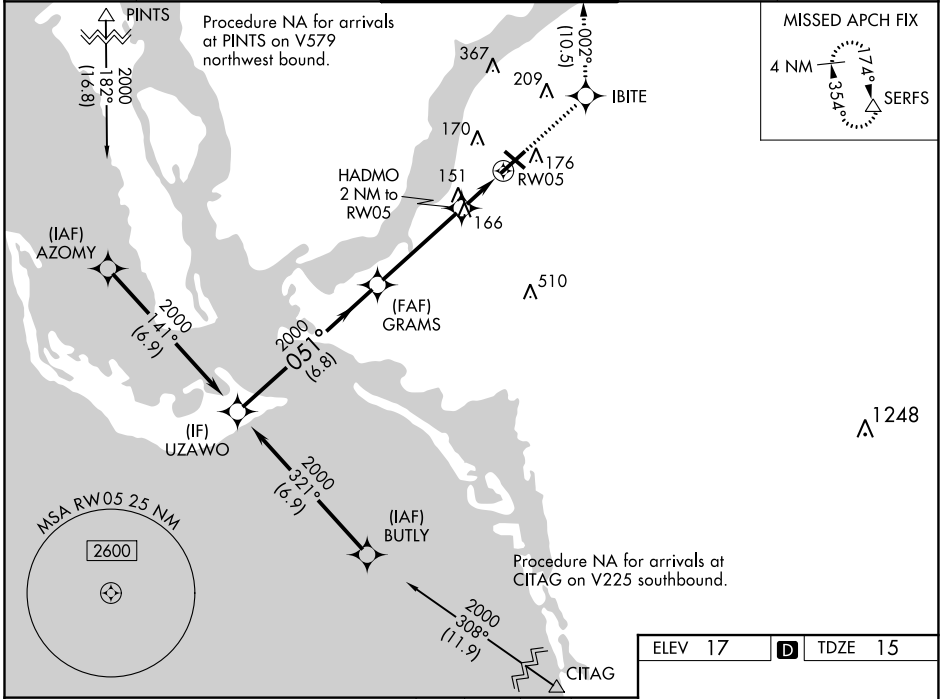
PAGE FLD (FMY)

RNP APCH.

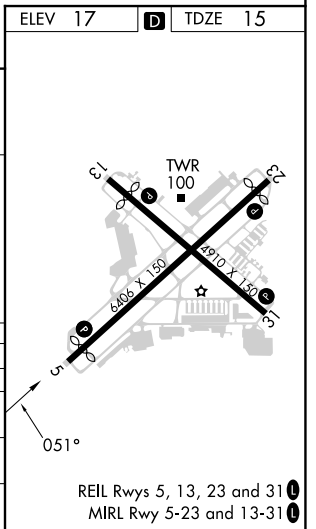
▼ When Circling to Rwy 31 at night, operational VGSI required, remain on or above VGSI glidepath until threshold. Rwy 5 helicopter visibility reduction below 3/4 SM NA. For uncompensated Baro-VNAV systems, LNAV/VNAV NA below 4°C or above 54°C.

MISSED APPROACH: Climb to 2600 direct IBITE and on track 002° to SERFS and hold.

ATIS 123.725	FORT MYERS APP CON ★ 125.15 306.2 (Rwys 5, 13) 126.8 306.2 (Rwys 23, 31)	PAGE TOWER ★ 119.0 (CTAF) 306.95	GND CON 121.7	CLNC DEL 121.7
------------------------	--	---	-------------------------	--------------------------



	ELEV 17	TDZE 15		
	IBITE	SERFS		
	↑ 2600	tr 002°		
	UZAWO	GRAMS		
	2000	2000		
	GP 3.00° TCH 53	HADMO 2 NM to RW05		
	2000	*1.1 NM to RW05		
	6.8 NM	4.1 NM		
		0.9 NM		
		1.1 NM		
		*700		
		*LNAV only.		
CATEGORY	A	B	C	D
LPV DA		265-3/4	250 (300-3/4)	
LNAV/VNAV DA		317-7/8	302 (300-7/8)	
LNAV MDA	420-1	405 (500-1)	420-1 1/8	405 (500-1 1/8)
CIRCLING	540-1	523 (600-1)	600-1 1/2	680-2
			583 (600-1 1/2)	663 (700-2)



SE-3, 22 FEB 2024 to 21 MAR 2024

SE-3, 22 FEB 2024 to 21 MAR 2024