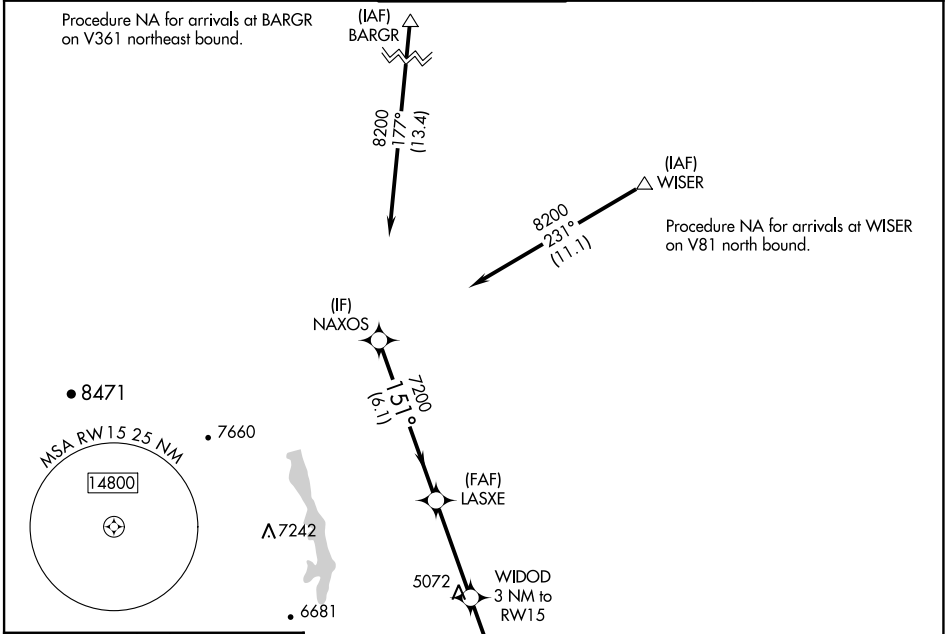


APP CRS	Rwy Idg	<b>8500</b>
<b>151°</b>	TDZE	<b>4990</b>
	Apt Elev	<b>5020</b>

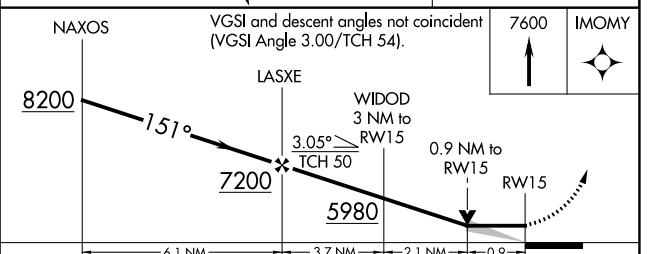
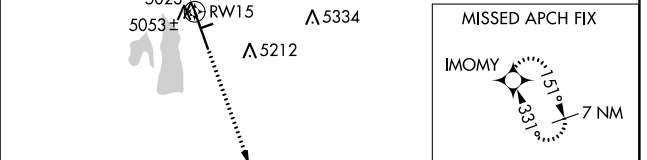
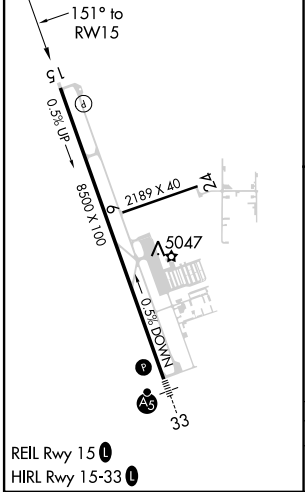
# RNAV (GPS) RWY 15

NORTHERN COLORADO RGNL (FNL)

RNP APCH-GPS.		MISSED APPROACH: Climb to 7600 direct IMOMY and hold.		
ATIS	DENVER APP CON	NOCO TOWER*	GND CON	CLNC DEL
<b>135.075</b>	<b>134.85 251.125</b>	<b>118.4 (CTAF) 0</b>	<b>121.65</b>	<b>120.25</b> (When twr closed)



ELEV 5020	<b>D</b>	TDZE 4990
-----------	----------	-----------



CATEGORY	A	B	C	D
LNAV MDA	5320-1 330 (400-1)			

SW-1, 22 FEB 2024 to 21 MAR 2024

SW-1, 22 FEB 2024 to 21 MAR 2024