

WAAS CH <b>72939</b> <b>W04A</b>	APP CRS <b>040°</b>	Rwy Idg TDZE <b>447</b> Apt Elev <b>447</b>	<b>5000</b>
--	------------------------	---	-------------

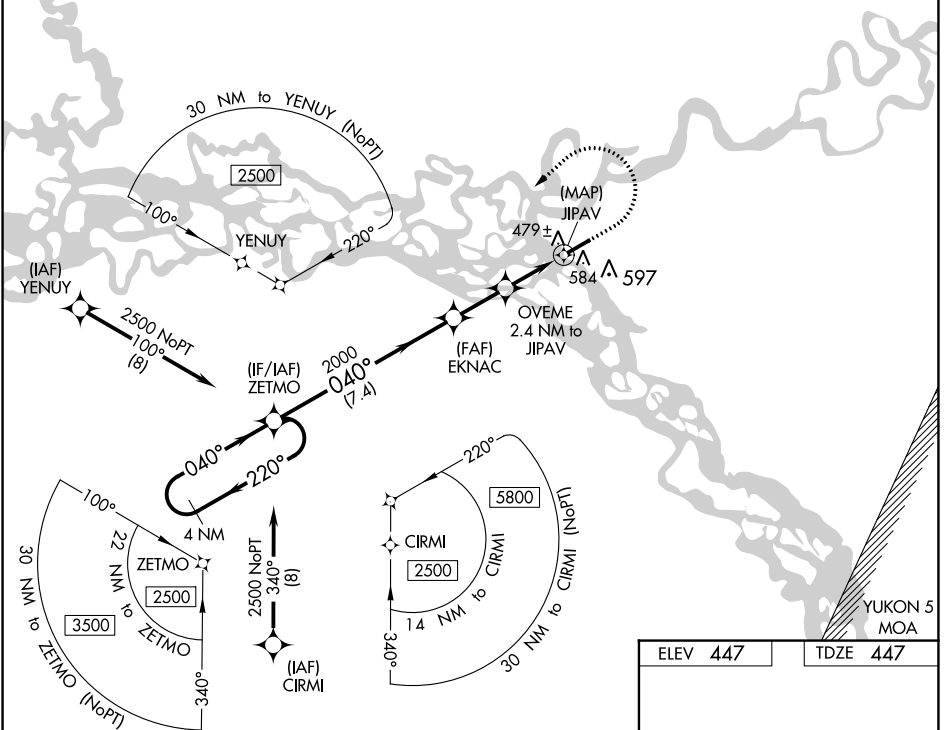
# RNAV (GPS) RWY 4

FORT YUKON (FYU) (PFYU)

**⚠** For uncompensated Baro-VNAV systems, LNAV/VNAV NA below -20° C (-4°F) or above 54°C (130°F). Circling NA southeast of Rwy 4-22. DME/DME RNP-0.3 NA. Rwy 4 helicopter visibility reduction below  $\frac{3}{4}$  SM NA.

**MISSED APPROACH:** Climb to 1000 then climbing left turn to 2500 direct ZETMO and hold.

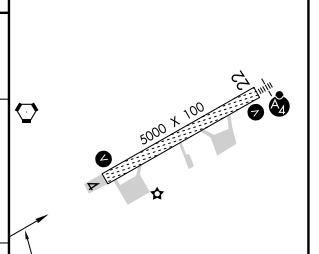
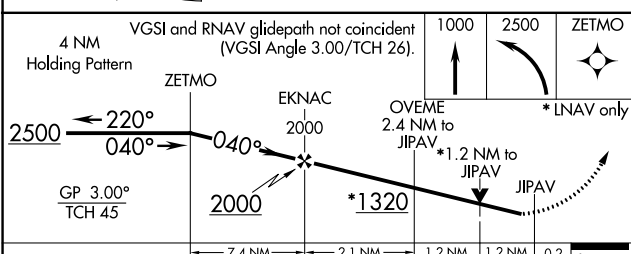
AWOS-3P <b>125.8</b>	ANCHORAGE CENTER <b>135.0 225.4</b>	FAIRBANKS RADIO <b>122.05</b>	CTAF <b>122.5</b> <b>①</b>
-------------------------	--	----------------------------------	-------------------------------



AK, 25 JAN 2024 to 21 MAR 2024

AK, 25 JAN 2024 to 21 MAR 2024

ELEV <b>447</b>	TDZE <b>447</b>
-----------------	-----------------



CATEGORY	A	B	C	D
LPV DA		697-1	250 (300-1)	
LNAV/VNAV DA		764-1	317 (400-1)	
LNAV MDA	860-1	413 (500-1)	860-1 $\frac{1}{8}$	413 (500-1 $\frac{1}{8}$ )
<b>ⓐ</b> CIRCLING	860-1 413 (500-1)	900-1 453 (500-1)	900-1 $\frac{1}{2}$ 453 (500-1 $\frac{1}{2}$ )	1000-2 553 (600-2)

040° to JIPAV

MIRL Rwy 4-22 **①**