

WAAS CH 72820 W15A	APP CRS 150°	Rwy ldg TDZE Apt Elev	5196 462 475
--	------------------------	-----------------------------	---

RNAV (GPS) RWY 15

OSWEGO COUNTY (FZY)

RNP APCH.

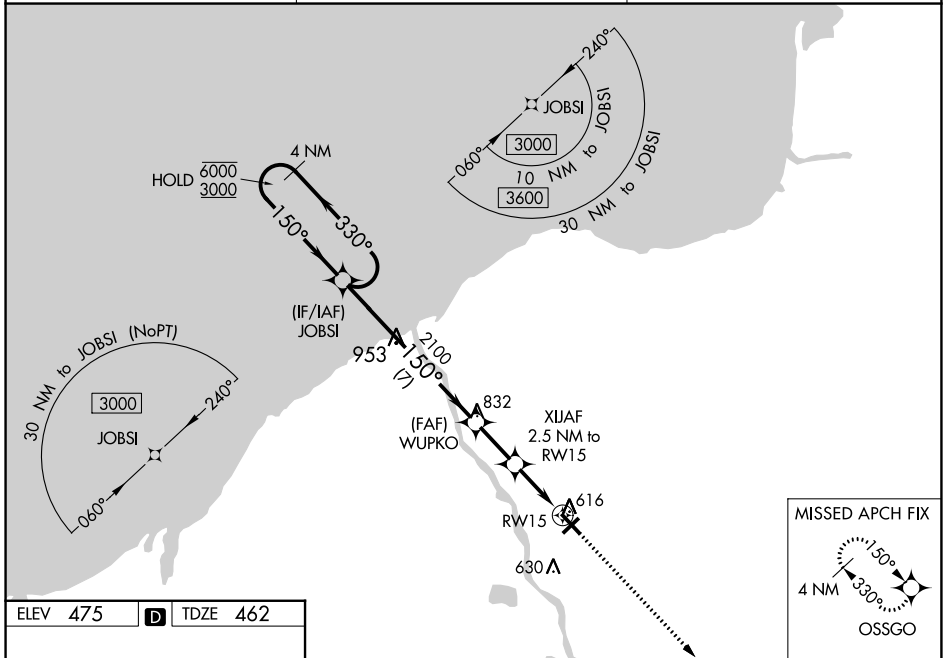
▽ Rwy 15 helicopter visibility reduction below ¾ SM NA.
▲ For uncompensated Baro-VNAV systems, LNAV/VNAV NA below -24°C or above 54°C.

MISSED APPROACH:
Climb to 3000 direct OSSGO and hold.

ASOS
119.275

SYRACUSE APP CON
126.125 269.125

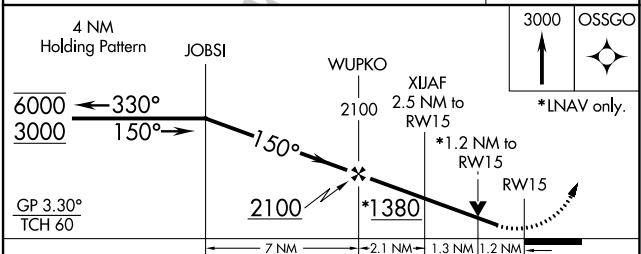
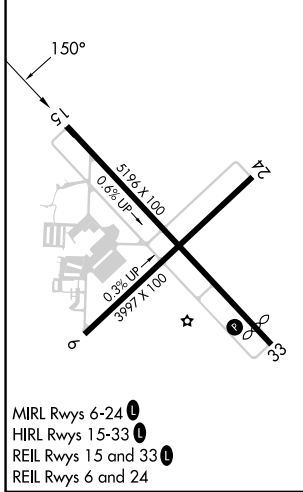
UNICOM
123.0 (CTAF) 0



NE-2, 22 FEB 2024 to 21 MAR 2024

NE-2, 22 FEB 2024 to 21 MAR 2024

ELEV 475	D	TDZE 462
-----------------	----------	-----------------



CATEGORY	A	B	C	D
LPV DA	783-1 321 (400-1)			NA
LNAV/VNAV DA	887-1¼ 425 (500-1¼)			NA
LNAV MDA	920-1	458 (500-1)	920-1⅜ 458 (500-1⅜)	NA
CIRCLING	920-1 445 (500-1)	940-1 465 (500-1)	960-1½ 485 (500-1½)	NA