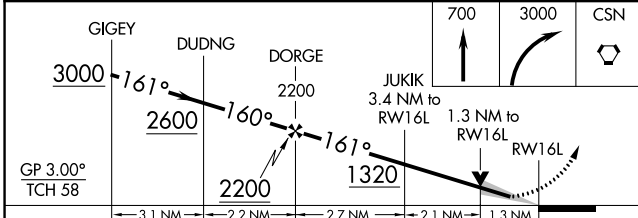
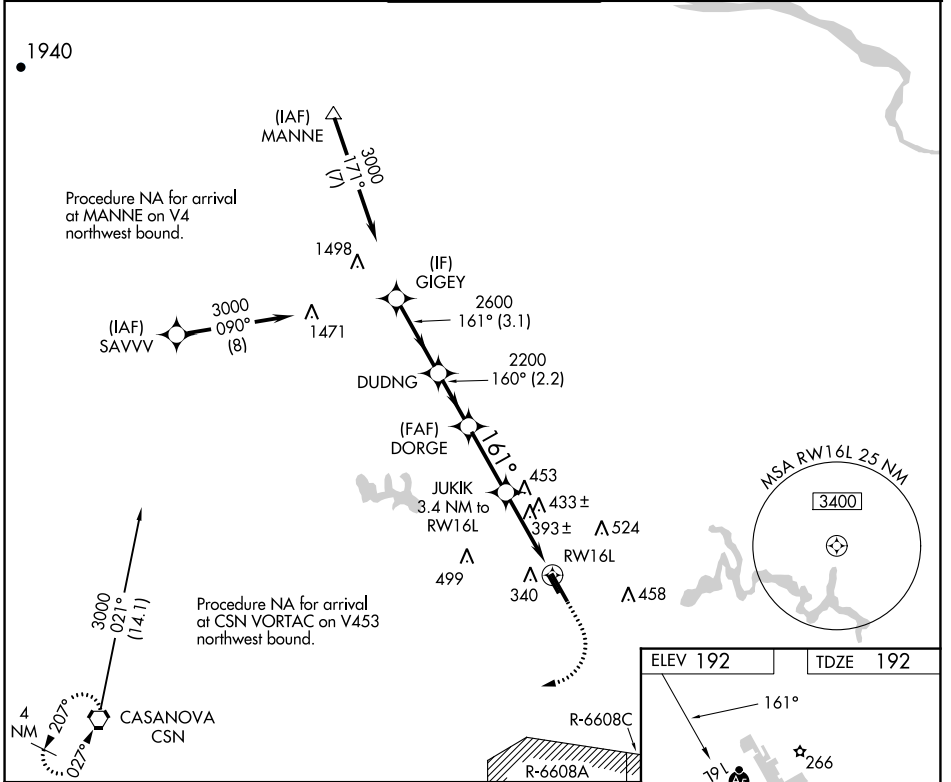


WAAS CH 70302 W16A	APP CRS 161°	Rwy ldg TDZE 192 Apt Elev 192
--	------------------------	---

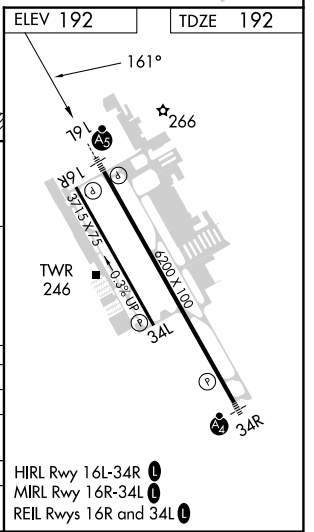
RNAV (GPS) RWY 16L

MANASSAS RGNL/HARRY P DAVIS FLD (HEF)

RNP APCH - GPS.		MALSRL	MISSED APPROACH: Climb to 700 then climbing right turn to 3000 direct CSN VORTAC and hold.	
<p>▼ For uncompensated Baro-VNAV systems, LNAV/VNAV NA below -15°C or above 54°C. For inop ALS, increase LNAV Cat C/D visibility to 1½ SM.</p>				
ATIS 125.175	POTOMAC APP CON 128.525 306.925	MANASSAS TOWER ★ 133.1 (CTAF) 0 360.75	GND CON 121.8	CLNC DEL 120.2



CATEGORY	A		B		C		D
LPV DA	442-½		250 (300-½)				
LNAV/VNAV DA	635-7/8		443 (500-7/8)				
LNAV MDA	660-½		468 (500-½)		660-1		468 (500-1)
CIRCLING	720-1		740-1		840-1¾		880-2¼
	528 (600-1)		548 (600-1)		648 (700-1¾)		688 (700-2¼)



NE-3, 22 FEB 2024 to 21 MAR 2024

NE-3, 22 FEB 2024 to 21 MAR 2024