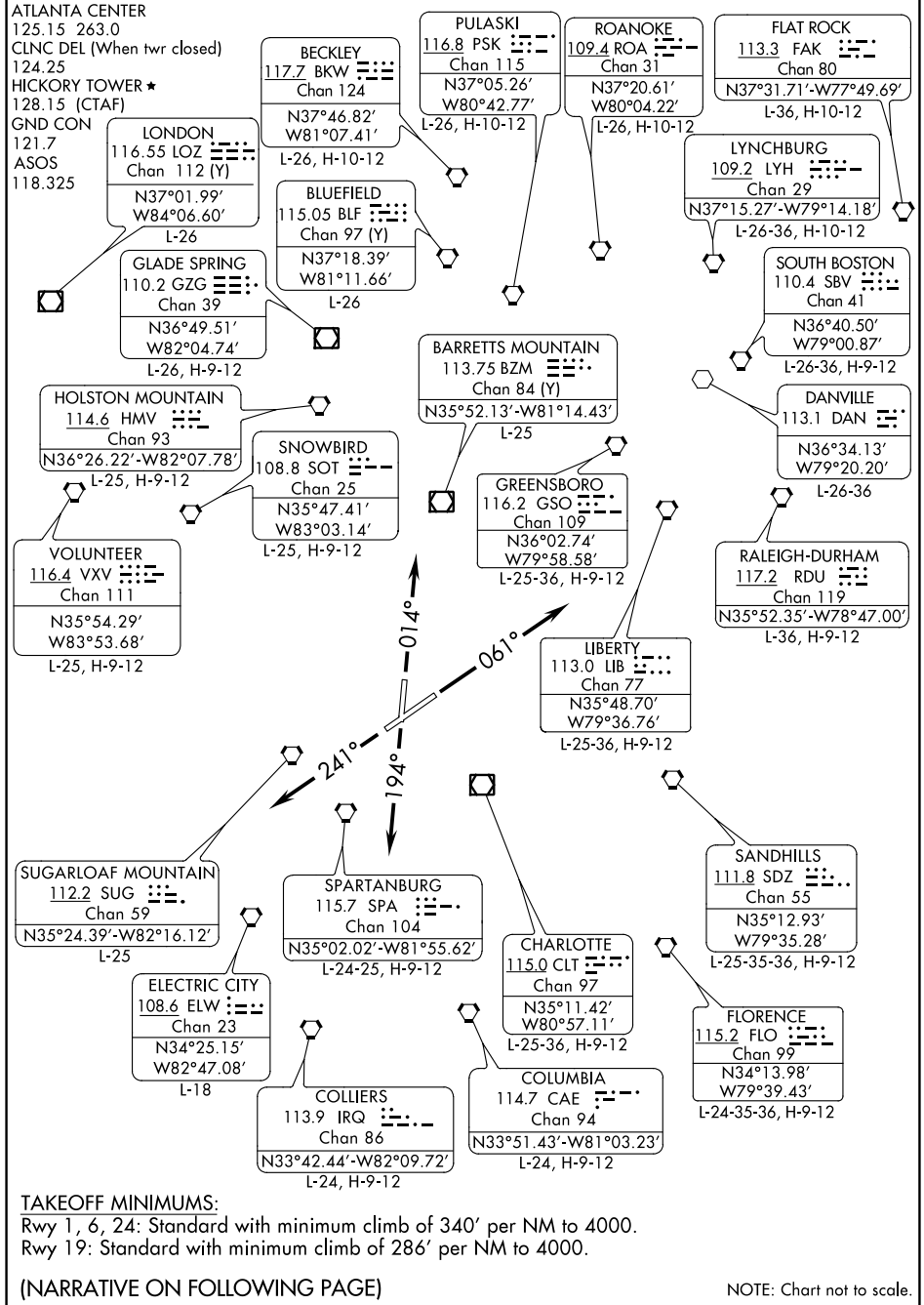


(HKY3.HKY) 22307

AL-706 (FAA)

HICKORY RGNL (HKY)  
HICKORY, NORTH CAROLINA

# HICKORY THREE DEPARTURE (OBSTACLE)



SE-2, 22 FEB 2024 to 21 MAR 2024

SE-2, 22 FEB 2024 to 21 MAR 2024

# HICKORY THREE DEPARTURE (OBSTACLE)

HICKORY, NORTH CAROLINA  
HICKORY RGNL (HKY)

(HKY3.HKY) 09FEB12

# HICKORY THREE DEPARTURE (OBSTACLE)



## DEPARTURE ROUTE DESCRIPTION

TAKEOFF RUNWAY 1: Climb heading 014°, or heading assigned by ATC, Thence . . . .

TAKEOFF RUNWAY 6: Climb heading 061°, or heading assigned by ATC, Thence . . . .

TAKEOFF RUNWAY 19: Climb heading 194°, or heading assigned by ATC, Thence . . . .

TAKEOFF RUNWAY 24: Climb heading 241°, or heading assigned by ATC, Thence . . . .

. . . . expect radar vectors to join filed route. Maintain 4000 or assigned altitude.

Expect filed altitude/flight level ten minutes after departure.

### TAKEOFF OBSTACLE NOTES:

Rwy 1: Trees beginning 51' from DER, 382' right of centerline, up to 100' AGL/1259' MSL.

Trees beginning 60' from DER, 212' left of centerline, up to 100' AGL/1279' MSL.

Rwy 6: Pole 151' from DER, 427' left of centerline, up to 6' AGL/1191' MSL.

Trees beginning 1269' from DER, 781' right of centerline, up to 100' AGL/1259' MSL.

Rwy 19: Light 178' from DER, 247' left of centerline, up to 10' AGL/1154' MSL.

Light 494' from DER, 95' right of centerline, up to 10' AGL/1161' MSL.

Trees beginning 755' from DER, 65' left of centerline, up to 100' AGL/1191' MSL.

Trees beginning 1001' from DER, 174' right of centerline, up to 100' AGL/1206' MSL.

Rwy 24: Trees beginning 17' from DER, 441' left of centerline, up to 100' AGL/1232' MSL.

Trees beginning 154' from DER, 413' right of centerline, up to 100' AGL/1237' MSL.

OL on pole 2681' from DER, 317' left of centerline, up to 50' AGL/1222' MSL.

SE-2, 22 FEB 2024 to 21 MAR 2024

SE-2, 22 FEB 2024 to 21 MAR 2024