



LOC I-HWV 108.95	APP CRS 059°	Rwy Idg TDZE Apt Elev	4201 76 81
----------------------------	------------------------	-----------------------------	---------------------------------------

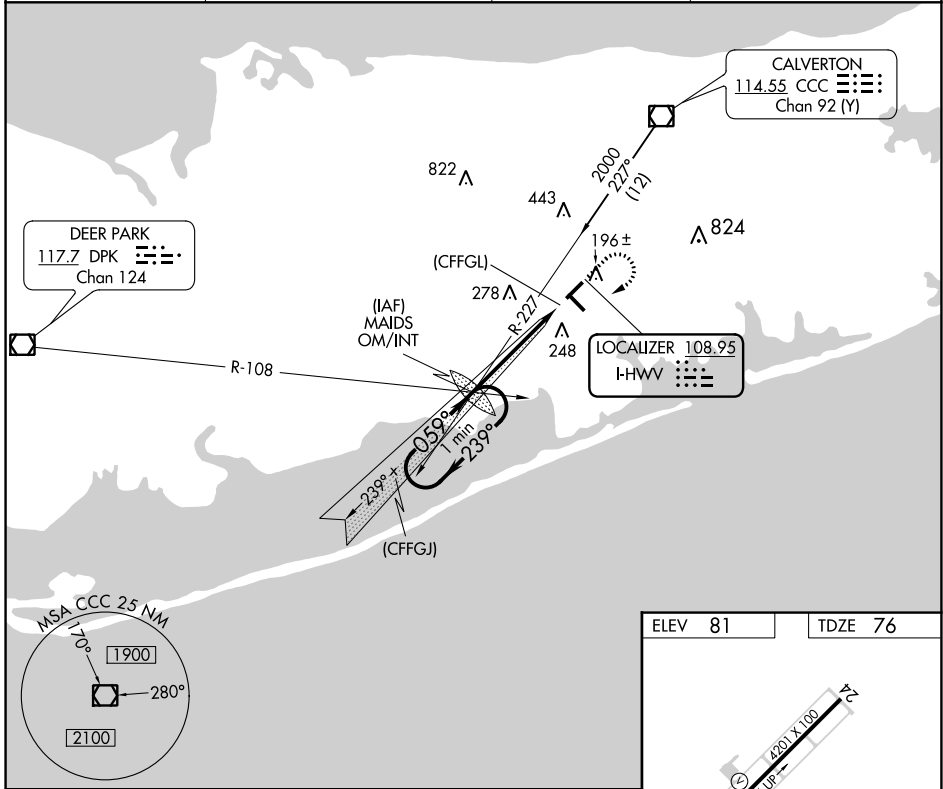
ILS or LOC RWY 6

BROOKHAVEN (HWV)

NA Helicopter visibility reduction below $\frac{3}{4}$ SM NA. When local altimeter setting not received, use Long Island Mac Arthur altimeter setting and increase all DA 28 feet and all MDA 40 feet. For inoperative MALSR, increase S-ILS 6 all Cats visibility to $\frac{7}{8}$, and S-LOC 6 all Cats visibility to 1 mile. ILS localizer unusable 0.4 NM to threshold.

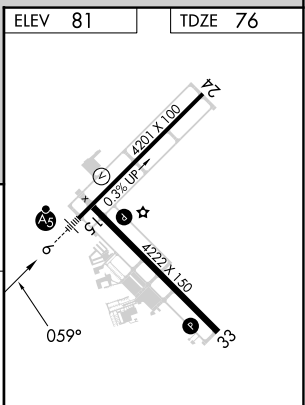
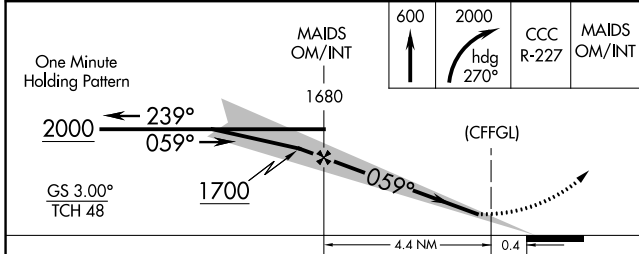
MALSR  MISSED APPROACH: Climb to 600 then climbing right turn to 2000 on heading 270° and CCC VOR/DME R-227 to MAIDS OM/INT and hold, continue climb-in-hold to 2000.


ASOS 119.625	NEW YORK APP CON 120.05 343.75	CLNC DEL 133.2	UNICOM 122.8 (CTAF) 
------------------------	--	--------------------------	---



NE-2, 22 FEB 2024 to 21 MAR 2024

NE-2, 22 FEB 2024 to 21 MAR 2024



CATEGORY	A	B	C	D	FAF to MAP 4.4 NM					
S-ILS 6	337- $\frac{3}{4}$	261 (300- $\frac{3}{4}$)	NA	NA	Knots	60	90	120	150	180
S-LOC 6	520- $\frac{3}{4}$	444 (500- $\frac{3}{4}$)	NA	NA	Min:Sec	4:24	2:56	2:12	1:46	1:28
 CIRCLING	560-1	479 (500-1)	NA	NA						