

WAAS CH <b>99419</b> W01A	APP CRS <b>014°</b>	Rwy Idg TDZE <b>495</b> Apt Elev <b>497</b>
---------------------------------	------------------------	---

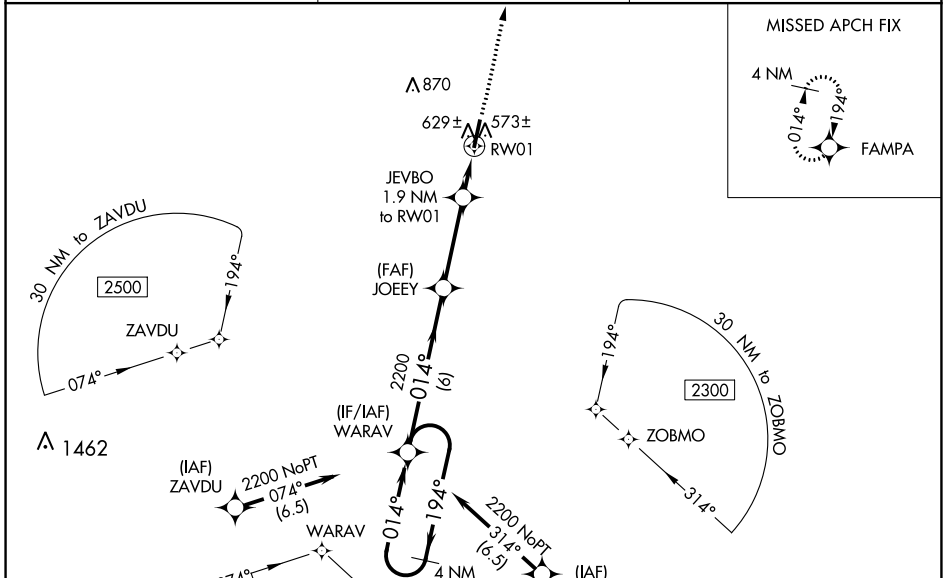
# RNAV (GPS) RWY 1

CARROLL COUNTY (HZD)

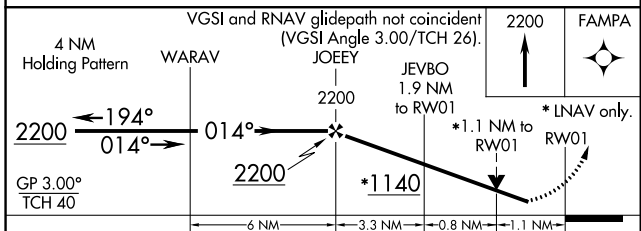
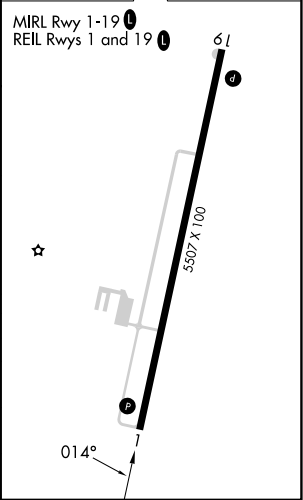
**⚠** For uncompensated Baro-VNAV systems, LNAV/VNAV NA below -15°C (5°F) or above 54°C (130°F). DME/DME RNP-0.3 NA. When local altimeter setting not received, use Mc Kellar-Sipes Rgnl altimeter setting and increase all DA 94 feet and all MDA 100 feet; increase LPV all Cats visibility ¼ mile, LNAV/VNAV all Cats visibility ⅓ mile, LNAV Cats C and D visibility ½ mile, and Circling Cats C and D visibility ½ mile. VDP and Baro-VNAV NA with Mc Kellar-Sipes Rgnl altimeter setting. Helicopter visibility reduction below ¼ SM NA.

**MISSED APPROACH:** Climb to 2200 direct FAMP A and hold.

AWOS-3 <b>133.275</b>	MEMPHIS CENTER <b>134.65 316.15</b>	UNICOM <b>122.8 (CTAF)</b>
--------------------------	--	-------------------------------



ELEV 497	TDZE 495
----------	----------



CATEGORY	A	B	C	D
LPV DA		745-7/8	250 (300-7/8)	
LNAV/VNAV DA		810-1	315 (400-1)	
LNAV MDA	880-1	385 (400-1)	880-1 1/8	385 (400-1 1/8)
<b>C</b> CIRCLING	980-1	483 (500-1)	1220-2 723 (800-2)	1220-2 1/4 723 (800-2 1/4)

SE-1, 22 FEB 2024 to 21 MAR 2024

SE-1, 22 FEB 2024 to 21 MAR 2024