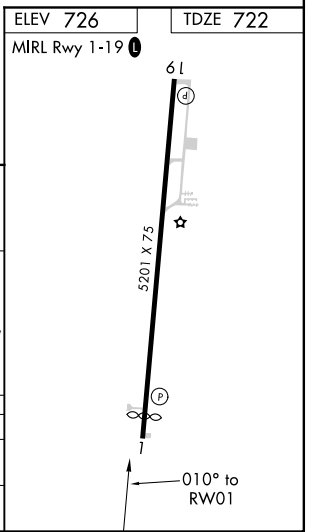
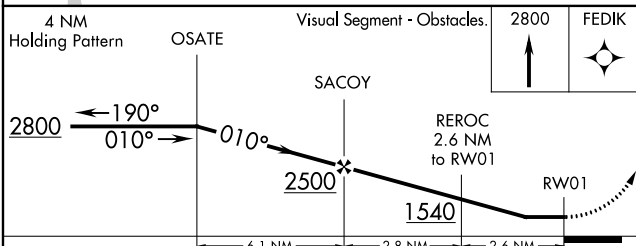
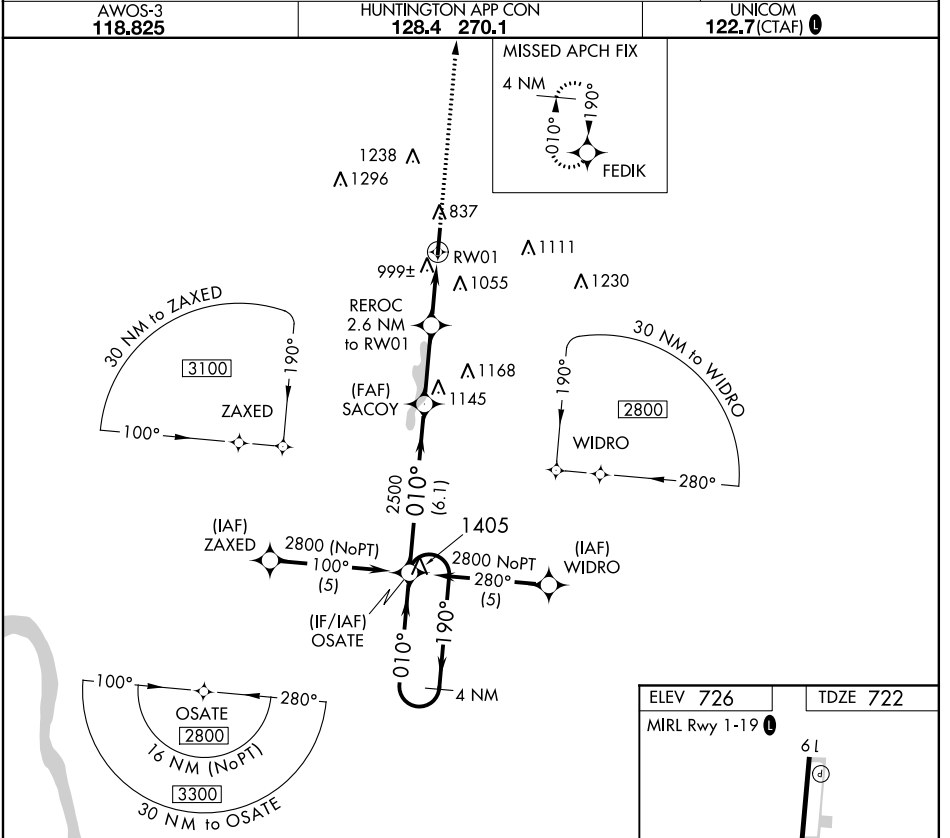


APP CRS	Rwy Idg	4870
010°	TDZE	722
	Apt Elev	726

RNAV (GPS) RWY 1

JAMES A RHODES (I43)

RNP APCH.	<p>When local altimeter setting not received, use Greater Portsmouth altimeter setting and increase all MDA 60 feet, and increase LNAV Cat C/D and Circling Cat B visibility ¼ SM. Rwy 1 helicopter visibility reduction below 1 SM NA. Straight-in Rwy 1 NA at night, Circling Rwy 1 NA at night.</p>	<p>MISSED APPROACH: Climb to 2800 direct FEDIK WP and hold.</p>
AWOS-3 118.825	HUNTINGTON APP CON 128.4 270.1	UNICOM 122.7 (CTAF) 0



CATEGORY	A	B	C	D
LNAV MDA	1300-1	578 (600-1)	1300-1½ 578 (600-1½)	1300-1¾ 578 (600-1¾)
CIRCLING	1340-1 614 (700-1)	1480-1 754 (800-1)	1680-3	954 (1000-3)

EC-2, 02 DEC 2021 to 30 DEC 2021

EC-2, 02 DEC 2021 to 30 DEC 2021

RNAV (GPS) RWY 19

JAMES A RHODES (I43)

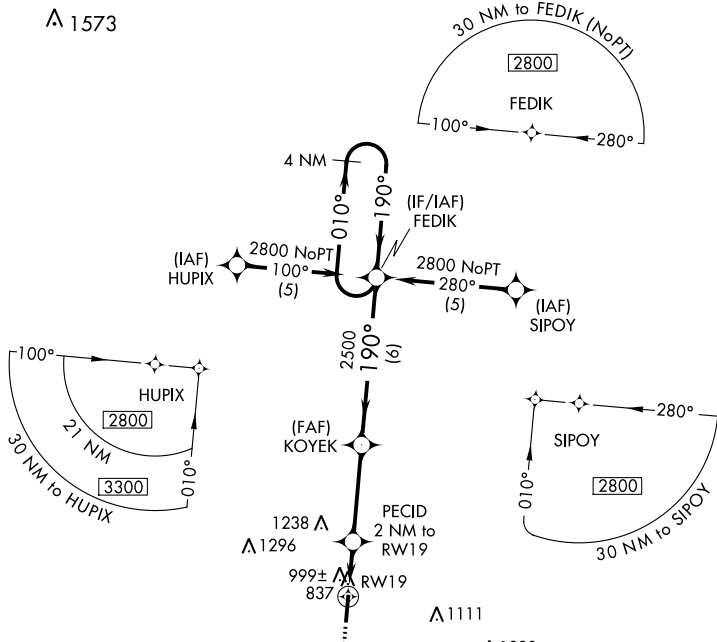
APP CRS 190°	Rwy Idg TDZE Apt Elev	5201 726 726
------------------------	-----------------------------	---

RNP APCH.

▼ When local altimeter setting not received, use Greater Portsmouth altimeter setting and increase all MDA 60 feet, and increase LNAV Cat C/D and Circling Cat B visibility ¼ SM.
▲ NA Rwy 19 helicopter visibility reduction below ¾ SM NA. Circling Rwy 1 NA at night.

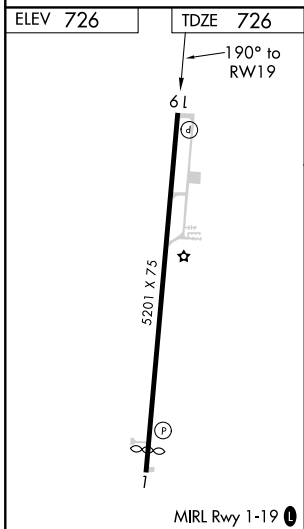
MISSED APPROACH:
Climb to 2800 direct OSATE WP and hold.

AWOS-3 118.825	HUNTINGTON APP CON 128.4 270.1	UNICOM 122.7 (CTAF) 0
--------------------------	--	---------------------------------



EC-2, 02 DEC 2021 to 30 DEC 2021

EC-2, 02 DEC 2021 to 30 DEC 2021



ELEV 726	TDZE 726	MISSED APCH FIX OSATE	
2800	OSATE	VGSJ and descent angles not coincident (VGSJ Angle 4.00/TCH 45).	
RWY 19		PECID 2 NM to RWY 19	FEDIK 4 NM Holding Pattern
TCH 40		1460	2500
2 NM		3.5	6 NM
CATEGORY	A	B	C
LNAV MDA	1280-1	554 (600-1)	1280-1½ 554 (600-1½)
CIRCLING	1340-1 614 (700-1)	1480-1 754 (800-1)	1680-3 954 (1000-3)