

RADAR and DME required.

TOP ALTITUDE:
16000

TAKEOFF MINIMUMS

Rwys 8L/R, 9, 27, 15L/R, 26L/R, 33L/R: Standard.



PALACIOS THREE DEPARTURE (PSX3.PSX) 03NOV22
 PALACIOS THREE DEPARTURE (PSX3.PSX) 03NOV22
 GEORGE BUSH INTCNL/HOUSTON (IAH)
 HOUSTON, TEXAS

D-ATIS
 124.05
 CLNC DEL
 128.1
 CPDLC
 GND CON
 118.575 (Rwys 8L/R, 26L/R, 9/27)
 121.7 (Rwys 15L/R, 33L/R)
 HOUSTON TOWER
 120.725 290.2 (Rwys 8L/26R)
 125.35 290.2 (Rwys 8R/26L)
 127.3 288.25 (Rwys 15L/R, 33L/R)
 135.15 290.2 (Rwys 9/27)
 HOUSTON DEP CON
 127.125 269.075

FORT STOCKTON
 116.9 FST
 Chan 116
 N30°57.13'
 W102°58.54'
 L-19, H-6

SAN ANTONIO
 116.8 SAT
 Chan 115
 N29°38.64'-W98°27.68'
 L-19, H-7

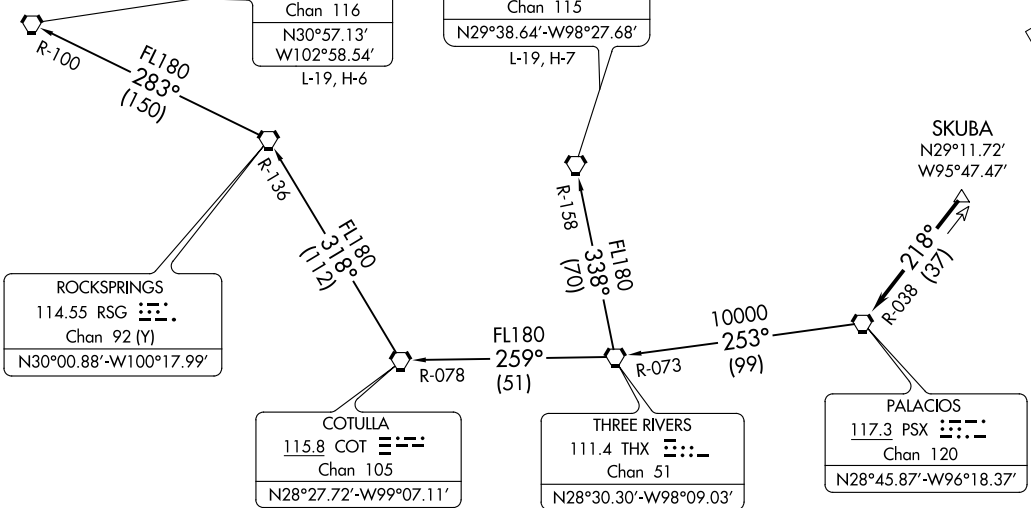
SKUBA
 N29°11.72'
 W95°47.47'

ROCKSPRINGS
 114.55 RSG
 Chan 92 (Y)
 N30°00.88'-W100°17.99'

COTULLA
 115.8 COT
 Chan 105
 N28°27.72'-W99°07.11'

THREE RIVERS
 111.4 THX
 Chan 51
 N28°30.30'-W98°09.03'

PALACIOS
 117.3 PSX
 Chan 120
 N28°45.87'-W96°18.37'



NOTE: Chart not to scale.

(NARRATIVE ON FOLLOWING PAGE)

PALACIOS THREE DEPARTURE (PSX3.PSX) 22307
 PALACIOS THREE DEPARTURE (PSX3.PSX) 22307
 GEORGE BUSH INTCNL/HOUSTON (IAH)
 HOUSTON, TEXAS

PALACIOS THREE DEPARTURE



DEPARTURE ROUTE DESCRIPTION

TAKEOFF ALL RUNWAYS: Climb on assigned heading for RADAR vectors to SKUBA, maintain 16000.

Expect filed altitude 10 minutes after departure, thence

. . . . on PSX R-038 to PSX VORTAC.

FORT STOCKTON TRANSITION (PSX3.FST): From over PSX VORTAC on PSX R-253 and THX R-073 to THX VORTAC, then on THX R-259 and COT R-078 to COT VORTAC, then on COT R-318 and RSG R-136 to RSG VORTAC, then on RSG R-283 and FST R-100 to FST VORTAC.

SAN ANTONIO TRANSITION (PSX3.SAT): From over PSX VORTAC on PSX R-253 and THX R-073 to THX VORTAC, then on SAT R-158 to SAT VORTAC.

SC-5, 22 FEB 2024 to 21 MAR 2024

SC-5, 22 FEB 2024 to 21 MAR 2024