

WAAS CH 90341 W36A	APP CRS 359°	Rwy Idg TDZE Apt Elev	5500 979 979
--	------------------------	-----------------------------	---

RNAV (GPS) RWY 36

JAMES H CONNELL FLD AT INDEPENDENCE MUNI (IIB)

RNP APCH.

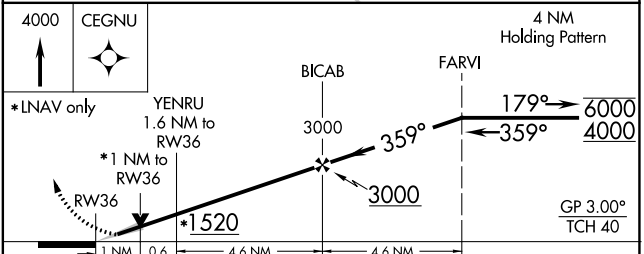
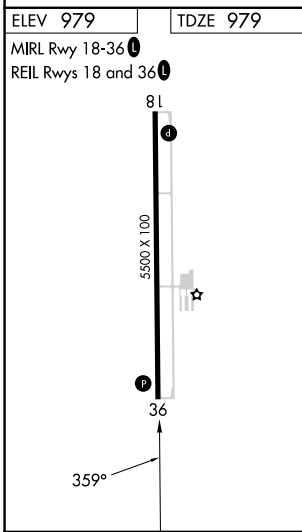
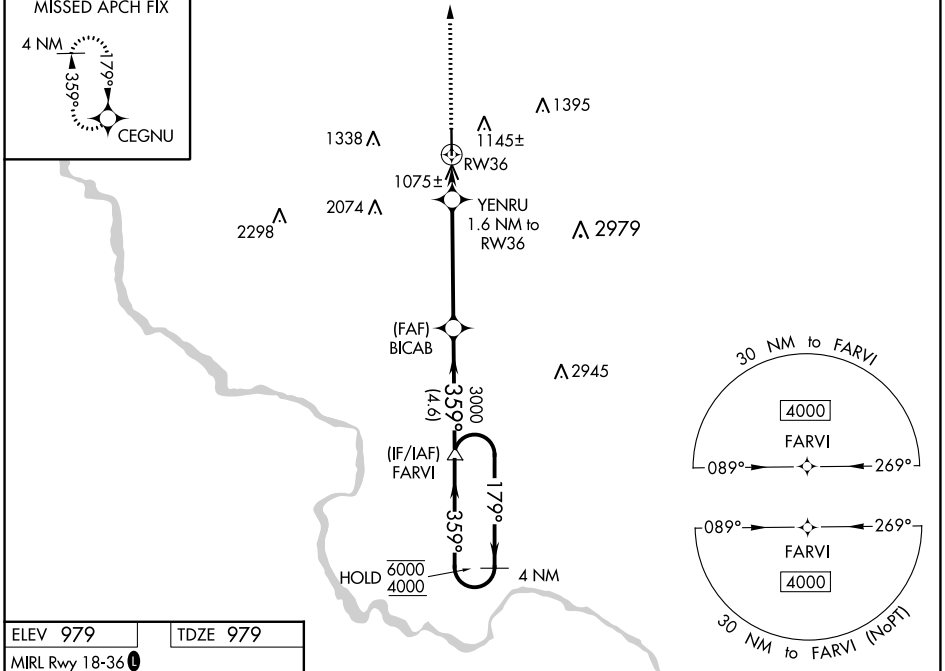
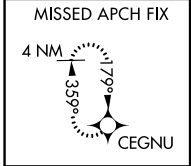
▼
▲ For uncompensated Baro-VNAV systems, LNAV/VNAV NA below -16°C or above 54°C.

MISSED APPROACH: Climb to 4000 direct CEGNU and hold, continue climb-in-hold to 4000.

AWOS-3
120.825

WATERLOO APP CON ★
118.9 251.15

UNICOM
122.8 (CTAF) 0



CATEGORY	A	B	C	D
LPV DA		1229- ³ / ₄	250 (300- ³ / ₄)	
LNAV/VNAV DA		1236- ⁷ / ₈	257 (300- ⁷ / ₈)	
LNAV MDA		1340-1	361 (400-1)	
C CIRCLING	1500-1	521 (600-1)	1700-2 721 (800-2)	2440-3 1461 (1500-3)

RNAV (GPS) RWY 36

NC-3, 22 FEB 2024 to 21 MAR 2024

NC-3, 22 FEB 2024 to 21 MAR 2024