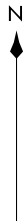


BUCKO TRANSITION (BUCKO.FRDM5):

- NOTE: RADAR required.
- NOTE: RNAV 1.
- NOTE: DME/DME/IRU or GPS required.
- NOTE: Turbojets only, turboprops as assigned by ATC only.
- NOTE: PROHIBITED AREA (P56) 1.5 NM north of DCA
AVOID - surface to FL180.
- NOTE: Maintain last assigned altitude until cleared to "descend via" the FRDMM5. ARTCC will issue landing direction assignment (north or south) and Potomac TRACON will issue runway assignments.



POTOMAC APP CON
118.675 323.175
DCA D-ATIS
132.65
KADW D-ATIS
133.675 251.05
*KDAATIS
128.175



MORGANTOWN
MGW

DRRON
FL310
FL270

BUCKO
FL310
17000
*5500
107°
(12)

HONNR
FL280 280K
FL240

BRVRY
FL260
FL220

COURG
FL230 280K
FL200

PLDGE
17000 280K
15000



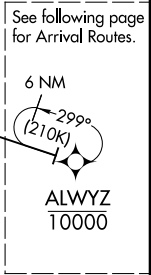
WEWIL
14000

NEVVR
12000

FORGT
11000 250K

SEPII
10000 250K

8000 *3400
(5)



ALWYZ
10000

See following page for Arrival Routes.

FRDMM FIVE ARRIVAL (RNAV) Transition Route
(ALWYZ.FRDM5) 20JUN19

WASHINGTON, DC

(ALWYZ.FRDM5) 21168
FRDMM FIVE ARRIVAL (RNAV) Transition Route

AL-443 (FAA)

WASHINGTON, DC

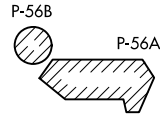
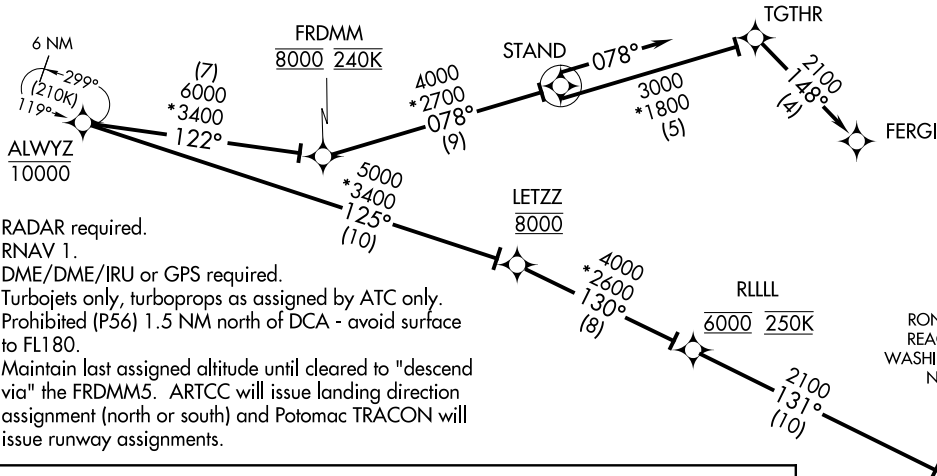
(CONTINUED ON FOLLOWING PAGE)

NOTE: Chart not to scale.

FRDMM FIVE ARRIVAL (RNAV) Arrival Routes
(ALWYZ,FRDMM5) 20JUN19

WASHINGTON, DC

POTOMAC APP CON
118.675 323.175
DCA D-ATIS
132.65
KADW D-ATIS
133.675 251.05
*KDA AAF ATIS
128.175



RONALD REAGAN WASHINGTON NTL

JOINT BASE ANDREWS

DAVISON AAF



NOTE: Chart not to scale.

- NOTE: RADAR required.
- NOTE: RNAV 1.
- NOTE: DME/DME/IRU or GPS required.
- NOTE: Turbojets only, turboprops as assigned by ATC only.
- NOTE: Prohibited (P56) 1.5 NM north of DCA - avoid surface to FL180.
- NOTE: Maintain last assigned altitude until cleared to "descend via" the FRDMM5. ARTCC will issue landing direction assignment (north or south) and Potomac TRACON will issue runway assignments.

ARRIVAL ROUTE DESCRIPTION

LANDING DCA RWYS 1, 4, 33, and ADW RWYS 1L/R and LANDING DAA: From ALWYZ on track 125° to cross LETZZ at 8000, then on track 130° to cross RLLLL at 6000 and at 250K, then on track 131° to VCTRY, then on track 189° to HEROO, then on track 189°. Expect radar vectors to final approach course.

LANDING DCA RWYS 15, 19, 22: From ALWYZ on track 122° to cross FRDMM at 8000 and 240K, then on track 078° to STAND, then on track 078° to TGTHR, then on track 148° to FERGI, expect LDA/DME RWY 19, RNAV (RNP) RWY 19, RIVER VISUAL RWY 19 or radar vectors to final approach course.

LANDING ADW RWYS 19L/R: From ALWYZ on track 122° to cross FRDMM at 8000 and at 240K, then on track 078° to STAND, then on track 078°. Expect radar vectors to final approach course.

(ALWYZ,FRDMM5) 21168
FRDMM FIVE ARRIVAL (RNAV) Arrival Routes

AL-443 (FAA)

WASHINGTON, DC

ARRIVAL ROUTE DESCRIPTION

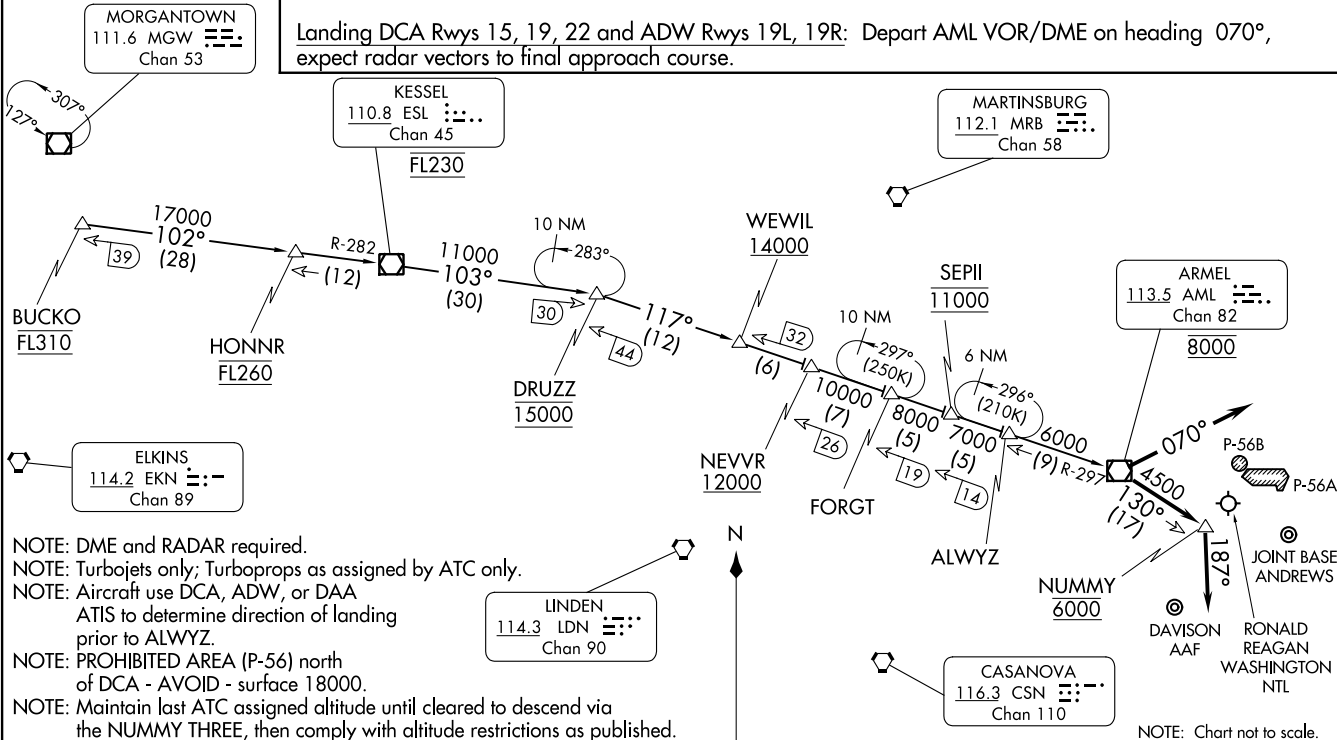
BUCKO TRANSITION (BUCKO.NUMMY3): From over BUCKO on ESL R-282 to ESL VOR/DME, then on ESL R-103 to DRUZZ, then on AML R-297 to AML VOR/DME.

Landing DCA Rwy 1, 4, 33, ADW Rwy 1L, 1R, and DAA: From over AML VOR/DME on AML VOR/DME R-130 to cross NUMMY at 6000, then on heading 187°, expect radar vectors to final approach course.

Landing DCA Rwy 15, 19, 22 and ADW Rwy 19L, 19R: Depart AML VOR/DME on heading 070°, expect radar vectors to final approach course.

NUMMY THREE ARRIVAL
 (AML.NUMMY3) 20JUN19

NUMMY THREE ARRIVAL
 23334

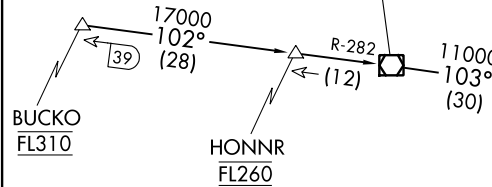


POTOMAC APP CON
 118.675 323.175
 DCA D-ATIS 132.65
 KADW D-ATIS
 133.675 251.05
 *KDA A ATIS
 128.175

MORGANTOWN
 111.6 MGW
 Chan 53

KESSEL
 110.8 ESL
 Chan 45
 FL230

MARTINSBURG
 112.1 MRB
 Chan 58



ELKINS
 114.2 EKN
 Chan 89

LINDEN
 114.3 LDN
 Chan 90

NOTE: Chart not to scale.

AL-443 (FAA)

WASHINGTON, DC

WASHINGTON, DC

TIKEE FOUR ARRIVAL (RNAV)
(TIKEE.TIKEE4) 20APR23

POTOMAC APP CON
120.45 306.925
DCA D-ATIS
132.65
ADW D-ATIS
133.675 251.05
*DAA ATIS
128.175

RNAV 1 - DME/DME/IRU or GPS.
RADAR required.

ARRIVAL ROUTE DESCRIPTION

BBONE TRANSITION (BBONE.TIKEE4):
KESSEL TRANSITION (ESL.TIKEE4):
SEALZ TRANSITION (SEALZ.TIKEE4):

All aircraft types landing HEF/NYG/RMN/HWY/CJR/EZF:
From TIKEE on track 090° to JETIS, then on heading 090° or as assigned by ATC. Expect RADAR vectors to final approach course.

Props and Turboprop aircraft landing DAA/W00/VKX/ADW/
2W5/DCA: From TIKEE on track 122° to GILFF, then on
track 090° to HIGPO, then on heading 090° or as assigned by ATC.
Expect RADAR vectors to final approach course.

NOTE: Procedure available to all type aircraft landing the following airports: CJR, HWY, HEF, RMN, EZF, NYG.

NOTE: Props or Turboprop aircraft only landing the following airports: DAA, 2W5, VKX, W00, DCA, ADW.

KESSEL
ESL
FL190



7000
*6300
178°
(37)

BBONE

7000
*6300
107°
(12)

LURAY 7000
*6300
(7)

6300
087°
(9)

(3)
5200
090°

JETIS

090°

7000
*6300
086°
(42)

SEALZ

LLBEE
9000

TIKEE

090°

(3)

5200

122°

(41)

WARRENTON/
FAUQUIER

CULPEPER
RGNL

STAFFORD
RGNL

3000
*1500

090°
(3)

GILFF

SHANNON

MANASSAS RGNL/
HARRY P DAVIS FLD

DAVISON AAF

QUANTICO MCAF
(TURNER FLD)

MARYLAND

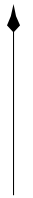
RONALD REAGAN
WASHINGTON
NTL

JOINT BASE
ANDREWS

POTOMAC
AIRFIELD

FREEWAY

N



NOTE: Chart not to scale

WASHINGTON, DC

WASHINGTON, DC

TIKEE FOUR ARRIVAL (RNAV)
(TIKEE.TIKEE4) 23110

AL-443 (FAA)

TRUPS FOUR ARRIVAL
(TRUPS, TRUPS4) 29MAR18

TRUPS FOUR ARRIVAL (RNAV) Transition Routes

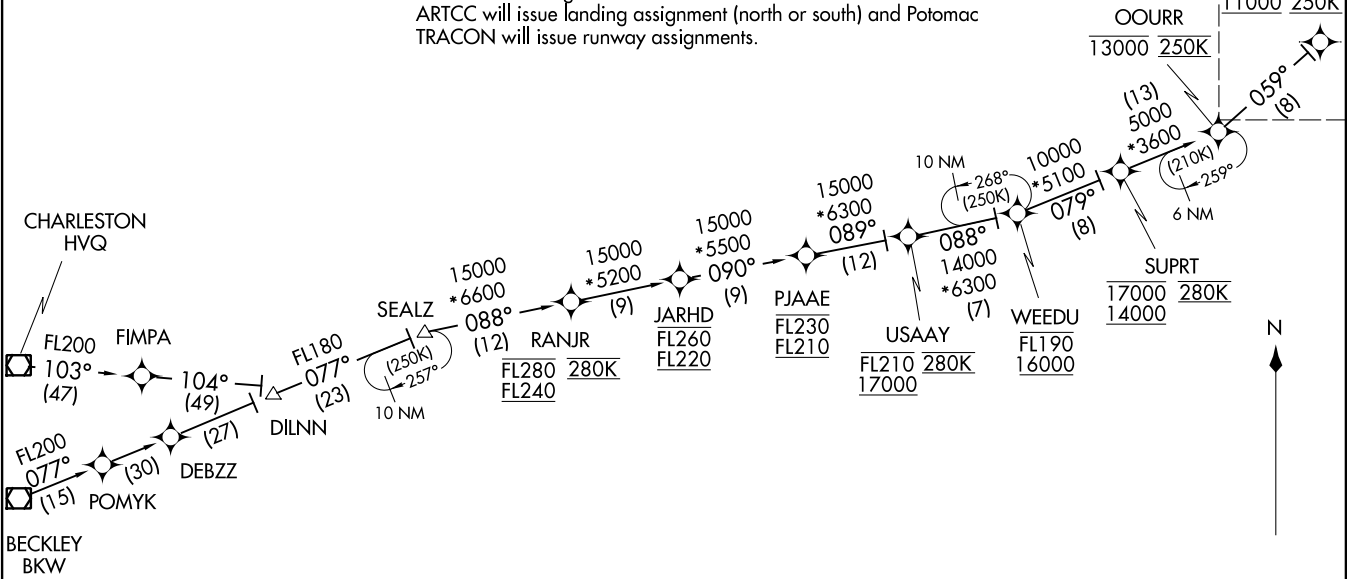
WASHINGTON, DC

POTOMAC APP CON
118.675 323.175
DCA D-ATIS
132.65
KADW D-ATIS
133.675 251.05
*KDAW ATIS
128.175

- NOTE: RADAR required.
 - NOTE: RNAV 1.
 - NOTE: DME/DME/IRU or GPS required.
 - NOTE: Turbojets only; turboprops as assigned by ATC only.
 - NOTE: Prohibited area (P-56) north of DCA-avoid-surface to FL180.
 - NOTE: Maintain last assigned altitude until cleared to "descend via" the TRUPS4.
- ARTCC will issue landing assignment (north or south) and Potomac TRACON will issue runway assignments.

See following page for arrival routes.

TRUPS	
11000	250K



TRUPS, TRUPS4) 21168

TRUPS FOUR ARRIVAL (RNAV) Transition Routes

WASHINGTON, DC

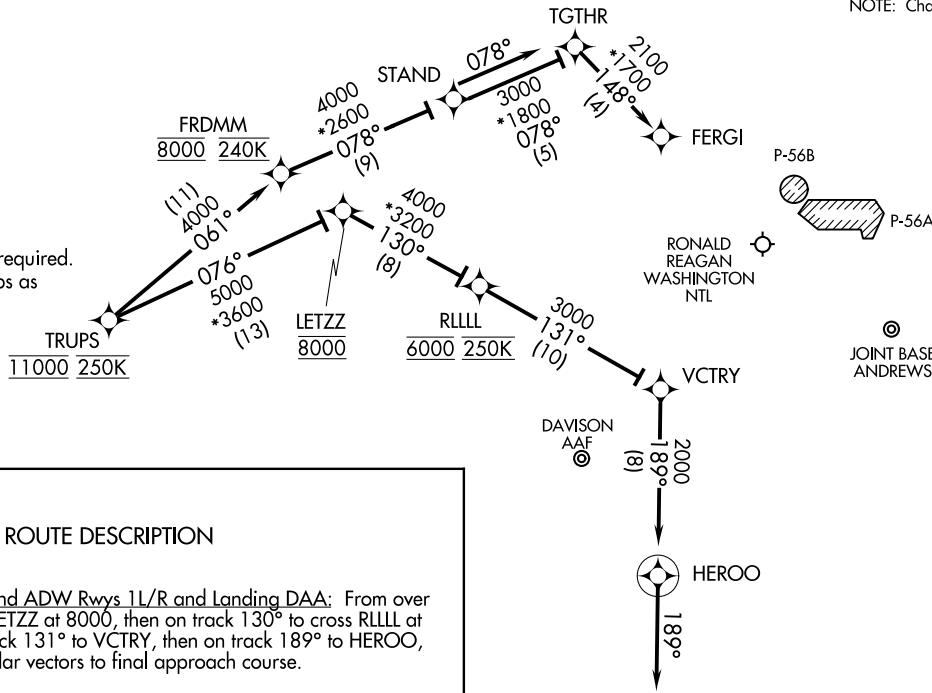
AL-443 (FAA)

BECKLEY TRANSITION (BKW.TRUPS4):
 CHARLESTON TRANSITION (HVQ.TRUPS4):

(CONTINUED ON FOLLOWING PAGE)

NOTE: Chart not to scale.

NOTE: Chart not to scale.



ARRIVAL ROUTE DESCRIPTION

Landing DCA Rwy 1, 4, 33, and ADW Rwy 11/R and Landing DAA: From over TRUPS on track 076° to cross LETZZ at 8000, then on track 130° to cross RLLLL at 6000 and at 250K, then on track 131° to VCTRY, then on track 189° to HEROO, then on track 189°. Expect radar vectors to final approach course.

Landing DCA Rwy 15, 19, 22: From over TRUPS on track 061° to cross FRDMM at 8000 and 240K, then on track 078° to STAND, then on track 078° to TGTHR, then on track 148° to FERGI. Expect LDA/DME Rwy 19, RNAV/RNP Rwy 19, RIVER VISUAL Rwy 19 or radar vectors to final approach course.

Landing ADW Rwy 19L/R: From over TRUPS on track 061° to cross FRDMM at 8000 and at 240K, then on track 078° to STAND, then on track 078°.

Expect radar vectors to final approach course.

- NOTE: Prohibited area (P-56) north of DCA-avoid surface to FL180.
- NOTE: Maintain last assigned altitude until cleared to "descend via" the TRUPS4. ARTCC will issue landing assignment (north or south) and Potomac TRACON will issue runway assignments.

TRUPS FOUR ARRIVAL (RNAV) Arrival Routes
(TRUPS, TRUPS4) 29MARI8

WASHINGTON, DC

TRUPS FOUR ARRIVAL (RNAV) Arrival Routes
(TRUPS, TRUPS4) 21224

AL-443 (FAA)

WASHINGTON, DC

D-ATIS
133.675 251.05
ANDREWS TOWER
118.4 349.0
POTOMAC APP CON
133.75 254.35

NOTE: RADAR required.
NOTE: RNAV 1.
NOTE: DME/DME/IRU or GPS required.
NOTE: P56 area A/B 1.5 NM north of DCA,
avoid - surface to 18000 MSL.

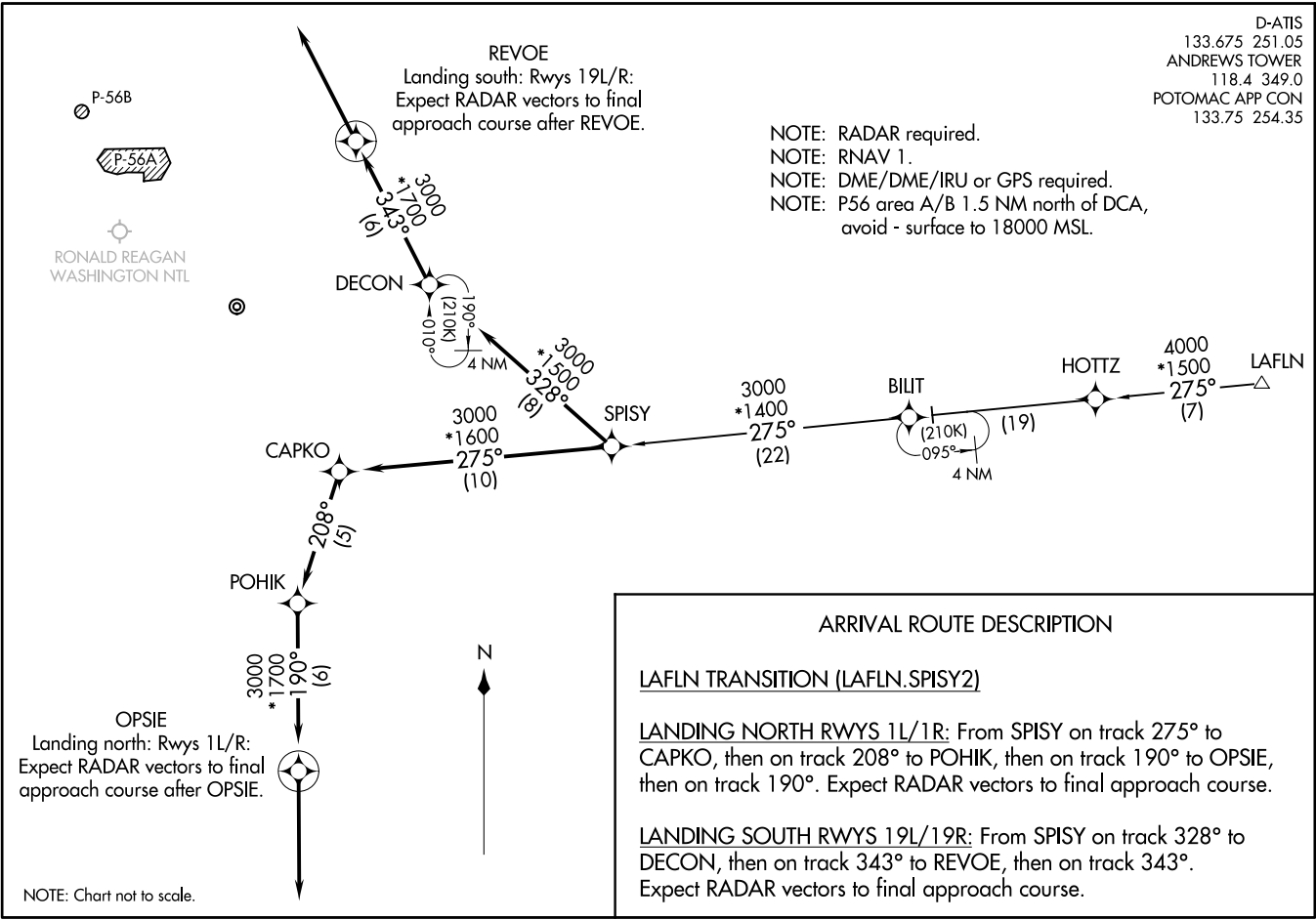
(SPISY.SPISY2) 23222
SPISY TWO ARRIVAL (RNAV)

AL-561 (FAA)

JOINT BASE ANDREWS (ADDW)
CAMP SPRINGS, MARYLAND

SPISY TWO ARRIVAL (RNAV)
(SPISY.SPISY2) 10DECI5

JOINT BASE ANDREWS (ADDW)
CAMP SPRINGS, MARYLAND



VUDOO TWO ARRIVAL (RNAV) Transition Routes

POTOMAC APP CON
126.4 282.375
D-ATIS
133.675 251.05
TOWER
118.4 349.0

See following page
for arrival routes

VUDOO
9000

R-6611A & B

R-6613A

R-6601B & C

R-6601A

R-4006

9000
*1500
045°
(10)

9000
*1500
078°
(16)

(6)
10
091°
*0006

10 NM

(230K)
190°

13000
*1600
010°
(26)

6 NM

218°
(210K)
*5000
038°
(6)

BEEVR
12000

10 NM

211°
(10)
*11000
030°
(10)

GOLOE
13000

- NOTE: RADAR required.
- NOTE: RNAV 1.
- NOTE: DME/DME/IRU or GPS required.
- NOTE: P56 area A/B 1.5 NM north of DCA, avoid surface to 18000 MSL.

11000
*2000
030°
(10)

HANKC

13000
*2000
022°
(16)

THHMP

(CONTINUED ON FOLLOWING PAGE)
(NARRATIVE ON FOLLOWING PAGE)

BEEVR TRANSITION (BEEVR.VUDOO2): (ATC assigned only).
 CIBAC TRANSITION (CIBAC.VUDOO2)
 THHMP TRANSITION (THHMP.VUDOO2)

NOTE: Chart not to scale.

NE-3, 22 FEB 2024 to 21 MAR 2024

NE-3, 22 FEB 2024 to 21 MAR 2024

VUDOO TWO ARRIVAL (RNAV) Transition Routes

(VUDOO.VUDOO2) 21168

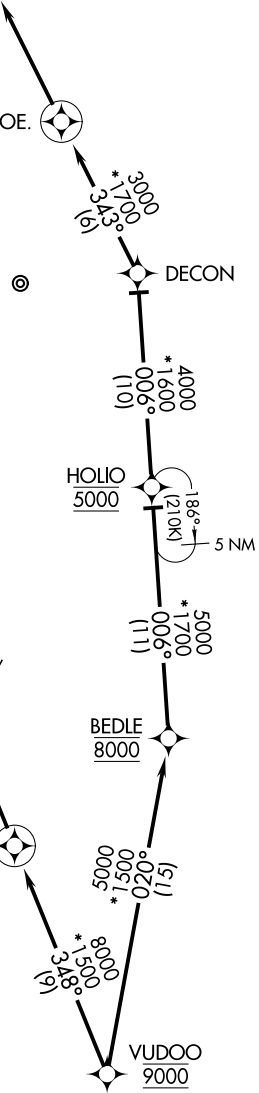
AL-561

JOINT BASE ANDREWS (ADW)
CAMP SPRINGS, MARYLAND

VUDOO TWO ARRIVAL (RNAV) Arrival Routes

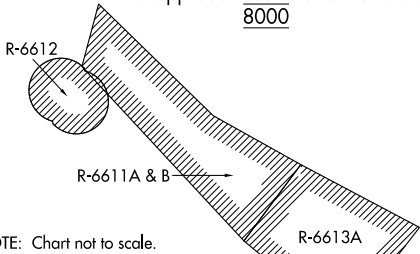
POTOMAC APP CON
126.4 282.375
D-ATIS
133.675 251.05
TOWER
118.4 349.0

REVOE
Landing south: Rwy 19L/R:
Expect RADAR vectors to
final approach course after REVOE.



- NOTE: RADAR required.
- NOTE: RNAV 1.
- NOTE: DME/DME/IRU or GPS required.
- NOTE: P56 area A/B 1.5 NM north of DCA, avoid surface to 18000 MSL.

FUNNY
Landing north: Rwy 1L/R:
Expect RADAR vectors to
final approach course after FUNNY.
8000



NOTE: Chart not to scale.

ARRIVAL ROUTE DESCRIPTION

LANDING NORTH RWYS 1L/R: From VUDOO on track 348° to cross FUNNY at 8000, then on track 348°. Expect RADAR vectors to final approach course.

LANDING SOUTH RWYS 19L/R: From VUDOO on track 020° to cross BEDLE at 8000, then on track 006° to cross HOLIO at 5000, then on track 006° to DECON, then on track 343° to REVOE, then on track 343°. Expect RADAR vectors to final approach course.

VUDOO TWO ARRIVAL (RNAV) Arrival Routes

(VUDOO.VUDOO2) 15344

CAMP SPRINGS, MARYLAND
JOINT BASE ANDREWS (ADW)

NE-3, 22 FEB 2024 to 21 MAR 2024

NE-3, 22 FEB 2024 to 21 MAR 2024