

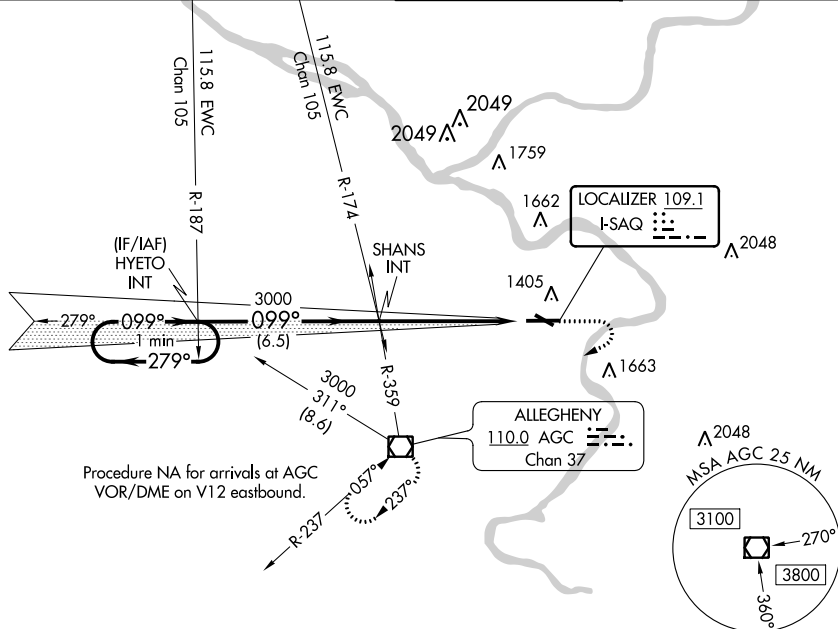
LOC I-SAQ <b>109.1</b>	APP CRS <b>099°</b>	Rwy ldg TDZE Apt Elev	<b>6501</b> <b>1251</b> <b>1252</b>
---------------------------	------------------------	-----------------------------	---

# ILS or LOC RWY 10

ALLEGHENY COUNTY (AGC)

**⚠** MISSED APPROACH: Climb to 2000 then climbing right turn to 3000 direct AGC VOR/DME and hold.

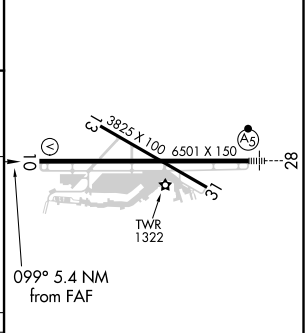
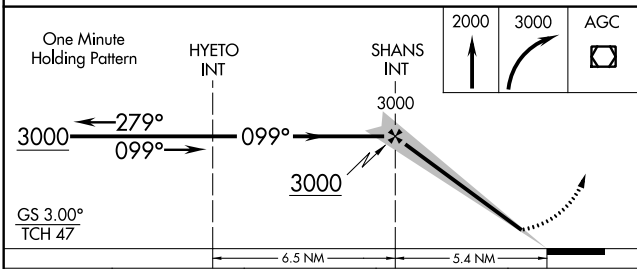
ATIS <b>120.55</b>	PITTSBURGH APP CON <b>119.35 285.575 337.4</b>	ALLEGHENY TOWER <b>121.1 239.0</b>	GND CON <b>121.7</b>
-----------------------	---	---------------------------------------	-------------------------



NE-4, 28 JAN 2021 to 25 FEB 2021

NE-4, 28 JAN 2021 to 25 FEB 2021

ELEV 1252	TDZE 1251
-----------	-----------



CATEGORY	A	B	C	D
S-ILS 10	1451-3/4		200 (200-3/4)	
S-LOC 10	1760-1	509 (600-1)	1760-1 3/8	509 (600-1 3/8)
<b>C</b> CIRCLING	1760-1	508 (600-1)	1980-2 728 (800-2)	1980-2 1/4 728 (800-2 1/4)

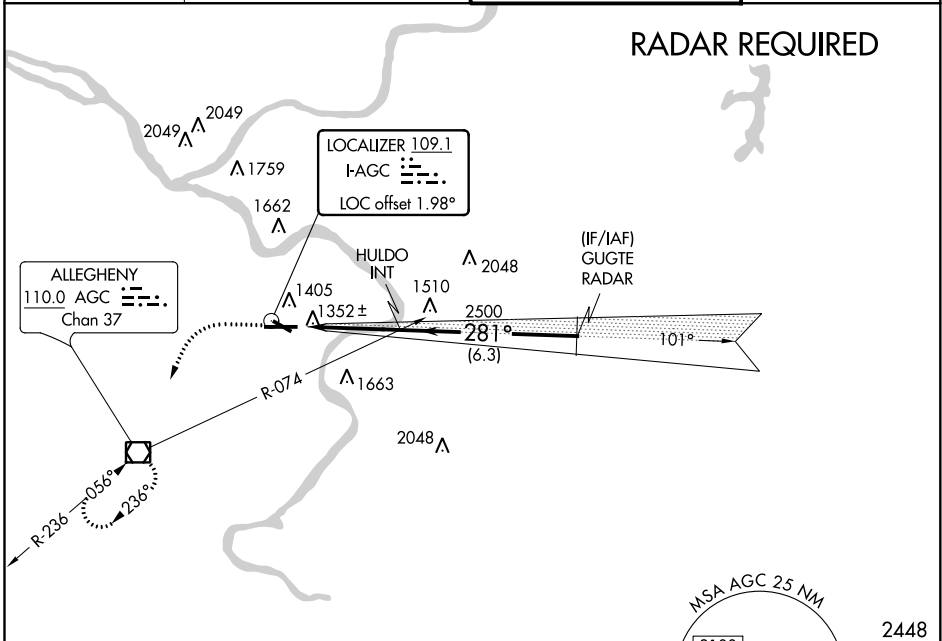
REIL Rwy 10, 13, and 31	HIRL Rwy 10-28 and 13-31				
FAF to MAP 5.4 NM					
Knots	60	90	120	150	180
Min:Sec	5:24	3:36	2:42	2:10	1:48

LOC I-AGC <b>109.1</b>	APP CRS <b>281°</b>	Rwy ldg TDZE Apt Elev	<b>6501</b> <b>1251</b> <b>1252</b>
---------------------------	------------------------	-----------------------------	---

**ILS or LOC RWY 28**  
ALLEGHENY COUNTY (AGC)

For inoperative MALS, increase S-LOC Cats C and D visibility to RVR 6000.		MALS 	MISSED APPROACH: Climb to 2000 then climbing left turn to 3000 direct AGC VOR/DME and hold.
---	--	----------	---

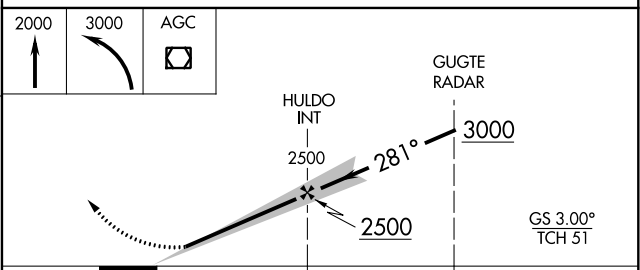
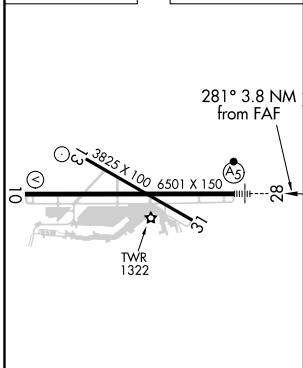
ATIS <b>120.55</b>	PITTSBURGH APP CON <b>119.35 285.575</b>	ALLEGHENY TOWER <b>121.1 239.0</b>	GND CON <b>121.7</b>
-----------------------	---	---------------------------------------	-------------------------



NE-4, 28 JAN 2021 to 25 FEB 2021

NE-4, 28 JAN 2021 to 25 FEB 2021

ELEV 1252	TDZE 1251
-----------	-----------



REIL Rwy 10, 13, and 31 HIRL Rwy 10-28 and 13-31					
FAF to MAP 3.8 NM					
Knots	60	90	120	150	180
Min:Sec	3:48	2:32	1:54	1:31	1:16
<input checked="" type="checkbox"/> CIRCLING	1720-1	468 (500-1)	728 (800-2)	1980-2	1980-2¼
CATEGORY	A	B	C	D	
S-ILS 28	1501/24 250 (300-½)				
S-LOC 28	1660/24	409 (500-½)	1660/40	409 (500-¾)	
	1720-1		728 (800-2)		728 (800-2¼)

WAAS CH <b>97325</b> <b>W10A</b>	APP CRS <b>099°</b>	Rwy Idg TDZE Apt Elev <b>6501</b> <b>1251</b> <b>1252</b>
--	------------------------	--

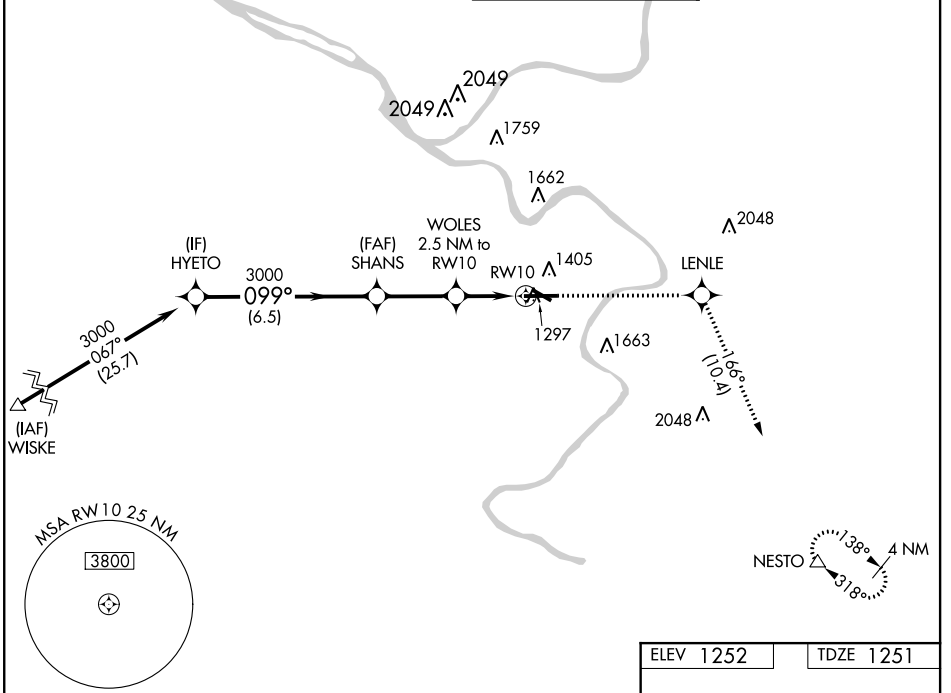
# RNAV (GPS) RWY 10

ALLEGHENY COUNTY (AGC)

For uncompensated Baro-VNAV systems, LNAV/VNAV NA below -17°C (2°F) or above 54°C (130°F). DME/DME RNP-0.3 NA.

MISSED APPROACH: Climb to 3100 direct LENLE and on track 166° to NESTO and hold.

ATIS <b>120.55</b>	PITTSBURGH APP CON <b>119.35 285.575</b>	ALLEGHENY TOWER <b>121.1 239.0</b>	GND CON <b>121.7</b>
-----------------------	---	---------------------------------------	-------------------------



NE-4, 28 JAN 2021 to 25 FEB 2021

NE-4, 28 JAN 2021 to 25 FEB 2021

ELEV 1252		TDZE 1251		
<p>HYETO</p> <p>3000 — 099° —&gt; SHANS</p> <p>GP 3.00° TCH 47</p> <p>6.5 NM</p>		<p>3100 LENLE tr NESTO</p> <p>WOLES 2.5 NM to RWY 10</p> <p>* LNAV only.</p> <p>* 1.1 NM to RWY 10</p> <p>3000</p> <p>* 2080</p> <p>2.8 NM</p> <p>1.4 NM</p> <p>1.1 NM</p>		
CATEGORY	A	B	C	D
LPV DA		1451-3/4	200 (200-3/4)	
LNAV/VNAV DA		1554-1	303 (400-1)	
LNAV MDA	1660-1	409 (500-1)	1660-1 1/8	409 (500-1 1/8)
CIRCLING	1720-1	468 (500-1)	1980-2 728 (800-2)	1980-2 1/4 728 (800-2 1/4)
<p>REIL Rwy 10, 13, and 31</p> <p>HIRL Rwy 10-28 and 13-31</p>				

WAAS CH <b>65625</b> <b>W28A</b>	APP CRS <b>279°</b>	Rwy ldg TDZE <b>1251</b> Apt Elev <b>1252</b>	<b>6501</b>
--	------------------------	---	-------------

# RNAV (GPS) RWY 28

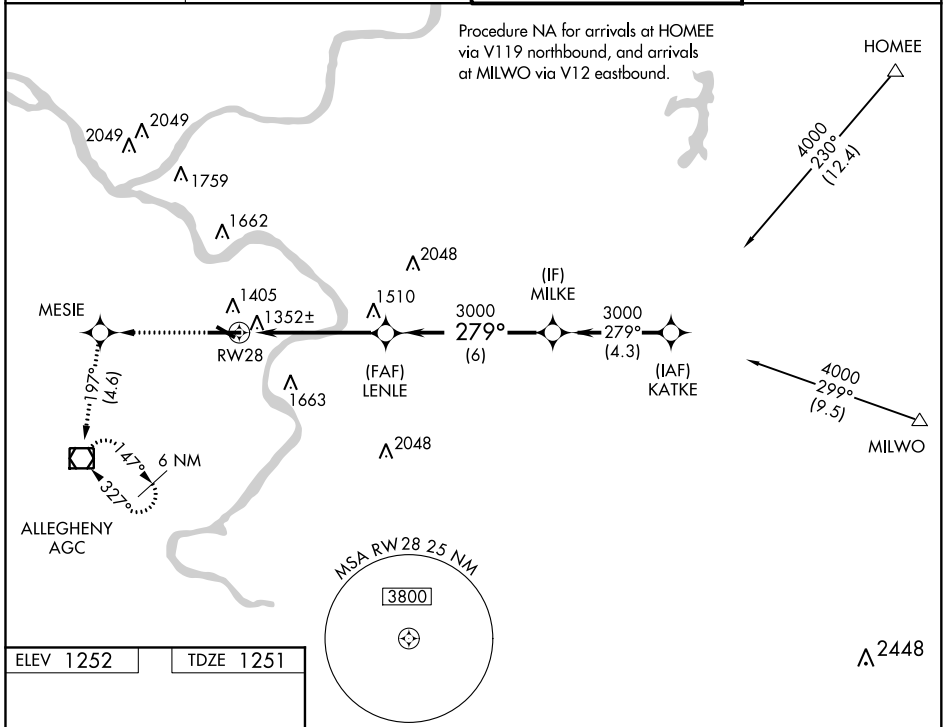
ALLEGHENY COUNTY (AGC)

Baro-VNAV NA below -17°C (2°F).  
DME/DME RNP-0.3 NA.  
For inoperative MALSRS, increase LPV visibility to RVR 5000 all Cats.

MALSRS

MISSED APPROACH: Climb to 3000 direct MESIE and via 197° track to AGC VOR/DME and hold.

ATIS <b>120.55</b>	PITTSBURGH APP CON <b>119.35 285.575</b>	ALLEGHENY TOWER <b>121.1 239.0</b>	GND CON <b>121.7</b>
-----------------------	---	---------------------------------------	-------------------------



ELEV 1252 | TDZE 1251

3000 MESIE tr 197° AGC Procedure Turn NA

LENLE MILKE 3000

\*1.3 NM to RW28

\*LNAV only.

GP 3.00° TCH 51

1.3 4 NM 6 NM

CATEGORY	A	B	C	D
LPV DA	1563/24 312 (400-½)			
LNAV/VNAV DA	1625/40 374 (400-¾)			
LNAV MDA	1700/24 449 (500-½)	1700/40 449 (500-¾)	1700/50 449 (500-1)	
<input checked="" type="checkbox"/> CIRCLING	1720-1¼ 468 (500-1¼)	1980-2 728 (800-2)	1980-2¼ 728 (800-2¼)	

REIL Rws 10, 13, and 31  
HIRL Rws 10-28 and 13-31