

LOC/DME I-APC 111.3 Chan 50	APP CRS 006°	Rwy Idg TDZE Apt Elev	5930 17 36
------------------------------------------	------------------------	-----------------------------	---------------------------------------

ILS or LOC Z RWY 1L

NAPA COUNTY (APC)

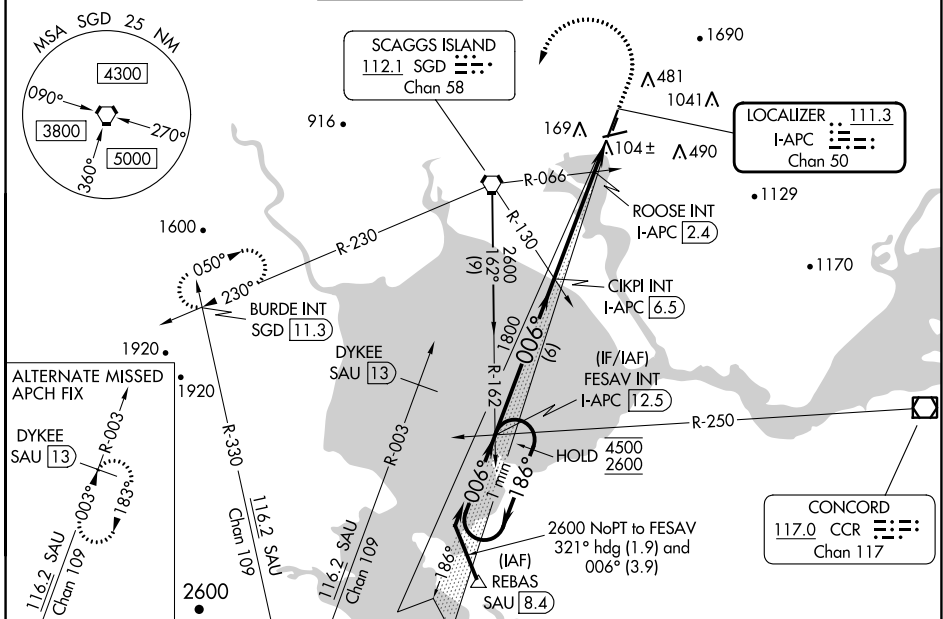
⚠ Autopilot coupled approach NA below 530. Inop table does not apply to S-ILS 1L. Circling Cats A/B/C NA northeast of Rwy 19R and 24. Circling Cat D NA east of Rwy 19L-1R. Circling Rwy 6 NA at night.

MALS



MISSED APPROACH: Climb to 500 then climbing left turn to 3200 direct SGD VORTAC and on SGD VORTAC R-230 to BURDE INT/SGD 11.3 DME and hold, continue climb-in-hold to 3200.

ATIS 124.05	OAKLAND CENTER 127.8 353.5	NAPA TOWER ★ 118.7 (CTAF) 257.8	GND CON 121.7	CLNC DEL 127.85	UNICOM 122.95
-----------------------	--------------------------------------	-------------------------------------------	-------------------------	---------------------------	-------------------------



SW-2, 22 FEB 2024 to 21 MAR 2024

SW-2, 22 FEB 2024 to 21 MAR 2024

One Minute Holding Pattern	FESAV INT I-APC [12.5]	500	3200	SGD	SGD R-230	BURDE INT
4500 ← 186°	← 006°					
2600	1800					
GS 3.00°	TCH 50					
CATEGORY	A	B	C	D	*LOC only	
S-ILS 1L		217-¾	200 (200-¾)			
S-LOC 1L	500-¾	483 (500-¾)	500-1½	483 (500-1½)		
C CIRCLING	600-1 564 (600-1)	680-1 644 (700-1)	1280-3 1244 (1300-3)	1300-3 1264 (1300-3)		
ROOSE FIX MINIMUMS (DUAL VOR RECEIVERS OR DME REQUIRED)						
S-LOC 1L		360-¾	343 (400-¾)			
C CIRCLING	600-1 564 (600-1)	680-1 644 (700-1)	1280-3 1244 (1300-3)	1300-3 1264 (1300-3)		

ELEV 36	TDZE 17
MIRL Rwy 6-24 and 1L-19R	
REIL Rwy 6	
FAF to MAP 5.5 NM	
Knots	60 90 120 150 180
Min:Sec	5:30 3:40 2:45 2:12 1:50

APP CRS	Rwy Idg	5008
062°	TDZE	21
	Apt Elev	36

RNAV (GPS) RWY 6

NAPA COUNTY (APC)

RNP APCH-GPS.

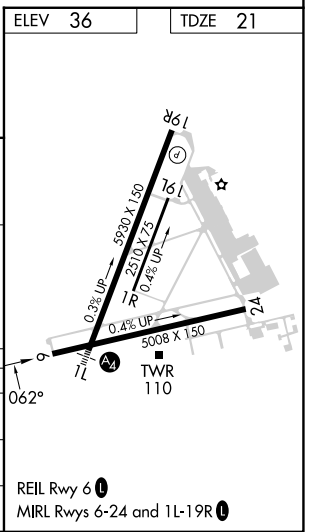
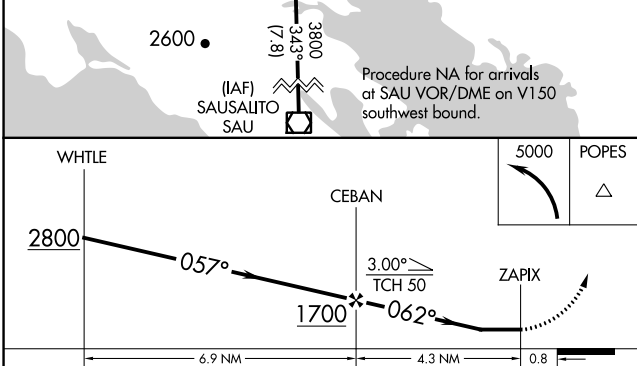
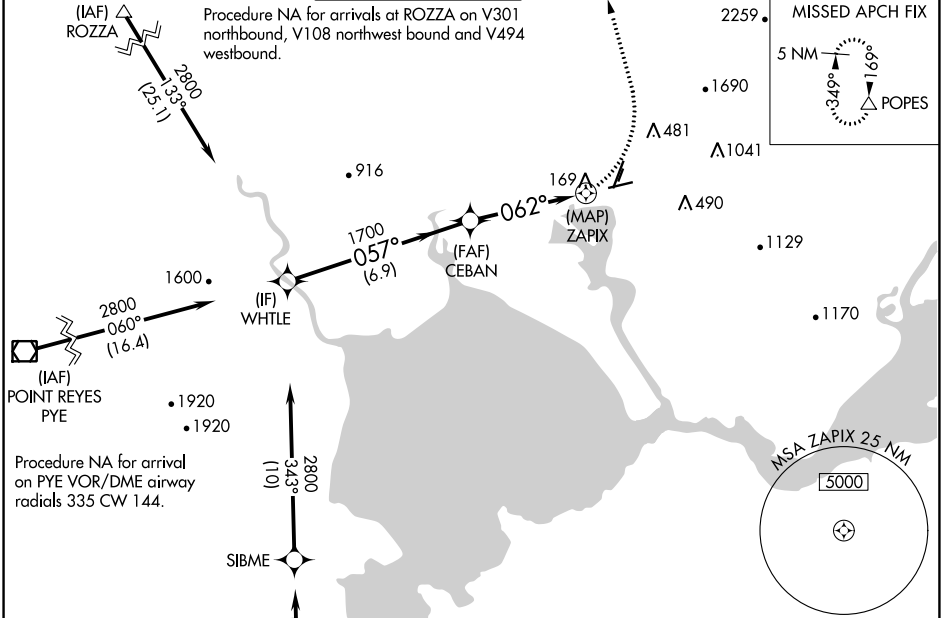
▼ Rwy 6 helicopter visibility reduction below $\frac{3}{4}$ SM NA.

▲ Circling Cats A/B/C NA east of Rwy 19R and northwest of Rwy 24. Circling Cat D NA east of Rwy 19L-1R.

MISSED APPROACH: Climbing left turn to 5000 direct POPES and hold, continue climb-in-hold to 5000.

*Missed approach requires minimum climb of 410 feet per NM to 2200.

ATIS 124.05	OAKLAND CENTER 127.8 353.5	NAPA TOWER * 118.7 (CTAF) 257.8	GND CON 121.7	CLNC DEL 127.85	UNICOM 122.95
-----------------------	--------------------------------------	-------------------------------------------	-------------------------	---------------------------	-------------------------



CATEGORY	A	B	C	D
LNAV MDA*	480-1	459 (500-1)	480-1 $\frac{3}{8}$	459 (500-1 $\frac{3}{8}$)
LNAV MDA	1340-1 $\frac{1}{4}$ 1319 (1400-1 $\frac{1}{4}$)	1340-1 $\frac{1}{2}$ 1319 (1400-1 $\frac{1}{2}$)	1340-3	1319 (1400-3)
C CIRCLING	1340-1 $\frac{1}{4}$ 1304 (1400-1 $\frac{1}{4}$)	1340-1 $\frac{1}{2}$ 1304 (1400-1 $\frac{1}{2}$)	1340-3	1304 (1400-3)

SW-2, 22 FEB 2024 to 21 MAR 2024

SW-2, 22 FEB 2024 to 21 MAR 2024

WAAS CH 56613 W01A	APP CRS 006°	Rwy Idg 5930 TDZE 17 Apt Elev 36
----------------------------------------	------------------------	-------------------------------------------------------------

RNAV (GPS) Y RWY 1L

NAPA COUNTY (APC)

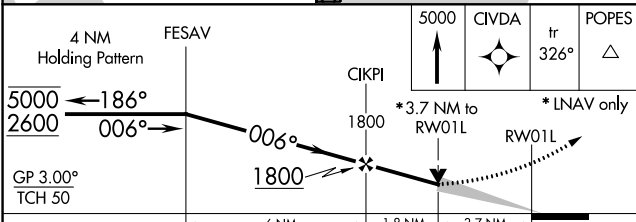
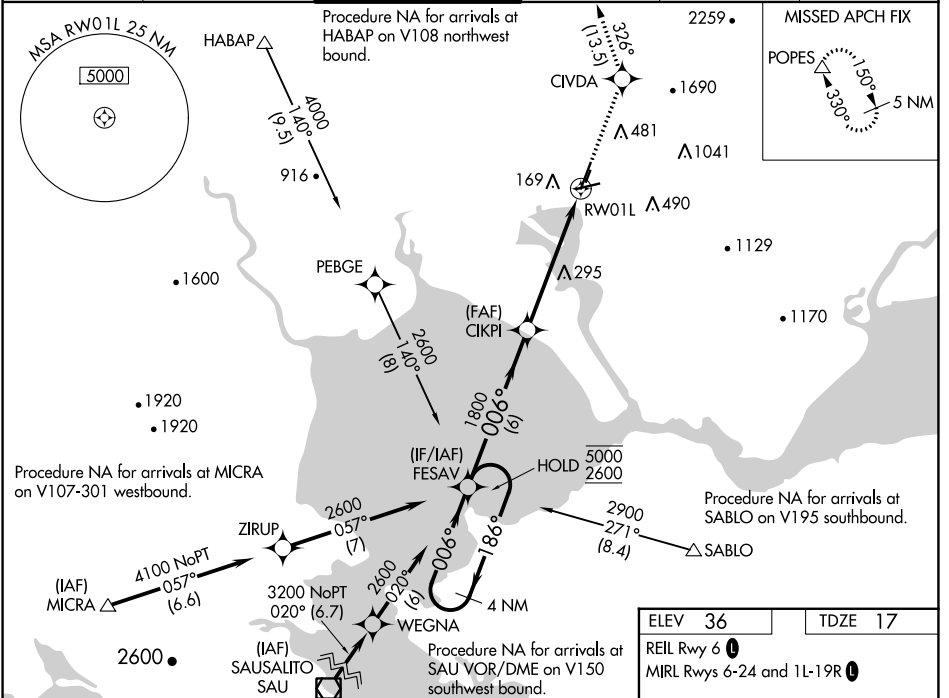
RNP APCH.

⚠ For uncompensated Baro-VNAV systems, LNAV/VNAV NA below -4°C or above 54°C. Circling Cats A/B/C NA northeast or Rwy's 19R and 24. Circling Cat D NA east of Rwy 19L-1R. Inop table does not apply to LPV, LNAV/VNAV all Cats, and LNAV Cats C/D. Circling Rwy 6 NA at night.

MALS

MISSED APPROACH: Climb to 5000 direct CIVDA and on track 326° to POPES and hold, continue climb-in-hold to 5000.

ATIS 124.05	OAKLAND CENTER 127.8 353.5	NAPA TOWER ★ 118.7 (CTAF) 0 257.8	GND CON 121.7	CLNC DEL 127.85	UNICOM 122.95
-----------------------	--------------------------------------	---------------------------------------------	-------------------------	---------------------------	-------------------------



CATEGORY	A	B	C	D
LPV DA		1252-5	1235 (1300-5)	
LNAV/VNAV DA		1051-4	1034 (1100-4)	
LNAV MDA	1260-1 1243 (1300-1)	1260-1¼ 1243 (1300-1¼)	1260-3 1243 (1300-3)	
C CIRCLING	1260-1¼ 1224 (1300-1¼)	1260-1½ 1224 (1300-1½)	1280-3 1244 (1300-3)	1300-3 1264 (1300-3)

ELEV 36	TDZE 17
---------	---------

REL Rwy 6

MIRL Rwy's 6-24 and 1L-19R

0.3% UP

0.4% UP

5008 X 150

TWR 110

006°

SW-2, 22 FEB 2024 to 21 MAR 2024

SW-2, 22 FEB 2024 to 21 MAR 2024


WAAS CH 40313 RNP W01B	APP CRS 006°	Rwy Idg 5930 TDZE 17 Apt Elev 36
--------------------------------------------	------------------------	-------------------------------------------------------------

RNAV (GPS) Z RWY 1L

NAPA COUNTY (APC)

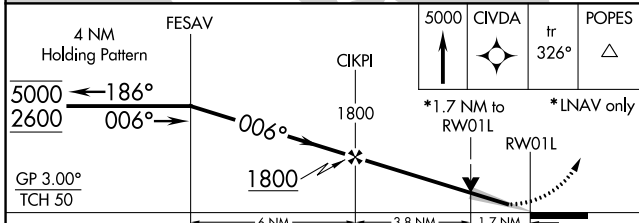
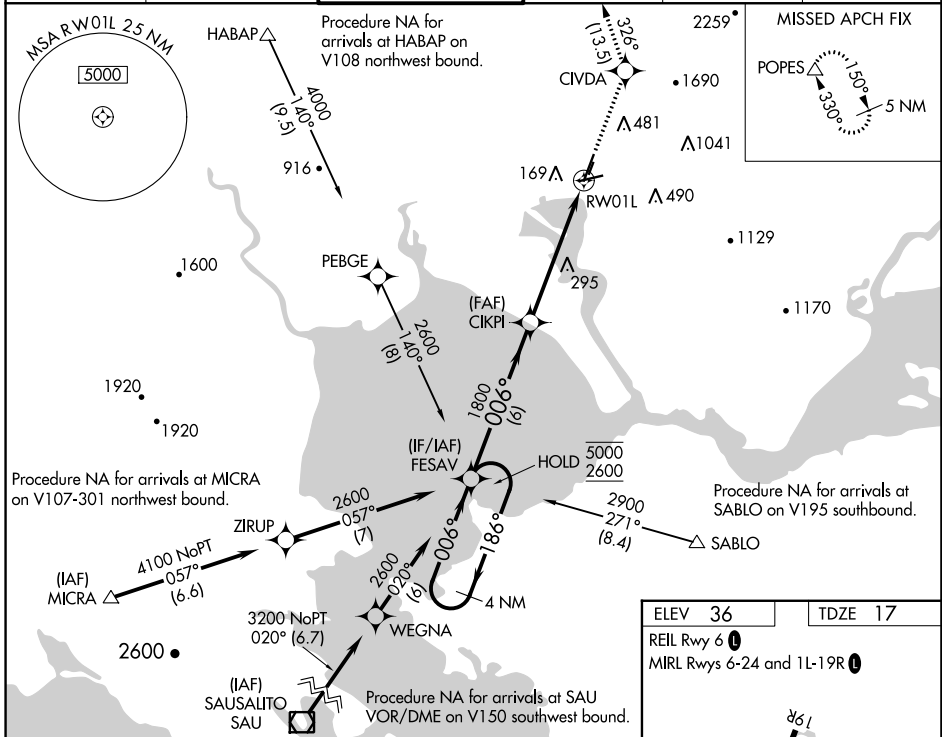
RNP APCH-GPS.

▼ For uncompensated Baro-VNAV systems, LNAV/VNAV NA below -4°C or above 54°C. Inop table does not apply to LPV minimums. For inop ALS, increase visibility LNAV/VNAV to 7/8 SM. Missed approach requires minimum climb of 420 feet per NM to 2200. If unable to meet climb gradient see RNAV (GPS) Y RWY 1L.

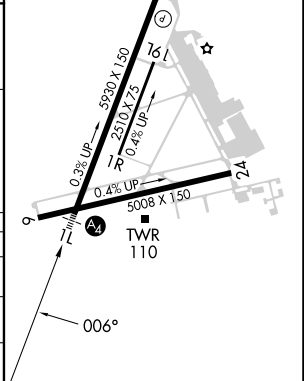
MALS 

MISSED APPROACH: Climb to 5000 direct CIVDA and on track 326° to POPES and hold, continue climb-in-hold to 5000.

ATIS 124.05	OAKLAND CENTER 127.8 353.5	NAPA TOWER ★ 118.7 (CTAF) 0 257.8	GND CON 121.7	CLNC DEL 127.85	UNICOM 122.95
-----------------------	--------------------------------------	---------------------------------------------	-------------------------	---------------------------	-------------------------



ELEV 36	TDZE 17
REL Rwy 6	
MIRL Rwy 6-24 and 1L-19R	



CATEGORY	A	B	C	D
LPV DA		217-3/4	200 (200-3/4)	
LNAV/VNAV DA		330-3/4	313 (300-3/4)	
LNAV MDA	560-3/4	543 (600-3/4)	560-13/8	543 (600-13/8)

SW-2, 22 FEB 2024 to 21 MAR 2024

SW-2, 22 FEB 2024 to 21 MAR 2024

VORTAC	SGD	APP CRS	Rwy Idg	5008
112.1		050°	TDZE	21
Chan 58			Apt Elev	36

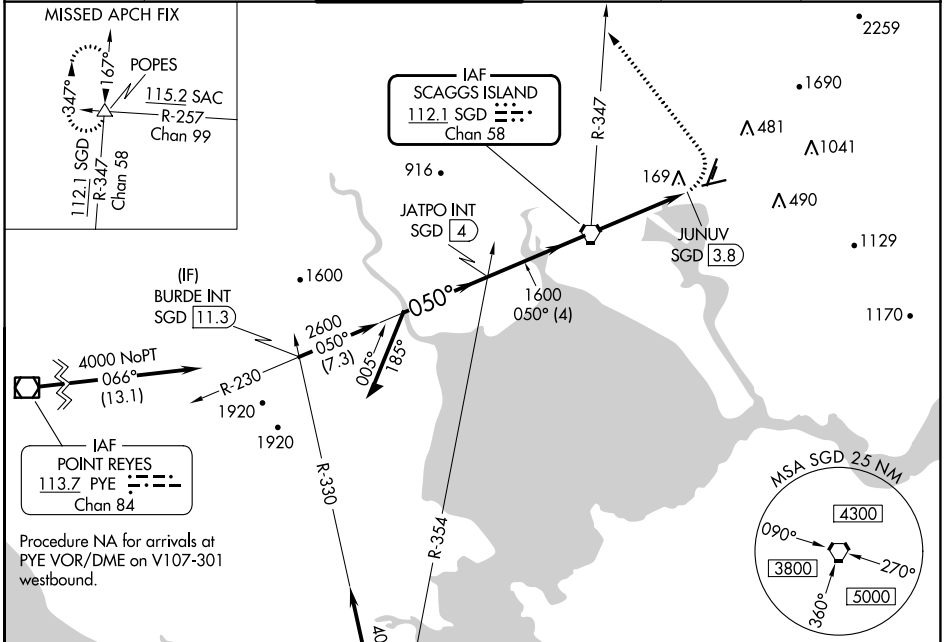
VOR RWY 6

NAPA COUNTY (APC)

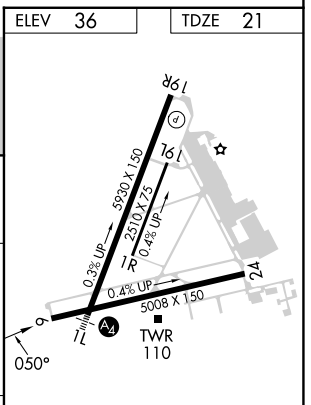
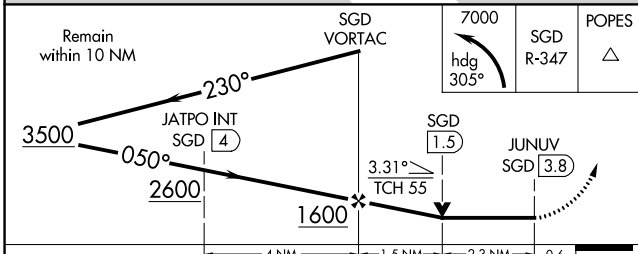
⚠ Rwy 6 helicopter visibility reduction below ¼ SM NA.
 Circling Cats A/B/C NA east of Rwy 19R and northwest of Rwy 24. Circling Cat D NA east of Rwy 19L-1R.

MISSED APPROACH: Climbing left turn to 7000 on heading 305° and SGD VORTAC R-347 to POPES INT and hold, continue climb-in-hold to 7000.

ATIS	OAKLAND CENTER	NAPA TOWER ★	GND CON	CLNC DEL	UNICOM
124.05	127.8 353.5	118.7 (CTAF) 257.8	121.7	127.85	122.95



ELEV	36	TDZE	21
------	----	------	----



CATEGORY	A	B	C	D
S-6	1080-1¼ 1059 (1100-1¼)	1080-1½ 1059 (1100-1½)	1080-3	1059 (1100-3)
C CIRCLING	1080-1¼ 1044 (1100-1¼)	1080-1½ 1044 (1100-1½)	1280-3 1244 (1300-3)	1300-3 1264 (1300-3)

REIL Rwy 6 **Ⓛ**

MIRL Rws 6-24 and 1L-19R **Ⓛ**

FAF to MAP 3.8 NM

Knots	60	90	120	150	180
Min:Sec	3:48	2:32	1:54	1:31	1:16

SW-2, 22 FEB 2024 to 21 MAR 2024

SW-2, 22 FEB 2024 to 21 MAR 2024