


LOC I-ASG 110.9	APP CRS 183°	Rwy Idg 4939 TDZE 1351 Apt Elev 1353
---------------------------	------------------------	---

AL-5165 (FAA)

ILS or LOC RWY 18

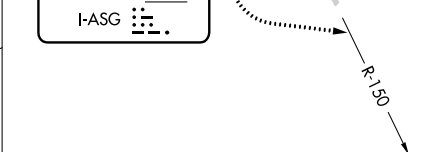
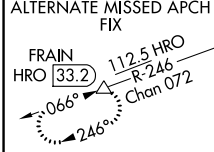
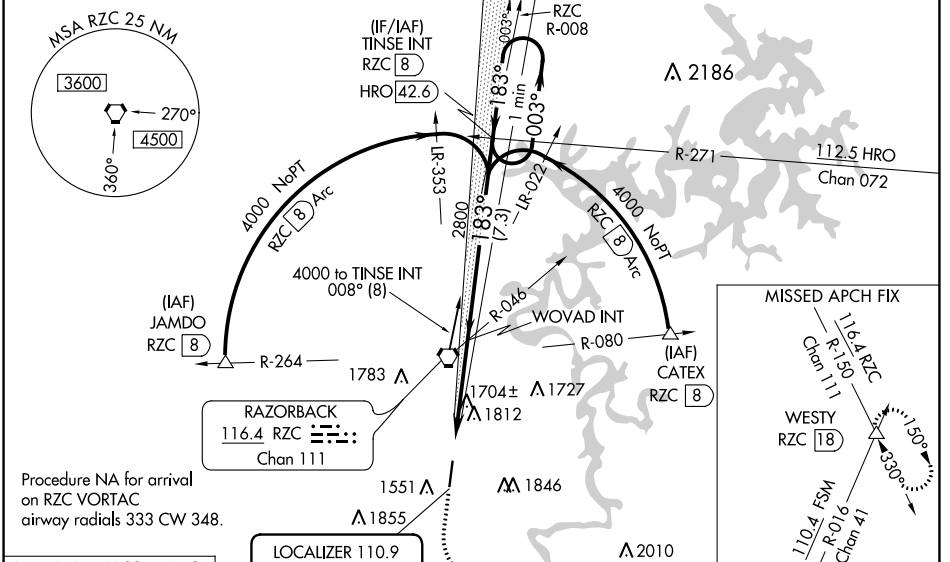
SPRINGDALE MUNI (ASG)

⚠ Circling NA east of Rwy 18-36. Rwy 18 helicopter visibility reduction below $\frac{3}{4}$ SM NA. Autopilot coupled approach NA below 1900. For inop ALS, increase S-ILS 18 visibility to $\frac{3}{8}$ SM.

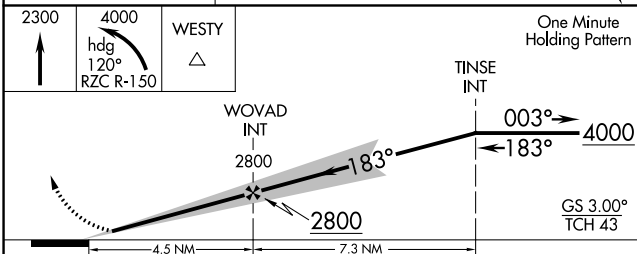
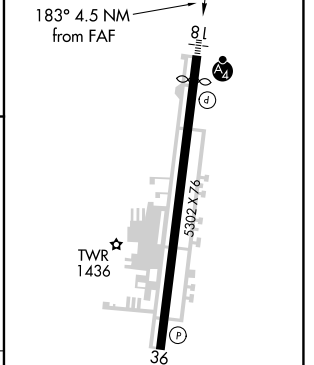
MALSF 

MISSED APPROACH: Climb to 2300 then climbing left turn to 4000 on heading 120° and RZC VORTAC R-150 to WESTY INT/RZC 18 DME and hold.

AWOS-3 124.675	RAZORBACK APP CON* 126.6 305.2	SPRINGDALE TOWER* 118.2 (CTAF) 0	GND CON 121.6	REIL 18, 36 122.8 0	UNICOM 122.95
--------------------------	--	--	-------------------------	-------------------------------	-------------------------



ELEV 1353	TDZE 1351
-----------	-----------



CATEGORY	A	B	C	D
S-ILS 18		1605- $\frac{3}{4}$	254 (300- $\frac{3}{4}$)	
S-LOC 18	1960- $\frac{3}{4}$	609 (700- $\frac{3}{4}$)	1960-1 $\frac{1}{2}$	609 (700-1 $\frac{1}{2}$)
CIRCLING	1960-1 607 (700-1)	2000-1 647 (700-1)	2020-1 $\frac{1}{4}$ 667 (700- $\frac{1}{4}$)	2220-2 $\frac{3}{4}$ 867 (900-2 $\frac{3}{4}$)

REIL Rwy 18, 36	0
HIRL Rwy 18-36	0
FAF to MAP 4.5 NM	
Knots	60 90 120 150 180
Min:Sec	4:30 3:00 2:15 1:48 1:30

SC-1, 22 FEB 2024 to 21 MAR 2024

SC-1, 22 FEB 2024 to 21 MAR 2024

WAAS Ch 70312 W18A	APP CRS 183°	Rwy Idg 4939 TDZE 1351 Apt Elev 1353
--	------------------------	---

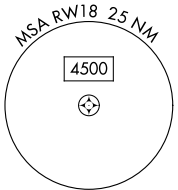
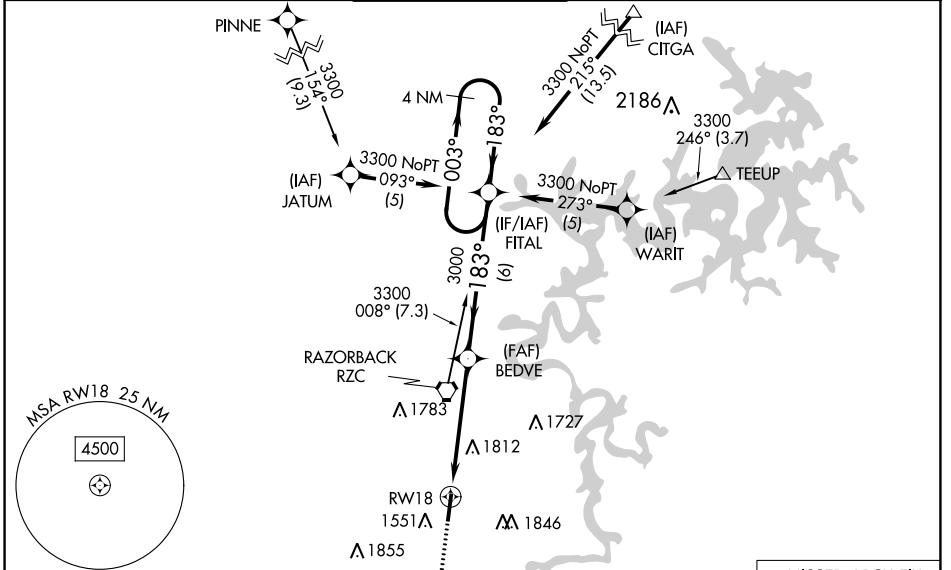
RNAV (GPS) RWY 18

SPRINGDALE MUNI (ASG)

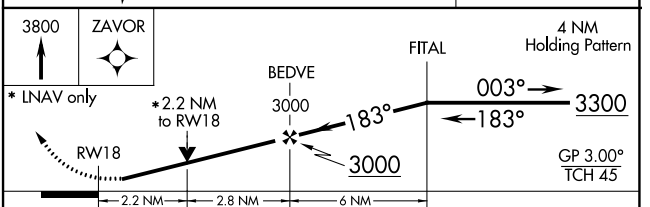
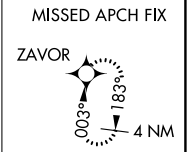
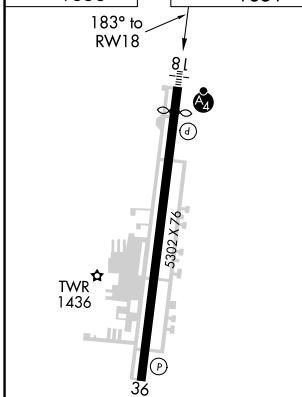
NA DME/DME RNP-0.3 NA. Circling NA east of Rwy 18-36. When local altimeter setting not received, use Fayetteville/Drake Fld altimeter setting and increase all DA 39 feet and all MDA 40 feet; increase LPV all Cats and LNAV Cat C/D visibility $\frac{1}{8}$ mile, Circling Cat C/D visibility $\frac{1}{4}$ mile. For inoperative MALSf, increase LPV all Cats visibility to 1 mile, LNAV Cat C/D visibility to 2 miles. For inoperative MALSf when using Fayetteville/Drake Fld altimeter setting, increase LPV all Cats visibility to $1\frac{1}{8}$ mile, LNAV Cat C visibility to $2\frac{1}{4}$ mile. VDP NA when using Fayetteville/Drake Fld altimeter setting. Helicopter visibility reduction below $\frac{3}{4}$ SM NA.

MALSf
 MISSED APPROACH: Climb to 3800 direct ZAVOR and hold.

AWOS-3 124.675	RAZORBACK APP CON * 126.6 305.2	SPRINGDALE TOWER * 118.2 (CTAF)	GND CON 121.6	REIL 18, 36 122.8	UNICOM 122.95
--------------------------	---	---	-------------------------	-----------------------------	-------------------------



ELEV 1353	TDZE 1351
------------------	------------------



CATEGORY	A	B	C	D
LPV DA		1642- $\frac{3}{4}$ 291 (300- $\frac{3}{4}$)		
LNAV/VNAV DA	NA			
LNAV MDA	2080- $\frac{3}{4}$ 729 (800- $\frac{3}{4}$)	2080-1 729 (800-1)	2080-1 $\frac{7}{8}$ 729 (800-1 $\frac{7}{8}$)	2220-2 $\frac{3}{4}$ 867 (900-2 $\frac{3}{4}$)
C CIRCLING	2080-1 727 (800-1)		2080-2 727 (800-2)	

REIL Rwy 18, 36 **U**
HIRL Rwy 18-36 **U**

SC-1, 22 FEB 2024 to 21 MAR 2024

SC-1, 22 FEB 2024 to 21 MAR 2024

WAAS Ch 77512 W36A	APP CRS 003°	Rwy Idg 5302 TDZE 1353 Apt Elev 1353
--	------------------------	---

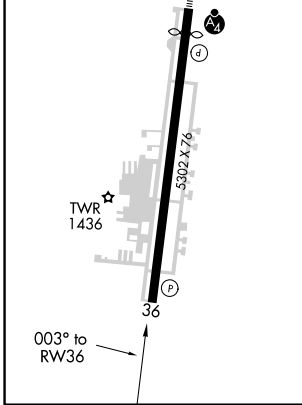
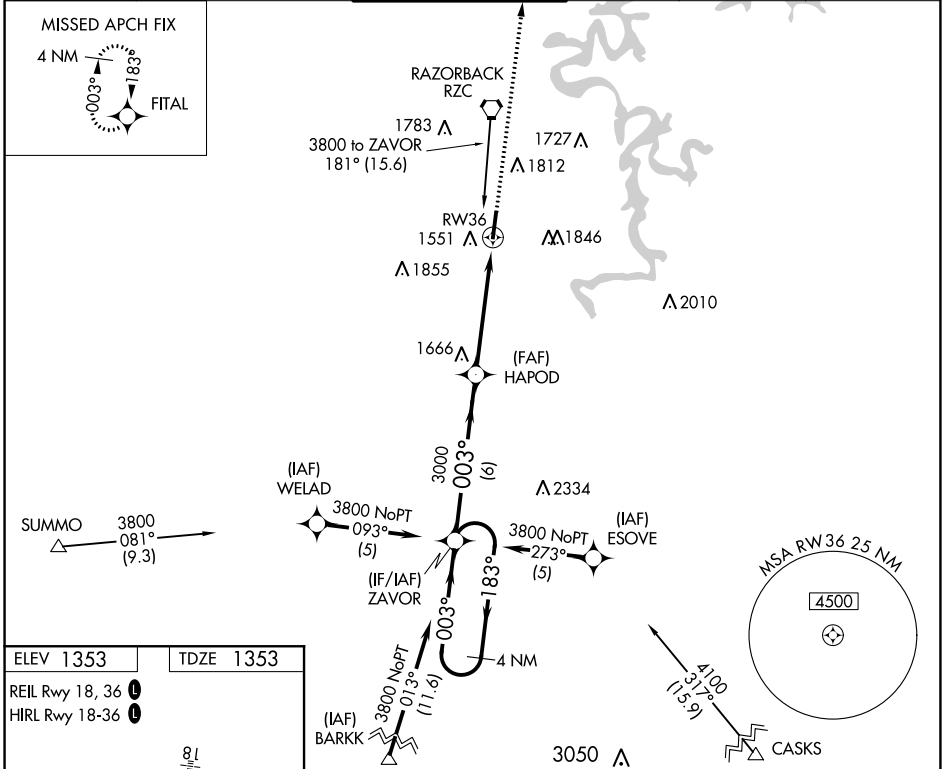
RNAV (GPS) RWY 36

SPRINGDALE MUNI (ASG)

⚠ DME/DME RNP-0.3 NA. Circling NA east of Rwy 18-36. When local altimeter setting not received, use Fayetteville/Drake Fld altimeter setting and increase all DA 39 feet and all MDA 40 feet; increase visibility LNAV Cat C/D 1/8 mile and Circling Cat C/D 1/4 mile. Helicopter visibility reduction below 3/4 SM NA.

⚠ MISSED APPROACH: Climb to 3300 direct FITAL and hold.

AWOS-3 124.675	RAZORBACK APP CON* 126.6 305.2	SPRINGDALE TOWER* 118.2 (CTAF) 0	GND CON 121.6	REIL 18, 36 122.8 0	UNICOM 122.95
--------------------------	--	--	-------------------------	-------------------------------	-------------------------



4 NM Holding Pattern	VGSi and RNAV glidepath not coincident (VGSi Angle 3.00/TCH 40).			3300	FITAL
ZAVOR		HAPOD		RWY 36	
3800	← 183°	003° →	003°	3000	
GP 3.00°		TCH 45			
		6 NM	5 NM		
CATEGORY	A	B	C	D	
LPV DA	1603-1 250 (300-1)				
LNAV MDA	1960-1	607 (700-1)	1960-1 ³ / ₄	607 (700-1 ³ / ₄)	
C CIRCLING	1960-1	2000-1	2020-1 ³ / ₄	2220-2 ³ / ₄	
	607 (700-1)	647 (700-1)	667 (700-1 ³ / ₄)	867 (900-2 ³ / ₄)	

SC-1, 22 FEB 2024 to 21 MAR 2024

SC-1, 22 FEB 2024 to 21 MAR 2024