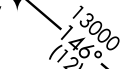


BBABE TRANSITION (BBABE.CHPPR1): For KHSV departures or assigned by ATC only.  
LEMKE TRANSITION (LEMKE.CHPPR1): For KCHA departures or assigned by ATC only.  
MTHEW TRANSITION (MTHEW.CHPPR1)  
RUTTH TRANSITION (RUTTH.CHPPR1)

(CHPPR.CHPPR1) 17285  
 AL-26 (FAA)  
 HARTSFIELD-JACKSON ATLANTA INTL (ATL)  
 ATLANTA, GEORGIA

ATLANTA, GEORGIA  
 HARTSFIELD-JACKSON ATLANTA INTL (ATL)  
 (CHPPR.CHPPR1) 120CT17

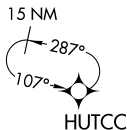
D-ATIS ARR  
 119.65  
 ATLANTA APP CON  
 128.0 379.9



Landing east:  
 Expect 250K

See following page  
 for Arrival Routes.

- NOTE: RADAR required.
- NOTE: RNAV 1.
- NOTE: DME/DME/IRU or GPS required.
- NOTE: Turbojet aircraft only.
- NOTE: Landing east select Rwy 8L, landing west select Rwy 26R.
- NOTE: Landing Rwy 9R: Select DFINS approach transition.
- NOTE: Landing Rwy 9L: Select AAKAY approach transition.



(CONTINUED ON FOLLOWING PAGES)

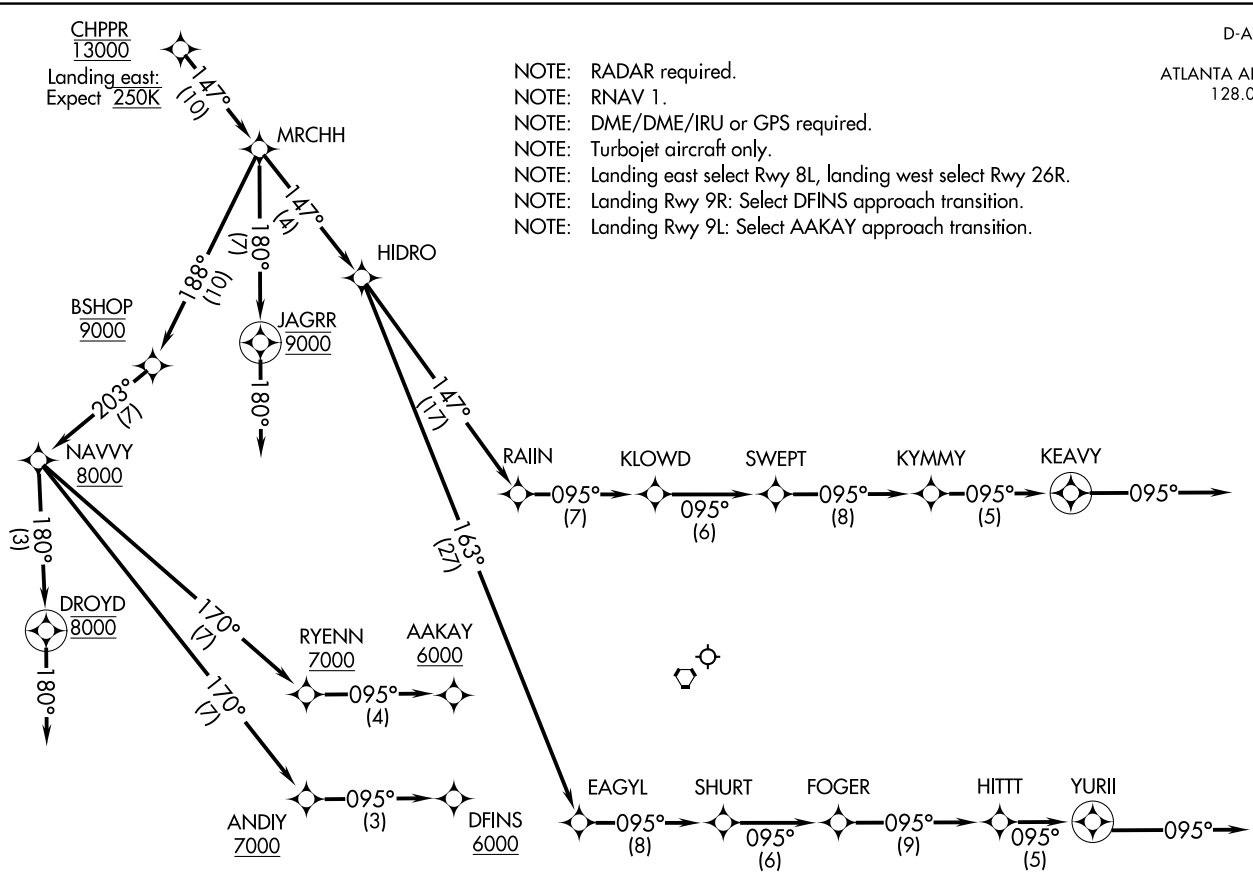
NOTE: Chart not to scale.

D-ATIS ARR  
119.65  
ATLANTA APP CON  
128.0 379.9

- NOTE: RADAR required.
- NOTE: RNAV 1.
- NOTE: DME/DME/IRU or GPS required.
- NOTE: Turbojet aircraft only.
- NOTE: Landing east select Rwy 8L, landing west select Rwy 26R.
- NOTE: Landing Rwy 9R: Select DFINS approach transition.
- NOTE: Landing Rwy 9L: Select AAKAY approach transition.

(CHPPR.CHPPR1) 19283  
 AL-26 (FAA)  
 HARTSFIELD-JACKSON ATLANTA INTL (ATL)  
 ATLANTA, GEORGIA

CHPPR ONE ARRIVAL (RNAV) Arrival Routes  
 (CHPPR.CHPPR1) 120CT17  
 ATLANTA, GEORGIA  
 HARTSFIELD-JACKSON ATLANTA INTL (ATL)



(NARRATIVE ON FOLLOWING PAGE)

NOTE: Chart not to scale.

ARRIVAL ROUTE DESCRIPTION

From CHPPR on track 147° to MRCHH.

LANDING RWYS 26L/R: From MRCHH on track 147° to HIDRO, then on track 147° to RAIIN, then on track 095° to KLOWD, then on track 095° to SWEPT, then on track 095° to KYMMY, then on track 095° to KEAVY, then on track 095°. Expect RADAR vectors to final approach course.

LANDING RWYS 27L/R, 28: From MRCHH on track 147° to HIDRO, then on track 163° to EAGYL, then on track 095° to SHURT, then on track 095° to FOGER, then on track 095° to HITTT, then on track 095° to YURII, then on track 095°. Expect RADAR vectors to final approach course.

LANDING RWYS 8L/R: From MRCHH on track 180° to cross JAGRR at 9000, then on track 180°. Expect RADAR vectors to final approach course.

LANDING RWY 9L: From MRCHH on track 188° to cross BSHOP at 9000, then on track 203° to cross NAVVY at or above 8000, then on track 170° to cross RYENN at or above 7000, then on track 095° to cross AAKAY at or above 6000. Expect ILS Rwy 9L approach.

LANDING RWY 9R: From MRCHH on track 188° to cross BSHOP at 9000, then on track 203° to cross NAVVY at or above 8000, then on track 170° to cross ANDIY at or above 7000, then on track 095° to cross DFINS at or above 6000. Expect ILS Rwy 9R approach.

LANDING RWY 10: From MRCHH on track 188° to cross BSHOP at 9000, then on track 203° to cross NAVVY at or above 8000, then on track 180° to cross DROYD at 8000, then on track 180°. Expect RADAR vectors to final approach course.

LOST COMMUNICATIONS

LANDING WEST: ASSIGNED RWY 26R OR RWY NOT ASSIGNED: Cross CHPPR at 13000; cross RAIIN at 12000; cross SWEPT at or above 7000; cross KEAVY at 5000; after KEAVY turn right direct ZELOW and proceed on the ILS or RNAV Rwy 26R approach.

LANDING WEST: ASSIGNED RWY 26L: Cross CHPPR at 13000; cross RAIIN at 12000; cross SWEPT at or above 7000; cross KEAVY at 5000; after KEAVY turn right direct JIRRI and proceed on the ILS or RNAV Rwy 26L approach.

LANDING WEST: ASSIGNED RWY 27L: Cross CHPPR at 13000; cross EAGYL at 12000; cross FOGER at or above 7000; cross YURII at 4000; after YURII turn left direct SLVAA and proceed on the ILS or RNAV Rwy 27L approach.

LANDING WEST: ASSIGNED RWY 27R: Cross CHPPR at 13000; cross EAGYL at 12000; cross FOGER at or above 7000; cross YURII at 4000; after YURII turn left direct YOUUY and proceed on the ILS or RNAV Rwy 27R approach.

LANDING WEST: ASSIGNED RWY 28: Cross CHPPR at 13000; cross EAGYL at 12000; cross FOGER at or above 7000; cross YURII at 4000; after YURII turn left direct PRMAN and proceed on the ILS or RNAV Rwy 28 approach.

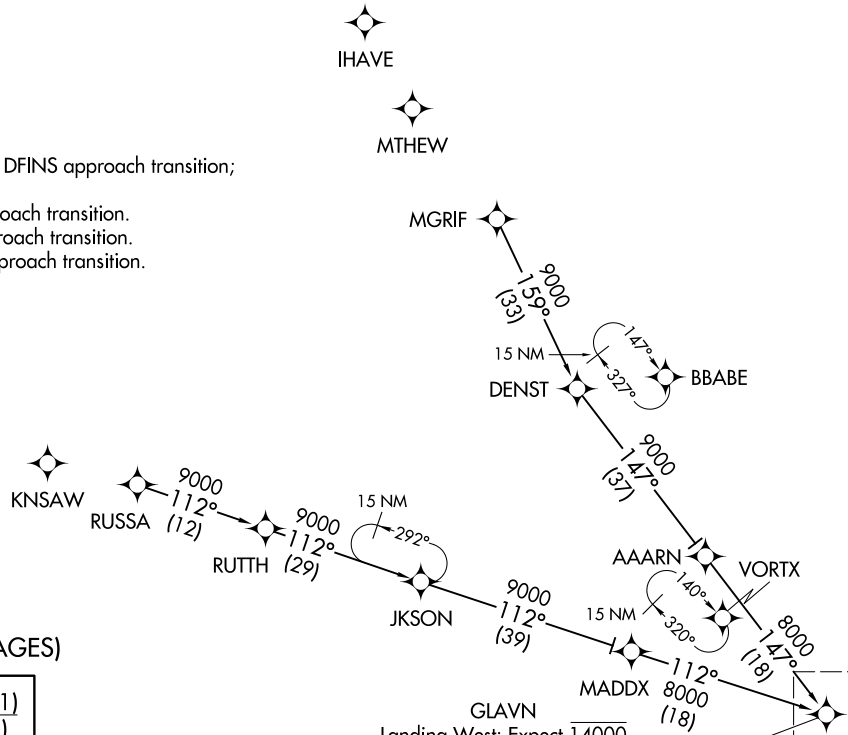
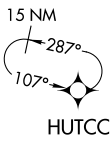
LANDING EAST: ASSIGNED RWY 8L OR RWY NOT ASSIGNED: Cross CHPPR at 13000; cross JAGRR at 9000; after JAGRR descend to 6000 and proceed direct LARII; proceed on the ILS or RNAV Rwy 8L approach.

LANDING EAST: ASSIGNED RWY 8R: Cross CHPPR at 13000; cross JAGRR at 9000; after JAGRR descend to 6000 and proceed direct GPEAT; proceed on the ILS or RNAV Rwy 8R approach.

LANDING EAST: ASSIGNED RWY 10: Cross CHPPR at 13000; cross BSHOP at 9000; cross NAVVY at or above 8000; cross DROYD at 8000; after DROYD descend to 6000 and proceed direct DEWHY; proceed on the ILS or RNAV Rwy 10 approach.

D-ATIS ARR  
 119.65  
 ATLANTA APP CON  
 128.0 379.9

- NOTE: RADAR required.
- NOTE: RNAV 1.
- NOTE: DME/DME/IRU or GPS required.
- NOTE: Turbojet aircraft only.
- NOTE: Landing East: Select Rwy 9R, select DFINS approach transition;  
 Landing West: Select Rwy 26R.
- NOTE: Landing Rwy 8L: Select JAAJJ approach transition.
- NOTE: Landing Rwy 8R: Select PEARL approach transition.
- NOTE: Landing Rwy 9L: Select AAKAY approach transition.



(CONTINUED ON FOLLOWING PAGES)

- JKSON TRANSITION (JKSON.GLAVN1)
- MGRIF TRANSITION (MGRIF.GLAVN1)
- RUSSA TRANSITION (RUSSA.GLAVN1)

NOTE: Chart not to scale.

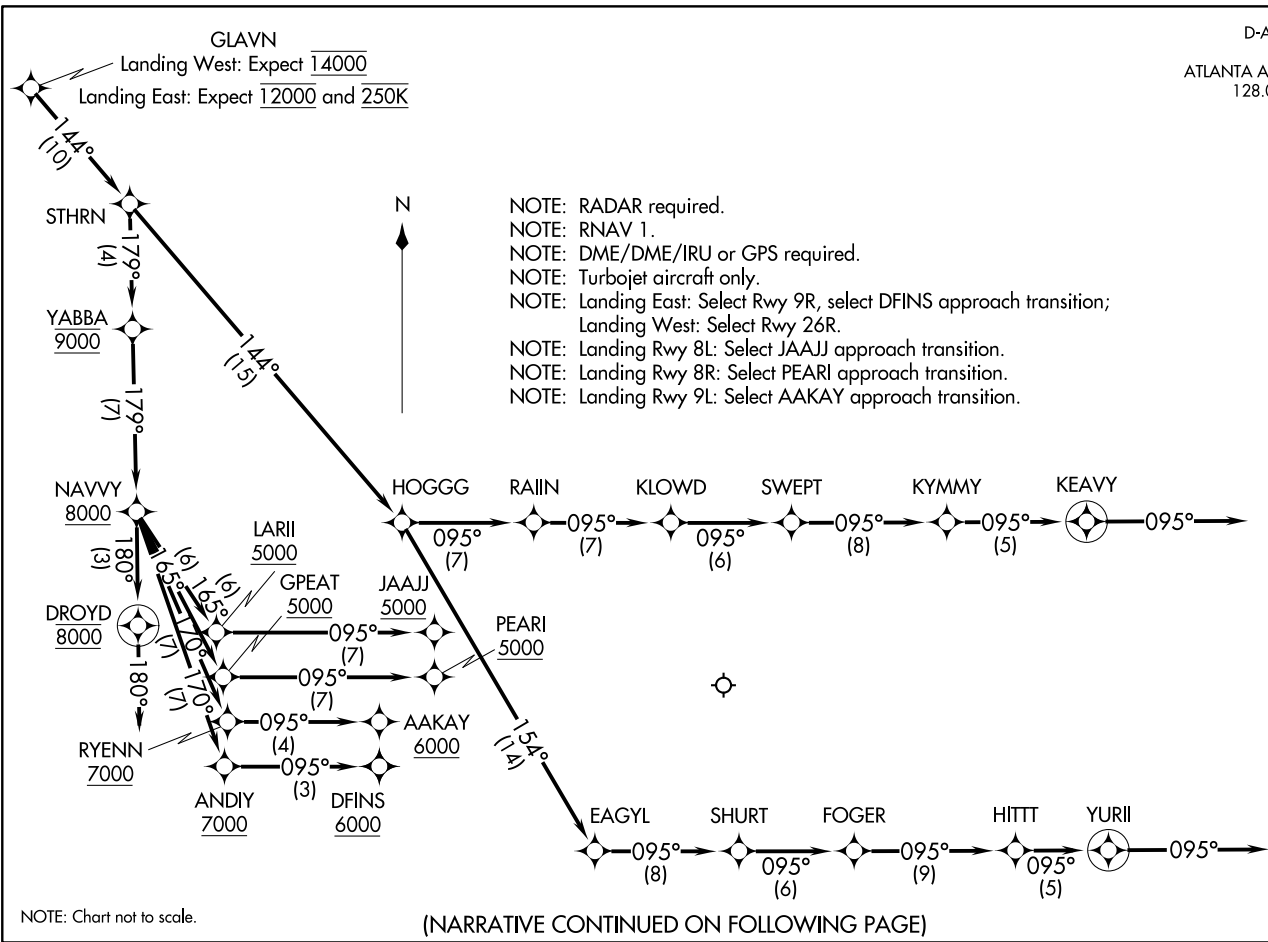
GLAVN  
 Landing West: Expect 14000  
 Landing East: Expect 12000 and 250K

See following page for Arrival Routes.

D-ATIS ARR  
119.65  
ATLANTA APP CON  
128.0 379.9

(GLAVN, GLAVN1) 17285 AL-26 (FAA) HARTSFIELD-JACKSON ATLANTA INTL (ATTL)  
ATLANTA, GEORGIA  
GLAVN ONE ARRIVAL (RNAV) Arrival Routes

GLAVN ONE ARRIVAL (RNAV) Arrival Routes  
(GLAVN, GLAVN1) 120CT17 HARTSFIELD-JACKSON ATLANTA INTL (ATTL)  
ATLANTA, GEORGIA



ARRIVAL ROUTE DESCRIPTION

From GLAVN on track 144° to STHRN.

LANDING RWYS 26L/R: From STHRN on track 144° to HOGGG, then on track 095° to RAIIN, then on track 095° to KLOWD, then on track 095° to SWEPT, then on track 095° to KYMMY, then on track 095° to KEAVY, then on track 095°. Expect RADAR vectors to final approach course.

LANDING RWYS 27L/R, 28: From STHRN on track 144° to HOGGG, then on track 154° to EAGYL, then on track 095° to SHURT, then on track 095° to FOGER, then on track 095° to HITT, then on track 095° to YURII, then on track 095°. Expect RADAR vectors to final approach course.

LANDING RWY 8L: From STHRN on track 179° to cross YABBA at 9000, then on track 179° to cross NAVVY at or above 8000, then on track 165° to cross LARII at or above 5000, then on track 095° to cross JAAJ at or above 5000. Expect ILS Rwy 8L approach.

LANDING RWY 8R: From STHRN on track 179° to cross YABBA at 9000, then on track 179° to cross NAVVY at or above 8000, then on track 165° to cross GPEAT at or above 5000, then on track 095° to cross PEARL at or above 5000. Expect ILS Rwy 8R approach.

LANDING RWY 9L: From STHRN on track 179° to cross YABBA at 9000, then on track 179° to cross NAVVY at or above 8000, then on track 170° to cross RYENN at or above 7000, then on track 095° to cross AAKAY at or above 6000. Expect ILS Rwy 9L approach.

LANDING RWY 9R: From STHRN on track 179° to cross YABBA at 9000, then on track 179° to cross NAVVY at or above 8000, then on track 170° to cross ANDIY at or above 7000, then on track 095° to cross DFINS at or above 6000. Expect ILS Rwy 9R approach.

LANDING RWY 10: From STHRN on track 179° to cross YABBA at 9000, then on track 179° to cross NAVVY at or above 8000, then on track 180° to cross DROYD at 8000, then on track 180°. Expect RADAR vectors to final approach course.

LOST COMMUNICATIONS

LANDING WEST: ASSIGNED RWY 26R OR RWY NOT ASSIGNED: Cross GLAVN at 14000; cross RAIIN at 12000; cross SWEPT at or above 7000; cross KEAVY at 5000; after KEAVY turn right direct ZELow and proceed on the ILS or RNAV Rwy 26R approach.

LANDING WEST: ASSIGNED RWY 26L: Cross GLAVN at 14000; cross RAIIN at 12000; cross SWEPT at or above 7000; cross KEAVY at 5000; after KEAVY turn right direct JIRRI and proceed on the ILS or RNAV Rwy 26L approach.

LANDING WEST: ASSIGNED RWY 27L: Cross GLAVN at 14000; cross EAGYL at 12000; cross FOGER at or above 7000; cross YURII at 4000; after YURII turn left direct SLVAA and proceed on the ILS or RNAV Rwy 27L approach.

LANDING WEST: ASSIGNED RWY 27R: Cross GLAVN at 14000; cross EAGYL at 12000; cross FOGER at or above 7000; cross YURII at 4000; after YURII turn left direct YOUYU and proceed on the ILS or RNAV Rwy 27R approach.

LANDING WEST: ASSIGNED RWY 28: Cross GLAVN at 14000; cross EAGYL at 12000; cross FOGER at or above 7000; cross YURII at 4000; after YURII turn left direct PRMAN and proceed on the ILS or RNAV Rwy 28 approach.

LANDING EAST: ASSIGNED RWY 10: Cross GLAVN at 14000; cross YABBA at 9000; cross NAVVY at or above 8000; cross DROYD at 8000; after DROYD descend to 6000 and proceed direct DEWHY; proceed on the ILS or RNAV Rwy 10 approach.

SE-4, 22 FEB 2024 to 21 MAR 2024

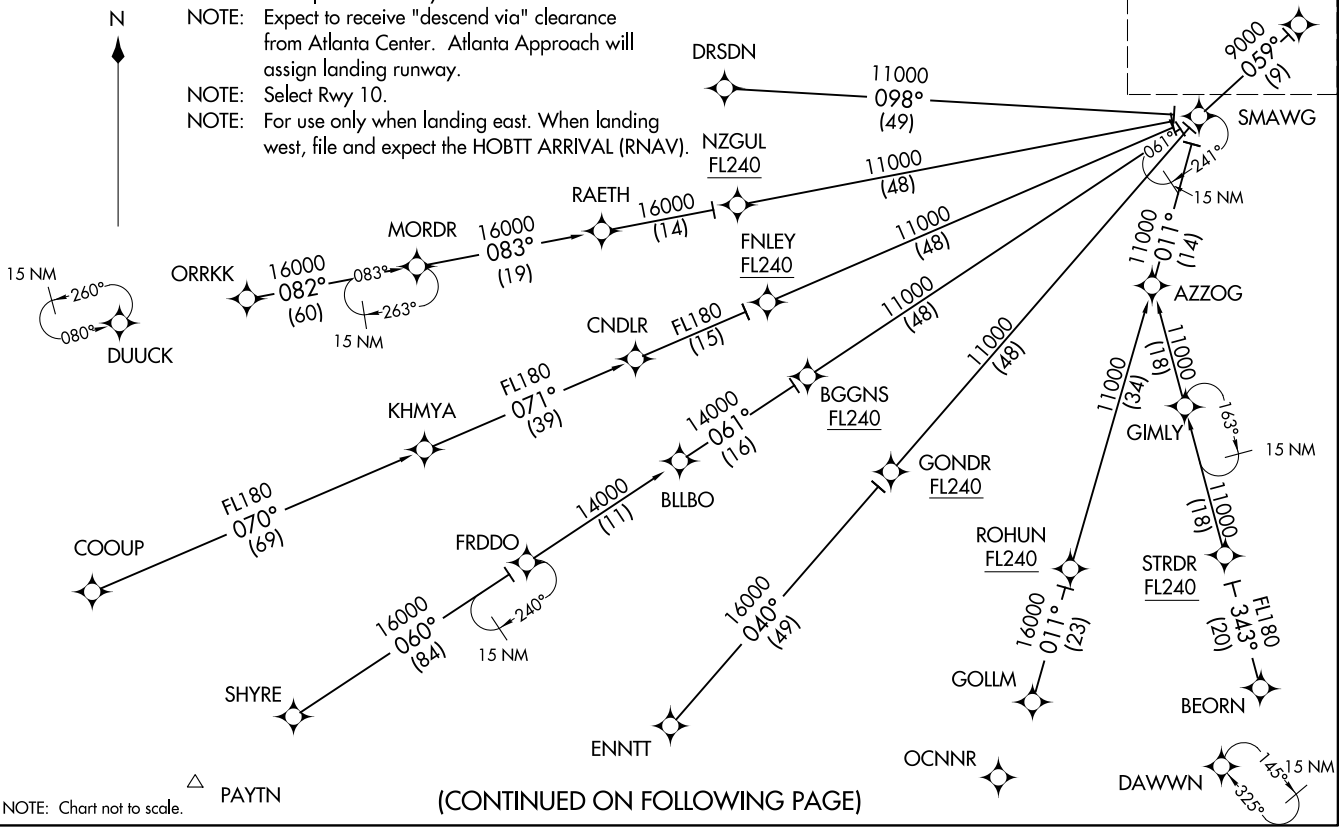
SE-4, 22 FEB 2024 to 21 MAR 2024

GNDLF TWO ARRIVAL (RNAV) Transition Routes  
HARTSFIELD-JACKSON ATLANTA INTL (ATL)  
ATLANTA, GEORGIA  
GNDLF:GNDLF2) 01FEB18

D-ATIS ARR  
119.65  
ATLANTA APP CON  
127.9 379.9

- NOTE: RADAR required.
- NOTE: RNAV 1.
- NOTE: DME/DME/IRU or GPS required.
- NOTE: Turbojet aircraft only.
- NOTE: Expect to receive "descend via" clearance from Atlanta Center. Atlanta Approach will assign landing runway.
- NOTE: Select Rwy 10.
- NOTE: For use only when landing east. When landing west, file and expect the HOBTT ARRIVAL (RNAV).

See following page for Arrival Routes. GNDLF  
11000 250K



(CONTINUED ON FOLLOWING PAGE)

(GNDLF:GNDLF2) 18032  
AL-26 (FAA) HARTSFIELD-JACKSON ATLANTA INTL (ATL)  
ATLANTA, GEORGIA  
GNDLF TWO ARRIVAL (RNAV) Transition Routes

(GNDLF.GNDLF2) 01FEB18  
**GNDLF TWO ARRIVAL (RNAV) Arrival Routes**  
 ATLANTA, GEORGIA  
 HARTSFIELD-JACKSON ATLANTA INTL (ATL)

### ARRIVAL ROUTE DESCRIPTION

BEORN TRANSITION (BEORN.GNDLF2):  
COOUP TRANSITION (COOUP.GNDLF2): Assigned by ATC only.  
DRSDN TRANSITION (DRSDN.GNDLF2):  
ENNTT TRANSITION (ENNTT.GNDLF2):  
FRDDO TRANSITION (FRDDO.GNDLF2):  
GOLLM TRANSITION (GOLLM.GNDLF2):  
KHMYA TRANSITION (KHMYA.GNDLF2): Assigned by ATC only.  
ORRKK TRANSITION (ORRKK.GNDLF2):  
SHYRE TRANSITION (SHYRE.GNDLF2):  
STRDR TRANSITION (STRDR.GNDLF2):

From GNDLF on track 059° to cross HALRR at or above 10000 and at 250K, then on track 059° to cross SHULR at 8000, then on track 036° to JNGLE, then on track 005° to QUBIT, then on track 005°. Expect RADAR vectors to final approach course.

#### LOST COMMUNICATIONS:

ASSIGNED RWY 10 or NOT ASSIGNED: Cross HALRR at or above 10000; cross SHULR at 8000; cross QUBIT at 5000; after QUBIT descend to 3000 and proceed direct DEWHY; proceed on the ILS or RNAV Rwy 10 approach.

ASSIGNED RWY 9L: Cross HALRR at or above 10000; cross SHULR at 8000; cross QUBIT at 6000; after QUBIT proceed direct RYENN and proceed on the ILS or RNAV Rwy 9L approach.

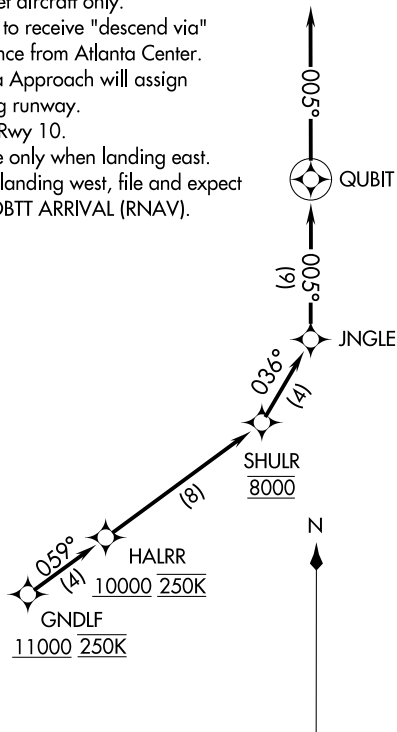
ASSIGNED RWY 9R: Cross HALRR at or above 10000; cross SHULR at 8000; cross QUBIT at 6000; after QUBIT proceed direct ANDIY and proceed on the ILS or RNAV Rwy 9R approach.

ASSIGNED RWY 8L: Cross HALRR at or above 10000; cross SHULR at 8000; cross QUBIT at 6000; after QUBIT proceed direct LARII and proceed on the ILS or RNAV Rwy 8L approach.

ASSIGNED RWY 8R: Cross HALRR at or above 10000; cross SHULR at 8000; cross QUBIT at 6000; after QUBIT proceed direct GPEAT and proceed on the ILS or RNAV Rwy 8R approach.

NOTE: RADAR required.  
 NOTE: RNAV 1.  
 NOTE: DME/DME/IRU or GPS required.  
 NOTE: Turbojet aircraft only.  
 NOTE: Expect to receive "descend via" clearance from Atlanta Center. Atlanta Approach will assign landing runway.  
 NOTE: Select Rwy 10.  
 NOTE: For use only when landing east. When landing west, file and expect the HOBTT ARRIVAL (RNAV).

D-ATIS ARR  
 119.65  
 ATLANTA APP CON  
 127.9 379.9



NOTE: Chart not to scale.

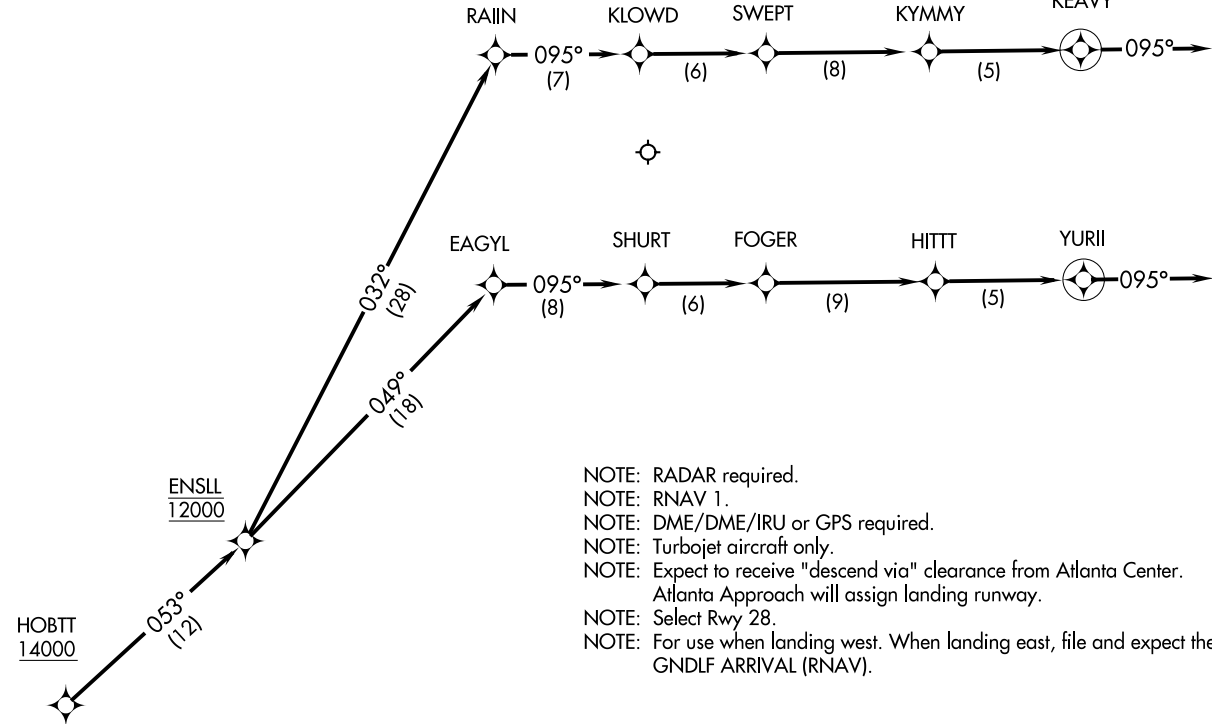
(GNDLF.GNDLF2) 21280  
**GNDLF TWO ARRIVAL (RNAV) Arrival Routes**  
 ATLANTA, GEORGIA  
 ATL-26 (FAA)  
 HARTSFIELD-JACKSON ATLANTA INTL (ATL)





HOBTT TWO ARRIVAL(RNAV) Arrival Routes  
 (HOBTT.HOBTT2) 01FEB18  
 ATLANTA, GEORGIA  
 HARTSFIELD-JACKSON ATLANTA INTL (ATL)

D-ATIS ARR  
 119.65  
 ATLANTA APP CON  
 127.9 379.9



- NOTE: RADAR required.
- NOTE: RNAV 1.
- NOTE: DME/DME/IRU or GPS required.
- NOTE: Turbojet aircraft only.
- NOTE: Expect to receive "descend via" clearance from Atlanta Center. Atlanta Approach will assign landing runway.
- NOTE: Select Rwy 28.
- NOTE: For use when landing west. When landing east, file and expect the GNDLF ARRIVAL (RNAV).

(NARRATIVE ON FOLLOWING PAGE)

NOTE: Chart not to scale.

(HOBTT.HOBTT2) 18032  
 HOBTT TWO ARRIVAL(RNAV) Arrival Routes  
 AL-26 (FAA)  
 HARTSFIELD-JACKSON ATLANTA INTL (ATL)  
 ATLANTA, GEORGIA

ARRIVAL ROUTE DESCRIPTION

BEORN TRANSITION (BEORN.HOBTT2)

COOUP TRANSITION (COOUP.HOBTT2): Assigned by ATC only.

DRSDN TRANSITION (DRSDN.HOBTT2)

ENNTT TRANSITION (ENNTT.HOBTT2)

FRDDO TRANSITION (FRDDO.HOBTT2)

GOLLM TRANSITION (GOLLM.HOBTT2)

KHMYA TRANSITION (KHMYA.HOBTT2): Assigned by ATC only.

ORRKK TRANSITION (ORRKK.HOBTT2)

SHYRE TRANSITION (SHYRE.HOBTT2)

STRDR TRANSITION (STRDR.HOBTT2)

From HOBTT on track 053° to cross ENSLL at 12000.

LANDING RWYS 26L/R: From ENSLL on track 032° to RAIIN, then on track 095° to KLOWD, then on track 095° to SWEPT, then on track 095° to KYMMY, then on track 095° to KEAVY, then on track 095°. Expect RADAR vectors to final approach course.

LANDING RWYS 27L/R, 28: From ENSLL on track 049° to EAGYL, then on track 095° to SHURT, then on track 095° to FOGER, then on track 095° to HITT, then on track 095° to YURII, then on track 095°. Expect RADAR vectors to final approach course.

LOST COMMUNICATIONS:

ASSIGNED RWY 28 OR RWY NOT ASSIGNED: Cross HOBTT at or above 14000; cross ENSLL at 12000; cross EAGYL at 12000; cross FOGER at or above 7000; cross YURII at 4000; after YURII turn left direct PRMAN and proceed on the ILS or RNAV RWY 28 approach.

ASSIGNED RWY 27L: Cross HOBTT at or above 14000; cross ENSLL at 12000; cross EAGYL at 12000; cross FOGER at or above 7000; cross YURII at 4000; after YURII turn left direct SLVAA and proceed on the ILS or RNAV RWY 27L approach.

ASSIGNED RWY 27R: Cross HOBTT at or above 14000; cross ENSLL at 12000; cross EAGYL at 12000; cross FOGER at or above 7000; cross YURII at 4000; after YURII turn left direct YOUYU and proceed on the ILS or RNAV RWY 27R approach.

ASSIGNED RWY 26L: Cross HOBTT at or above 14000; cross ENSLL at 12000; cross RAIIN at 12000; cross SWEPT at or above 7000; cross KEAVY at 5000; after KEAVY turn right direct JIRRI and proceed on the ILS or RNAV RWY 26L approach.

ASSIGNED RWY 26R: Cross HOBTT at or above 14000; cross ENSLL at 12000; cross RAIIN at 12000; cross SWEPT at or above 7000; cross KEAVY at 5000; after KEAVY turn right direct ZELOW and proceed on the ILS or RNAV RWY 26R approach.

RNAV 1 - DME/DME/IRU or GPS.  
RADAR required.

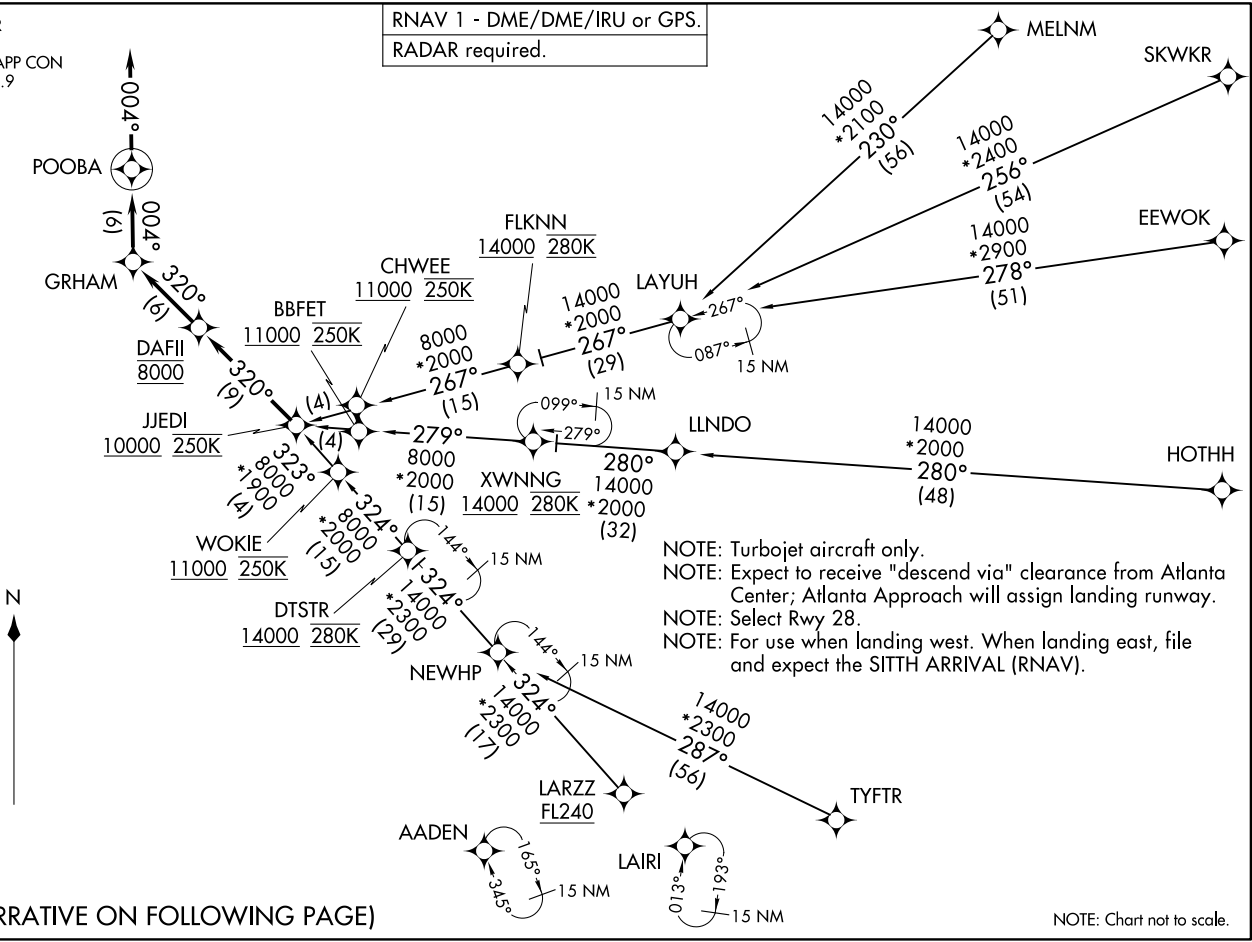
D-ATIS ARR  
119.65  
ATLANTA APP CON  
127.9 379.9

JJEDI THREE ARRIVAL (RNAV)  
(JJEDI, JJEDI3) 08SEP22

HARTSFIELD-JACKSON ATLANTA INTL (ATL)  
ATLANTA, GEORGIA

JJEDI THREE ARRIVAL (RNAV)  
(JJEDI, JJEDI3) 22251

AT-26 (FAA) HARTSFIELD-JACKSON ATLANTA INTL (ATL)  
ATLANTA, GEORGIA



(NARRATIVE ON FOLLOWING PAGE)

NOTE: Chart not to scale.

## ARRIVAL ROUTE DESCRIPTION

EEWOK TRANSITION (EEWOK.JJEDI3)HOTHH TRANSITION (HOTHH.JJEDI3)LARZZ TRANSITION (LARZZ.JJEDI3)LAYUH TRANSITION (LAYUH.JJEDI3)MELNM TRANSITION (MELNM.JJEDI3): Assigned by ATC only.SKWKR TRANSITION (SKWKR.JJEDI3)TYFTR TRANSITION (TYFTR.JJEDI3)

From JJEDI on track 320° to cross DAFII at 8000, then on track 320° to GRHAM, then on track 004° to POOBA, then on track 004°. Expect RADAR vectors to final approach course.

LOST COMMUNICATIONS:

ASSIGNED RUNWAY 28 OR RUNWAY NOT ASSIGNED: Cross JJEDI at or above 10000; cross DAFII at 8000; cross POOBA at 5000; after POOBA descend to 3000 and proceed direct PRMAN; proceed on the ILS or RNAV RWY 28 approach.

ASSIGNED RUNWAY 27L: Cross JJEDI at or above 10000; cross DAFII at 8000; cross POOBA at 6000; after POOBA proceed direct SLVAA and proceed on the ILS or RNAV RWY 27L approach.

ASSIGNED RUNWAY 27R: Cross JJEDI at or above 10000; cross DAFII at 8000; cross POOBA at 6000; after POOBA proceed direct YOUYU and proceed on the ILS or RNAV RWY 27R approach.

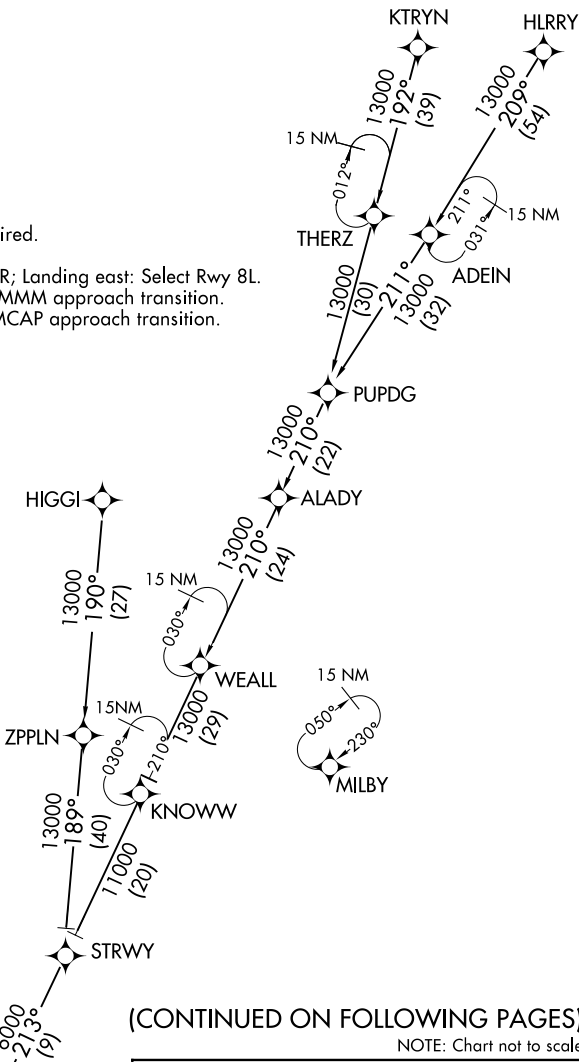
ASSIGNED RUNWAY 26L: Cross JJEDI at or above 10000; cross DAFII at 8000; cross POOBA at 6000; after POOBA proceed direct JIRRI and proceed on the ILS or RNAV RWY 26L approach.

ASSIGNED RUNWAY 26R: Cross JJEDI at or above 10000; cross DAFII at 8000; cross POOBA at 6000; after POOBA proceed direct ZELOW and proceed on the ILS or RNAV RWY 26R approach.

ONDRE ONE ARRIVAL (RNAV) Transition Routes

D-ATIS ARR  
119.65  
ATLANTA APP CON  
128.525 379.9

- NOTE: RADAR required.
- NOTE: RNAV 1.
- NOTE: DME/DME/IRU or GPS required.
- NOTE: Turbojet aircraft only.
- NOTE: Landing west: Select Rwy 26R; Landing east: Select Rwy 8L.
- NOTE: Landing Rwy 27L: Select ROMMM approach transition.
- NOTE: Landing Rwy 27R: Select MMCAP approach transition.



(CONTINUED ON FOLLOWING PAGES)

NOTE: Chart not to scale.

- HIGGI TRANSITION (HIGGI.ONDRE1):
- For TYS departures or assigned by ATC only.
- HLRRY TRANSITION (HLRRY.ONDRE1)
- KTRYN TRANSITION (KTRYN.ONDRE1)
- PUPDG TRANSITION (PUPDG.ONDRE1)
- STRWY TRANSITION (STRWY.ONDRE1)

SE-4, 22 FEB 2024 to 21 MAR 2024

SE-4, 22 FEB 2024 to 21 MAR 2024



ARRIVAL ROUTE DESCRIPTION

From ONDR on track 213° to SMELY.

LANDING RWYS 8L/R: From SMELY on track 215° to GAASS, then on track 275° to KLOWD, then on track 275° to KUNFU, then on track 275° to TRAPE, then on track 275° to SNEVE, then on track 275°. Expect RADAR vectors to final approach course.

LANDING RWYS 9L/R, 10: From SMELY on track 203° to FRYES, then on track 275° to SHURT, then on track 275° to REMAC, then on track 275° to DACTL, then on track 275° to STUMP, then on track 275°. Expect RADAR vectors to final approach course.

LANDING RWYS 26L/R: From SMELY on track 175° to cross VOLTS at 9000, then on track 175°. Expect RADAR vectors to final approach course.

LANDING RWY 27L: From SMELY on track 160° to cross ANVAL at 9000, then on track 160° to cross POSEY at or above 8000, then on track 201° to cross SLVAA at or above 7000, then on track 275° to cross ROMMM at or above 6000. Expect ILS RWY 27L approach.

LANDING RWY 27R: From SMELY on track 160° to cross ANVAL at 9000, then on track 160° to cross POSEY at or above 8000, then on track 198° to cross YOUYU at or above 7000, then on track 275° to cross MMCAP at or above 6000. Expect ILS RWY 27R approach.

LANDING RWY 28: From SMELY on track 160° to cross ANVAL at 9000, then on track 160° to POSEY at or above 8000, then on track 180° to cross BLUFF at 8000, then on track 180. Expect RADAR vectors to final approach course.

LOST COMMUNICATIONS

LANDING EAST: ASSIGNED RWY 8L OR RWY NOT ASSIGNED: Cross ONDR at 13000; cross GAASS at 12000, cross KUNFU at or above 7000; cross SNEVE at 5000; after SNEVE turn left direct LARII and proceed on the ILS or RNAV Rwy 8L approach.

LANDING EAST: ASSIGNED RWY 8R: Cross ONDR at 13000; cross GAASS at 12000; cross KUNFU at or above 7000; cross SNEVE at 5000; after SNEVE turn left direct GPEAT and proceed on the ILS or RNAV Rwy 8R approach.

LANDING EAST: ASSIGNED RWY 9L: Cross ONDR at 13000; cross FRYES at 12000; cross REMAC at or above 7000; cross STUMP at 4000; after STUMP turn right direct RYENN and proceed on the ILS or RNAV Rwy 9L approach.

LANDING EAST: ASSIGNED RWY 9R: Cross ONDR at 13000; cross FRYES at 12000; cross REMAC at or above 7000; cross STUMP at 4000; after STUMP turn right direct ANDIY and proceed on the ILS or RNAV Rwy 9R approach.

LANDING EAST: ASSIGNED RWY 10: Cross ONDR at 13000; cross FRYES at 12000; cross REMAC at or above 7000; cross STUMP at 4000; after STUMP turn right direct DEWHY and proceed on the ILS or RNAV Rwy 10 approach.

LANDING WEST: ASSIGNED RWY 26R OR RWY NOT ASSIGNED: Cross ONDR at 13000; cross VOLTS at 9000; after VOLTS descend to 6000 and proceed direct ZELOW; proceed on the ILS or RNAV Rwy 26R approach.

LANDING WEST: ASSIGNED RWY 26L: Cross ONDR at 13000; cross VOLTS at 9000; after VOLTS descend to 6000 and proceed direct JIRRI; proceed on the ILS or RNAV Rwy 26L approach.

LANDING WEST: ASSIGNED RWY 28: Cross ONDR at 13000; cross ANVAL at 9000; cross POSEY at or above 8000; cross BLUFF at 8000; after BLUFF descend to 6000 and proceed direct PRMAN; proceed on the ILS or RNAV Rwy 28 approach.

SE-4, 22 FEB 2024 to 21 MAR 2024

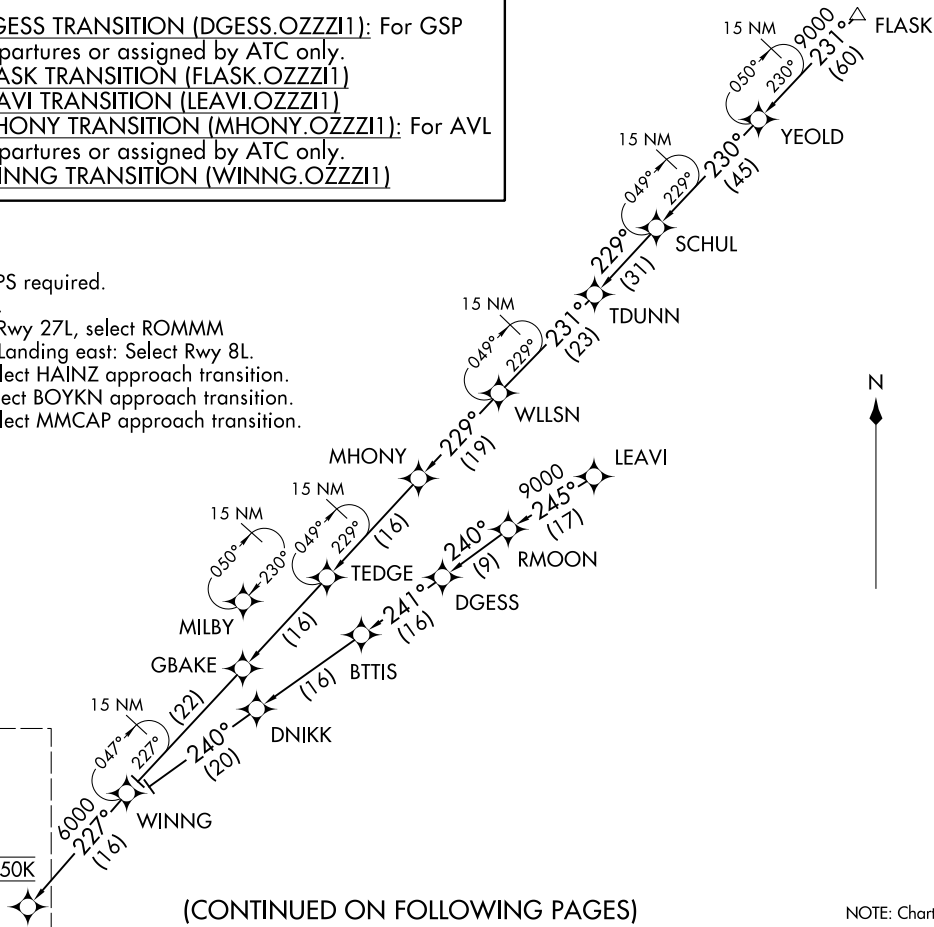
SE-4, 22 FEB 2024 to 21 MAR 2024



D-ATIS ARR  
119.65  
ATLANTA APP CON  
128.525 379.9

**DGESS TRANSITION (DGESS.OZZI1):** For GSP  
departures or assigned by ATC only.  
**FLASK TRANSITION (FLASK.OZZI1)**  
**LEAVI TRANSITION (LEAVI.OZZI1)**  
**MHONY TRANSITION (MHONY.OZZI1):** For AVL  
departures or assigned by ATC only.  
**WINNG TRANSITION (WINNG.OZZI1)**

- NOTE: RADAR required.
- NOTE: RNAV 1.
- NOTE: DME/DME/IRU or GPS required.
- NOTE: Turbojet aircraft only.
- NOTE: Landing west: Select Rwy 27L, select ROMMM approach transition; Landing east: Select Rwy 8L.
- NOTE: Landing Rwy 26R: Select HAINZ approach transition.
- NOTE: Landing Rwy 26L: Select BOYKN approach transition.
- NOTE: Landing Rwy 27R: Select MMCAP approach transition.



See following page  
for Arrival Routes.

OZZI  
Landing East: Expect 14000  
Landing West: Expect 12000 and 250K

(CONTINUED ON FOLLOWING PAGES)

NOTE: Chart not to scale.

OZZI ONE ARRIVAL (RNAV) Transition Routes  
ATLANTA, GEORGIA  
HARTSFIELD-JACKSON ATLANTA INTL (ATL)  
120CT17

OZZI ONE ARRIVAL (RNAV) Transition Routes  
ATLANTA, GEORGIA  
AT-26 (FAA) HARTSFIELD-JACKSON ATLANTA INTL (ATL)  
117285

D-ATIS ARR  
119.65  
ATLANTA APP CON  
128.525 379.9

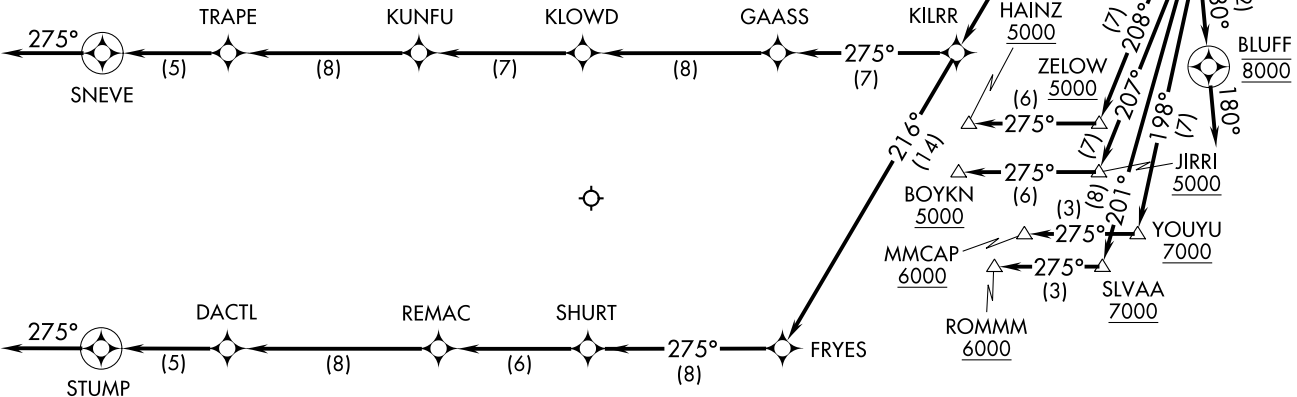
OZZI ONE ARRIVAL (RNAV)  
(OZZI, OZZI1) 120CT17

Arrival Routes

HARTSFIELD-JACKSON ATLANTA INTL (ATL)  
ATLANTA, GEORGIA



- NOTE: RADAR required.
- NOTE: RNAV 1.
- NOTE: DME/DME/IRU or GPS required.
- NOTE: Turbojet aircraft only.
- NOTE: Landing west: Select Rwy 27L, select ROMMM approach transition; Landing east: Select Rwy 8L.
- NOTE: Landing Rwy 26R: Select HAINZ approach transition.
- NOTE: Landing Rwy 26L: Select BOYKN approach transition.
- NOTE: Landing Rwy 27R: Select MMCAP approach transition.



OZZI  
Landing East: Expect 14000  
Landing West: Expect 12000 and 250K

(OZZI, OZZI1) 17285  
OZZI ONE ARRIVAL (RNAV)

Arrival Routes

AT-26 (FAA) HARTSFIELD-JACKSON ATLANTA INTL (ATL)  
ATLANTA, GEORGIA

(NARRATIVE CONTINUED ON FOLLOWING PAGE)

NOTE: Chart not to scale.

# OZZI ONE ARRIVAL (RNAV)

## ARRIVAL DESCRIPTION

From OZZI on track 227° to HAARY.

LANDING RWYS 8L/R: From HAARY on track 216° to KILRR, then on track 275° to GAASS, then on track 275° to KLOWD, then on track 275° to KUNFU, then on track 275° to TRAPE, then on track 275° to SNEVE, then on track 275°. Expect RADAR vectors to final approach course.

LANDING RWYS 9L/R, 10: From HAARY on track 216° to KILRR, then on track 216° to FRYES, then on track 275° to SHURT, then on track 275° to REMAC, then on track 275° to DACTL, then on track 275° to STUMP, then on track 275°. Expect RADAR vectors to final approach course.

LANDING RWY 26L: From HAARY on track 183° to cross CALLA at 9000, then on track 183° to cross POSEY at or above 8000, then on track 207° to cross JIRRI at or above 5000, then on track 275° to cross BOYKN at or above 5000. Expect ILS Rwy 26L approach.

LANDING RWY 26R: From HAARY on track 183° to cross CALLA at 9000, then on track 183° to cross POSEY at or above 8000, then on track 208° to cross ZELOW at or above 5000, then on track 275° to cross HAINZ at or above 5000. Expect ILS Rwy 26R approach.

LANDING RWY 27L: From HAARY on track 183° to cross CALLA at 9000, then on track 183° to cross POSEY at or above 8000, then on track 201° to cross SLVAA at or above 7000, then on track 275° to cross ROMMM at or above 6000. Expect ILS Rwy 27L approach.

LANDING RWY 27R: From HAARY on track 183° to cross CALLA at 9000, then on track 183° to cross POSEY at or above 8000, then on track 198° to cross YOUYU at or above 7000, then on track 275° to cross MMCAP at or above 6000. Expect ILS Rwy 27R approach.

LANDING RWY 28: From HAARY on track 183° to cross CALLA at 9000, then on track 183° to cross POSEY at or above 8000, then on track 180° to cross BLUFF at 8000, then on track 180°. Expect RADAR vectors to final approach course.

### LOST COMMUNICATIONS:

LANDING EAST: ASSIGNED RWY 8L OR Rwy NOT ASSIGNED: Cross OZZI at 14000; cross GAASS at 12000, cross KUNFU at or above 7000; cross SNEVE at 5000; after SNEVE turn left direct LARII and proceed on the ILS or RNAV Rwy 8L approach.

LANDING EAST: ASSIGNED RWY 8R: Cross OZZI at 14000; cross GAASS at 12000; cross KUNFU at or above 7000; cross SNEVE at 5000; after SNEVE turn left direct GPEAT and proceed on the ILS or RNAV Rwy 8R approach.

LANDING EAST: ASSIGNED RWY 9L: Cross OZZI at 14000; cross FRYES at 12000; cross REMAC at or above 7000; cross STUMP at 4000; after STUMP turn right direct RYENN and proceed on the ILS or RNAV Rwy 9L approach.

LANDING EAST: ASSIGNED RWY 9R: Cross OZZI at 14000; cross FRYES at 12000; cross REMAC at or above 7000; cross STUMP at 4000; after STUMP turn right direct ANDIY and proceed on the ILS or RNAV Rwy 9R approach.

LANDING EAST: ASSIGNED RWY 10: Cross OZZI at 14000; cross FRYES at 12000; cross REMAC at or above 7000; cross STUMP at 4000; after STUMP turn right direct DEWHY and proceed on the ILS or RNAV Rwy 10 approach.

LANDING WEST: ASSIGNED RWY 28: Cross OZZI at 14000; cross CALLA at 9000; cross POSEY at or above 8000; cross BLUFF at 8000; after BLUFF descend to 6000 and proceed direct PRMAN; proceed on the ILS or RNAV Rwy 28 approach.

SE-4, 22 FEB 2024 to 21 MAR 2024

SE-4, 22 FEB 2024 to 21 MAR 2024

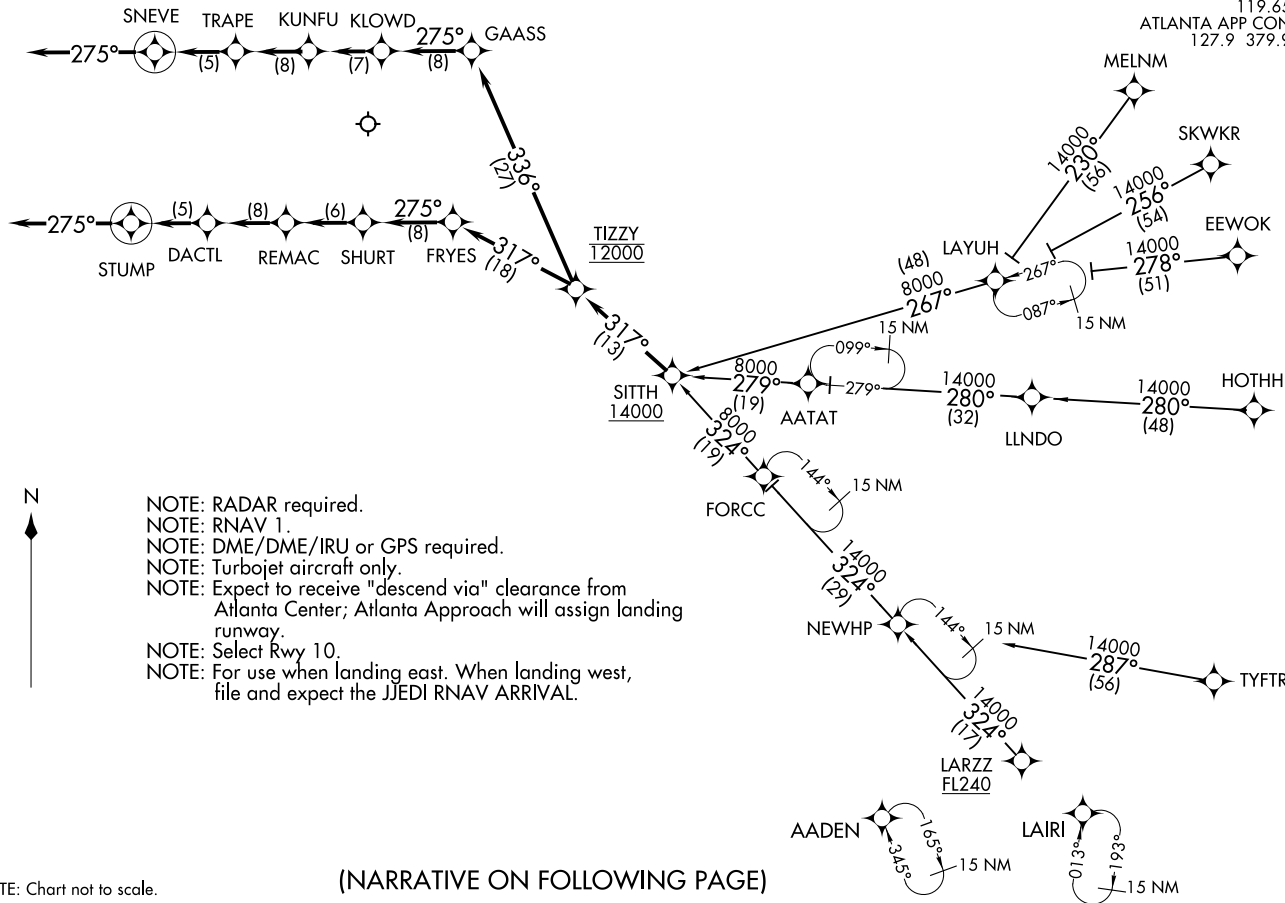
SITTH TWO ARRIVAL(RNAV)  
(SITTH.SITTH2) 01FEB18

HARTSFIELD-JACKSON ATLANTA INTL (ATL)  
ATLANTA, GEORGIA

(SITTH.SITTH2) 18032  
SITTH TWO ARRIVAL(RNAV)

HARTSFIELD-JACKSON ATLANTA INTL (ATL)  
ATLANTA, GEORGIA  
AL-26 (FAA)

D-ATIS ARR 119.65  
ATLANTA APP CON 127.9 379.9



NOTE: Chart not to scale.

(NARRATIVE ON FOLLOWING PAGE)

## ARRIVAL ROUTE DESCRIPTION

EEWOK TRANSITION (EEWOK.SITTH2)HOTHH TRANSITION (HOTHH.SITTH2)LARZZ TRANSITION (LARZZ.SITTH2)LAYUH TRANSITION (LAYUH.SITTH2)MELNM TRANSITION (MELNM.SITTH2): Assigned by ATC only.SKWKR TRANSITION (SKWKR.SITTH2)TYFTR TRANSITION (TYFTR.SITTH2)

From SITTH on track 317° to cross TIZZY at 12000.

LANDING RWYS 8L/R: From TIZZY on track 336° to GAASS, then on track 275° to KLOWD, then on track 275° to KUNFU, then on track 275° to TRAPE, then on track 275° to SNEVE, then on track 275°. Expect RADAR vectors to final approach course.

LANDING RWYS 9L/R, 10: From TIZZY on track 317° to FRYES, then on track 275° to SHURT, then on track 275° to REMAC, then on track 275° to DACTL, then on track 275° to STUMP, then on track 275°. Expect RADAR vectors to final approach course.

LOST COMMUNICATIONS

ASSIGNED RWY 10 OR RWY NOT ASSIGNED: Cross SITTH at or above 14000; cross TIZZY at 12000; cross FRYES at 12000; cross REMAC at or above 7000; cross STUMP at 4000; after STUMP turn right direct DEWHY and proceed on the ILS or RNAV Rwy 10 approach.

ASSIGNED RWY 9L: Cross SITTH at or above 14000; cross TIZZY at 12000; cross FRYES at 12000; cross REMAC at or above 7000; cross STUMP at 4000; after STUMP turn right direct RYENN and proceed on the ILS or RNAV Rwy 9L approach.

ASSIGNED RWY 9R: Cross SITTH at or above 14000; cross TIZZY at 12000; cross FRYES at 12000; cross REMAC at or above 7000; cross STUMP at 4000; after STUMP turn right direct ANDIY and proceed on the ILS or RNAV Rwy 9R approach.

ASSIGNED RWY 8L: Cross SITTH at or above 14000; cross TIZZY at 12000; cross GAASS at 12000, cross KUNFU at or above 7000; cross SNEVE at 5000; after SNEVE turn left direct LARII and proceed on the ILS or RNAV Rwy 8L approach.

ASSIGNED RWY 8R: Cross SITTH at or above 14000; cross TIZZY at 12000; cross GAASS at 12000, cross KUNFU at or above 7000; cross SNEVE at 5000; after SNEVE turn left direct GPEAT and proceed on the ILS or RNAV Rwy 8R approach.