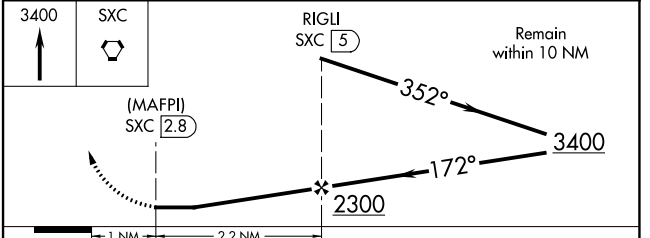
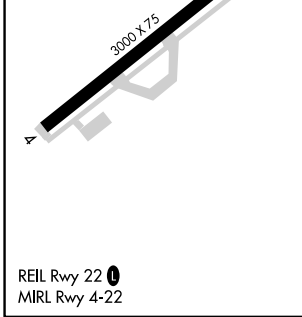
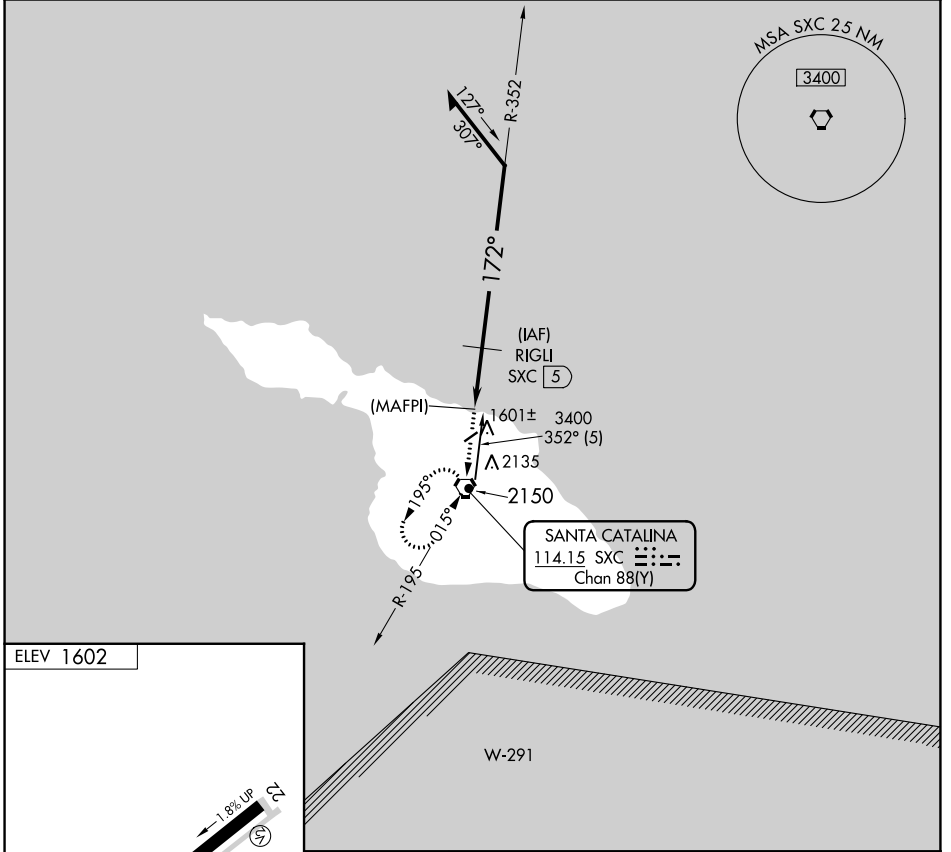


VORTAC SXC <b>114.15</b> Chan <b>88(Y)</b>	APP CRS <b>172°</b>	Rwy Idg TDZE Apt Elev <b>N/A</b> <b>N/A</b> <b>1602</b>
--	------------------------	--

# VOR/DME or GPS-B CATALINA (AVX)

<b>NA</b> Circling southeast runway 4-22 not authorized.	MISSED APPROACH: Climb to 3400 direct SXC VORTAC and hold.
--	--

ASOS <b>120.675</b>	SOCAL APP CON <b>127.4 323.275</b>	UNICOM <b>122.7 (CTAF)</b>
------------------------	---------------------------------------	-------------------------------



CATEGORY	A	B	C	D
CIRCLING	2220-1	618 (700-1)	NA	

SW-3, 22 FEB 2024 to 21 MAR 2024

SW-3, 22 FEB 2024 to 21 MAR 2024

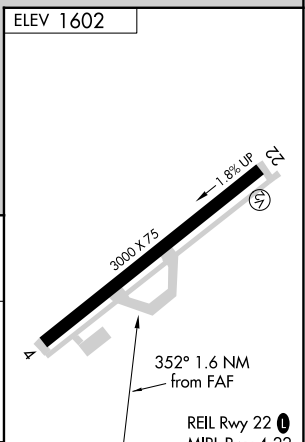
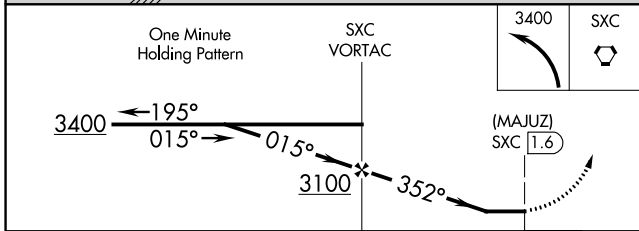
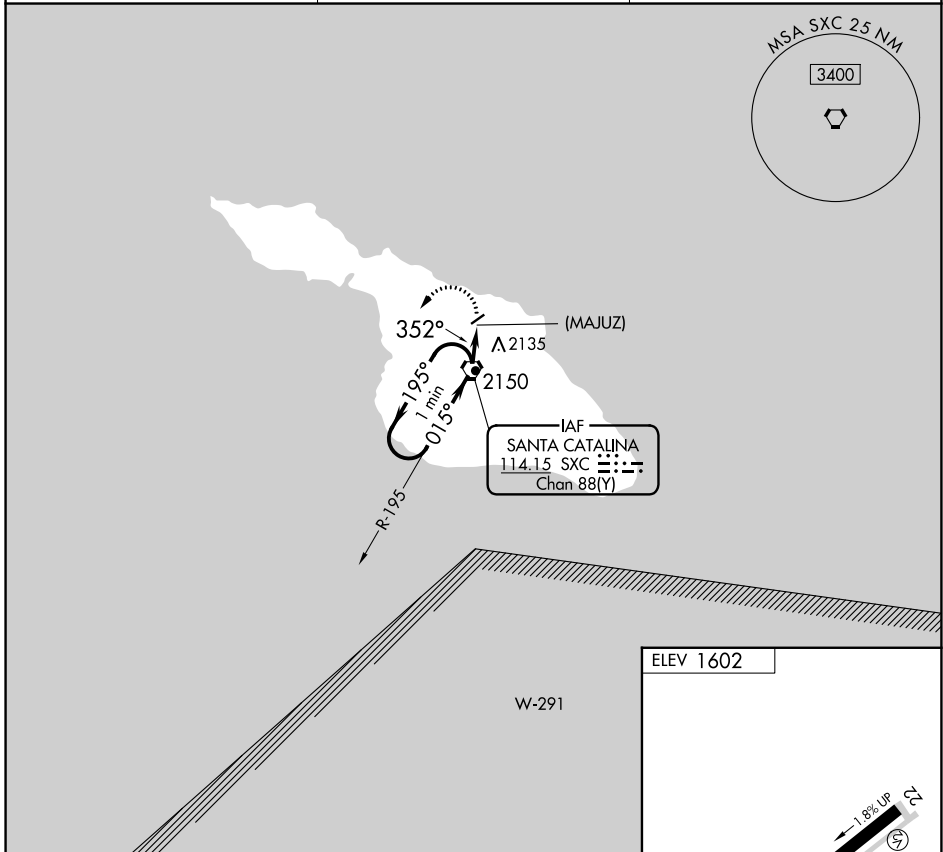
VORTAC SXC <b>114.15</b> Chan <b>88(Y)</b>	APP CRS <b>352°</b>	Rwy Idg TDZE Apt Elev	<b>N/A</b> <b>N/A</b> <b>1602</b>
--	------------------------	-----------------------------	---

# VOR or GPS-A

CATALINA (AVX)

<p>▼</p> <p>▲ NA</p>	<p>MISSED APPROACH: Climbing left turn to 3400 in SXC VORTAC holding pattern.</p>
----------------------	---

<p>ASOS</p> <p><b>120.675</b></p>	<p>SOCAL APP CON</p> <p><b>127.4 323.275</b></p>	<p>UNICOM</p> <p><b>122.7 (CTAF) 0</b></p>
-----------------------------------	--	--



CATEGORY	A	B	C	D	FAF to MAP 1.6 NM					
CIRCLING	2580-1¼ 978 (1000-1¼)	2580-1½ 978 (1000-1½)	NA		Knots	60	90	120	150	180
					Min:Sec	1:36	1:04	0:48	0:38	0:32

SW-3, 22 FEB 2024 to 21 MAR 2024

SW-3, 22 FEB 2024 to 21 MAR 2024