

WAAS CH 86216 W17A	APP CRS 175°	Rwy Idg TDZE 1433 Apt Elev 1433	5501 1433 1433
--	------------------------	---	---

RNAV (GPS) RWY 17

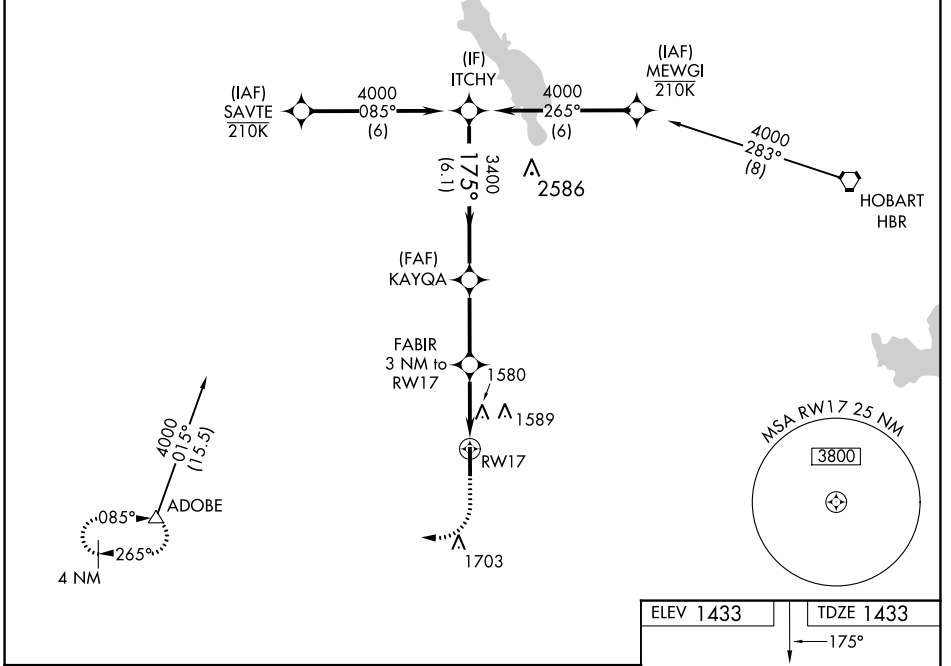
ALTUS/QUARTZ MOUNTAIN RGNL (A.X.S)

⚠ For uncompensated Baro-VNAV systems, LNAV/VNAV NA below -17°C (2°F) or above 54°C (130°F). Baro-VNAV and VDP NA when using Hobart Rgnl altimeter setting. DME/DME RNP-0.3 NA. When local altimeter setting not received, use Hobart Rgnl altimeter setting and increase LPV DA to 1754 feet and LNAV/VNAV DA to 1997 feet and increase all MDA 80 feet. Increase LPV, LNAV/VNAV all Cats and Circling Cat C visibility ¼ mile, increase LNAV Cat C visibility ½ mile.

ODALS

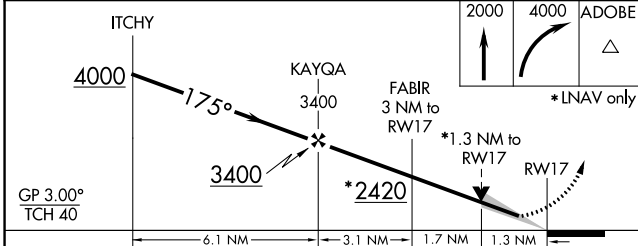
MISSED APPROACH: Climb to 2000 then climbing right turn to 4000 direct ADOBE and hold.

AWOS-3PT 118.825	ALTUS APP CON* 125.1 353.7	UNICOM 122.8 (CTAF) 0
----------------------------	--------------------------------------	---------------------------------



SC-1, 22 FEB 2024 to 21 MAR 2024

SC-1, 22 FEB 2024 to 21 MAR 2024



ELEV 1433	TDZE 1433
-----------	-----------

Vertical profile diagram showing descent from 4000 to 3500 feet, with a 0.3% UP slope. Includes RWY 35 and RWY 17-35.

CATEGORY	A	B	C	D
LPV DA	1683-7/8	250 (300-7/8)		NA
LNAV/VNAV DA	1926-1 3/4	493 (500-1 3/4)		NA
LNAV MDA	1880-1	447 (500-1)	1880-1 3/8 447 (500-1 3/8)	NA
C CIRCLING	1920-1	487 (500-1)	2020-1 1/2 587 (600-1 1/2)	NA

ALTUS, OKLAHOMA

AL-5659 (FAA)

23278

WAAS CH 93914 W35A	APP CRS 355°	Rwy Idg TDZE Apt Elev	5501 1423 1433
--	------------------------	-----------------------------	---

RNAV (GPS) RWY 35

ALTUS/QUARTZ MOUNTAIN RGNL (A.X.S)

RNP APCH.

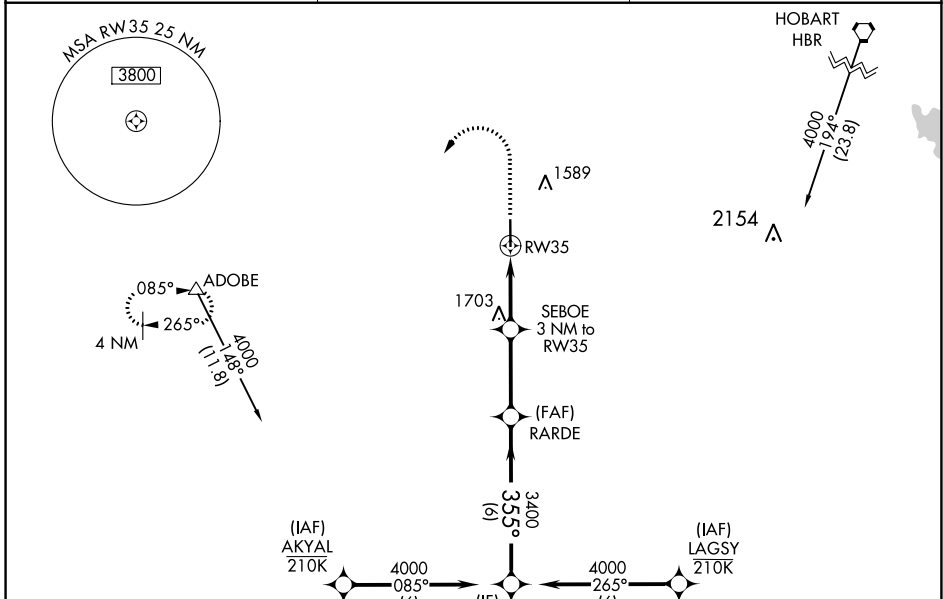
⚠ For uncompensated Baro-VNAV systems, LNAV/VNAV NA below -17°C or above 54°C.

MISSED APPROACH: Climb to 2100 then climbing left turn to 4000 direct ADOBE and hold.

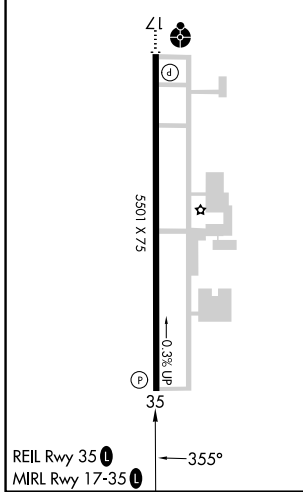
AWOS-3PT
118.825

ALTUS APP CON*
125.1 353.7

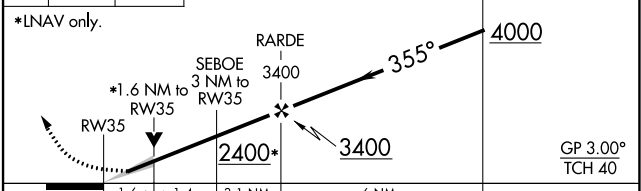
UNICOM
122.8 (CTAF) 0



ELEV 1433 | TDZE 1423



2100 4000 ADOBE
VGSI and RNAV glidepath not coincident (VGSI Angle 3.00/TCH 40).



CATEGORY	A	B	C	D
LPV DA	1673-7/8		250 (300-7/8)	NA
LNAV/VNAV DA	1673-7/8		250 (300-7/8)	NA
LNAV MDA	1960-1	537 (600-1)	1960-1/2 537 (600-1/2)	NA
C CIRCLING	1960-1	527 (600-1)	2020-1/2 587 (600-1/2)	NA

ALTUS, OKLAHOMA
Amdt 1A 16JUL20

34°42'N-99°20'W

ALTUS/QUARTZ MOUNTAIN RGNL (A.X.S) RNAV (GPS) RWY 35

SC-1, 22 FEB 2024 to 21 MAR 2024

SC-1, 22 FEB 2024 to 21 MAR 2024

VORTAC LTS 109.8 Chan 35	APP CRS 122°	Rwy ldg N/A TDZE N/A Apt Elev 1433
--	------------------------	--

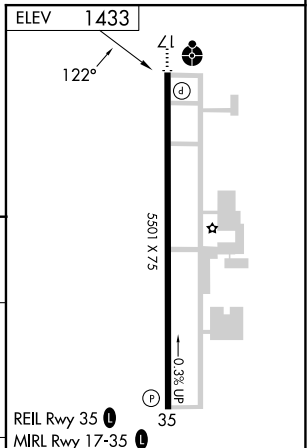
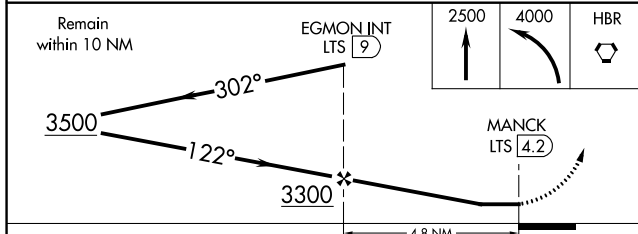
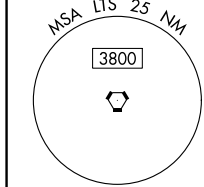
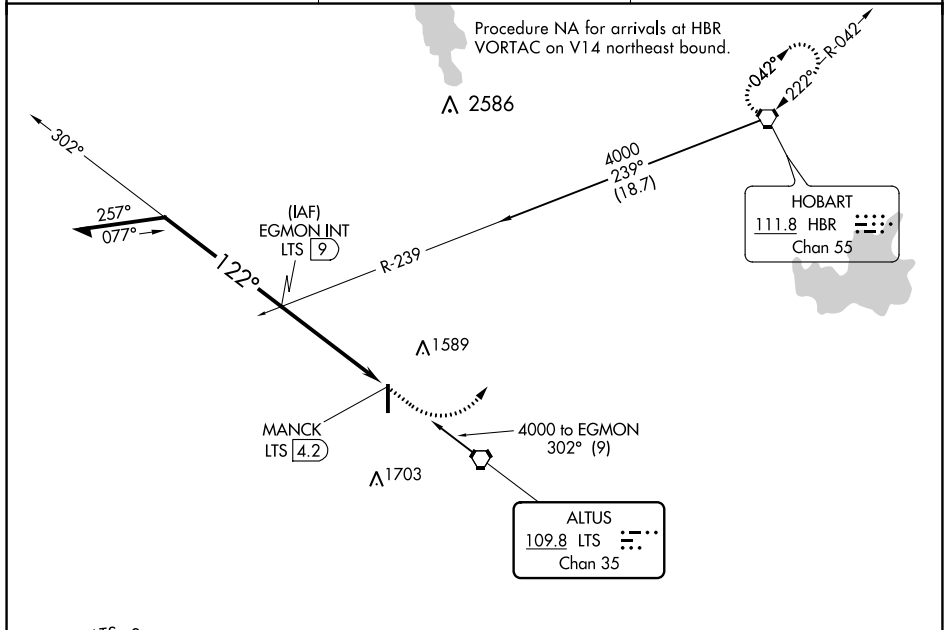
VOR-A

ALTUS/QUARTZ MOUNTAIN RGNL (A.X.S)

⚠ When local altimeter setting not received, use Hobart Rgnl altimeter setting and increase all MDA 80 feet. Increase Circling Cat C visibility ¼ mile.

MISSED APPROACH: Climb to 2500 then climbing left turn to 4000 direct HBR VORTAC and hold.

AWOS-3PT 118.825	ALTUS APP CON* 125.1 353.7	UNICOM 122.8 (CTAF) 0
----------------------------	--------------------------------------	---------------------------------



CATEGORY	A		B		C		D		FAF to MAP 4.8 NM				
	1920-1	487 (500-1)	2020-1½	587 (600-1½)	NA	Knots	60	90	120	150	180		
C CIRCLING							Min:Sec	4:48	3:12	2:24	1:55	1:36	

SC-1, 22 FEB 2024 to 21 MAR 2024

SC-1, 22 FEB 2024 to 21 MAR 2024