

LOC/DME I-BFT 109.75 Chan 34 (Y)	APP CRS 245°	Rwy Idg 24R 24L TDZE 6003 5197 583 584 Apt Elev 584 584
--	------------------------	--

ILS or LOC RWY 24R

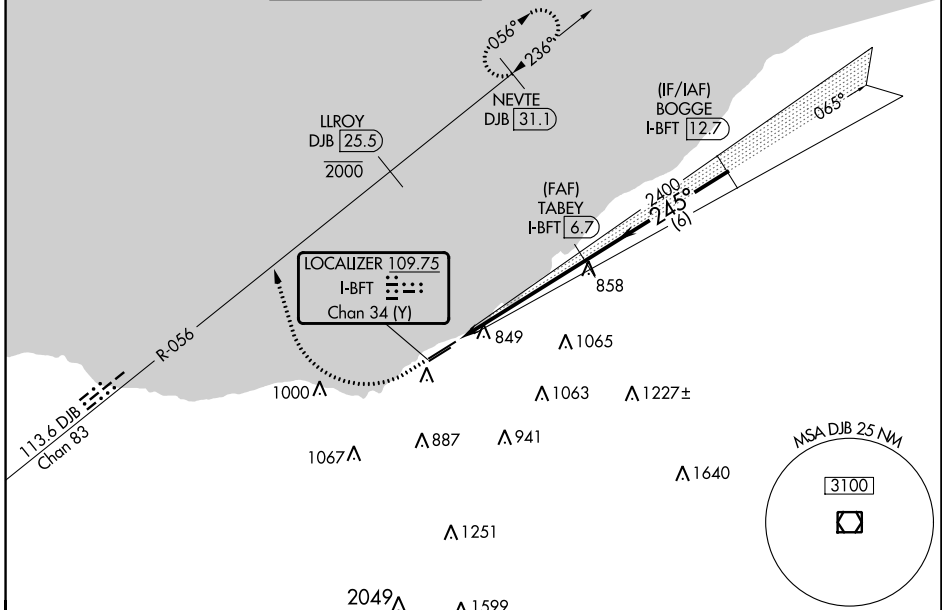
BURKE LAKEFRONT (BKL)

DME required. RADAR required for procedure entry.

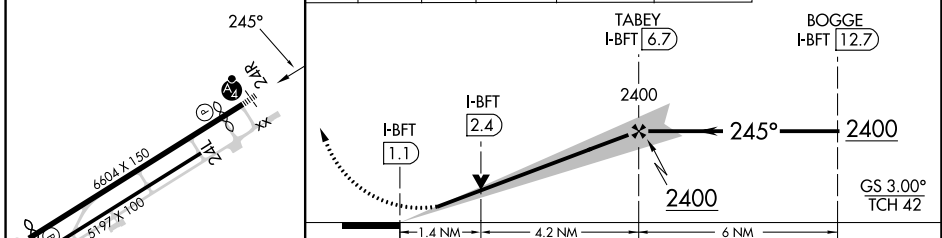
MALS F MISSED APPROACH: Climb to 1120 then climbing right turn heading 350° and DJB VOR/DME R-056 to cross LLROY/DJB 25.5 DME at or below 2000 then climb to 3000 on DJB VOR/DME R-056 northeast course to NEVTE/DJB 31.1 DME and hold.

⚠ Circling Rwy 6R NA at night. Rwy 24R helicopter visibility reduction below 3/4 SM NA. Circling NA southeast of Rwy 6R-24L. S-ILS minimums NA when control tower closed.

ATIS 125.25	CLEVELAND APP CON 125.35 346.325	LAKEFRONT TOWER ★ 124.3 (CTAF) 0 339.8	GND CON 121.9 339.8	CLNC DEL 339.8	CLNC DEL 121.9 (when twr closed)	UNICOM 122.95 0
-----------------------	--	---	-------------------------------	--------------------------	---	----------------------------------



ELEV 584	D TDZE 24R 583 TDZE 24L 584	1120	↑ hdg 350°	DJB R-056	LLROY DJB [25.5] 2000	3000	↑ DJB R-056 NE crs	NEVTE DJB [31.1]
----------	---------------------------------------	------	---------------	-----------	--------------------------	------	-----------------------	------------------



CATEGORY	A	B	C	D
S-ILS 24R	916-3/4 333 (400-3/4)			
S-LOC 24R	1060-3/4	477 (500-3/4)	1060-1 1/8	477 (500-1 1/8)
SIDESTEP 24L	1060-1	476 (500-1)	1060-1 1/2	1060-2
CIRCLING	1060-1	476 (500-1)	1140-1 1/2	1200-2
			556 (600-1 1/2)	616 (700-2)

EC-2, 22 FEB 2024 to 21 MAR 2024

EC-2, 22 FEB 2024 to 21 MAR 2024

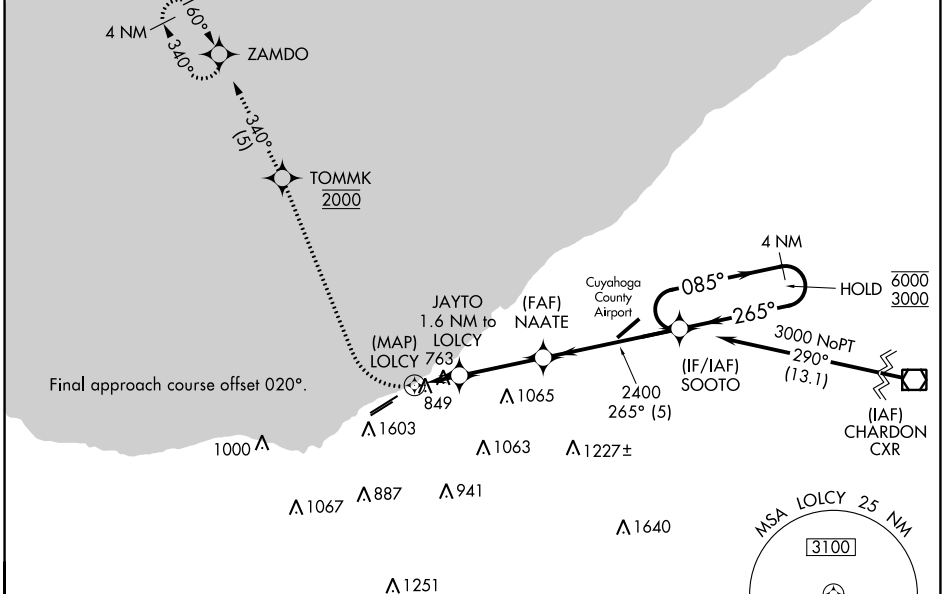
WAAS CH 77621 W24A	APP CRS 265°	Rwy Idg TDZE Apt Elev	6003 583 584
--	------------------------	-----------------------------	---

RNAV (GPS) RWY 24R

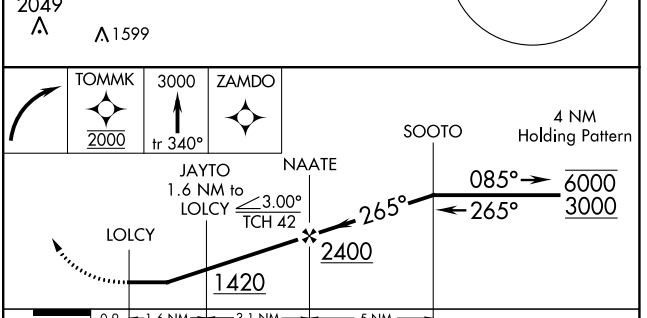
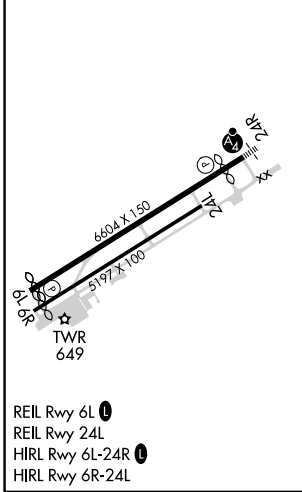
BURKE LAKEFRONT (BKL)

RNP APCH.	<p>⚠ Circling Rwy 6R NA at night. Rwy 24R helicopter visibility reduction below 3/4 SM NA. Circling NA SE of Rwy 6R and 24L. For inop ALS, increase LNAV Cat C/D visibility to 1 3/8 SM.</p>	MALSF	<p>MISSED APPROACH: Climbing right turn direct TOMMK, cross TOMMK at 2000, then climb to 3000 on track 340° to ZAMDO and hold.</p>
<p>⚠</p>			

ATIS 125.25	CLEVELAND APP CON 125.35 346.325	LAKEFRONT TOWER ★ 124.3 (CTAF) 0 339.8	GND CON 121.9 339.8	CLNC DEL 339.8	CLNC DEL 121.9 (when twr closed)	UNICOM 122.95 0
-----------------------	--	--	-------------------------------	--------------------------	---	---------------------------



ELEV 584	D	TDZE 583
----------	----------	----------



	0.9	1.6 NM	3.1 NM	5 NM		
CATEGORY	A		B		C	D
LP MDA	1020-3/4		437 (500-3/4)		1020-1	437 (500-1)
LNAV MDA	1100-3/4		517 (600-3/4)		1100-1 1/4	517 (600-1 1/4)
C CIRCLING	1100-1		516 (600-1)		1140-1 1/2	1200-2
					556 (600-1 1/2)	616 (700-2)

EC-2, 22 FEB 2024 to 21 MAR 2024

EC-2, 22 FEB 2024 to 21 MAR 2024