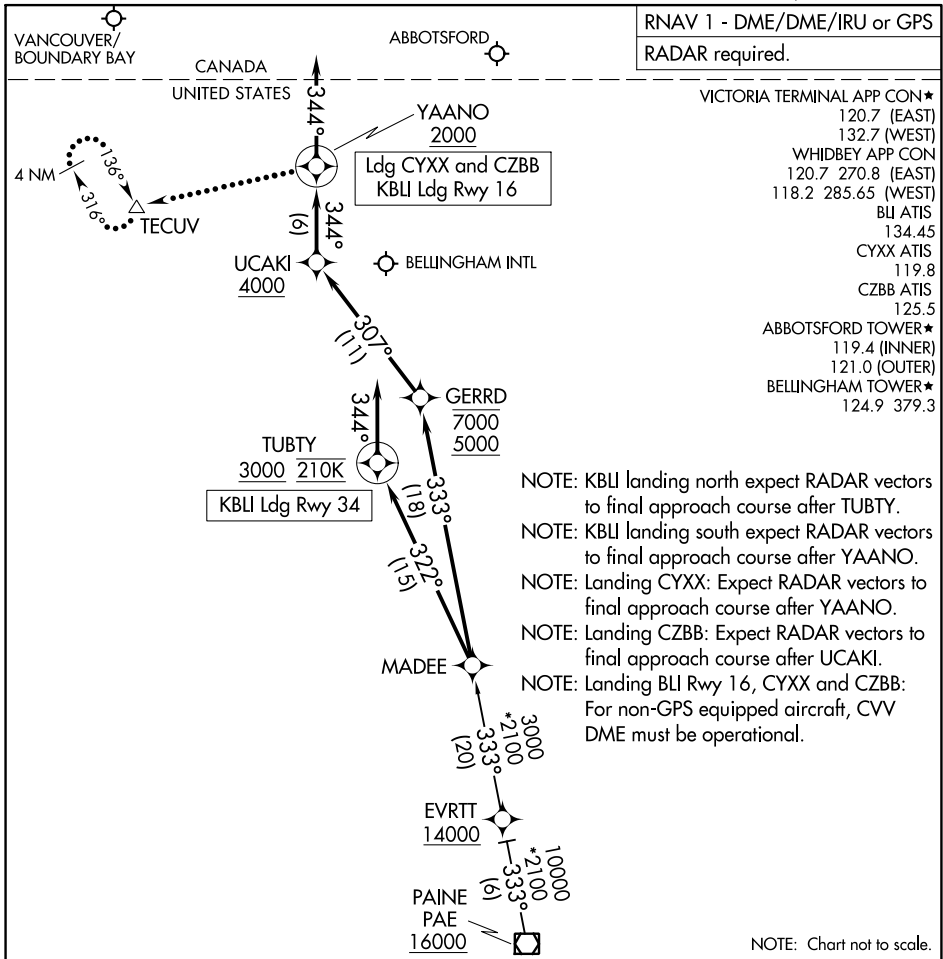


MADEE FIVE ARRIVAL (RNAV)

AL-45 (FAA)

BELLINGHAM, WASHINGTON



NW-1, 22 FEB 2024 to 21 MAR 2024

NW-1, 22 FEB 2024 to 21 MAR 2024

ARRIVAL ROUTE DESCRIPTION

PAINE TRANSITION (PAE.MADEE5)

LANDING BLI RUNWAY 16: From MADEE on track 333° to cross GERRD between 5000 and 7000, then on track 307° to cross UCAKI at or above 4000, then on track 344° to cross YAANO at or above 2000, then on track 344°. Expect RADAR vectors to final approach course.

LANDING BLI RUNWAY 34: From MADEE on track 322° to cross TUBTY at or above 3000 and at 210K, then on track 344°. Expect RNAV (RNP/GPS) RWY 34 approach or RADAR vectors to final approach course.

LANDING CZBB/CYXX: From MADEE on track 333° to cross GERRD between 5000 and 7000, then on track 307° to cross UCAKI at or above 4000, then on track 344° to cross YAANO at or above 2000, then on track 344°. Expect RADAR vectors to final approach course.

LOST COMMUNICATIONS

LANDING BLI RUNWAY 16: After UCAKI conduct RNAV (RNP) Z RWY 16 approach; if unable, proceed to YAANO maintain 2000 and proceed to TEUCV and hold.

LANDING CYXX and CZBB: After YAANO maintain 2000 and proceed to TEUCV and hold.