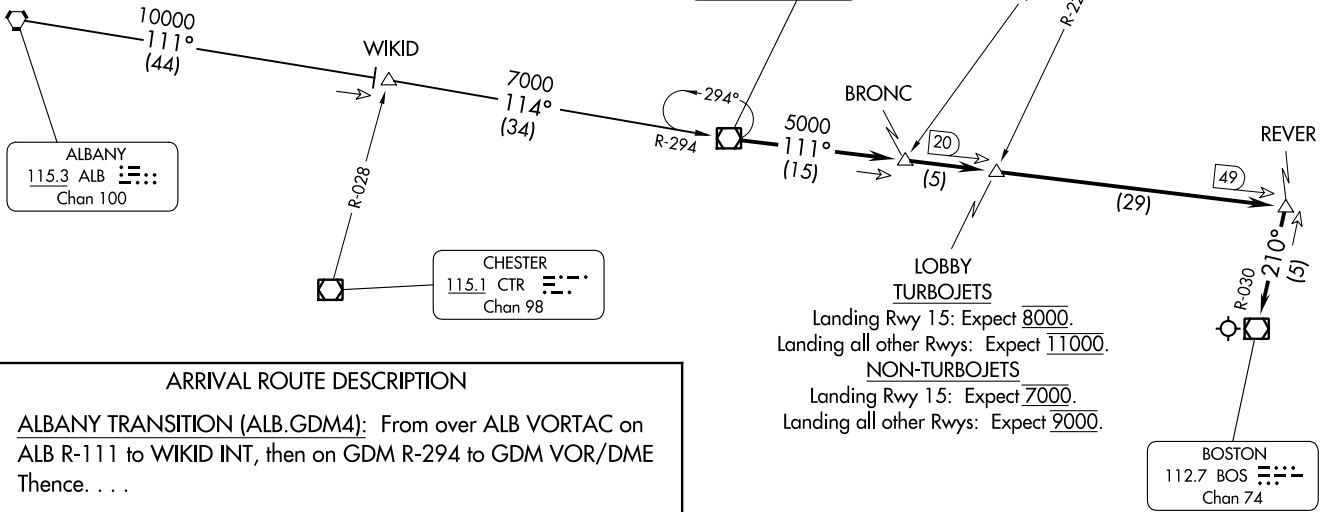


D-ATIS  
 135.0  
 BOSTON APP CON  
 118.25 263.1

NOTE: RADAR required.



ARRIVAL ROUTE DESCRIPTION

ALBANY TRANSITION (ALB.GDM4): From over ALB VORTAC on ALB R-111 to WIKID INT, then on GDM R-294 to GDM VOR/DME Thence. . . .

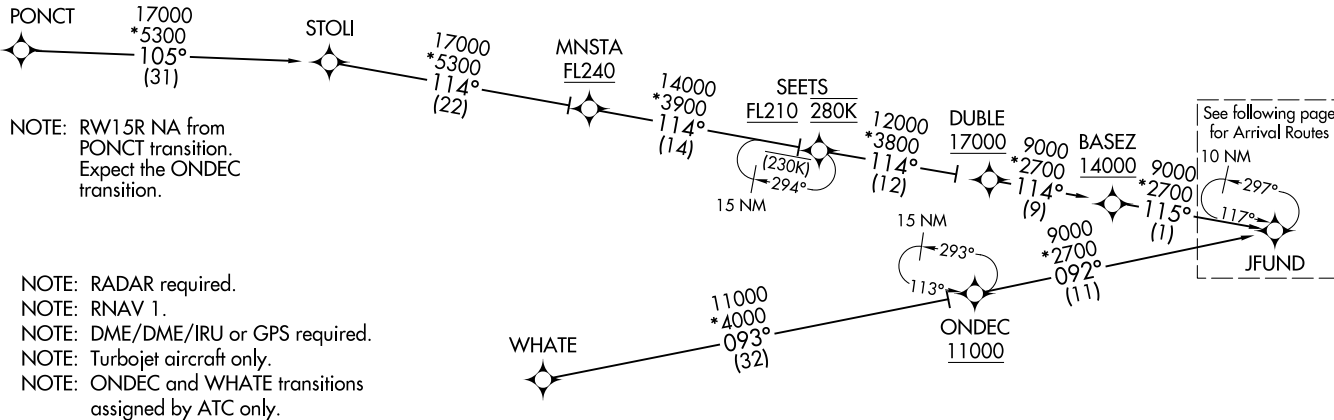
. . . .From over GDM VOR/DME on GDM R-111 to BRONC INT, then to LOBBY INT, then to REVER INT, then on BOS R-030 to BOS VOR/DME. Expect radar vectors to final approach course prior to BOS VOR/DME.

Landing Rwy 15: Expect 8000.  
 Landing all other Rwys: Expect 11000.  
**NON-TURBOJETs**  
 Landing Rwy 15: Expect 7000.  
 Landing all other Rwys: Expect 9000.

NOTE: Chart not to scale.

JFUND TWO ARRIVAL (RNAV) Transition Routes  
(JFUND.JFUND2) 120OCT17  
GENERAL EDWARD LAWRENCE LOGAN INTL (BOS)  
BOSTON, MASSACHUSETTS

D-ATIS  
135.0  
BOSTON APP CON  
120.6 263.1



NOTE: RW15R NA from PONCT transition. Expect the ONDEC transition.

NOTE: RADAR required.  
NOTE: RNAV 1.  
NOTE: DME/DME/IRU or GPS required.  
NOTE: Turbojet aircraft only.  
NOTE: ONDEC and WHATE transitions assigned by ATC only.



NOTE: Not to scale.

(CONTINUED ON FOLLOWING PAGE)

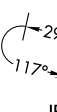
ONDEC TRANSITION (ONDEC.JFUND2):  
PONCT TRANSITION (PONCT.JFUND2)  
WHATE TRANSITION (WHATE.JFUND2):

(JFUND.JFUND2) 21158  
GENERAL EDWARD LAWRENCE LOGAN INTL (BOS)  
AL-58 (FAA)  
BOSTON, MASSACHUSETTS

JFUND TWO ARRIVAL (RNAV) Arrival Routes  
(JFUND.JFUND2) 120OCT17  
BOSTON, MASSACHUSETTS  
GENERAL EDWARD LAWRENCE LOGAN INTL (BOS)

D-ATIS  
135.0  
BOSTON APP CON  
120.6 263.1

10 NM



- NOTE: RADAR required.
- NOTE: RNAV 1.
- NOTE: DME/DME/IRU or GPS required.
- NOTE: Turbojet aircraft only.
- NOTE: ONDEC and WHATE transitions assigned by ATC only.

N

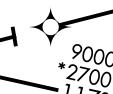


NOTE: Not to scale.

WACHU  
7000 210K



BADCA  
9000 250K



JFUND



AUTUM  
12000 270K  
11000



5000 SSAAM \*1700  
121° (4) \*1700 148°



AADMS



WINTA  
10000 250K  
8000



ISLAY  
6000 220K



HRRIS



SPYSD  
7000 220K



GGABE  
6000 220K



GRIFI



REVER  
4000 093° (8)



BRODI  
6000



BECHH  
5000 220K



SEHAG  
6000 210K



SCITU  
5000 210K



JOBEE  
6000 210K



LWLND  
6000 210K



NOTE: RW15R NA from  
PONCT transition.  
Expect the ONDEC  
transition.

(NARRATIVE ON FOLLOWING PAGE)

(JFUND.JFUND2) 21056  
GENERAL EDWARD LAWRENCE LOGAN INTL (BOS)  
BOSTON, MASSACHUSETTS  
GENERAL EDWARD LAWRENCE LOGAN INTL (BOS)  
AL-58 (FAA)

ARRIVAL ROUTE DESCRIPTION

LANDING RUNWAY 4R/L: From JFUND on track 117° to cross AUTUM between 11000 and 12000 and at 270K, then on track 121° to cross WINTA between 8000 and 10000 and at 250K, then on track 120° to HRRIS, then on track 112° to cross SPYSD at 7000 and at 220K, then on track 170° to GRIFI, then on track 213° to cross GGABE at 6000 and at 220K, then on track 213° to cross JOBEE at 6000 and at 210K, then on track 213°. Expect RADAR vectors to final approach course.

LANDING RUNWAY 15R: From JFUND on track 090° to cross BADCA at or above 9000 and at 250K, then on track 090° to cross WACHU at 7000 and at 210K, then on track 121° to SSAAM, then on track 148° to AADMS, then on track 148°. Expect RADAR vectors to final approach course.

LANDING RWY 22R/L: From JFUND on track 117° to cross AUTUM between 11000 and 12000 and at 270K, then on track 121° to cross WINTA between 8000 and 10000 and at 250K, then on track 120° to HRRIS, then on track 079° to cross ISLAY at 6000 and at 220K, then on track 035° to cross LWLND at 6000 and at 210K, then on track 035°. Expect RADAR vectors to final approach course.

LANDING RUNWAY 27: From JFUND on track 117° to cross AUTUM between 11000 and 12000 and at 270K, then on track 121° to cross WINTA between 8000 and 10000 and at 250K, then on track 120° to HRRIS, then on track 112° to cross SPYSD at 7000 and at 220K, then on track 115° to REVER, then on track 093° to cross SEHAG at 6000 and at 210K, then on track 093°. Expect RADAR vectors to final approach course.

LANDING RUNWAYS 32, 33L: From JFUND on track 117° to cross AUTUM between 11000 and 12000 and at 270K, then on track 121° to cross WINTA between 8000 and 10000 and at 250K, then on track 120° to HRRIS, then on track 112° to cross SPYSD at 7000 and at 220K, then on track 144° to cross BRODI at or below 6000, then on track 144° to cross BECHH at 5000 and at 220K, then on track 150° to cross SCITU at 5000 and at 210K, then on track 150°. Expect RADAR vectors to final approach course.

NE-1, 22 FEB 2024 to 21 MAR 2024

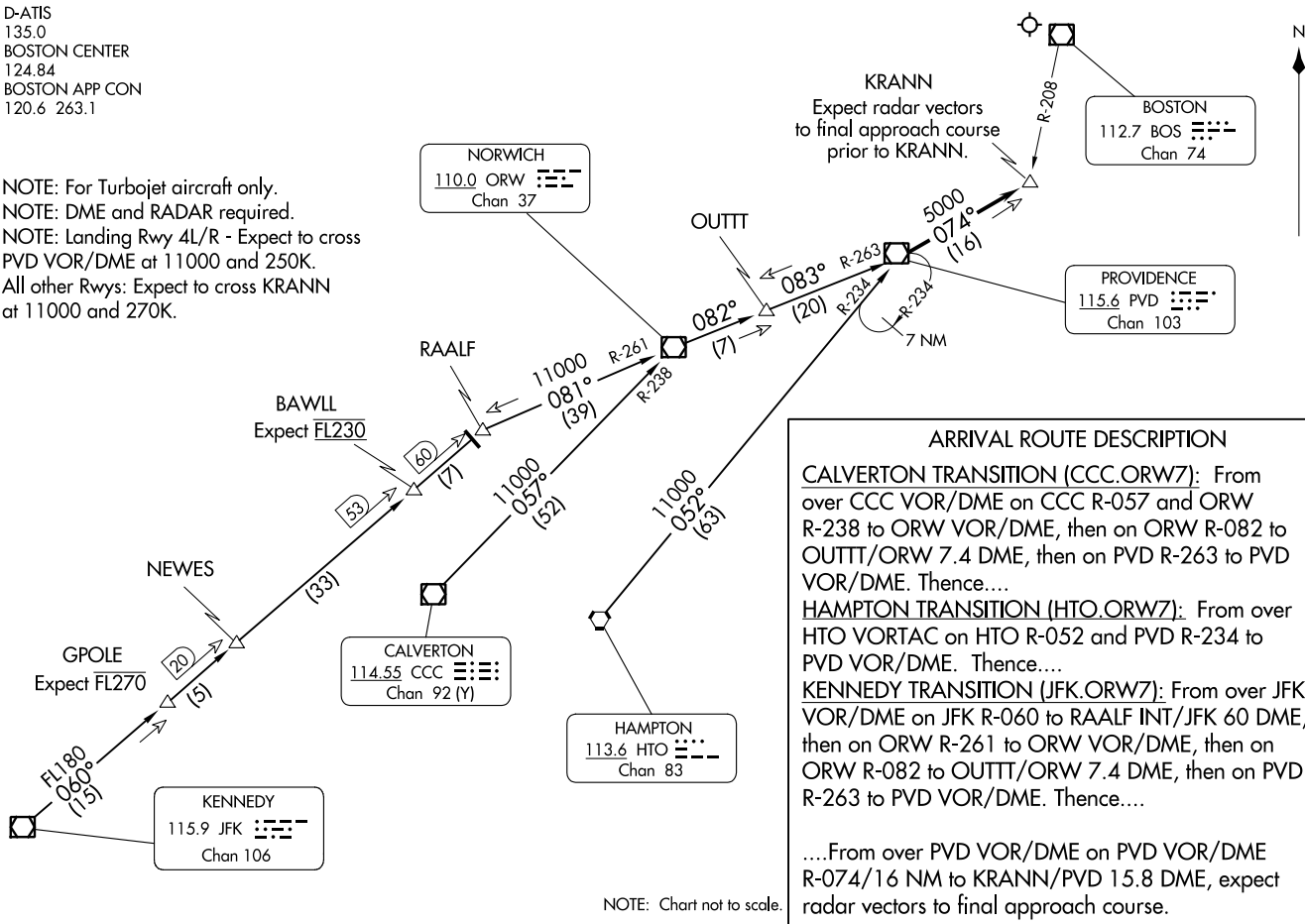
NE-1, 22 FEB 2024 to 21 MAR 2024

NORWICH SEVEN ARRIVAL  
(ORW.ORW7) 21 JUL 16

(ORW.ORW7) 23334  
NORWICH SEVEN ARRIVAL

D-ATIS  
135.0  
BOSTON CENTER  
124.84  
BOSTON APP CON  
120.6 263.1

NOTE: For Turbojet aircraft only.  
NOTE: DME and RADAR required.  
NOTE: Landing Rwy 4L/R - Expect to cross PVD VOR/DME at 11000 and 250K.  
All other Rwys: Expect to cross KRANN at 11000 and 270K.



**ARRIVAL ROUTE DESCRIPTION**

**CALVERTON TRANSITION (CCC.ORW7):** From over CCC VOR/DME on CCC R-057 and ORW R-238 to ORW VOR/DME, then on ORW R-082 to OUTF/OFW 7.4 DME, then on PVD R-263 to PVD VOR/DME. Thence....

**HAMPTON TRANSITION (HTO.ORW7):** From over HTO VORTAC on HTO R-052 and PVD R-234 to PVD VOR/DME. Thence....

**KENNEDY TRANSITION (JFK.ORW7):** From over JFK VOR/DME on JFK R-060 to RAALF INT/JFK 60 DME, then on ORW R-261 to ORW VOR/DME, then on ORW R-082 to OUTF/OFW 7.4 DME, then on PVD R-263 to PVD VOR/DME. Thence....

....From over PVD VOR/DME on PVD VOR/DME R-074/16 NM to KRANN/PVD 15.8 DME, expect radar vectors to final approach course.

NOTE: Chart not to scale.

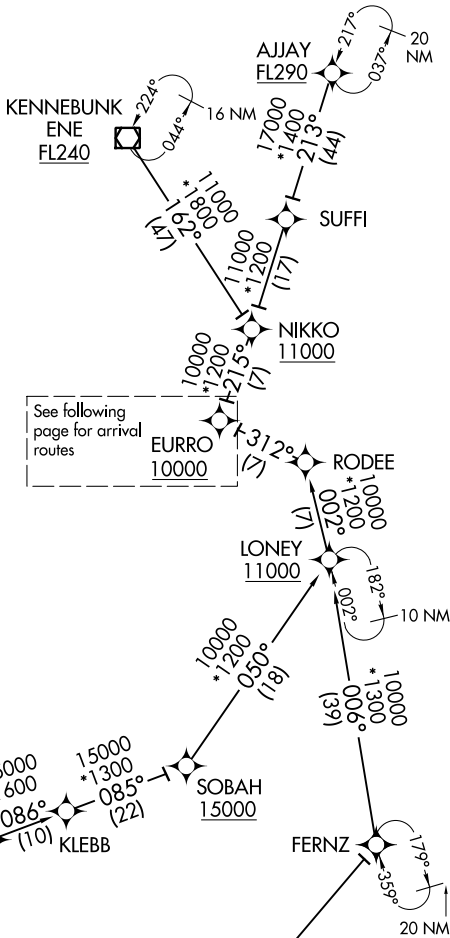
GENERAL EDWARD LAWRENCE LOGAN INTL (BOS)  
BOSTON, MASSACHUSETTS

GENERAL EDWARD LAWRENCE LOGAN INTL (BOS)  
BOSTON, MASSACHUSETTS  
AL-58 (FAA)

OOSH5 FIVE ARRIVAL (RNAV) Transition Routes

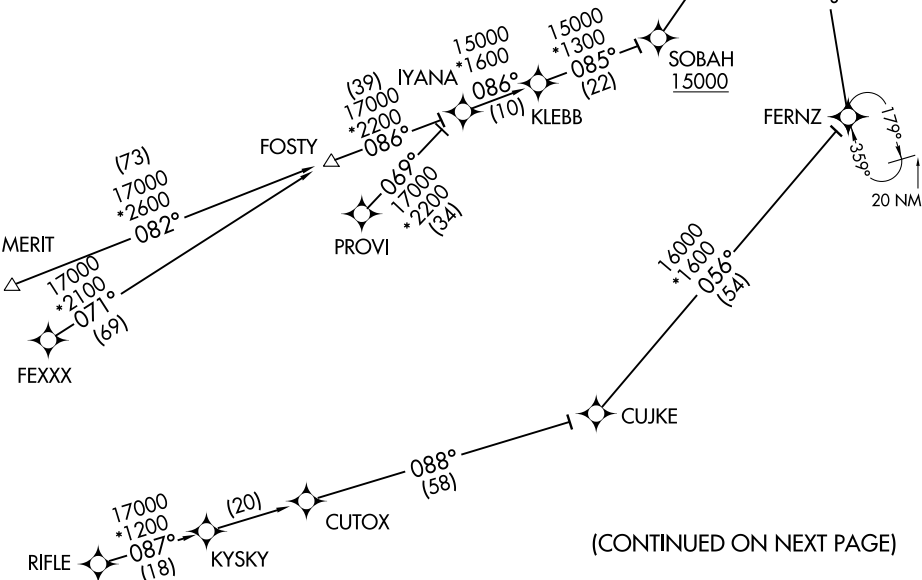
D-ATIS  
135.0  
BOSTON APP CON  
120.6 263.1

- NOTE: RADAR required.
- NOTE: RNAV 1.
- NOTE: DME/DME/IRU or GPS required.
- NOTE: Turbojet aircraft only.
- NOTE: FEXXX, MERIT, PROVI, RIFLE transitions assigned by ATC only.



See following page for arrival routes

- AJJAY TRANSITION (AJJAY.OOSH5)
- FERNZ TRANSITION (FERNZ.OOSH5)
- FEXXX TRANSITION (FEXXX.OOSH5)
- KENNEBUNK TRANSITION (ENE.OOSH5)
- MERIT TRANSITION (MERIT.OOSH5)
- PROVI TRANSITION (PROVI.OOSH5)
- RIFLE TRANSITION (RIFLE.OOSH5)



(CONTINUED ON NEXT PAGE)

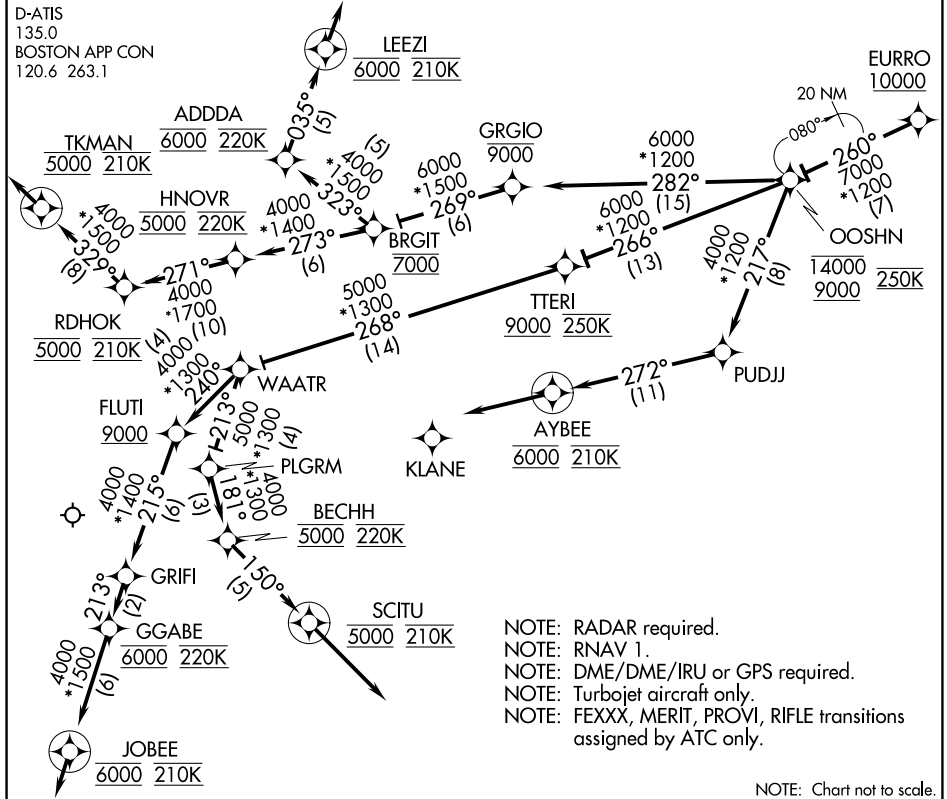
NOTE: Chart not to scale.

OOSH5 FIVE ARRIVAL (RNAV) Transition Routes

NE-1, 22 FEB 2024 to 21 MAR 2024

NE-1, 22 FEB 2024 to 21 MAR 2024

# OOSHNS FIVE ARRIVAL (RNAV) Arrival Routes



NE-1, 22 FEB 2024 to 21 MAR 2024

NE-1, 22 FEB 2024 to 21 MAR 2024

## ARRIVAL ROUTE DESCRIPTION

From EURO on track 260° to cross OOSHNS between 9000 and 14000 and at 250K.

Landing Rwy 4L/R: From OOSHNS on track 266° to cross TTERI at or above 9000 and at 250K, then on track 268° to WAATR, then on track 240° to cross FLUTI at or above 9000, then on track 215° to GRIFI, then on track 213° to cross GGABE at 6000 and at 220K, then on track 213° to cross JOBEE at 6000 and at 210K, then on track 213°. Expect RADAR vectors to final approach course.

Landing Rwy 15R: From OOSHNS on track 282° cross GARGIO at or below 9000, then on track 269° to cross BRGIT at 7000, then on track 273° to cross HNOVR at 5000 and at 220K, then on track 271° to cross RDHOK at 5000 and at 210K, then on track 329° to cross TKMAN at 5000 and at 210K, then on track 329°. Expect RADAR vectors to final approach course.

Landing Rwy 22L/R: From OOSHNS on track 282° to cross GARGIO at or below 9000, then on track 269° to cross BRGIT at 7000, then on track 323° to cross ADDDA at 6000 and at 220K, then on track 035° to cross LEEZI at 6000 and at 210K, then on track 035°. Expect RADAR vectors to final approach course.

Landing Rwy 27: From OOSHNS on track 217° to PUDJJ, then on track 272° to cross AYBEE at 6000 and at 210K, then on track 272°. Expect RADAR vectors to final approach course.

Landing Rwy 32, 33L: From OOSHNS on track 266° to cross TTERI at or above 9000 at 250K, then on track 268° to WAATR, then on track 213° to PLGRM, then on track 181° to cross BECHH at 5000 and at 220K, then on track 150° to cross SCITU at 5000 and at 210K, then on track 150°. Expect RADAR vectors to final approach course.

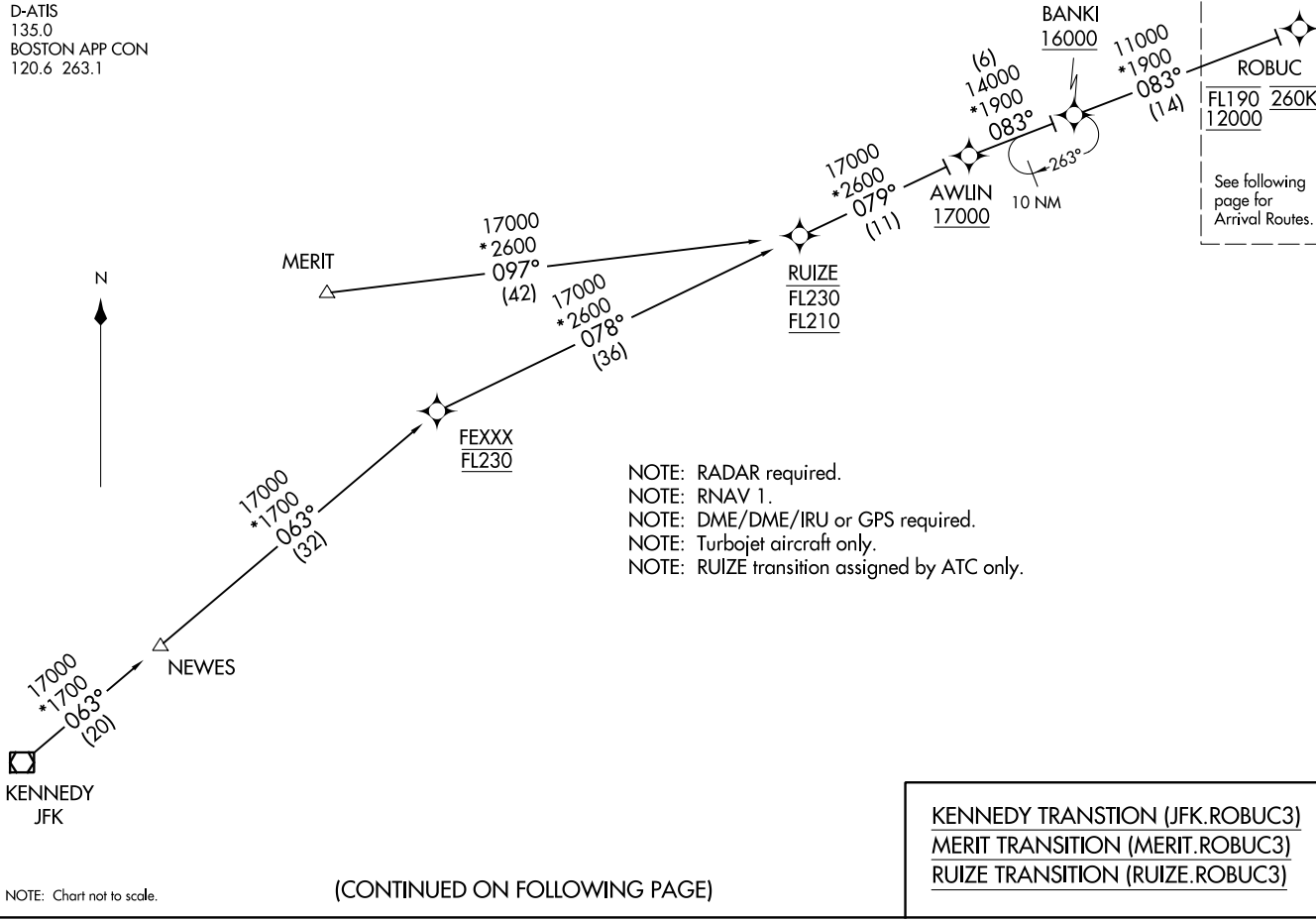
NOTE: Chart not to scale.

# OOSHNS FIVE ARRIVAL (RNAV) Arrival Routes

D-ATIS  
135.0  
BOSTON APP CON  
120.6 263.1

**ROBUC THREE ARRIVAL (RNAV) Transition Routes**  
(ROBUC.ROBUC3) 120CTT7

BOSTON, MASSACHUSETTS  
GENERAL EDWARD LAWRENCE LOGAN INTL (BOS)



ROBUC  
FL190 260K  
FL2000

See following page for Arrival Routes.

- NOTE: RADAR required.
- NOTE: RNAV 1.
- NOTE: DME/DME/IRU or GPS required.
- NOTE: Turbojet aircraft only.
- NOTE: RUIZE transition assigned by ATC only.

KENNEDY TRANSITION (JFK.ROBUC3)  
MERIT TRANSITION (MERIT.ROBUC3)  
RUIZE TRANSITION (RUIZE.ROBUC3)

(CONTINUED ON FOLLOWING PAGE)

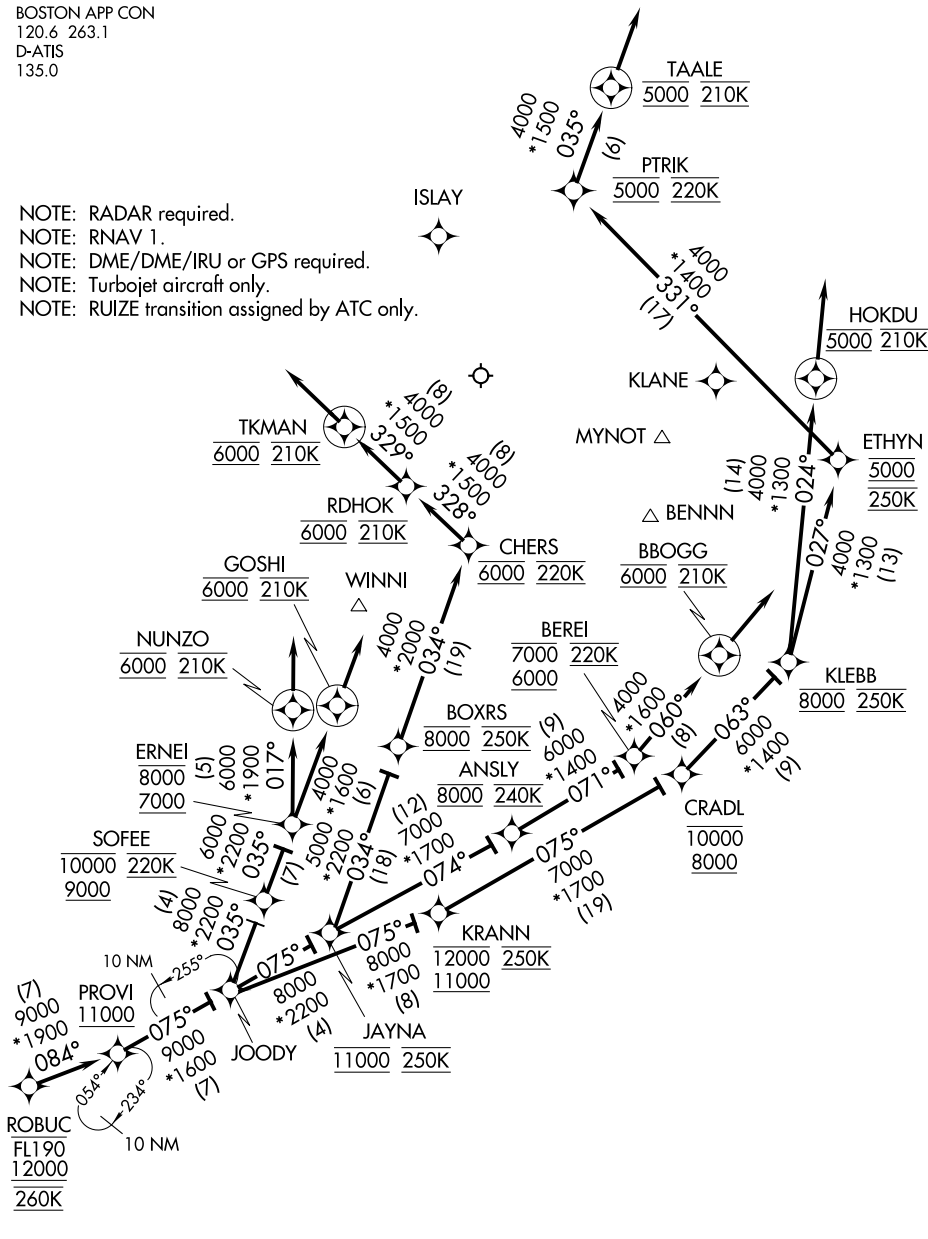
(ROBUC.ROBUC3) 17285  
AL-58 (FAA)  
GENERAL EDWARD LAWRENCE LOGAN INTL (BOS)  
Transition Routes  
BOSTON, MASSACHUSETTS



ROBUC THREE ARRIVAL (RNAV) Arrival Routes

BOSTON APP CON  
120.6 263.1  
D-ATIS  
135.0

- NOTE: RADAR required.
- NOTE: RNAV 1.
- NOTE: DME/DME/IRU or GPS required.
- NOTE: Turbojet aircraft only.
- NOTE: RUIZE transition assigned by ATC only.



NE-1, 22 FEB 2024 to 21 MAR 2024

NE-1, 22 FEB 2024 to 21 MAR 2024

NOTE: Chart not to scale.

(NARRATIVE ON FOLLOWING PAGE)

ROBUC THREE ARRIVAL (RNAV) Arrival Routes

ARRIVAL ROUTE DESCRIPTION

From ROBUC on track 084° to cross PROVI at or above 11000, then on track 075° to JOODY. Then on assigned runway transition.

LANDING RWY 4L: From JOODY on track 035° to cross SOFEE between 9000 and 10000 and at 220K, then on track 035° to cross ERNEI between 7000 and 8000, then on track 017° to cross NUNZO at 6000 and at 210K, then on track 017°. Expect RADAR vectors to final approach course.

LANDING RWY 4R: From JOODY on track 035° to cross SOFEE between 9000 and 10000 and at 220K, then on track 035° to cross ERNEI between 7000 and 8000, then on track 035° to cross GOSHI at 6000 and at 210K, then on track 035°. Expect RADAR vectors to final approach course.

LANDING RWY 15R: From JOODY on track 075° to cross JAYNA at 11000 and at 250K, then on track 034° to cross BOXRS at 8000 and at 250K, then on track 034° to cross CHERS at 6000 and at 220K, then on track 328° to cross RDHOK at 6000 and at 210K, then on track 329° to cross TKMAN at 6000 and at 210K, then on track 329°. Expect RADAR vectors to final approach course.

LANDING RWY 22L/R: From JOODY on track 075° to cross KRANN between 11000 and 12000 and at 250K, then on track 075° to cross CRADL between 8000 and 10000, then on track 063° to cross KLEBB at 8000 and at 250K, then on track 027° to cross ETHYN at 5000 and at 250K, then on track 331° to cross PTRIK at 5000 and at 220K, then on track 035° to cross TAALE at 5000 and at 210K, then on track 035°. Expect RADAR vectors to final approach course.

LANDING RWY 27: From JOODY on track 075° to cross KRANN between 11000 and 12000 and at 250K, then on track 075° to cross CRADL between 8000 and 10000, then on track 063° to cross KLEBB at 8000 and at 250K, then on track 024° to cross HOKDU at 5000 and at 210K, then on track 024°. Expect RADAR vectors to final approach course.

LANDING RWYS 32, 33L: From JOODY on track 075° to cross JAYNA at 11000 and at 250K, then on track 074° to cross ANSLY at 8000 and at 240K, then on track 071° to cross BEREI between 6000 and 7000 and at 220K, then on track 060° to cross BBOGG at 6000 and at 210K, then on track 060°. Expect RADAR vectors to final approach course.

NE-1, 22 FEB 2024 to 21 MAR 2024

NE-1, 22 FEB 2024 to 21 MAR 2024


# WOONS TWO ARRIVAL

AL-58 (FAA)

BOSTON, MASSACHUSETTS

BOSTON APP CON  
120.6 263.1  
BOS D-ATIS ARR  
135.0  
OWD ATIS  
119.95

GENERAL EDWARD  
LAWRENCE LOGAN INTL


BOSTON  
112.7 BOS   
Chan 74

NORWOOD  
MEML

MARSHFIELD MUNI-  
GEORGE HARLOW FLD

MANSFIELD  
MUNI


WOONS  
BOS Props: Expect to cross  
at 7,000'  
OWD, 1B9, GHG: Expect to  
cross at 3,000'

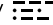
PUTNAM  
117.4 PUT   
Chan 121

HEFTY

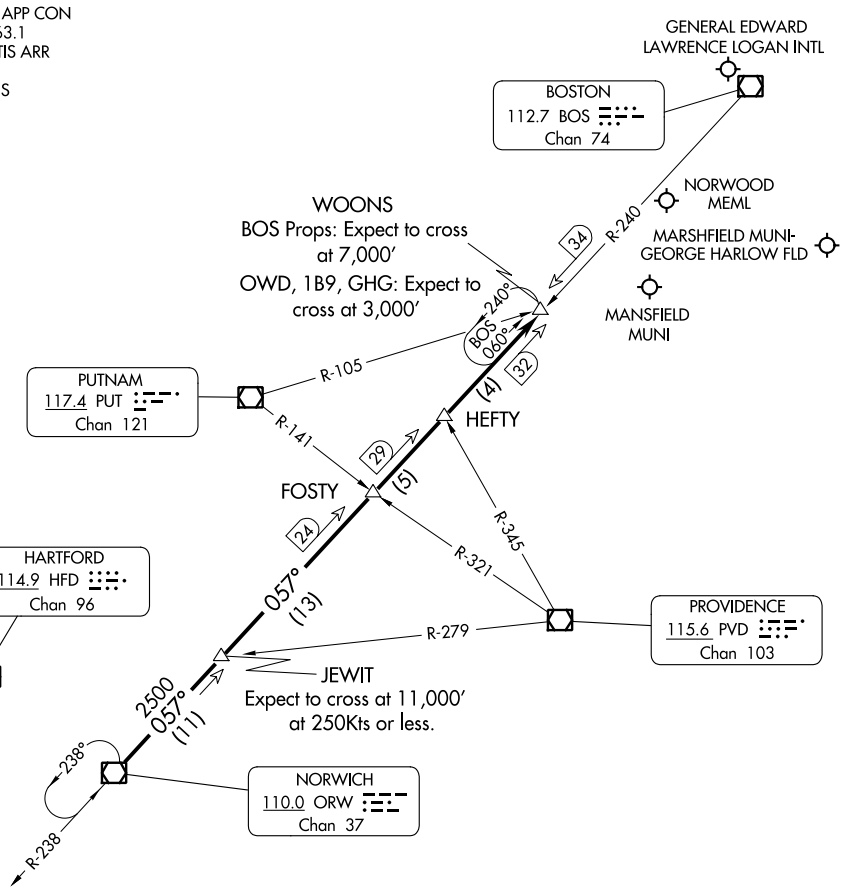
HARTFORD  
114.9 HFD   
Chan 96

FOSTY

PROVIDENCE  
115.6 PVD   
Chan 103

NORWICH  
110.0 ORW   
Chan 37

JEWIT  
Expect to cross at 11,000'  
at 250Kts or less.



NOTE: Chart not to scale

NOTE: Applicable to props landing BOS and all aircraft landing OWD, 1B9 and GHG.  
Applicable 11,000 feet and above.

From over ORW VOR/DME via ORW R-057 to WOONS INT. Expect RADAR vectors to final.

# WOONS TWO ARRIVAL

NE-1, 22 FEB 2024 to 21 MAR 2024

NE-1, 22 FEB 2024 to 21 MAR 2024