

| | | | |
|--|------------------------|---|-------------|
| WAAS CH 99536 W15A | APP CRS 151° | Rwy Idg TDZE 198 Apt Elev 198 | 4000 |
|--|------------------------|---|-------------|

RNAV (GPS) RWY 15

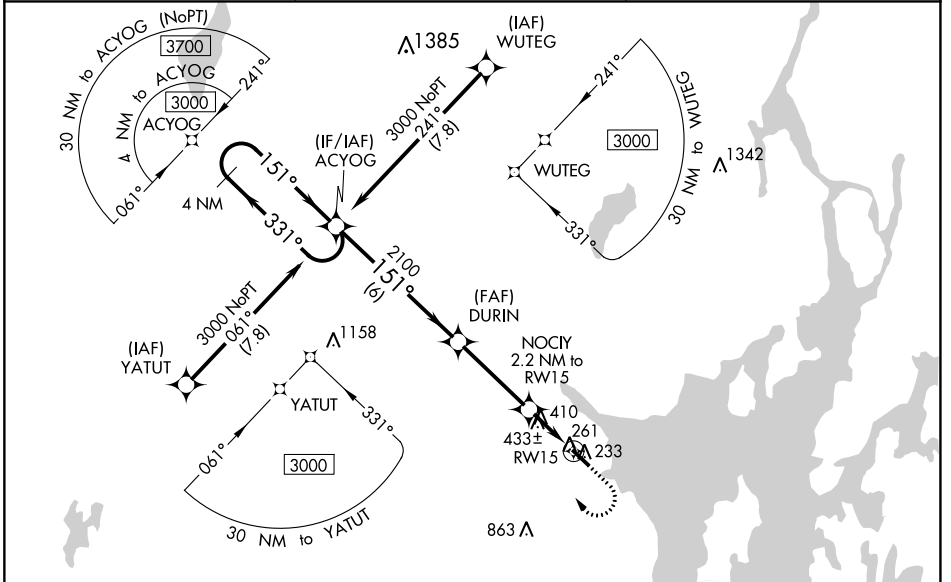
BELFAST MUNI (BST)

⚠ For uncompensated Baro-VNAV systems, LNAV/VNAV NA below -23°C (-9°F) or above 54°C (130°F). DME/DME RNP -0.3 NA. When local altimeter not received, use Bangor Intl altimeter setting and increase all DA/MDA 60 feet. Increase LPV all Cats visibility 1/8 mile; increase LNAV/VNAV all Cats visibility 3/8 mile; increase LNAV and Circling Cat C visibility 1/4 mile. Baro-VNAV NA when using Bangor Intl altimeter. Helicopter visibility reduction below 3/4 SM NA.

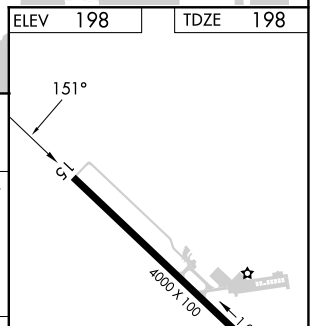
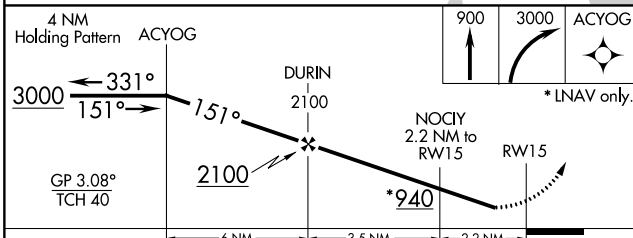
⚠ NA

MISSED APPROACH: Climb to 900 then climbing right turn to 3000 direct ACYOG and hold.

| | | |
|---------------------------|--|-----------------------------------|
| AWOS-AV 122.975 | BANGOR APP CON 118.925 239.3 | UNICOM 122.975 (CTAF) 0 |
|---------------------------|--|-----------------------------------|



| | |
|----------|----------|
| ELEV 198 | TDZE 198 |
|----------|----------|



| CATEGORY | A | B | C | D |
|-------------------|---------------------------|-------------------|----------------------------|----|
| LPV DA | 487-1 289 (300-1) | | | NA |
| LNAV/VNAV DA | 748-1 7/8 550 (600-1 7/8) | | | NA |
| LNAV MDA | 720-1 522 (600-1) | | 720-1 1/2 522 (600-1 1/2) | NA |
| C CIRCLING | 720-1 522 (600-1) | 800-1 602 (700-1) | 1040-2 1/2 842 (900-2 1/2) | NA |

MIRL Rwy 15-33 **0**
REIL Rwy 15 and 33 **0**

| | | | |
|--|------------------------|-----------------------------|---|
| WAAS CH 90336 W33A | APP CRS 332° | Rwy Idg TDZE Apt Elev | 4000 190 198 |
|--|------------------------|-----------------------------|---|

RNAV (GPS) RWY 33

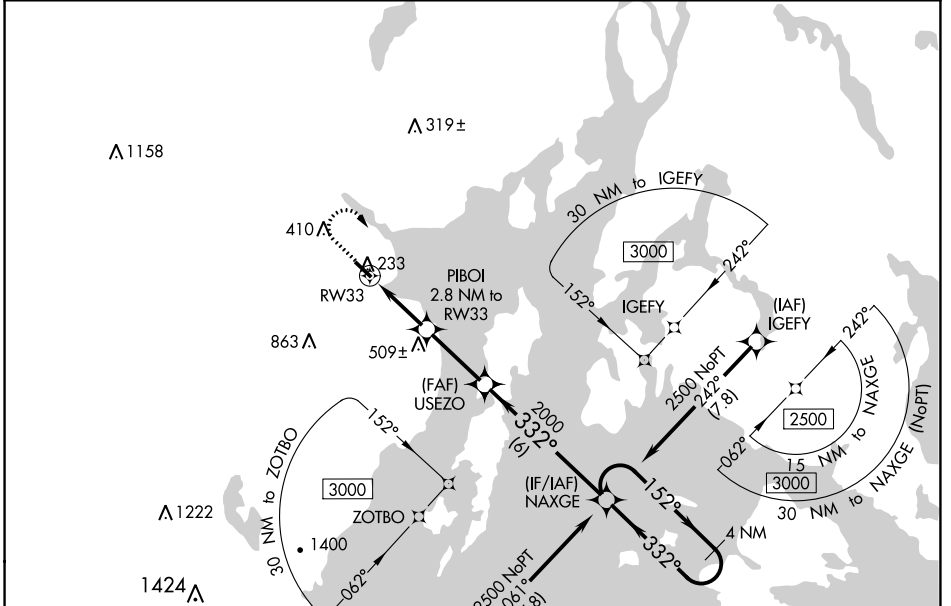
BELFAST MUNI (BST)

RNP APCH.

⚠ Baro-VNAV NA when using Bangor Intl altimeter setting. For uncompensated Baro-VNAV systems, LNAV/VNAV NA below -20°C (-4°F) or above 54°C (130°F). Rwy 33 helicopter visibility reduction below ¼ SM NA. When local altimeter setting not received, use Bangor Intl altimeter setting and increase all DA/MDA 60 feet; increase LPV Cats A/B, LNAV/VNAV all Cats and Circling Cat C visibility ½ SM.

⚠ MISSED APPROACH: Climb to 660 then climbing right turn to 2500 direct NAXGE and hold.

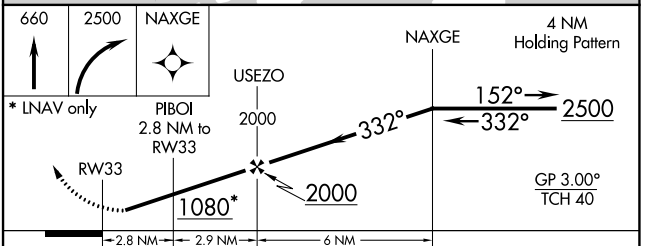
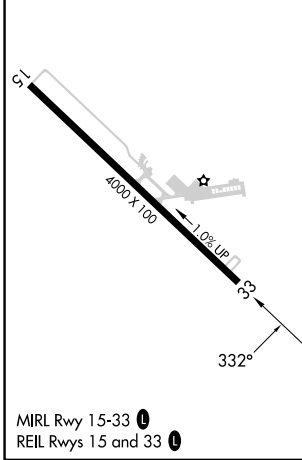
| | | |
|---------------------------|--|-----------------------------------|
| AWOS-AV 122.975 | BANGOR APP CON 118.925 239.3 | UNICOM 122.975 (CTAF) 0 |
|---------------------------|--|-----------------------------------|



NE-1, 22 FEB 2024 to 21 MAR 2024

NE-1, 22 FEB 2024 to 21 MAR 2024

| | |
|----------|----------|
| ELEV 198 | TDZE 190 |
|----------|----------|



| CATEGORY | A | B | C | D |
|-------------------|----------------------|----------------------|-------------------------|----|
| LPV DA | 440-1 | 250 (300-1) | | NA |
| LNAV/VNAV DA | 512-1¼ | 322 (400-1¼) | | NA |
| LNAV MDA | 580-1 | 390 (400-1) | 580-1½ 390 (400-1½) | NA |
| C CIRCLING | 700-1 502 (600-1) | 800-1 602 (700-1) | 1040-2½ 842 (900-2½) | NA |