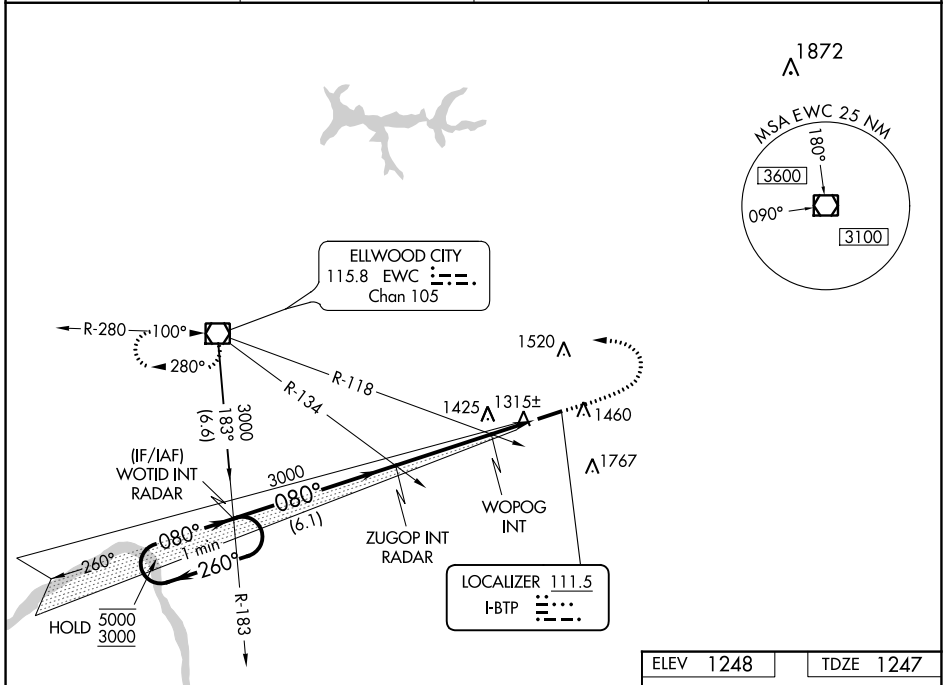


LOC I-BTP 111.5	APP CRS 080°	Rwy Idg 4801
		TDZE 1247
		Apt Elev 1248

ILS or LOC RWY 8

PITTSBURGH/BUTLER RGNL (BTP)

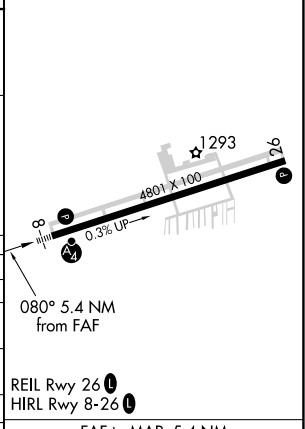
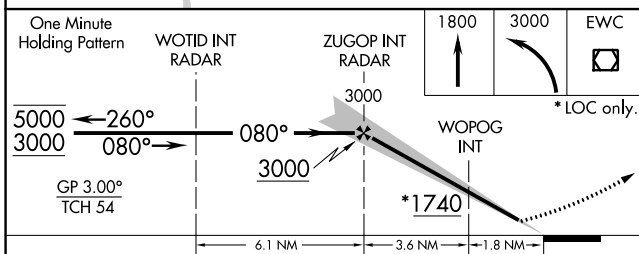
<p>Rwy 8 helicopter visibility reduction below 3/4 SM NA. Circling Rwy 26 NA at night. S-ILS 8 inop table does not apply.</p>	<p>MALSF</p>	<p>MISSED APPROACH: Climb to 1800 then climbing left turn to 3000 direct EWC VOR/DME and hold.</p>	
		AWOS-3PT 121.450	PITTSBURGH APP CON 124.75 338.2



NE-4, 22 FEB 2024 to 21 MAR 2024

NE-4, 22 FEB 2024 to 21 MAR 2024

ELEV 1248	TDZE 1247
-----------	-----------



CATEGORY	A	B	C	D
S-ILS 8	1497-3/4		250 (300-3/4)	
S-LOC 8	1740-3/4	493 (500-3/4)	1740-1 1/8	493 (500-1 1/8)
CIRCLING	1820-1	572 (600-1)	2080-2 1/2 832 (900-2 1/2)	2080-2 3/4 832 (900-2 3/4)
WOPOG FIX MINIMUMS (DUAL VOR RECEIVERS REQUIRED)				
S-LOC 8	1580-3/4		333 (400-3/4)	
CIRCLING	1820-1	572 (600-1)	2080-2 1/2 832 (900-2 1/2)	2080-2 3/4 832 (900-2 3/4)

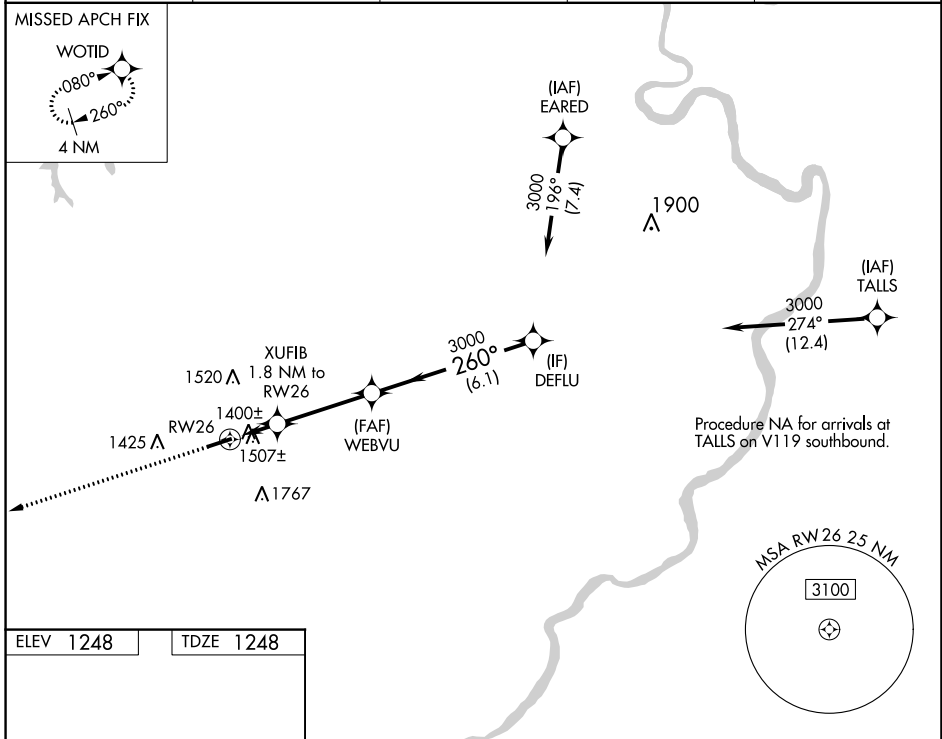
FAF to MAP 5.4 NM					
Knots	60	90	120	150	180
Min:Sec	5:24	3:36	2:42	2:10	1:48

WAAS CH 53327 W26A	APP CRS 260°	Rwy Idg 4801 TDZE 1248 Apt Elev 1248
--	------------------------	---

RNAV (GPS) RWY 26

PITTSBURGH/BUTLER RGNL (BTP)

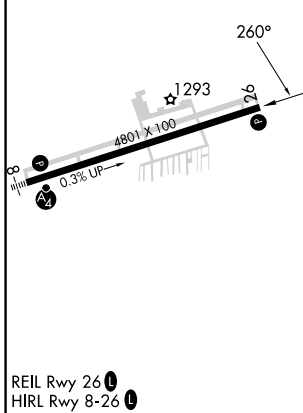
RNP APCH - GPS.		MISSED APPROACH: Climb to 3000 direct WOTID and hold.		
Rwy 26 helicopter visibility reduction below 3/4 SM NA.				
AWOS-3PT 121.450	PITTSBURGH APP CON 124.75 338.2	CLNC DEL 119.4	UNICOM 123.05	CTAF 123.05



NE-4, 22 FEB 2024 to 21 MAR 2024

NE-4, 22 FEB 2024 to 21 MAR 2024

ELEV 1248	TDZE 1248
------------------	------------------



WOTID VGSIs and descent angles not coincident (VGSi Angle 3.50/TCH 52).	XUFIB 1.8 NM to RWY 26 WEBVU		DEFLU	
	RWY 26 1.8 NM	3.6 NM	6.1 NM	3000
CATEGORY	A	B	C	D
LP MDA	1660-1	412 (500-1)	1660-1½	412 (500-1½)
LNAV MDA	1760-1	512 (600-1)	1760-1¾	512 (600-1¾)
CIRCLING	1820-1	572 (600-1)	2080-2½ 832 (900-2½)	2080-2¾ 832 (900-2¾)

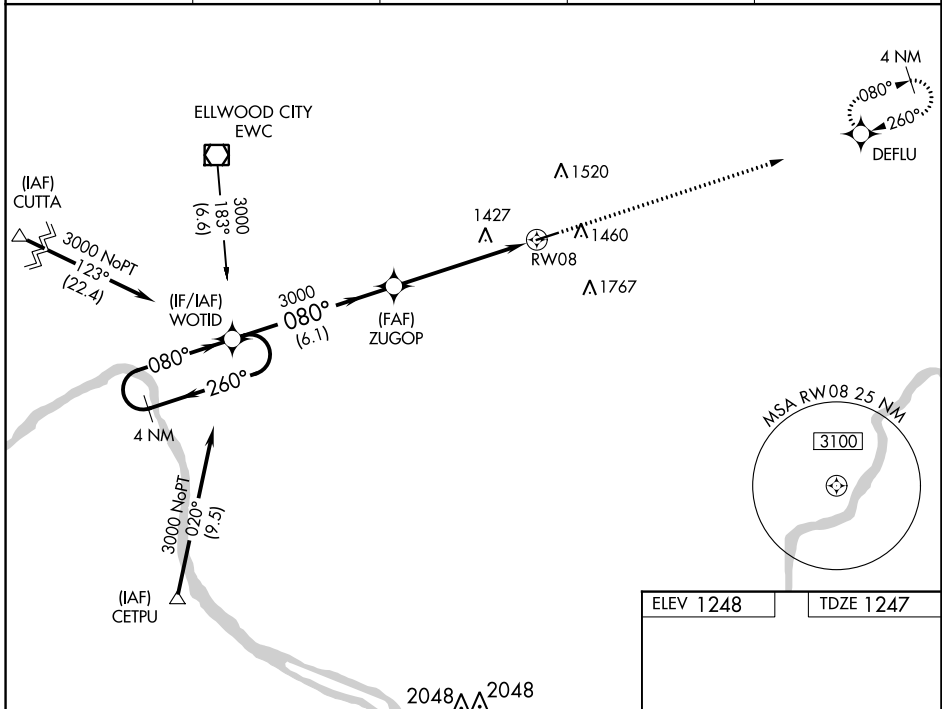
WAAS CH 56502 W08A	APP CRS 080°	Rwy Idg TDZE Apt Elev	4801 1247 1248
--	------------------------	-----------------------------	---

RNAV (GPS) RWY 8

PITTSBURGH/BUTLER RGNL (BTP)

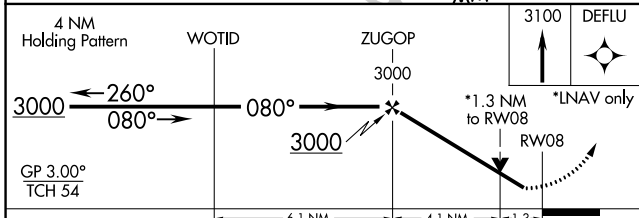
<p>⚠ For uncompensated Baro-VNAV systems, LNAV/VNAV NA below -17°C (2°F) or above 54°C (130°F). Rwy 8 helicopter visibility reduction below 3/4 SM NA. DME/DME RNP-0.3 NA.</p>	<p>MALSF</p>	<p>MISSED APPROACH: Climb to 3100 direct DEFLU and hold.</p>
---	--------------	--

AWOS-3PT 121.450	PITTSBURGH APP CON 124.75 338.2	CLNC DEL 119.4	UNICOM 123.05	CTAF 123.05
----------------------------	---	--------------------------	-------------------------	-----------------------

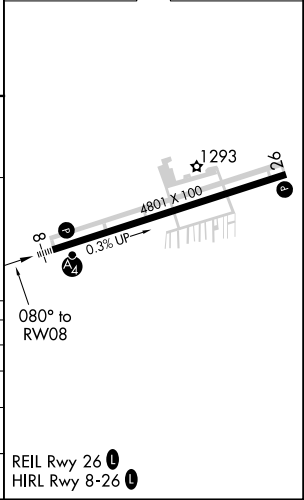


NE-4, 22 FEB 2024 to 21 MAR 2024

NE-4, 22 FEB 2024 to 21 MAR 2024



ELEV 1248	TDZE 1247
-----------	-----------



CATEGORY	A	B	C	D
LPV DA	1497-3/4 250 (300-3/4)			
LNAV/VNAV DA	1604-1 357 (400-1)			
LNAV MDA	1680-3/4 433 (500-3/4)		1680-1 433 (500-1)	
CIRCLING	1820-1 572 (600-1)		2080-2 1/2 832 (900-2 1/2)	2080-2 3/4 832 (900-2 3/4)