

LOC/DME I-BXM <b>109.3</b> Chan 30	APP CRS <b>012°</b>	Rwy Idg <b>8000</b> TDZE <b>63</b> Apt Elev <b>75</b>
--	------------------------	---

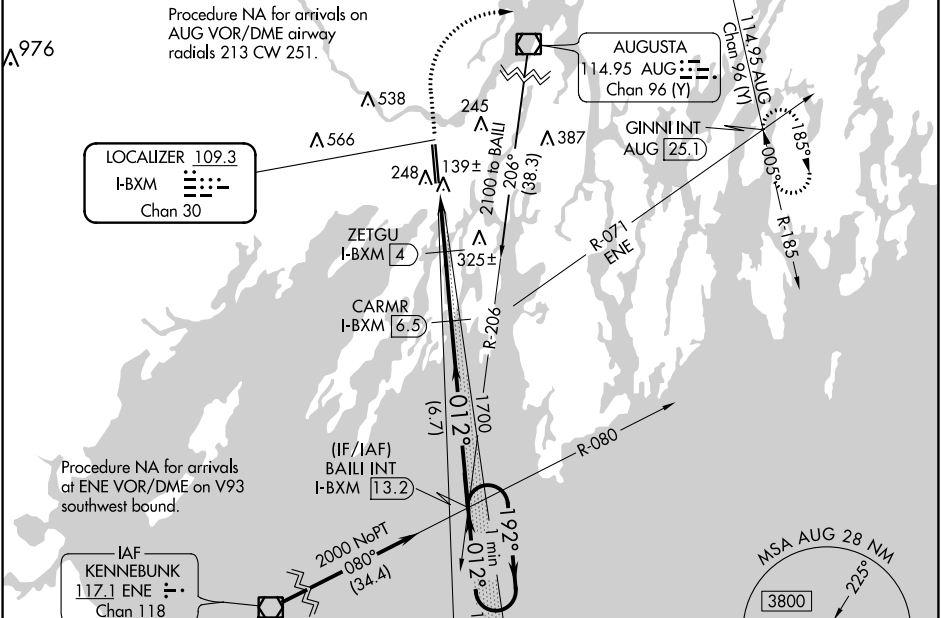
# ILS or LOC RWY 1R

BRUNSWICK EXEC (BXM)

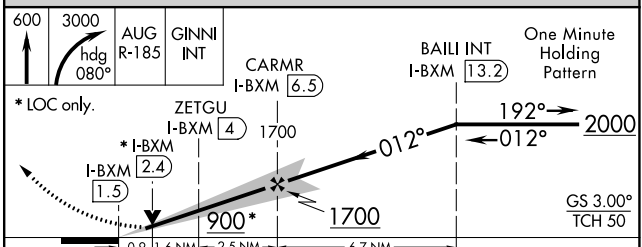
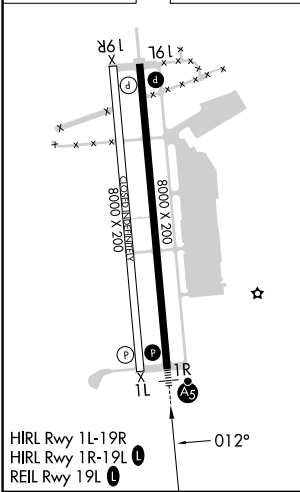
**NA** DME required. VDP NA when using Portland altimeter setting. When local altimeter setting not received, use Portland altimeter setting and increase S-ILS 1R DA to 314; increase all MDA 60 feet; increase S-LOC 1R Cats C/D visibilities 1/2 SM and Circling Cat C/D visibilities 1/4 SM.

**MALSR**  
**AS** MISSED APPROACH: Climb to 600 then climbing right turn to 3000 on heading 080° and AUG VOR/DME R-185 to GINNI INT/AUG 25.1 DME and hold.

AWOS-AV <b>134.875</b>	PORTLAND APP CON ★ (112°-292°) <b>119.75 269.35</b> (293°-111°) <b>120.4 299.2</b>	CLNC DEL <b>123.65</b>	UNICOM <b>122.725 (CTAF)</b>
---------------------------	---	---------------------------	---------------------------------



ELEV	75	TDZE	63
------	----	------	----



CATEGORY	A	B	C	D
S-ILS 1R		263-1/2	200 (200-1/2)	
S-LOC 1R		400-1/2	337 (400-1/2)	
<b>C</b> CIRCLING	560-1	485 (500-1)	840-2 1/4 765 (800-2 1/4)	840-2 1/2 765 (800-2 1/2)

NE-1, 22 FEB 2024 to 21 MAR 2024

NE-1, 22 FEB 2024 to 21 MAR 2024

WAAS CH <b>72815</b> <b>W19A</b>	APP CRS <b>193°</b>	Rwy ldg TDZE Apt Elev	<b>8000</b> <b>74</b> <b>75</b>
--	------------------------	-----------------------------	---------------------------------------

# RNAV (GPS) RWY 19L

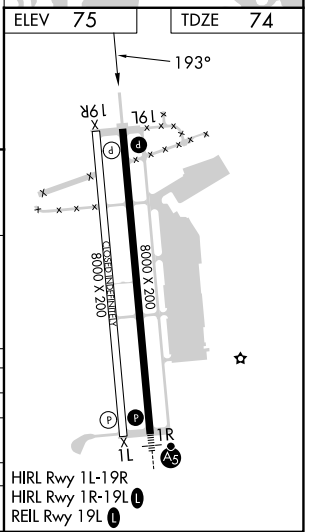
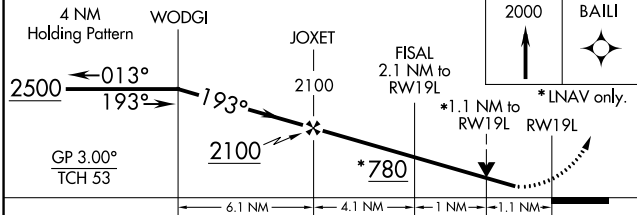
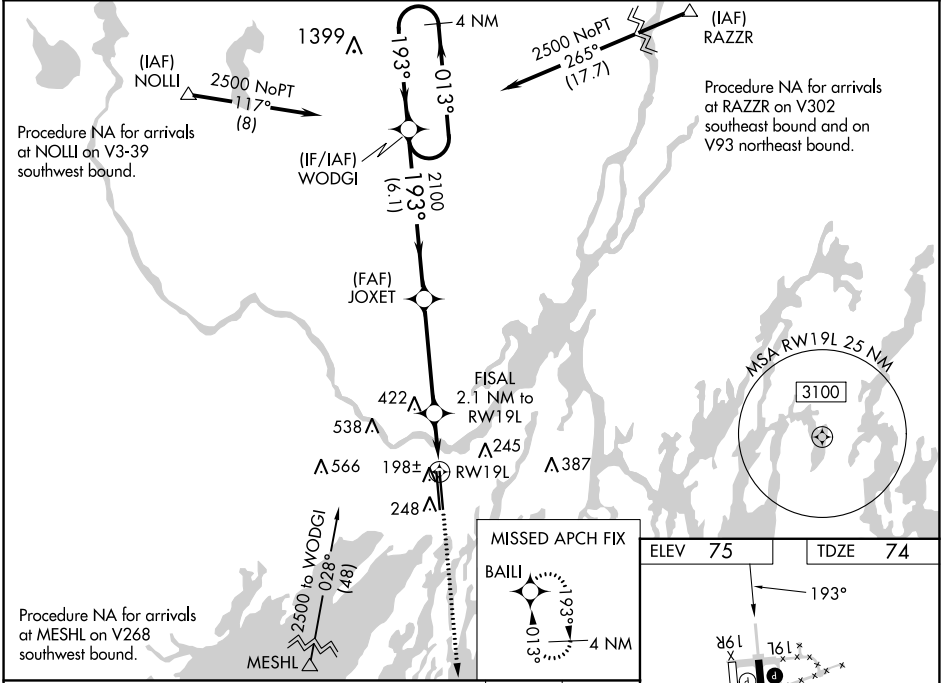
BRUNSWICK EXEC (BXM)

RNP APCH - GPS.

**⚠ NA** For uncompensated Baro-VNAV systems, LNAV/VNAV NA below -15°C or above 43°C. Inop table does not apply to LPV all Cats. Rwy 19L helicopter visibility reduction below 3/4 SM NA. Baro-VNAV and VDP NA with Portland altimeter setting. When local altimeter setting not received, use Portland altimeter setting: increase LPV DA to 382 feet and all visibilities 1/4 SM; increase LNAV/VNAV DA to 410 feet and all visibilities 1/4 SM; increase all MDA 60 feet and LNAV and Circling Cats C/D 1/4 SM.

**MISSED APPROACH:**  
Climb to 2000 direct BAILI and hold.

AWOS-AV <b>134.875</b>	PORTLAND APP CON * (112°-292°) <b>119.75 269.35</b> (293°-111°) <b>120.4 299.2</b>	CLNC DEL <b>123.65</b>	UNICOM <b>122.725 (CTAF)</b>
---------------------------	---	---------------------------	---------------------------------



CATEGORY	A	B	C	D
LPV DA		331-3/4	257 (300-3/4)	
LNAV/VNAV DA		359-7/8	285 (300-7/8)	
LNAV MDA	460-1	386 (400-1)	460-1 1/8	386 (400-1 1/8)
CIRCLING	560-1	485 (500-1)	840-2 1/4 765 (800-2 1/4)	840-2 1/2 765 (800-2 1/2)

NE-1, 22 FEB 2024 to 21 MAR 2024

NE-1, 22 FEB 2024 to 21 MAR 2024

WAAS CH <b>69415</b> <b>W01A</b>	APP CRS <b>013°</b>	Rwy Idg TDZE Apt Elev	<b>8000</b> <b>63</b> <b>75</b>
--	------------------------	-----------------------------	---------------------------------------

# RNAV (GPS) RWY 1R

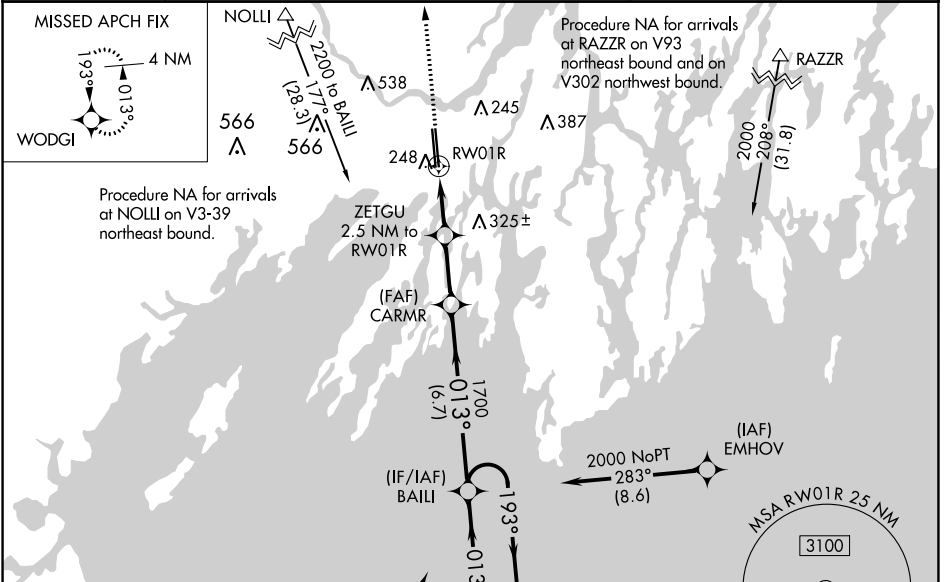
BRUNSWICK EXEC (BXM)

**⚠** Baro-VNAV NA when using Portland altimeter setting. For uncompensated Baro-VNAV systems, LNAV/VNAV NA below -15°C (5°F) or above 54°C (130°F). DME/DME RNP-0.3 NA. VDP NA when using Portland altimeter setting. When local altimeter setting not received, use Portland altimeter setting and increase LPV DA to 314, LNAV/VNAV DA to 461 and all LNAV/VNAV visibilities ¼ SM; increase all MDA 60 feet and LNAV Cat C/D visibilities ¼ SM and Circling Cat C/D visibilities ¼ SM. For Inop ALS when using Portland altimeter setting, increase LNAV Cat C/D visibility to 1 ½ SM.

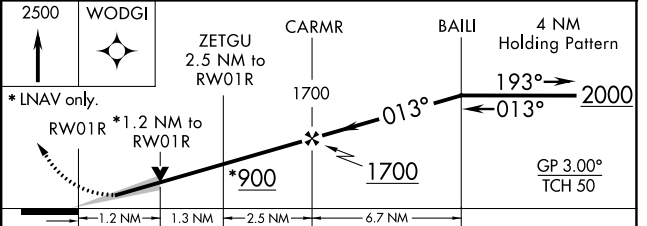
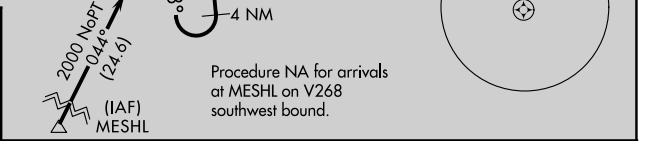
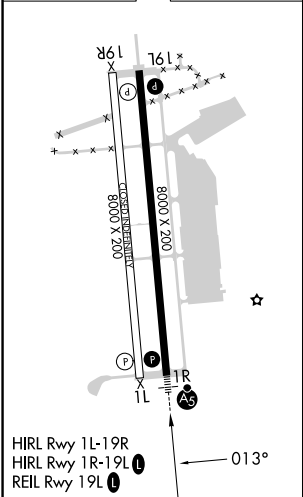


**MISSED APPROACH:**  
Climb to 2500 direct WODGI and hold.

AWOS-AV <b>134.875</b>	PORTLAND APP CON ★ (112°-292°) <b>119.75 269.35</b> (293°-111°) <b>120.4 299.2</b>	CLNC DEL <b>123.65</b>	UNICOM <b>122.725 (CTAF)</b> <b>0</b>
---------------------------	---	---------------------------	--



ELEV 75	TDZE 63
---------	---------



CATEGORY	A	B	C	D
LPV DA		263-½	200 (200-½)	
LNAV/VNAV DA		410-⅝	347 (400-⅝)	
LNAV MDA	500-½	437 (500-½)	500-¾	437 (500-¾)
CIRCLING	560-1	485 (500-1)	840-2¼ 765 (800-2¼)	840-2½ 765 (800-2½)

NE-1, 22 FEB 2024 to 21 MAR 2024

NE-1, 22 FEB 2024 to 21 MAR 2024