

WAAS CH 48835 W31A	APP CRS 306°	Rwy Idg TDZE Apt Elev	6143 4940 4970
--	------------------------	-----------------------------	---

RNAV (GPS) RWY 31

JOHNSON COUNTY (BYG)

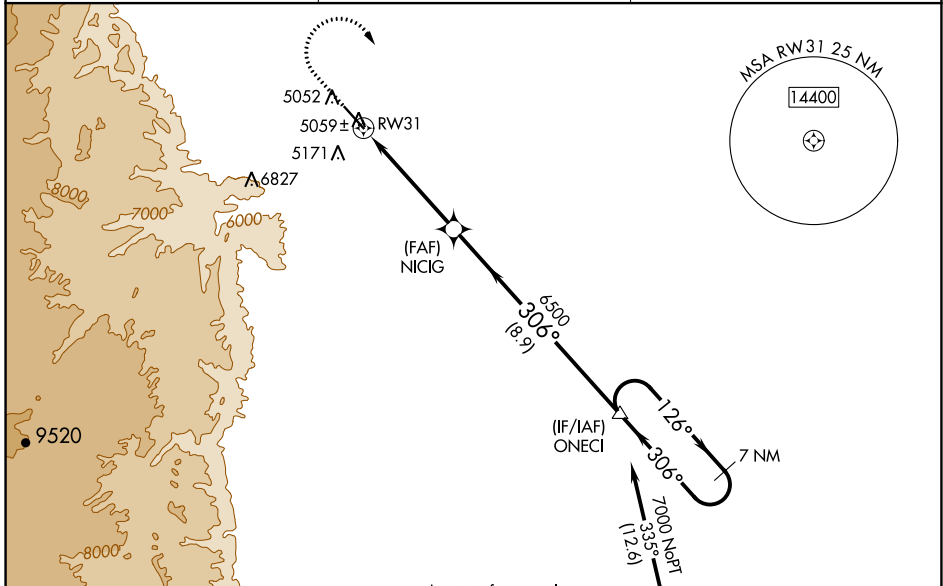
⚠ When Rwy 13 VGSI inop, Circling Rwy 13 NA at night. Baro-VNAV and VDP NA when using Sheridan altimeter setting. For uncompensated Baro-VNAV systems, LNAV/VNAV NA below -27°C (-16°F) or above 48°C (120°F). Circling NA southwest of Rwy 13-31. DME/DME RNP-0.3 NA. When local altimeter setting not received, use Sheridan altimeter setting and increase all DA/MDA 200 feet; increase all LPV, LNAV/VNAV, and all LNAV and Circling Cat C/D visibilities ¾ mile.

MISSED APPROACH: Climb to 6000, then climbing right turn to 7000 direct ONECI and hold.

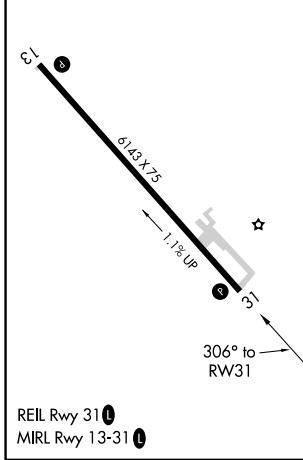
ASOS
135.425

SALT LAKE CENTER
127.75 351.9

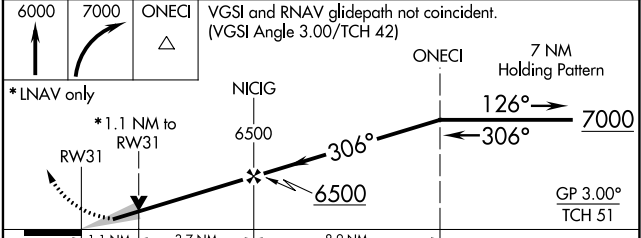
UNICOM
122.8 (CTAF) 0



ELEV 4970	TDZE 4940
-----------	-----------



Procedure NA for arrivals at CZI VOR/DME on airway radials 256 CW 048.



CATEGORY	A	B	C	D
LPV DA		5190-¾	250 (300-¾)	
LNAV/VNAV DA		5275-1⅛	335 (400-1⅛)	
LNAV MDA	5320-1	380 (400-1)	5320-1⅛	380 (400-1⅛)
C CIRCLING	5440-1	470 (500-1)	5460-1½ 490 (500-1½)	5600-2 630 (700-2)

NW-1, 22 FEB 2024 to 21 MAR 2024

NW-1, 22 FEB 2024 to 21 MAR 2024

VOR/DME CZI 117.3 Chan 120	APP CRS 319°	Rwy Idg 6143 TDZE 4940 Apt Elev 4970
--	------------------------	---

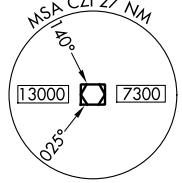
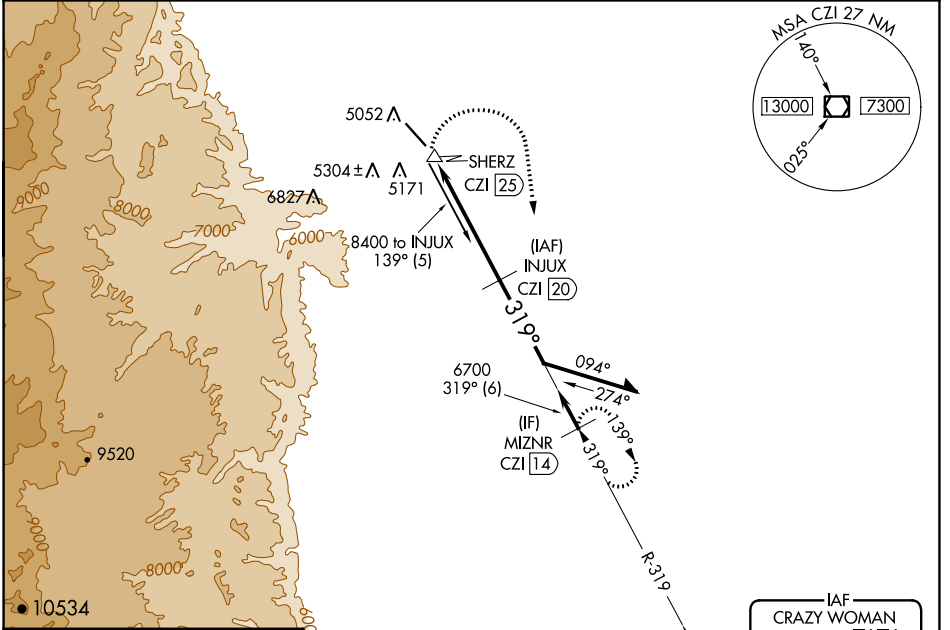
VOR/DME RWY 31

JOHNSON COUNTY (BYG)

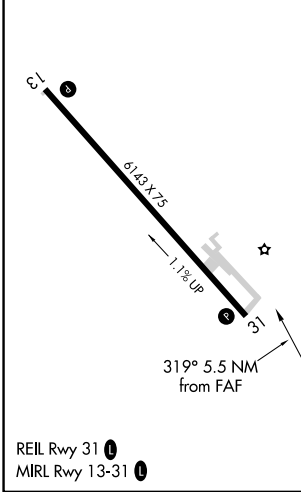
⚠ Visibility reduction by helicopters NA. If local altimeter setting not received, use Sheridan altimeter setting and increase all MDAs 600 feet. When VGSI inoperative, procedure NA at night. Circling NA southwest of Rwy 13-31.

MISSED APPROACH: Climbing right turn to 7600 via heading 160° and CZI VOR/DME R-319 to MIZNR/14 DME and hold.

ASOS 135.425	SALT LAKE CENTER 127.75 351.9	UNICOM 122.8 (CTAF) 0
------------------------	---	---------------------------------

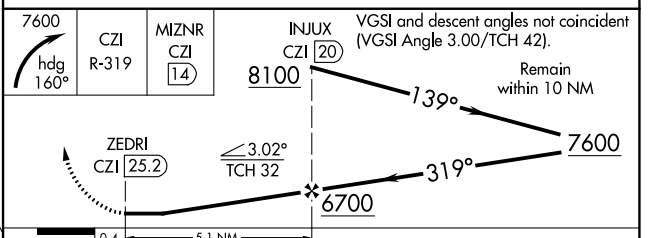


ELEV 4970	TDZE 4940
-----------	-----------



Procedure NA for arrivals at CZI VOR/DME via V247 southbound.

IAF CRAZY WOMAN
117.3 CZI [---]
Chan 120



CATEGORY	A	B	C	D
S-31	5680-1 740 (800-1)	5680-1¼ 740 (800-1¼)	5680-2¼ 740 (800-2¼)	5680-2½ 740 (800-2½)
C CIRCLING	5680-1 710 (800-1)	5680-1¼ 710 (800-1¼)	5680-2¼ 710 (800-2¼)	5680-2½ 710 (800-2½)

NW-1, 22 FEB 2024 to 21 MAR 2024

NW-1, 22 FEB 2024 to 21 MAR 2024