

| | | |
|---------------------------|------------------------|-------------------------|
| LOC I-CDR 110.9 | APP CRS 028° | Rwy Idg 5211 |
| | | TDZE 3294 |
| | | Apt Elev 3298 |


ILS or LOC RWY 3

CHADRON MUNI (CDR)

ADF required.

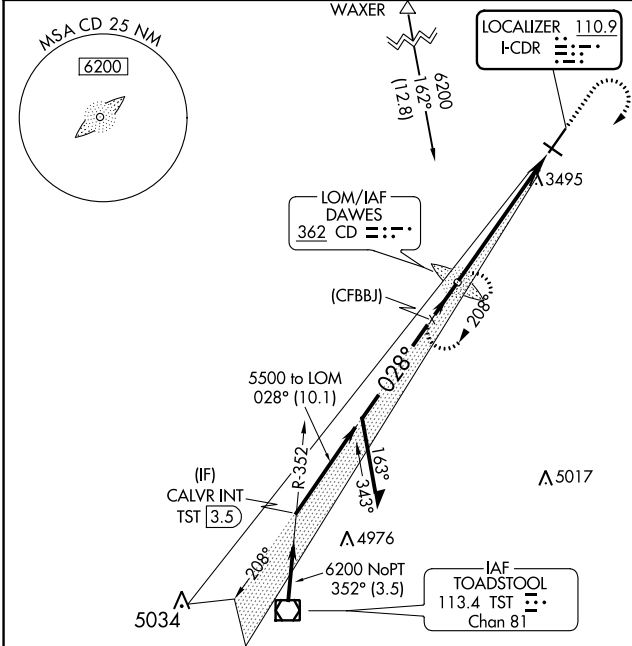
⚠ When local altimeter setting not received, use Pine Ridge altimeter setting and increase S-ILS 3 DA to 3564 feet; increase all MDAs 80 feet and S-LOC 3 visibility Cat C/D ¼ SM, and Circling visibility Cat B/C ⅓ SM. Inop table does not apply to S-ILS 3 all Cats, S-LOC 3 Cats A and B. For inop ALS, increase S-LOC 3 Cats C and D visibility to 1⅓ SM. When using Pine Ridge altimeter setting, inop table does not apply to S-ILS 3 all Cats, S-LOC 3 Cat A. For inop ALS when using Pine Ridge altimeter setting, increase S-LOC 3 Cat B visibility to 1¼ SM, Cats C and D visibility to 2 SM.

MALSRL

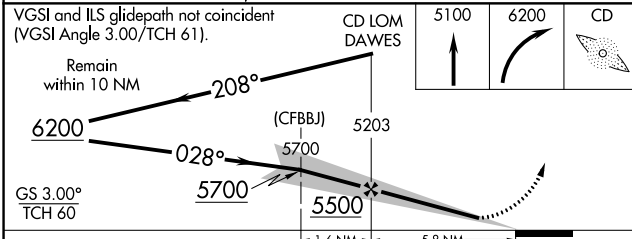


MISSED APPROACH:
Climb to 5100 then climbing right turn to 6200 direct DAWES LOM and hold.

| | | |
|-----------------------|--------------------------------------|---------------------------------|
| ASOS 118.05 | DENVER CENTER 127.95 338.2 | UNICOM 122.8 (CTAF) 1 |
|-----------------------|--------------------------------------|---------------------------------|



| | |
|--------------------|-----------|
| ELEV 3298 | TDZE 3294 |
| REIL Rwy 21 and 30 | |
| MIRL Rwy 12-30 | |
| HIRL Rwy 3-21 | |



5998 X 100 0.3% Up

4400 X 75

3363

028° 5.8 NM from FAF

| | | | | | |
|-------------------|------|------|------|------|------|
| FAF to MAP 5.8 NM | | | | | |
| Knots | 60 | 90 | 120 | 150 | 180 |
| Min:Sec | 5:48 | 3:52 | 2:54 | 2:19 | 1:56 |

| CATEGORY | A | B | C | D |
|----------|--------------------|-------------|---------|------------------------|
| S-ILS 3 | 3494-1 200 (200-1) | | | |
| S-LOC 3 | 3960-1 | 666 (700-1) | 3960-1½ | 666 (700-1½) |
| CIRCLING | 3960-1 | 662 (700-1) | 3960-1⅞ | 4220-3 922 (1000-3) |

NC-2, 22 FEB 2024 to 21 MAR 2024

NC-2, 22 FEB 2024 to 21 MAR 2024

| | | |
|-----------------------|------------------------|-------------------------|
| NDB HIN 275 | APP CRS 194° | Rwy Idg 5500 |
| | | TDZE 3286 |
| | | Apt Elev 3298 |

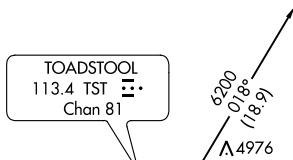
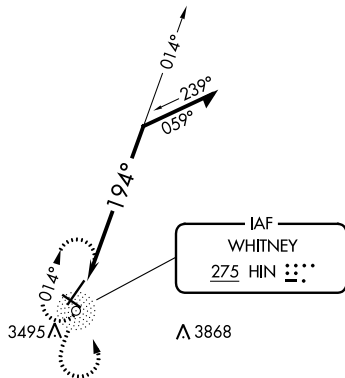
NDB RWY 21

CHADRON MUNI (CDR)

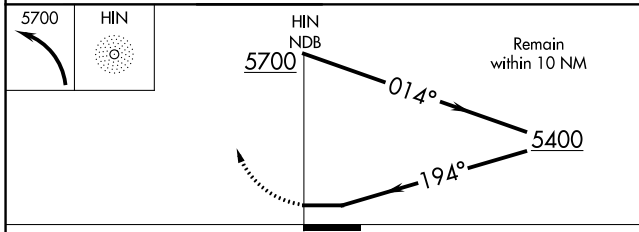
⚠ When local altimeter setting not received, use Pine Ridge altimeter setting and increase all MDA 80 feet, increase S-21 Cats C and D visibility ½ SM, and increase Circling Cat C visibility ¼ SM.

MISSED APPROACH: Climbing left turn to 5700 in HIN NDB holding pattern.

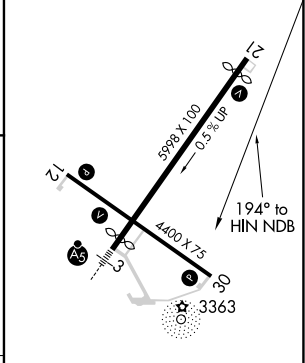
| | | |
|-----------------------|--------------------------------------|---------------------------------|
| ASOS 118.05 | DENVER CENTER 127.95 338.2 | UNICOM 122.8 (CTAF) 1 |
|-----------------------|--------------------------------------|---------------------------------|



5017△ △4700±



| | |
|-----------|--------------------|
| ELEV 3298 | D TDZE 3286 |
|-----------|--------------------|



| CATEGORY | A | B | C | D |
|----------|-----------------------|-------------------------|-----------------------|------------------------|
| S-21 | 4020-1 734 (800-1) | 4020-1¼ 734 (800-1¼) | 4020-2 | 734 (800-2) |
| CIRCLING | 4020-1¼ | 722 (800-1¼) | 4020-2 722 (800-2) | 4220-3 922 (1000-3) |

HIRL Rwy 3-21 **1**
MIRL Rwy 12-30 **1**
REIL Rwys 21 and 30 **1**

NC-2, 22 FEB 2024 to 21 MAR 2024

NC-2, 22 FEB 2024 to 21 MAR 2024

| | | | |
|--|------------------------|-----------------------------|---|
| WAAS CH 56523 W12A | APP CRS 118° | Rwy Idg TDZE Apt Elev | 4400 3294 3298 |
|--|------------------------|-----------------------------|---|

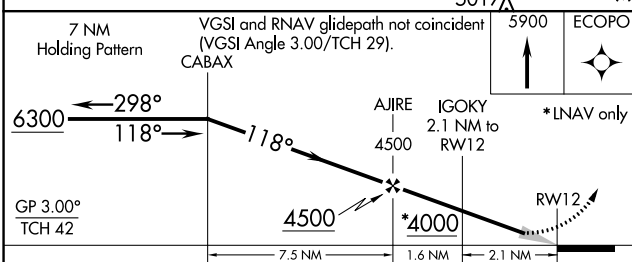
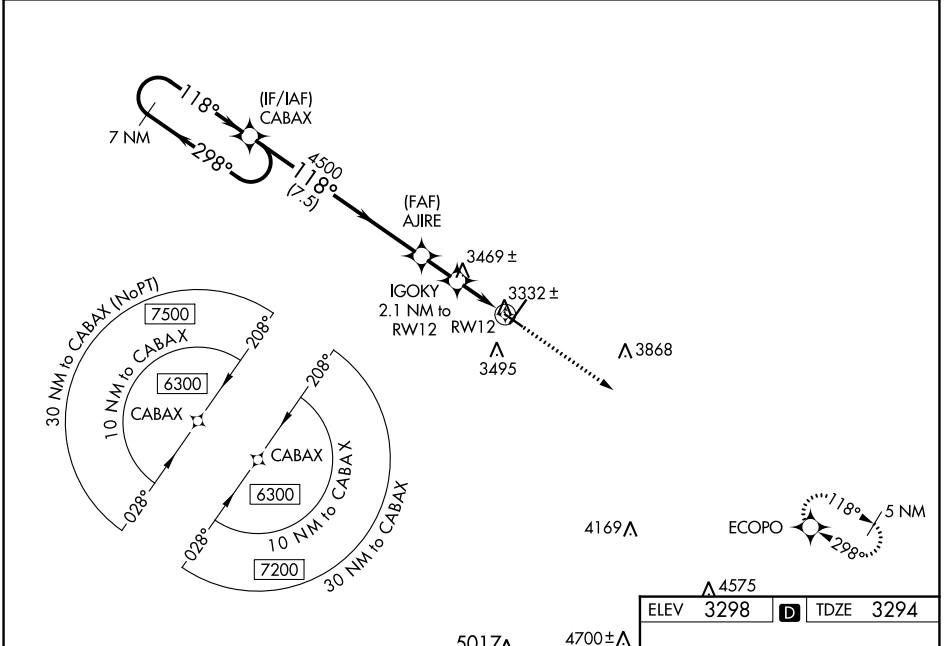
RNAV (GPS) RWY 12

CHADRON MUNI (CDR)

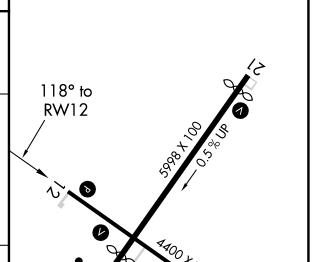
⚠ Baro-VNAV NA when using Pine Ridge altimeter setting. For uncompensated Baro-VNAV systems, LNAV/VNAV NA below -21°C (-5°F) or above 54°C (130°F). DME/DME RNP-0.3 NA. When local altimeter setting not received, use Pine Ridge altimeter setting and increase all DA 70 feet and all MDA 80 feet; increase LPV all Cats visibility 1/8 mile, LNAV/VNAV all Cats visibility 1/4 mile, and Circling Cat C visibility 1/4 mile.

MISSED APPROACH:
Climb to 5900 direct ECOPO and hold.

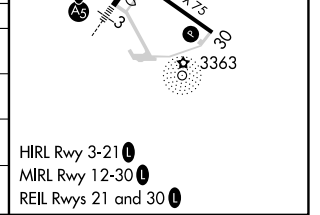
| | | |
|-----------------------|--------------------------------------|---------------------------------|
| ASOS 118.05 | DENVER CENTER 127.95 338.2 | UNICOM 122.8 (CTAF) 0 |
|-----------------------|--------------------------------------|---------------------------------|



| | | | |
|------|-------------|------|-------------|
| ELEV | 3298 | TDZE | 3294 |
|------|-------------|------|-------------|



| CATEGORY | A | B | C | D |
|--------------|-----------------------|-----------------------|-------------------------|----|
| LPV DA | 3544-1 250 (300-1) | | | NA |
| LNAV/VNAV DA | 3719-1½ 425 (500-1½) | | | NA |
| LNAV MDA | 3720-1 | 426 (500-1) | 3720-1¼ 426 (500-1¼) | NA |
| CIRCLING | 3820-1 522 (600-1) | 3920-1 622 (700-1) | 3920-1¾ 622 (700-1¾) | NA |



NC-2, 22 FEB 2024 to 21 MAR 2024

NC-2, 22 FEB 2024 to 21 MAR 2024

| | | | |
|--|------------------------|-----------------------------|---|
| WAAS CH 90523 W21A | APP CRS 208° | Rwy Idg TDZE Apt Elev | 5500 3286 3298 |
|--|------------------------|-----------------------------|---|

RNAV (GPS) RWY 21

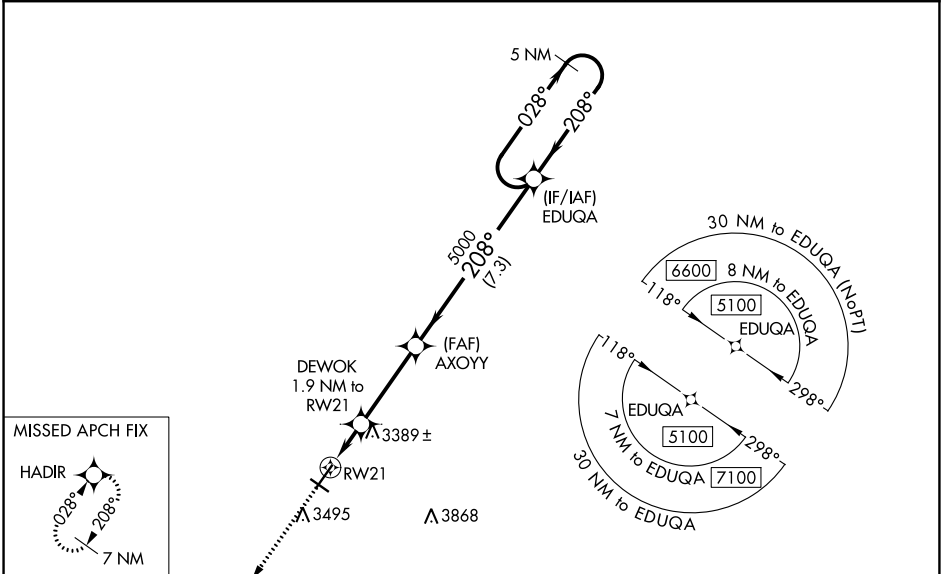
CHADRON MUNI (CDR)

RNP APCH-GPS.

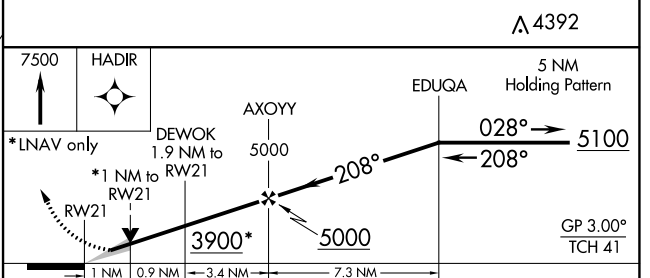
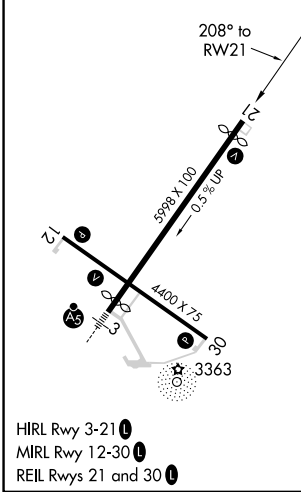
⚠ Baro-VNAV NA when using Pine Ridge altimeter setting. For uncompensated Baro-VNAV systems, LNAV/VNAV NA below -21°C or above 54°C. VDP NA with Pine Ridge altimeter setting. When local altimeter setting not received, use Pine Ridge altimeter setting and increase LPV DA to 3606 feet, LNAV/VNAV DA to 3754 feet and all MDA 80 feet; increase LNAV/VNAV visibility ¼ SM all Cats, LNAV Cats C and D visibility ¼ SM, and Circling Cat C visibility ¼ SM.

MISSED APPROACH: Climb to 7500 direct HADIR and hold, continue climb-in-hold to 7500.

| | | |
|-----------------------|--------------------------------------|--|
| ASOS 118.05 | DENVER CENTER 127.95 338.2 | UNICOM 122.8 (CTAF) 📞 |
|-----------------------|--------------------------------------|--|



| | | |
|------------------|----------|------------------|
| ELEV 3298 | D | TDZE 3286 |
|------------------|----------|------------------|



| CATEGORY | A | B | C | D |
|--------------|-----------------------|-----------------------|-------------------------|------------------------|
| LPV DA | | 3536-1 | 250 (300-1) | |
| LNAV/VNAV DA | | 3684-1½ | 398 (400-1½) | |
| LNAV MDA | | 3640-1 | 354 (400-1) | |
| CIRCLING | 3820-1 522 (600-1) | 3920-1 622 (700-1) | 3920-1¼ 622 (700-1¼) | 4220-3 922 (1000-3) |

NC-2, 22 FEB 2024 to 21 MAR 2024

NC-2, 22 FEB 2024 to 21 MAR 2024

| | | |
|--|------------------------|---|
| WAAS CH 65615 W03A | APP CRS 028° | Rwy ldg 5211 TDZE 3294 Apt Elev 3298 |
|--|------------------------|---|

RNAV (GPS) RWY 3

CHADRON MUNI (CDR)

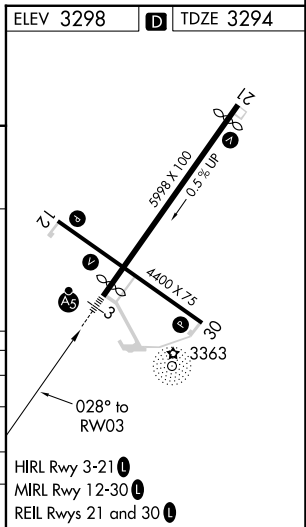
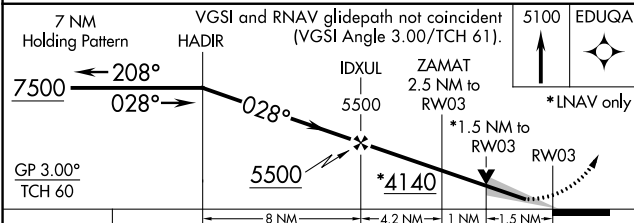
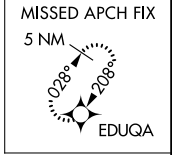
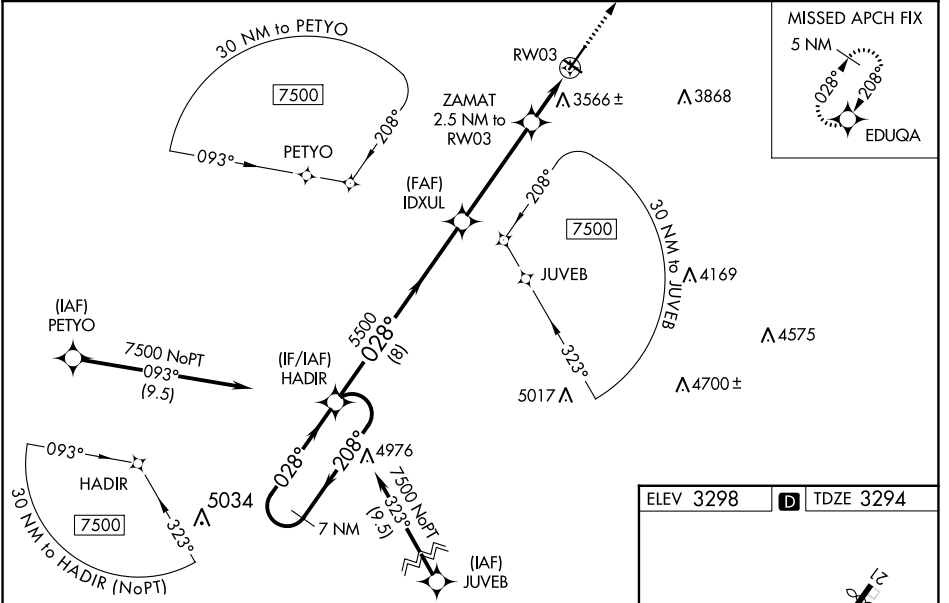
RNP APCH-GPS.

⚠ Baro-VNAV NA when using Pine Ridge altimeter setting. For uncompensated Baro-VNAV systems, LNAV/VNAV NA below -21°C or above 54°C. For inop ALS, when using Pine Ridge altimeter setting, increase LNAV/VNAV all Cats visibility to 1½ SM, LNAV Cats C and D visibility to 1¾ SM. VDP NA with Pine Ridge altimeter setting. When local altimeter setting not received, use Pine Ridge altimeter setting and increase LPV DA to 3564 feet, increase LNAV/VNAV DA to 3972 feet and all visibilities ½ SM. Increase all MDAs 80 feet and LNAV visibility Cat C/D ¾ SM, and Circling visibility Cat C ¼ SM. Inop table does not apply to LPV all Cats and LNAV Cats A/B. For inop ALS increase LNAV/VNAV all Cats visibility to 1¾. When using Pine Ridge altimeter setting, inop table does not apply to LPV all Cats and LNAV Cats A/B.

MALSRL

MISSED APPROACH:
Climb to 5100 direct EDUQA and hold.

| | | |
|-----------------------|--------------------------------------|-------------------------------|
| ASOS 118.05 | DENVER CENTER 127.95 338.2 | UNICOM 122.8 (CTAF) |
|-----------------------|--------------------------------------|-------------------------------|



| CATEGORY | A | B | C | D |
|--------------|-----------------------|-----------------------|-------------------------|------------------------|
| LPV DA | | 3494-1 | 200 (200-1) | |
| LNAV/VNAV DA | | 3902-1¾ | 608 (700-1¾) | |
| LNAV MDA | | 3820-1 | 526 (600-1) | |
| CIRCLING | 3820-1 522 (600-1) | 3920-1 622 (700-1) | 3920-1¾ 622 (700-1¾) | 4220-3 922 (1000-3) |

NC-2, 22 FEB 2024 to 21 MAR 2024

NC-2, 22 FEB 2024 to 21 MAR 2024

| | | |
|--|------------------------|---|
| WAAS CH 69523 W30A | APP CRS 298° | Rwy Idg 4400 TDZE 3290 Apt Elev 3298 |
|--|------------------------|---|

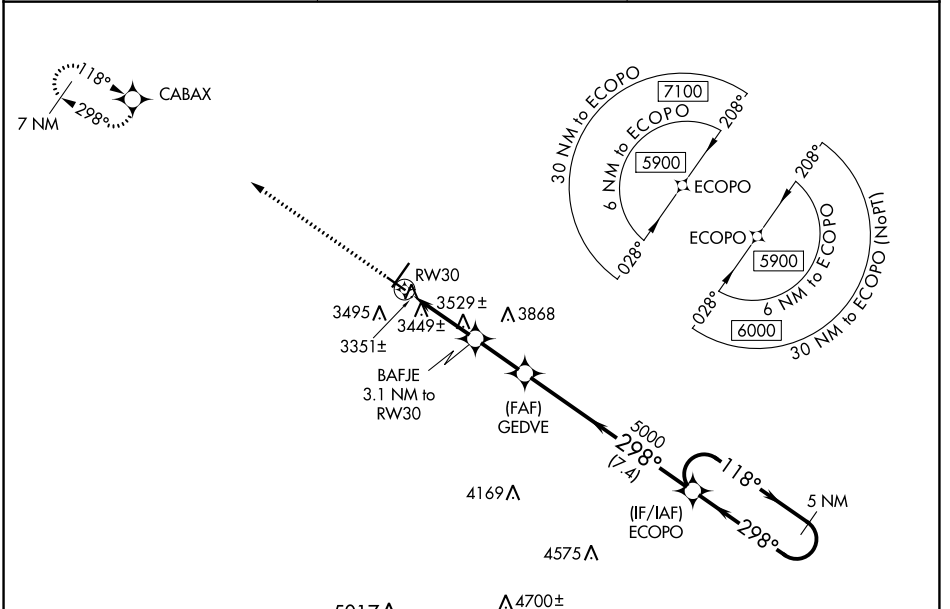
RNAV (GPS) RWY 30

CHADRON MUNI (CDR)

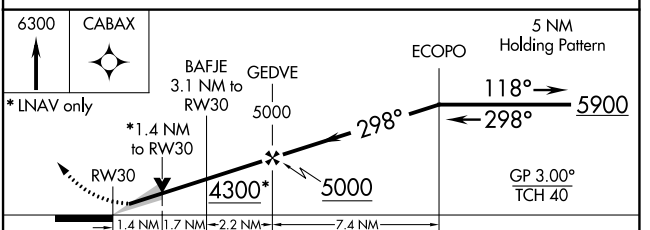
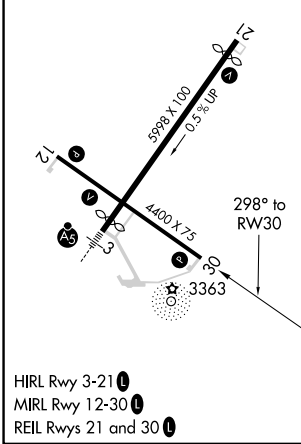
⚠ For uncompensated Baro-VNAV systems, LNAV/VNAV NA below -21°C (-5°F) or above 54°C (130°F). DME/DME RNP-0.3 NA. When local altimeter setting not received, use Pine Ridge altimeter setting and increase all DA 70 feet and all MDA 80 feet; increase LPV all Cats visibility 1/8 mile, LNAV/VNAV all Cats visibility 1/4 mile, and LNAV and Circling Cat C visibility 1/4 mile. Baro-VNAV and VDP NA with Pine Ridge altimeter setting.

MISSED APPROACH:
Climb to 6300 direct CABAX and hold.

| | | |
|-----------------------|--------------------------------------|-------------------------------|
| ASOS 118.05 | DENVER CENTER 127.95 338.2 | UNICOM 122.8 (CTAF) |
|-----------------------|--------------------------------------|-------------------------------|



| | | |
|-----------|----------|-----------|
| ELEV 3298 | D | TDZE 3290 |
|-----------|----------|-----------|



| CATEGORY | A | B | C | D |
|--------------|-----------------------|-----------------------|-------------------------------|----|
| LPV DA | 3540-1 | | 250 (300-1) | NA |
| LNAV/VNAV DA | 3767-1 5/8 | | 477 (500-1 5/8) | NA |
| LNAV MDA | 3780-1 | 490 (500-1) | 3780-1 3/8 490 (500-1 3/8) | NA |
| CIRCLING | 3820-1 522 (600-1) | 3920-1 622 (700-1) | 3920-1 3/4 622 (700-1 3/4) | NA |

NC-2, 22 FEB 2024 to 21 MAR 2024

NC-2, 22 FEB 2024 to 21 MAR 2024