

RNAV (GPS) RWY 23

APCH CRS	Rwy Idg	11,597
228°	TDZE	241
	Arprt Elev	241

AL-447 (USAF)

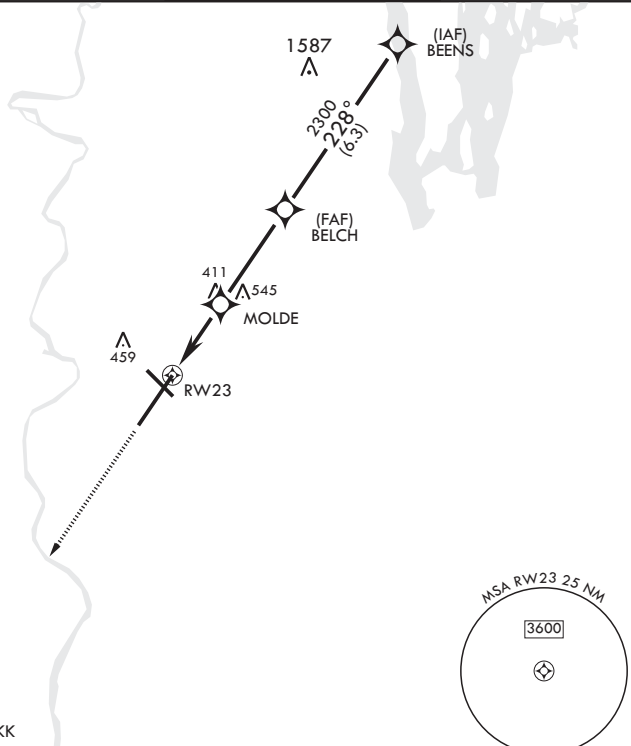
WESTOVER ARB METROPOLITAN (KCEF)

RNP APCH.	ALSF-1	MISSED APPROACH: Climb to 1000, then climbing left turn to 3000 direct HERKK and hold.
DME/DME RNP-0.3 NA.		
* When ALS inop, increase vis to 1 3/8 miles.		

ATIS* 127.525	BRADLEY APP CON/DEP CON 125.35 281.5	TOWER* 134.85 (CTAF) 0 348.75	GND CON 118.35 275.8
------------------	---	----------------------------------	-------------------------

** When ALS inop, increase CAT AB RVR to 55, vis to 1 mile; CAT CDE vis to 1 3/8 miles.
*** Circling not authorized from Rwy 23 clockwise to Rwy 33.

For uncompensated Baro-VNAV systems, Procedure NA below -15°C (5°F) or above 54°C (130°F).

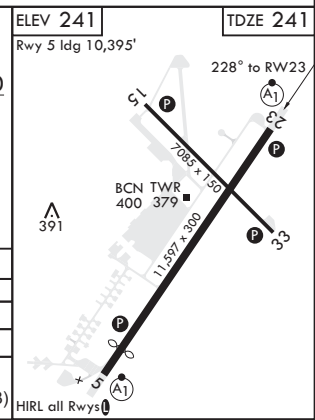
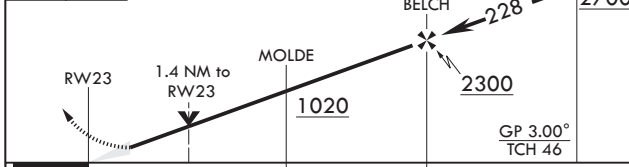


NE-1, 22 FEB 2024 to 21 MAR 2024

NE-1, 22 FEB 2024 to 21 MAR 2024

EMERG SAFE ALT 100 NM 6400

3000	HERKK	VGSI and RNAV glidepath not coincident (VGSI angle 3.00/TCH 64)	BEENS	ELEV 241	TDZE 241
				Rwy 5 Idg 10,395'	



CATEGORY	A	B	C	D	E
LNAV/VNAV DA*	760/55		519	(600-1)	
LNAV MDA**	760/24	519 (600-1/2)	760/55	519	(600-1)
CIRCLING***	760-1 519 (600-1)	780-1 539 (600-1)	840-1 1/2 599 (600-1 1/2)	1060-2 3/4 819 (900-2 3/4)	1080-3 839 (900-3)

RNAV (GPS) RWY 23

RNAV (GPS) RWY 5

APCH CRS 048°	Rwy Idg TDZE Arprt Elev	10,395 237 241
-------------------------	-------------------------------	---

AL-447 (USAF)

WESTOVER ARB METROPOLITAN (KCEF)

RNP APCH.	ALSF-1	MISSED APPROACH: Climb to 900 then climbing left turn to 2700 direct BEENS and hold.
DME/DME RNP-0.3 NA.		
* When ALS inop, increase vis to 1 3/8 miles.		

ATIS* 127.525	BRADLEY APP CON/DEP CON 125.35 281.5	TOWER* 134.85 (CTAF) 0 348.75	GND CON 118.35 275.8
-------------------------	--	---	--------------------------------

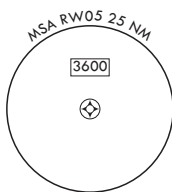
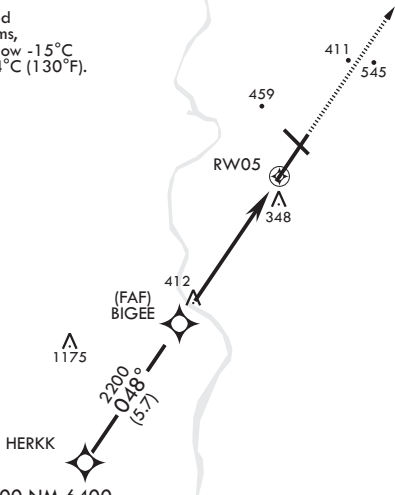
** When ALS inop, increase CAT AB RVR to 55, vis to 1 mile, CAT CDE vis to 1 3/8 miles.

*** Circling not authorized all CAT acft from Rwy 23 clockwise to Rwy 33.

1549

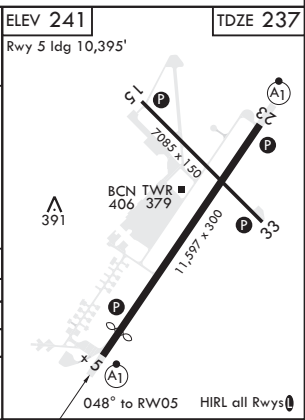
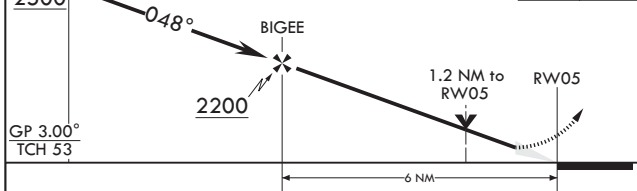
LNAV visibility reduction by Helicopters NA.

For uncompensated Baro-VNAV systems, Procedure NA below -15°C (5°F) or above 54°C (130°F).



EMERG SAFE ALT 100 NM 6400

HERKK	VGSI and RNAV glidepath not coincident (VGSI Angle 3.00/TCH 72).	2700	BEENS	ELEV 241	TDZE 237
GP 3.00°				Rwy 5 Idg 10,395'	



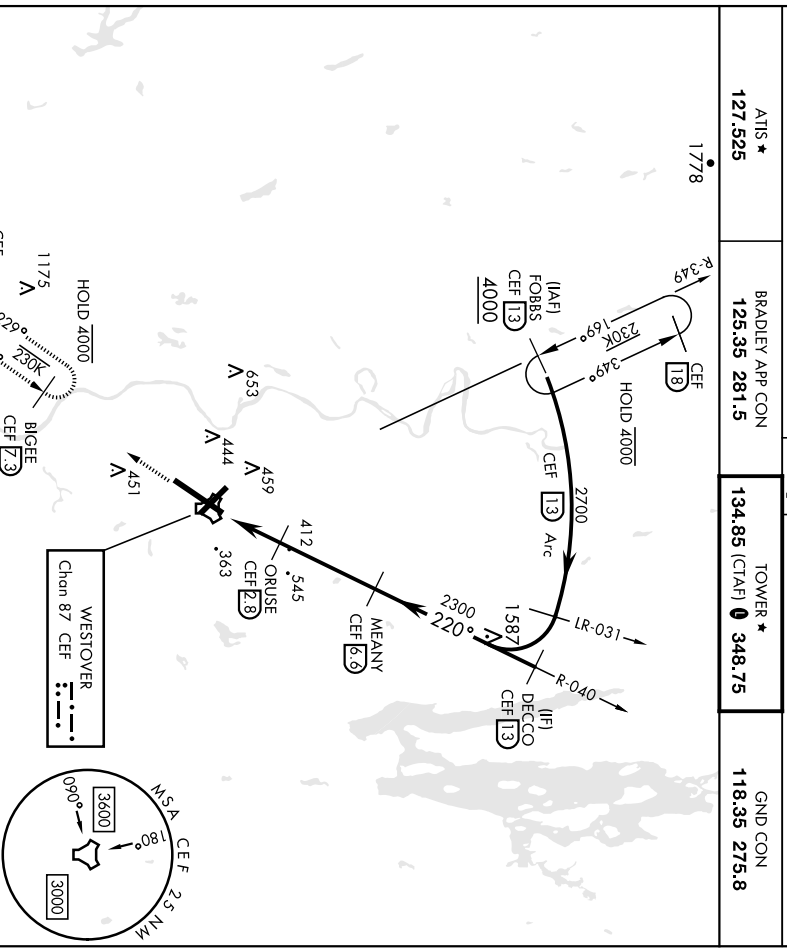
CATEGORY	A	B	C	D	E
LNAV/VNAV DA*	680/45		443	(500-7/8)	
LNAV MDA**	680/24	443 (500-1/2)	680/45	443	(500-7/8)
CIRCLING***	760-1 519 (600-1)	780-1 539 (600-1)	840-1 1/2 599 (600-1 1/2)	1060-2 3/4 819 (900-2 3/4)	1080-3 839 (900-3)

NE-1, 22 FEB 2024 to 21 MAR 2024

NE-1, 22 FEB 2024 to 21 MAR 2024

TACAN RWY 23

TACAN CEF Chon 87	APCH CRS 220°	Rwy Idg TDZE Appl Elev 241	AL-447 [USAF]	WESTOVER ARB METROPOLITAN (KCEF)
<p>▲ When ALS Inop, increase CAT AB RVR to 55 and vis to 1 mile. CAT CDE vis to ½ miles. ** Circling not authorized all CAT both from Rwy 23 clockwise to Rwy 33.</p>		ALSF-1 	MISSED APPROACH: Climb to 2600 on heading 228° to Intercept CEF TACAN R-229 direct BIGEE and hold.	
ATIS ★ 127.525	BRADLEY APP CON 125.35 281.5	TOWER ★ 134.85 (CTAF) 348.75	GND CON 118.35 275.8	



NE-1, 22 FEB 2024 to 21 MAR 2024

NE-1, 22 FEB 2024 to 21 MAR 2024

2600 hdg R-229 228°		VGS1 and descent angles not coincident		DECCO R-040	
TACAN (E18)		ORUSE (E28)		MEANY (E69)	
WISAS (E09)		1080		2700	
D.4		2 NM		3.8 NM	
A		B		C	
D		E			
CATEGORY	A	B	C	D	E
S-23 *	760/24 519 (600-½)	780-1	840-1½	1060-2¾	1080-3
** CIRCLING	519 (600-1)	539 (600-1)	599 (600-1½)	819 (900-2¾)	839 (900-3)
SPRINGFIELD/CHICOPPEE MASSACHUSETTS		42° 12' N - 72° 32' W		WESTOVER ARB METROPOLITAN (KCEF)	
Archt 4 19MAY22					

TACAN RWY 23

