

WAAS CH 63107 W17A	APP CRS 175°	Rwy Idg TDZE Apt Elev	4201 1500 1500
---------------------------------	------------------------	-----------------------------	---

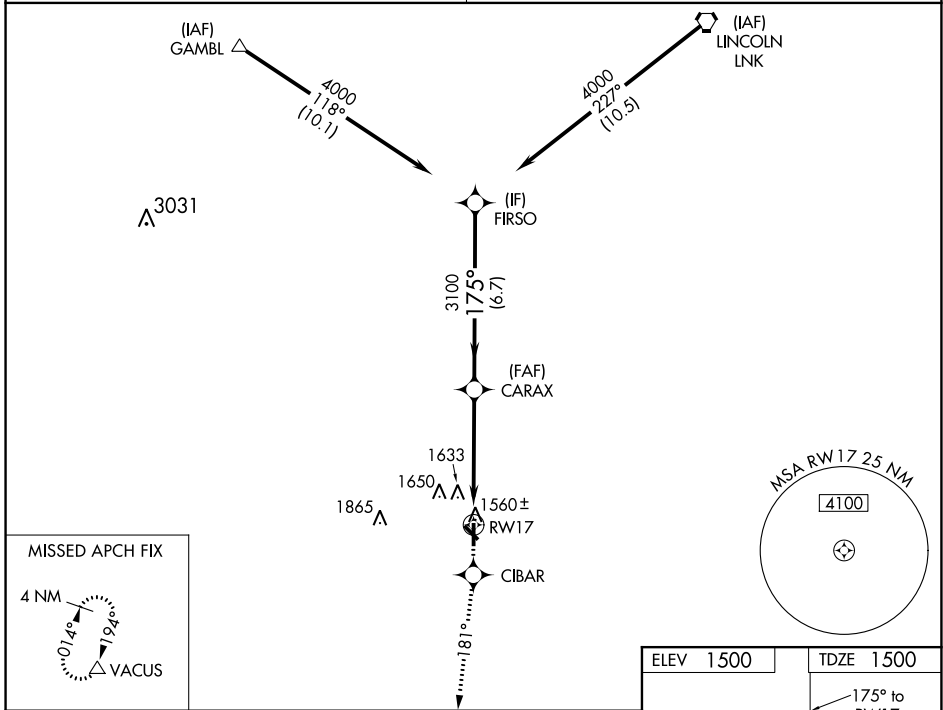
RNAV (GPS) RWY 17

CRETE MUNI (CEK)

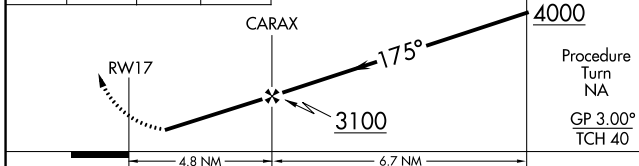
NA Baro-VNAV NA. DME/DME RNP-0.3 NA. Visibility reduction by helicopters NA. Use Lincoln altimeter setting; when not received, use Beatrice altimeter setting.

MISSED APPROACH: Climb to 4000 direct CIBAR and via 181° track to VACUS and hold, continue climb-in-hold to 4000.

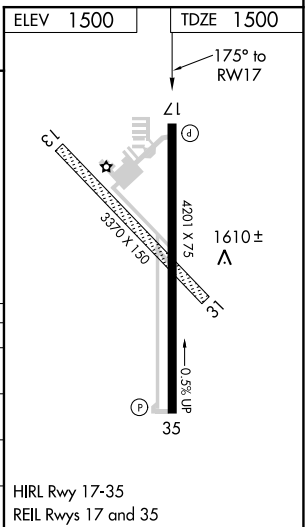
OMAHA APP CON 124.0 270.3	UNICOM 122.8 (CTAF)
-------------------------------------	-------------------------------



4000	CIBAR	tr 181°	VACUS	VGSI and RNAV glidepath not coincident (VGSI Angle 3.00/TCH 40).	FIRSO
------	-------	---------	-------	--	-------



CATEGORY	A	B	C	D
LPV DA	1875-1¼	375 (400-1¼)		NA
LNAV/VNAV DA	2051-2	551 (600-2)		NA
LNAV MDA	2080-1	580 (600-1)		NA
CIRCLING	2140-1	640 (700-1)		NA



NC-2, 09 SEP 2021 to 07 OCT 2021

NC-2, 09 SEP 2021 to 07 OCT 2021

WAAS CH 77708 W35A	APP CRS 355°	Rwy Idg 4201 TDZE 1498 Apt Elev 1500
--	------------------------	---

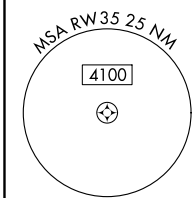
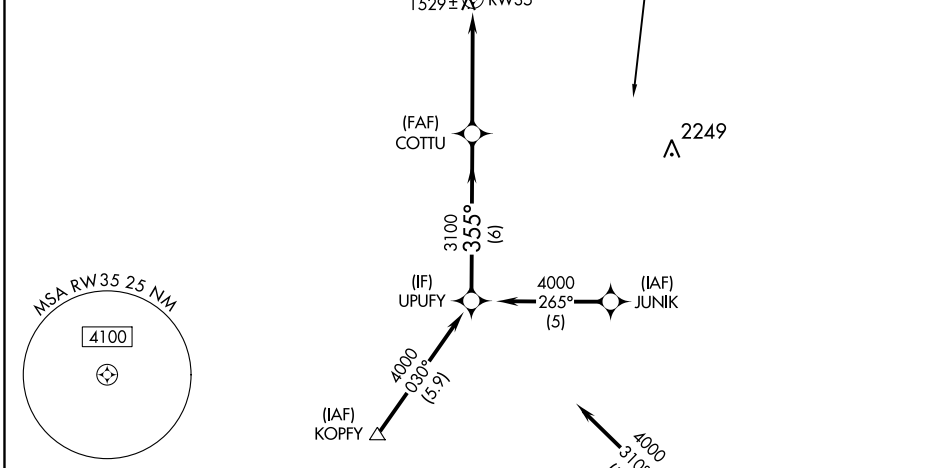
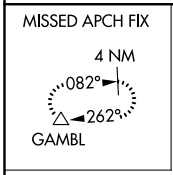
RNAV (GPS) RWY 35

CRETE MUNI (CEK)

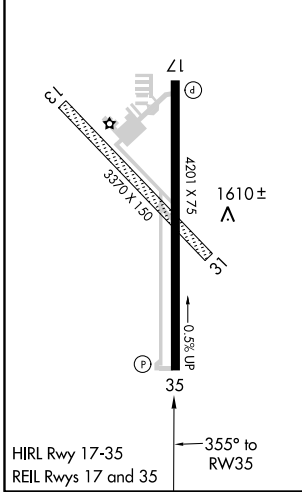
NA Baro-VNAV NA. DME/DME RNP-0.3 NA. Use Lincoln altimeter setting; when not received, use Beatrice altimeter setting. Visibility reduction by helicopters NA.

MISSED APPROACH: Climb to 4000 direct PIYB and via 327° track to GAMBL and hold.

OMAHA APP CON 124.0 270.3	UNICOM 122.8 (CTAF)
-------------------------------------	-------------------------------

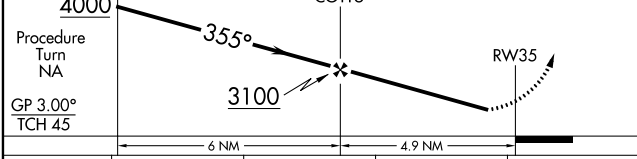


ELEV 1500	TDZE 1498
-----------	-----------



VGSI and RNAV glidepath not coincident (VGSI Angle 3.00/TCH 40).

4000	PIYB	GAMBL
↑	◆	△
	tr	327°



CATEGORY	A	B	C	D
LPV DA	1824-1¼	326 (400-1¼)		NA
LNAV/VNAV DA	1855-1¼	357 (400-1¼)		NA
LNAV MDA	2040-1	542 (600-1)		NA
CIRCLING	2140-1	640 (700-1)		NA

NC-2, 09 SEP 2021 to 07 OCT 2021

NC-2, 09 SEP 2021 to 07 OCT 2021

VORTAC LNK 116.1 Chan 108	APP CRS 196°	Rwy Idg TDZE Apt Elev	4201 1500 1500
---	------------------------	-----------------------------	---

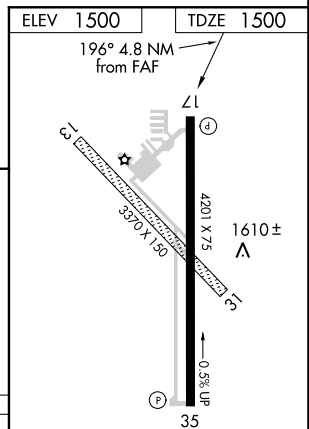
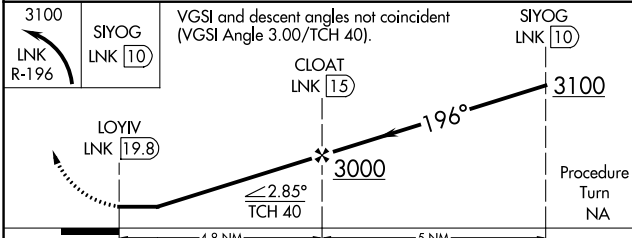
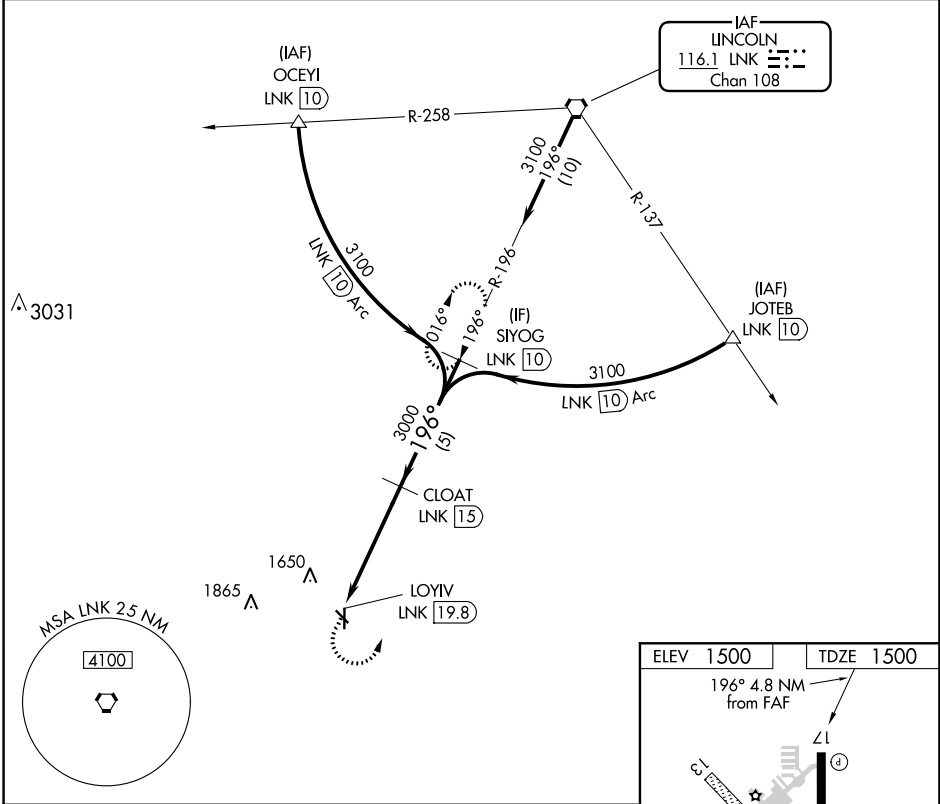
VOR/DME RWY 17

CRETE MUNI (CEK)

⚠ Rwy 17 Straight-in and Circling minimums NA at night. Use Lincoln altimeter setting; when not received, use Beatrice altimeter setting.
⚠ NA Helicopter visibility reduction below 1 SM NA.

MISSED APPROACH: Climbing left turn to 3100 via LNK VORTAC R-196 to SIYOG/10 DME and hold.

OMAHA APP CON 124.0 270.3	UNICOM 122.8 (CTAF)
-------------------------------------	-------------------------------



CATEGORY	A	B	C	D
S-17	2080-1	580 (600-1)		NA
CIRCLING	2140-1	640 (700-1)		NA

HIRL Rwy 17-35
REIL Rws 17 and 35

NC-2, 09 SEP 2021 to 07 OCT 2021

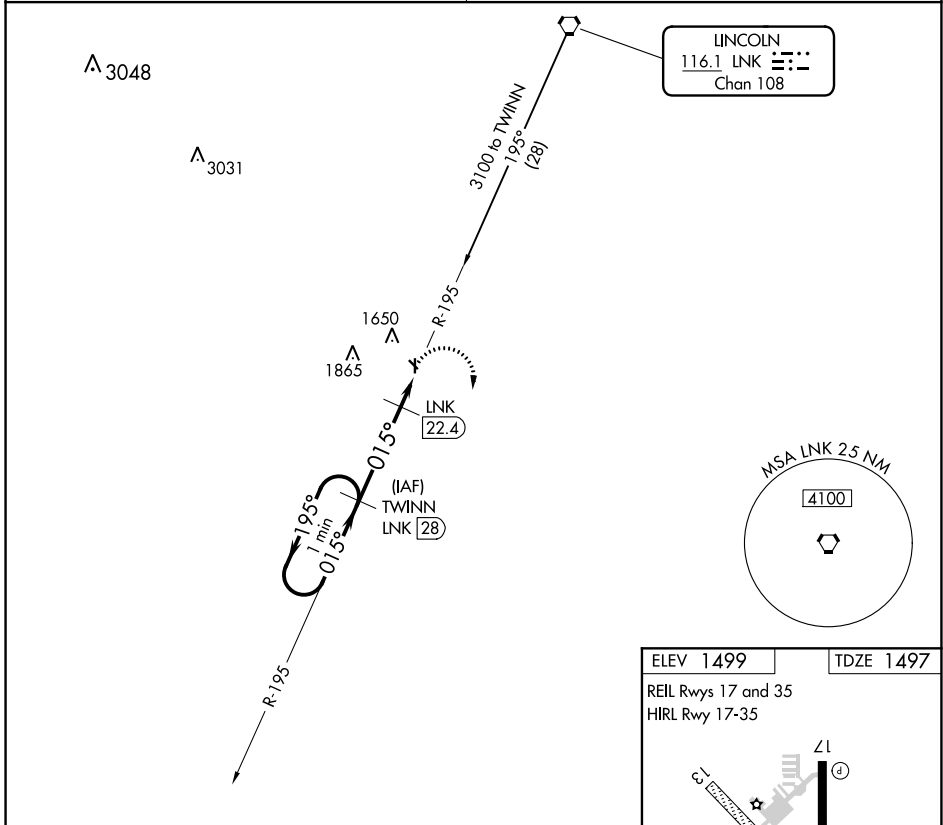
NC-2, 09 SEP 2021 to 07 OCT 2021

VORTAC LNK 116.1 Chan 108	APP CRS 015°	Rwy Idg TDZE 1497 Apt Elev 1499	4201
---	------------------------	---	-------------

VOR/DME RWY 35

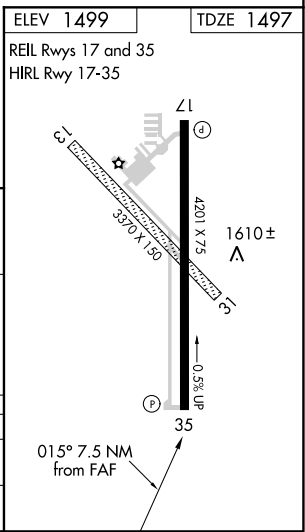
CRETE MUNI (CEK)

<p>NA Use Lincoln altimeter setting; when not received, use Beatrice altimeter setting. Visibility reduction by helicopters NA.</p>	<p>MISSED APPROACH: Climbing right turn to 3100 via LNK R-195 to TWINN/LNK 28 DME and hold.</p>
<p>OMAHA APP CON 124.0 270.3</p>	<p>UNICOM 122.8 (CTAF)</p>



NC-2, 09 SEP 2021 to 07 OCT 2021

NC-2, 09 SEP 2021 to 07 OCT 2021



One Minute Holding Pattern	TWINN LNK 28	3100	TWINN LNK 28
3100	← 195°	→ 015°	
			LNK 22.4
			LNK 20.5
			2140
			5.6 NM
			1.9 NM

CATEGORY	A	B	C	D
S-35	2080-1 583 (600-1)	2080-1¼ 583 (600-1¼)		NA
CIRCLING	2140-1 641 (700-1)	2140-1¼ 641 (700-1¼)		NA