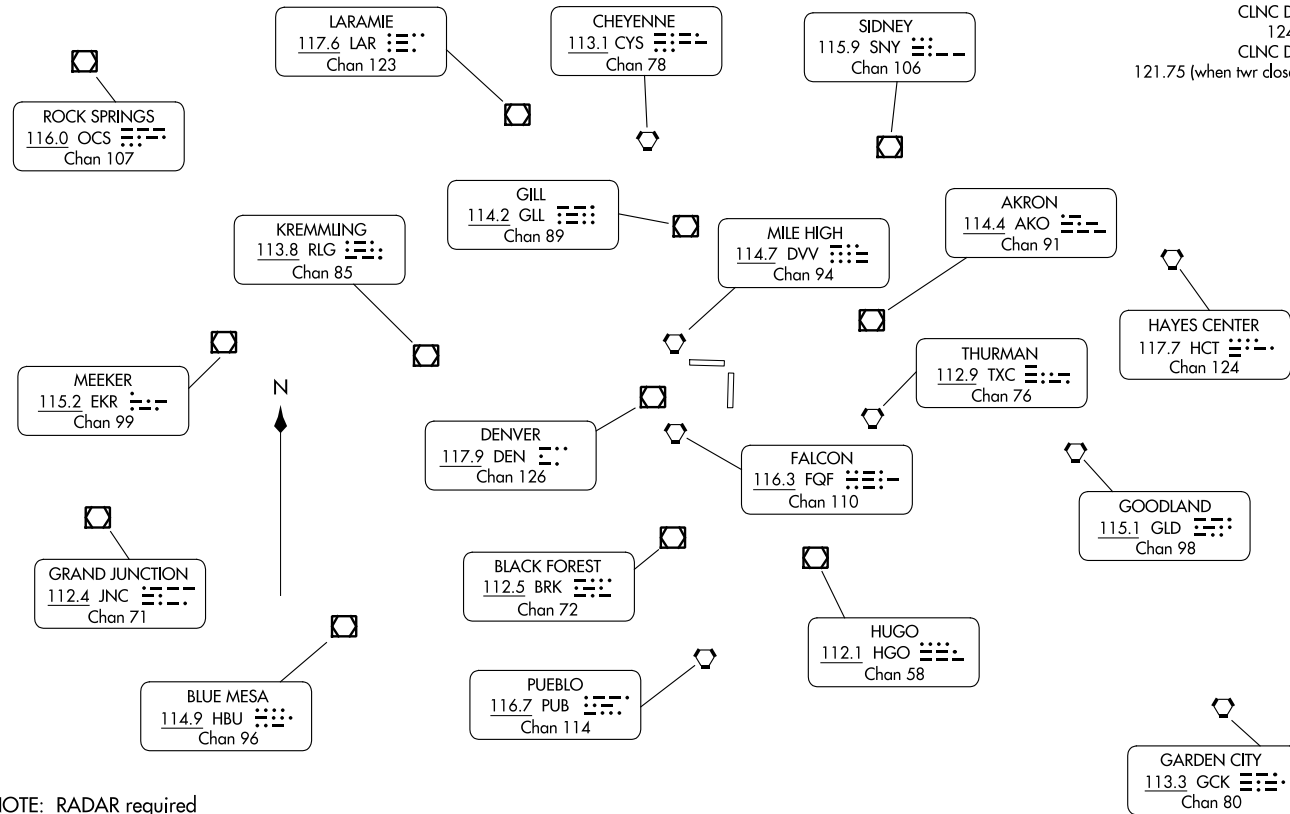


TAKEOFF MINIMUMS

All runways: Standard.

DENVER DEP CON
128.25 371.95
ATIS
119.025
CLNC DEL
124.7
CLNC DEL
121.75 (when twr closed)



NOTE: RADAR required
NOTE: Chart not to scale.

(CONTINUED ON FOLLOWING PAGE)



DEPARTURE ROUTE DESCRIPTION

TAKEOFF ALL RUNWAYS: Fly assigned heading and altitude for RADAR vectors to assigned route. Expect filed altitude 10 minutes after departure.

LOST COMMUNICATIONS: If no transmissions are received within one minute after departure, maintain assigned heading until 7000 feet, then climb to filed altitude via direct DEN VOR/DME, thence via assigned route. If filed altitude is above 10000 feet, cross DEN VOR/DME at or above 11000 feet.

SW-1, 22 FEB 2024 to 21 MAR 2024

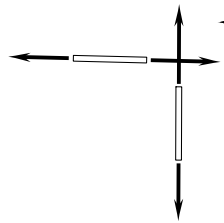
SW-1, 22 FEB 2024 to 21 MAR 2024

ATIS 119.025
CLNC DEL 124.7
CLNC DEL 128.25 (when twr closed)
DENVER DEP CON 128.25 371.95

**TOP ALTITUDE:
FL230**

TAKEOFF MINIMUMS

Rwys 8, 17, 26, 35: Standard.



BAPME
8000

ECHOO

EEONS

EMMYS

EXTAN

EPKEE

POIZN

COTNN

DUUZE

WYNDM

ZIRKL

SHAYK

(NARRATIVE ON FOLLOWING PAGE)

- NOTE: DME/DME/IRU or GPS required.
- NOTE: RNAV 1.
- NOTE: Turbojets only.
- NOTE: RADAR required.
- NOTE: Accelerate to 250K or greater upon reaching 10000.
If slower speed is required to meet crossing restrictions advise CLNC DEL prior to taxi.

NOTE: Chart not to scale.



DEPARTURE ROUTE DESCRIPTION

TAKEOFF RUNWAY 8: Climb on a heading between 312° CW 228° as assigned by ATC. Thence. . . .

TAKEOFF RUNWAY 17: Climb on a heading between 352° CW 229° as assigned by ATC. Thence. . . .

TAKEOFF RUNWAY 26: Climb on a heading between 315° CW 083° as assigned by ATC. Thence. . . .

TAKEOFF RUNWAY 35: Climb on a heading between 313° CW 172° as assigned by ATC. Thence. . . .

. . . . expect RADAR vectors to cross BAPME at 8000 then on track 087° to ECHOO, then on (transition) maintain FL230 or filed lower altitude. Expect higher filed altitude ten minutes after departure.

DUUZE TRANSITION (ECHOO1.DUUZE)

SHAYK TRANSITION (ECHOO1.SHAYK)

WYNDM TRANSITION (ECHOO1.WYNDM)

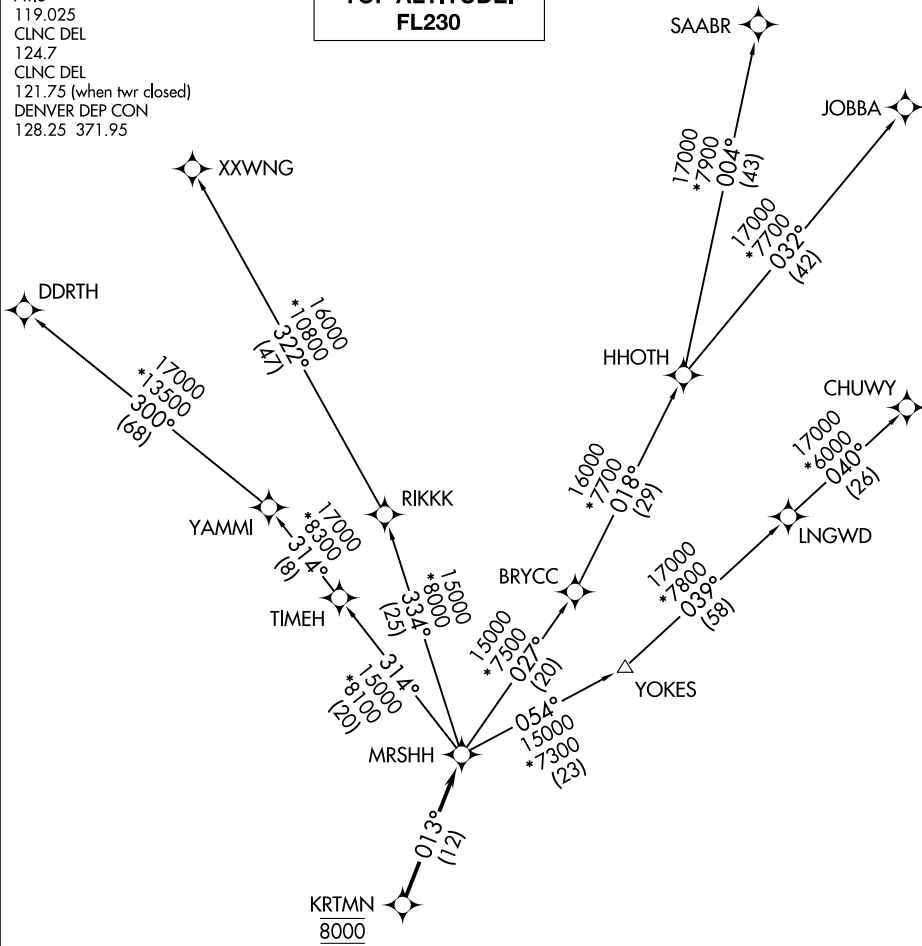
ZIRKL TRANSITION (ECHOO1.ZIRKL)

SW-1, 22 FEB 2024 to 21 MAR 2024

SW-1, 22 FEB 2024 to 21 MAR 2024

**TOP ALTITUDE:
FL230**

ATIS
119.025
CLNC DEL
124.7
CLNC DEL
121.75 (when twr closed)
DENVER DEP CON
128.25 371.95



SW-1, 22 FEB 2024 to 21 MAR 2024

SW-1, 22 FEB 2024 to 21 MAR 2024

TAKEOFF MINIMUMS

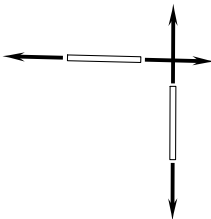
Rwys 8, 17, 26, 35: Standard.

NOTE: DME/DME/IRU or GPS required.

NOTE: RNAV 1.

NOTE: Turbojets only.

NOTE: RADAR required.



NOTE: Chart not to scale.

(NARRATIVE ON FOLLOWING PAGE)



DEPARTURE ROUTE DESCRIPTION

TAKEOFF RUNWAY 8: Climb on a heading between 312° CW 228° as assigned by ATC. Thence. . . .

TAKEOFF RUNWAY 17: Climb on a heading between 352° CW 229° as assigned by ATC. Thence. . . .

TAKEOFF RUNWAY 26: Climb on a heading between 315° CW 083° as assigned by ATC. Thence. . . .

TAKEOFF RUNWAY 35: Climb on a heading between 313° CW 172° as assigned by ATC. Thence. . . .

. . . . expect RADAR vectors to cross KRTMN at 8000 then on track 013° to MRSHH, then on (transition) maintain FL230 or filed lower altitude. Expect higher filed altitude ten minutes after departure.

CHUWY TRANSITION (MRS HH2.CHUWY)

DDRTH TRANSITION (MRS HH2.DDRTH)

JOBBA TRANSITION (MRS HH2.JOBBA)

SAABR TRANSITION (MRS HH2.SAABR)

XXWNG TRANSITION (MRS HH2.XXWNG)

SW-1, 22 FEB 2024 to 21 MAR 2024

SW-1, 22 FEB 2024 to 21 MAR 2024

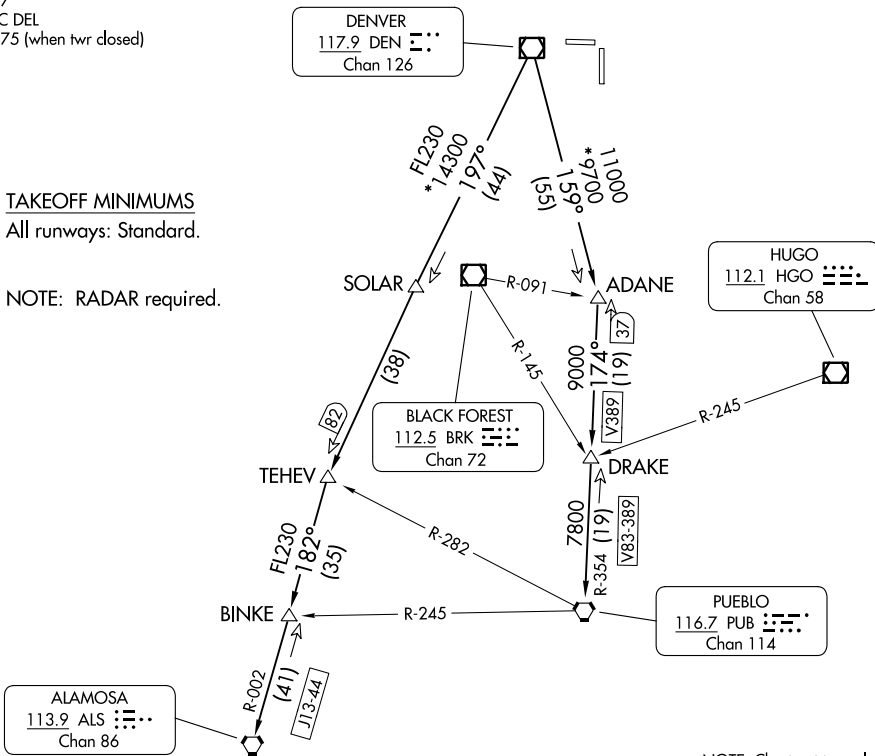
DENVER DEP CON
128.25 371.95
ATIS
119.025
CLNC DEL
124.7
CLNC DEL
121.75 (when twr closed)

**TOP ALTITUDE:
ASSIGNED BY ATC**

TAKEOFF MINIMUMS

All runways: Standard.

NOTE: RADAR required.



NOTE: Chart not to scale.

DEPARTURE ROUTE DESCRIPTION

TAKEOFF ALL RUNWAYS: Fly assigned heading and altitude for RADAR vectors to assigned route. Expect filed altitude 10 minutes after departure.

LOST COMMUNICATIONS: If no transmissions are received within one minute after departure, maintain assigned heading until 7000 feet, then climb to filed altitude via direct DEN VOR/DME, thence via assigned transition. If filed altitude is above 10000 feet, cross DEN VOR/DME at or above 11000 feet.

ALAMOS TRANSITION (PIKES2.ALS): From over DEN VOR/DME on DEN R-197 to TEHEV, then on ALS R-002 to ALS VORTAC.

BINKE TRANSITION (PIKES2.BINKE): From over DEN VOR/DME on DEN R-197 to TEHEV, then on ALS R-002 to BINKE.

PUEBLO TRANSITION (PIKES2.PUB): From over DEN VOR/DME on DEN R-159 to ADANE, then on PUB R-354 to PUB VORTAC.

PLAINS ONE DEPARTURE
(PLAIN1.DEN) 30JAN20

DENVER DEP CON
128.25 371.95
ATIS
119.025
CLNC DEL
124.7
CLNC DEL
121.75 (when twr closed)

**TOP ALTITUDE:
ASSIGNED BY ATC**

AKRON
114.4 AKO
Chan 91

V8
6500
066°
(50)

HAYES CENTER
117.7 HCT
Chan 124

ASHBY

MOCA for MC COOK
transition only.

FL210
*9000
073°
(66)

MC COOK
115.3 MCK
Chan 100

9000
065°
(28)

R-241

EEONS

FL210
*9000
076°
(43)

EMMYS

TEKMY

FL210
*9000
073°
(16)

BELKE

THURMAN
112.9 TXC
Chan 76

8000
087°
(42)

EXTAN

18000
*7000
084°
(56)

CABET

7000
092°
(73)

GOODLAND
115.1 GLD
Chan 98

DENVER
117.9 DEN
Chan 126

EPKEE

FL230
*8100
100°
(88)

V4

WEEDS

FL230
*6300
129°
(94)

GARDEN CITY
113.3 GCK
Chan 80

TAKEOFF MINIMUMS
All runways: Standard.

NOTE: RADAR required.

NOTE: Chart not to scale.

(CONTINUED ON FOLLOWING PAGE)



PLAINS ONE DEPARTURE
(PLAIN1.DEN) 23334

AI-6851 (FAA)

COLORADO AIR AND SPACE PORT (CTFO)
DENVER, COLORADO

COLORADO AIR AND SPACE PORT (CTFO)
DENVER, COLORADO



DEPARTURE ROUTE DESCRIPTION

TAKEOFF ALL RUNWAYS: Fly assigned heading and altitude for RADAR vectors to assigned route. Expect filed altitude 10 minutes after departure.

LOST COMMUNICATIONS: If no transmissions are received within one minute after departure, maintain assigned heading until 7000 feet, then climb to filed altitude via direct DEN VOR/DME, thence via assigned transition. If filed altitude is above 10000 feet, cross DEN VOR/DME at or above 11000 feet.

AKRON TRANSITION (PLAIN1.AKO): From over DEN VOR/DME on DEN R-065 and AKO R-241 to AKO VOR/DME.

ASHBY TRANSITION (PLAIN1.ASHBY): From over DEN VOR/DME on DEN R-065 and AKO R-241 to AKO VOR/DME, then on AKO R-066 and HCT R-250 to ASHBY.

BELKE TRANSITION (PLAIN1.BELKE): From over DEN VOR/DME on DEN R-076 and MCK R-253 to BELKE INT.

CABET TRANSITION (PLAIN1.CABET): From over DEN VOR/DME on DEN R-087 and TXC R-264 to TXC VORTAC, then on TXC R-084 to CABET.

GARDEN CITY TRANSITION (PLAIN1.GCK): From over DEN VOR/DME on DEN R-100 and GCK R-309 to GCK VORTAC.

GOODLAND TRANSITION (PLAIN1.GLD): From over DEN VOR/DME on DEN R-087 and TXC R-264 to TXC VORTAC, then on TXC R-092 and GLD R-273 to GLD VORTAC.

HAYES CENTER TRANSITION (PLAIN1.HCT): From over DEN VOR/DME on DEN R-065 and AKO R-241 to AKO VOR/DME, then on AKO R-066 and HCT R-250 to HCT VORTAC.

MCCOOK TRANSITION (PLAIN1.MCK): From over DEN VOR/DME on DEN R-076 to TEKMY, then on MCK R-253 to MCK VOR/DME.

THURMAN TRANSITION (PLAIN1.TXC): From over DEN VOR/DME on DEN R-087 and TXC R-264 to TXC VORTAC.

WEEDS TRANSITION (PLAIN1.WEEDS): From over DEN VOR/DME on DEN R-100 to WEEDS.

SW-1, 22 FEB 2024 to 21 MAR 2024

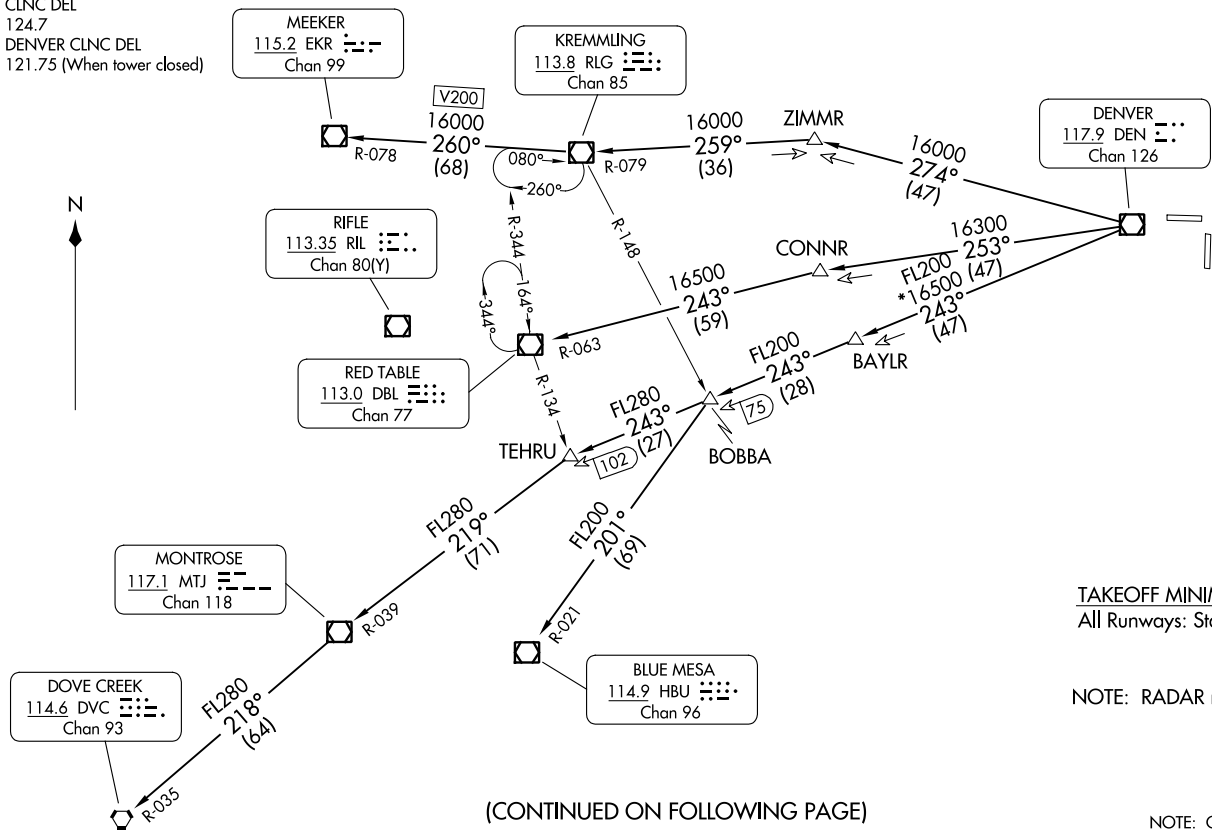
SW-1, 22 FEB 2024 to 21 MAR 2024

ROCKIES FIVE DEPARTURE
(ROCKIS, DEN) 26MAR20
COLORADO AIR AND SPACE PORT (CFO)
DENVER, COLORADO

DENVER DEP CON
128.25 371.95
ATIS
119.025
CLNC DEL
124.7
DENVER CLNC DEL
121.75 (When tower closed)

**TOP ALTITUDE:
ASSIGNED BY ATC**

ROCKIES FIVE DEPARTURE
(ROCKIS, DEN) 23334
AL-6851 (FAA)
COLORADO AIR AND SPACE PORT (CFO)
DENVER, COLORADO



TAKEOFF MINIMUMS
All Runways: Standard.

NOTE: RADAR required.

(CONTINUED ON FOLLOWING PAGE)

NOTE: Chart not to scale.



DEPARTURE ROUTE DESCRIPTION

TAKEOFF ALL RUNWAYS: Fly assigned heading and altitude for RADAR vectors to assigned route. Expect filed altitude 10 minutes after departure.

LOST COMMUNICATIONS: If no transmissions are received within one minute after departure, maintain assigned heading until 7000 feet, then climb to filed altitude direct DEN VOR/DME, then on assigned transition. If filed altitude is above 10000 feet, cross DEN VOR/DME at or above 11000 feet.

BLUE MESA TRANSITION (ROCK15.HBU): From over DEN VOR/DME on DEN R-243 and HBU R-021 to HBU VOR/DME.

DOVE CREEK TRANSITION (ROCK15.DVC): From over DEN VOR/DME on DEN R-243 and MTJ R-039 to MTJ VOR/DME, then on MTJ R-218 and DVC R-035 to DVC VORTAC.

KREMMLING TRANSITION (ROCK15.RLG): From over DEN VOR/DME on DEN R-274 and RLG R-079 to RLG VOR/DME.

MEEKER TRANSITION (ROCK15.EKR): From over DEN VOR/DME on DEN R-274 and RLG R-079 to RLG VOR/DME, then on RLG R-260 and EKR R-078 to EKR VOR/DME.

MONTROSE TRANSITION (ROCK15.MTJ): From over DEN VOR/DME on DEN R-243 and MTJ R-039 to MTJ VOR/DME.

RED TABLE TRANSITION (ROCK15.DBL): From over DEN VOR/DME on DEN R-253 and DBL R-063 to DBL VOR/DME.

SW-1, 22 FEB 2024 to 21 MAR 2024

SW-1, 22 FEB 2024 to 21 MAR 2024

SKYEE ONE DEPARTURE (RNAV)

**TOP ALTITUDE:
FL230**

ATIS
119.025
CLNC DEL
124.7
CLNC DEL
121.75 (when twr closed)
DENVER DEP CON
128.25 371.95

SATLE
8000

SKYEE

SOLAR
14200

SCAGS
14200

SHOJO

STAKR

SMMUR
17000

FRNKE
FL230

SABTH

AZARO

DAAYE

SUDDZ

JOPLN

SLEEK

VRONI

TAKEOFF MINIMUMS

Rwys 8, 17, 26, 35: Standard.

NOTE: DME/DME/IRU or GPS required.

NOTE: RNAV 1.

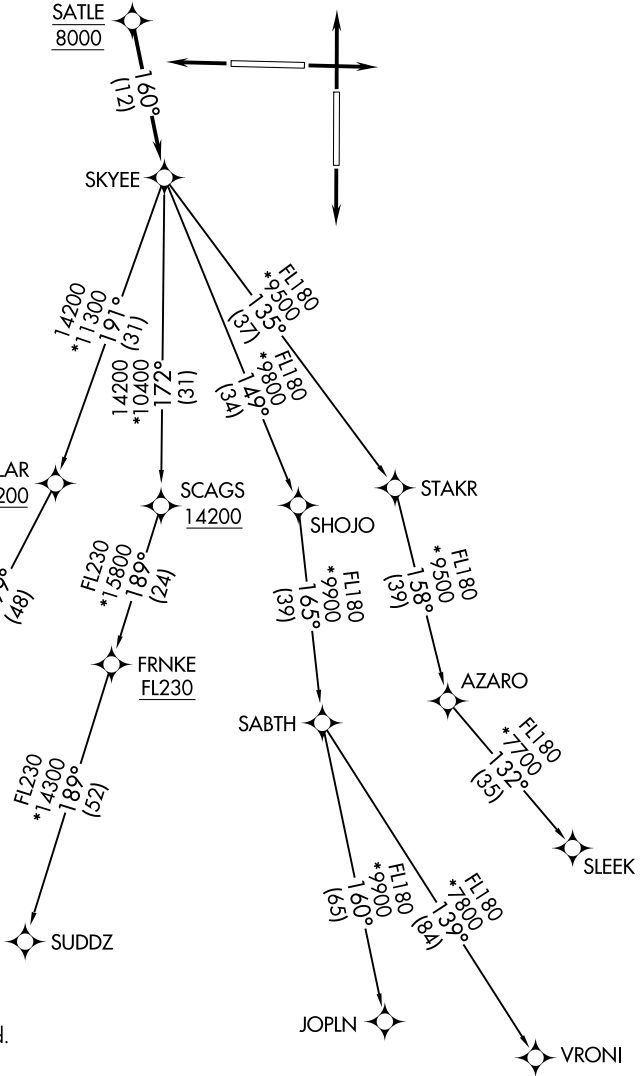
NOTE: Turbojets only.

NOTE: RADAR required.

NOTE: Chart not to scale.

(NARRATIVE ON FOLLOWING PAGE)

SKYEE ONE DEPARTURE (RNAV)





DEPARTURE ROUTE DESCRIPTION

TAKEOFF RUNWAY 8: Climb on a heading between 312° CW 228° as assigned by ATC. Thence. . . .

TAKEOFF RUNWAY 17: Climb on a heading between 352° CW 229° as assigned by ATC. Thence. . . .

TAKEOFF RUNWAY 26: Climb on a heading between 315° CW 083° as assigned by ATC. Thence. . . .

TAKEOFF RUNWAY 35: Climb on a heading between 313° CW 172° as assigned by ATC. Thence. . . .

. . . . expect RADAR vectors to cross SATLE at 8000 then on track 160° to SKYEE then on (transition) maintain FL230 or filed lower altitude. Expect higher filed altitude ten minutes after departure.

DAAYE TRANSITION (SKYEE1 .DAAYE)

JOPLN TRANSITION (SKYEE1 .JOPLN)

SLEEK TRANSITION (SKYEE1 .SLEEK)

SUDDZ TRANSITION (SKYEE1 .SUDDZ)

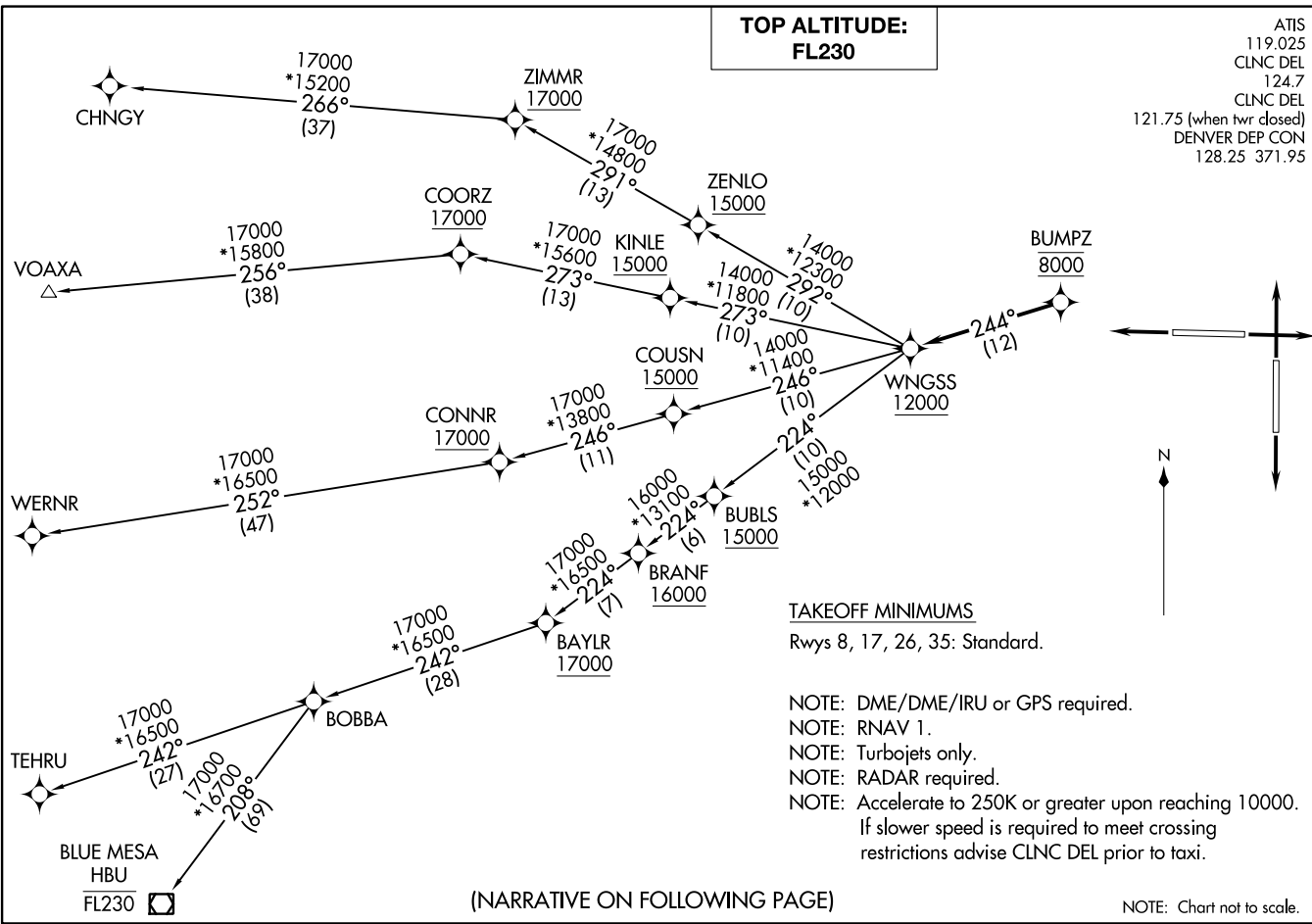
VRONI TRANSITION (SKYEE1 .VRONI)

SW-1, 22 FEB 2024 to 21 MAR 2024

SW-1, 22 FEB 2024 to 21 MAR 2024

WNGSS ONE DEPARTURE (RNAV)
(WNGSS1, WNGSS) 26MAR20

DENVER, COLORADO
COLORADO AIR AND SPACE PORT (CFO)
DENVER, COLORADO



(WNGSS1, WNGSS) 20086
WNGSS ONE DEPARTURE (RNAV)

COLORADO AIR AND SPACE PORT (CFO)
DENVER, COLORADO
AL-6831 (FAA)



DEPARTURE ROUTE DESCRIPTION

TAKEOFF RUNWAY 8: Climb on a heading between 312° CW 228° as assigned by ATC. Thence. . . .

TAKEOFF RUNWAY 17: Climb on a heading between 352° CW 229° as assigned by ATC. Thence. . . .

TAKEOFF RUNWAY 26: Climb on a heading between 315° CW 083° as assigned by ATC. Thence. . . .

TAKEOFF RUNWAY 35: Climb on a heading between 313° CW 172° as assigned by ATC. Thence. . . .

. . . . expect RADAR vectors to cross BUMPZ at 8000 then on track 244° to cross WNGSS at or above 12000 then on (transition) maintain FL230 or filed lower altitude. Expect higher filed altitude ten minutes after departure.

- BLUE MESA TRANSITION (WNGSS1.HBU)
- CHNGY TRANSITION (WNGSS1.CHNGY)
- TEHRU TRANSITION (WNGSS1.TEHRU)
- VOAXA TRANSITION (WNGSS1.VOAXA)
- WERNR TRANSITION (WNGSS1.WERNR)

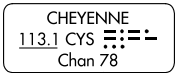
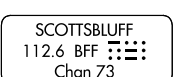
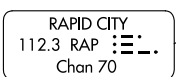
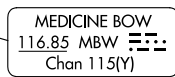
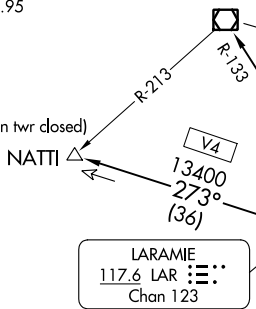
SW-1, 22 FEB 2024 to 21 MAR 2024

SW-1, 22 FEB 2024 to 21 MAR 2024

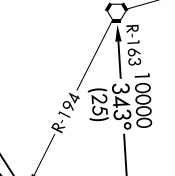
YELLOWSTONE FOUR DEPARTURE
(YELLOW4.DEN) 16JUN20

(YELLOW4.DEN) 23334
YELLOWSTONE FOUR DEPARTURE

DENVER DEP CON
128.25 371.95
ATIS
119.025
CLNC DEL
124.7
CLNC DEL
121.75 (when twr closed)

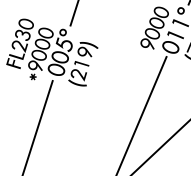


YAMMI
12000 (For MEDICINE BOW transition only)

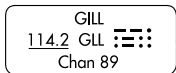


YALES

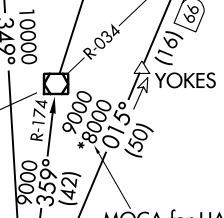
COPLA



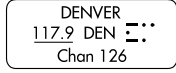
**TOP ALTITUDE:
ASSIGNED BY ATC**



YOKES



MOCA for HANKI transition only.



TAKEOFF MINIMUMS
All runways: Standard.

NOTE: RADAR required.

(CONTINUED ON FOLLOWING PAGE)

NOTE: Chart not to scale.

DENVER, COLORADO
COLORADO AIR AND SPACE PORT (CFO)

AL-6851 (FAA)
COLORADO AIR AND SPACE PORT (CFO)
DENVER, COLORADO



DEPARTURE ROUTE DESCRIPTION

TAKEOFF ALL RUNWAYS: Fly assigned heading and altitude for RADAR vectors to assigned transition. Expect filed altitude 10 minutes after departure.

LOST COMMUNICATIONS: If no transmissions are received within one minute after departure, maintain assigned heading until 7000 feet, then climb to filed altitude direct DEN VOR/DME, then on assigned transition. If filed altitude is above 10000 feet, cross DEN VOR/DME at or above 11000 feet.

CHEYENNE TRANSITION (YELLOW4.CYS): From over DEN VOR/DME on DEN R-349 and CYS R-163 to CYS VORTAC.

HANKI TRANSITION (YELLOW4.HANKI): From over DEN VOR/DME on DEN R-015 and GLL R-034 to HANKI.

LARAMIE TRANSITION (YELLOW4.LAR): From over DEN VOR/DME on DEN R-334 and LAR R-125 to LAR VOR/DME.

MEDICINE BOW TRANSITION (YELLOW4.MBW): From over DEN VOR/DME on DEN R-334 and MBW R-133 to MBW VOR/DME.

NATTI TRANSITION (YELLOW4.NATTI): From over DEN VOR/DME on DEN R-334 and LAR R-125 to LAR VOR/DME, then on LAR R-273 to NATTI.

RAPID CITY TRANSITION (YELLOW4.RAP): From over DEN VOR/DME on DEN R-359 and GLL R-174 to GLL VOR/DME, then on GLL R-005 and RAP R-186 to RAP VORTAC.

SCOTTSBLUFF TRANSITION (YELLOW4.BFF): From over DEN VOR/DME on DEN R-015 and BFF R-191 to BFF VORTAC.

SW-1, 22 FEB 2024 to 21 MAR 2024

SW-1, 22 FEB 2024 to 21 MAR 2024