

WAAS CH 72704 W13A	APP CRS 128°	Rwy Idg TDZE Apt Elev	4300 896 900
--	------------------------	-----------------------------	---

RNAV (GPS) RWY 13

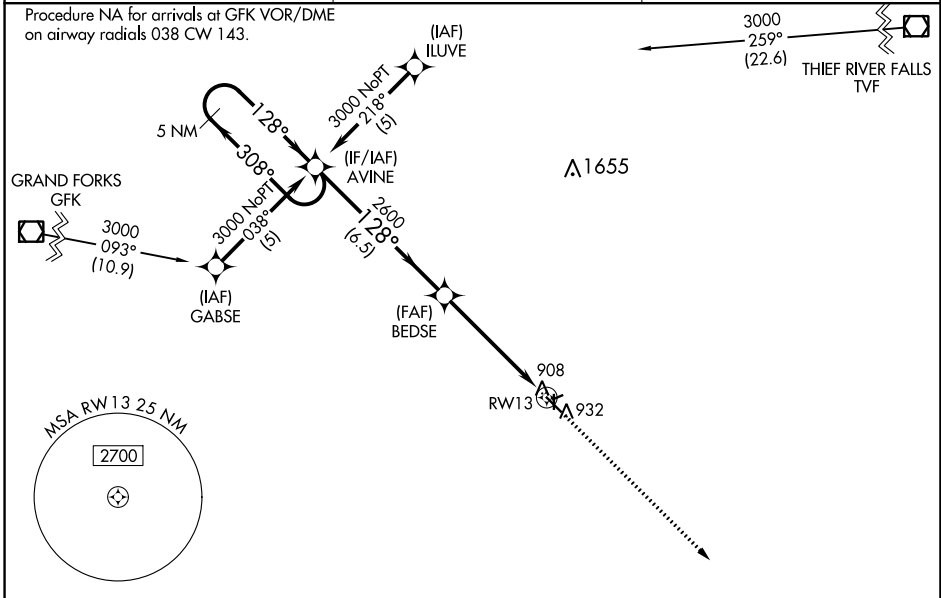
CROOKSTON MUNI/KIRKWOOD FLD (CKN)

RNP APCH.

▼ Baro-VNAV NA when using Grand Forks altimeter setting. For uncompensated Baro-VNAV systems, LNAV/VNAV NA below -16°C (4°F) or above 54°C (130°F). When local altimeter setting not received, use Grand Forks altimeter setting and increase LPV DA to 1208 feet and LNAV/VNAV DA to 1272 feet; increase all MDA's 80 feet and Circling Cat C visibility ¼ SM. Circling Rwys 6, 24, 17, 35 NA at night.

MISSED APPROACH: Climb to 3000 direct FAPVU and hold.

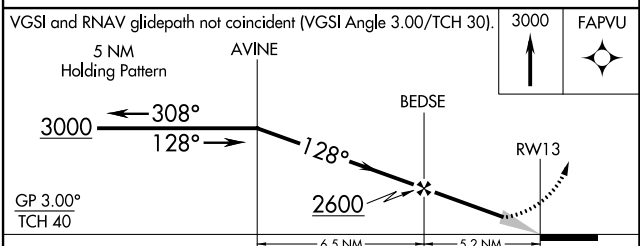
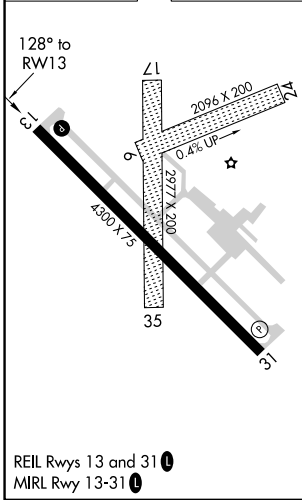
AWOS-3 126.425	GRAND FORKS APP CON ★ 118.1 318.1	UNICOM 122.7 (CTAF) ①
--------------------------	---	---------------------------------



NC-1, 22 FEB 2024 to 21 MAR 2024

NC-1, 22 FEB 2024 to 21 MAR 2024

ELEV 900	TDZE 896
----------	----------



CATEGORY	A	B	C	D
LPV DA	1146-1	250 (300-1)		NA
LNAV/VNAV DA	1210-1	314 (400-1)		NA
LNAV MDA	1360-1	464 (500-1)	1360-1¼ 464 (500-1¼)	NA
CIRCLING	1360-1	460 (500-1)	1480-1½ 580 (600-1½)	NA

WAAS CH 69304 W31A	APP CRS 308°	Rwy Idg TDZE Apt Elev	4300 897 900
--	------------------------	-----------------------------	---

RNAV (GPS) RWY 31

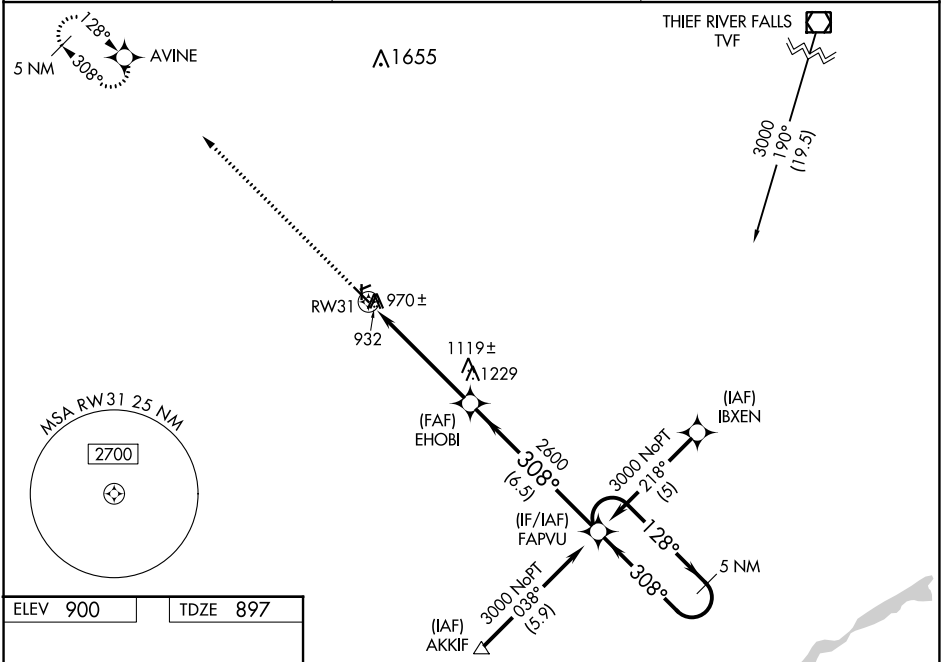
CROOKSTON MUNI/KIRKWOOD FLD (CKN)

RNP APCH.

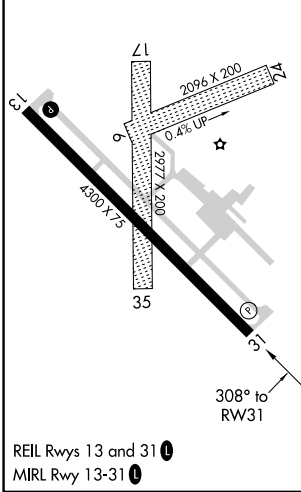
Baro-VNAV NA when using Grand Forks altimeter setting. For uncompensated Baro-VNAV systems, LNAV/VNAV NA below -16°C (4°F) or above 54°C (130°F). When local altimeter setting not received, use Grand Forks altimeter setting and increase LPV DA to 1219 feet and LNAV/VNAV DA to 1382 feet, increase all MDAs 80 feet and Circling Cat C visibility ¼ SM. Visibility reduction by helicopters NA. Circling Rws 6, 24, 17, 35 NA at night.

MISSED APPROACH: Climb to 3000 direct AVINE and hold.

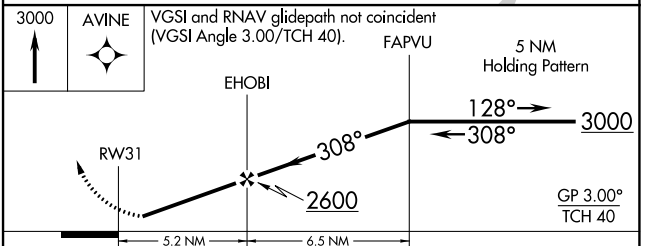
AWOS-3 126.425	GRAND FORKS APP CON* 118.1 318.1	UNICOM 122.7 (CTAF)
--------------------------	--	-------------------------------



ELEV 900	TDZE 897
----------	----------



REIL Rws 13 and 31
MIRL Rwy 13-31



CATEGORY	A	B	C	D
LPV DA	1157-1 260 (300-1)			NA
LNAV/VNAV DA	1320-1½ 423 (500-1½)			NA
LNAV MDA	1380-1	483 (500-1)	1380-1¼ 483 (500-1¼)	NA
CIRCLING	1380-1	480 (500-1)	1480-1½ 580 (600-1½)	NA

NC-1, 22 FEB 2024 to 21 MAR 2024

NC-1, 22 FEB 2024 to 21 MAR 2024

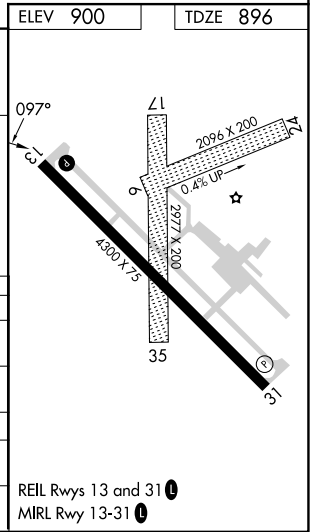
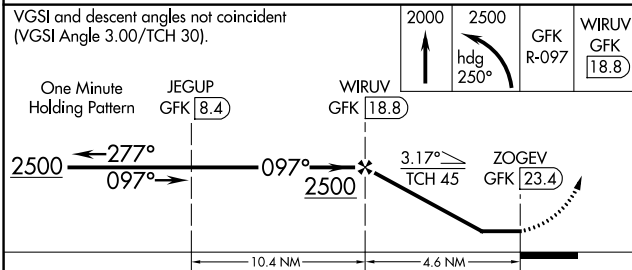
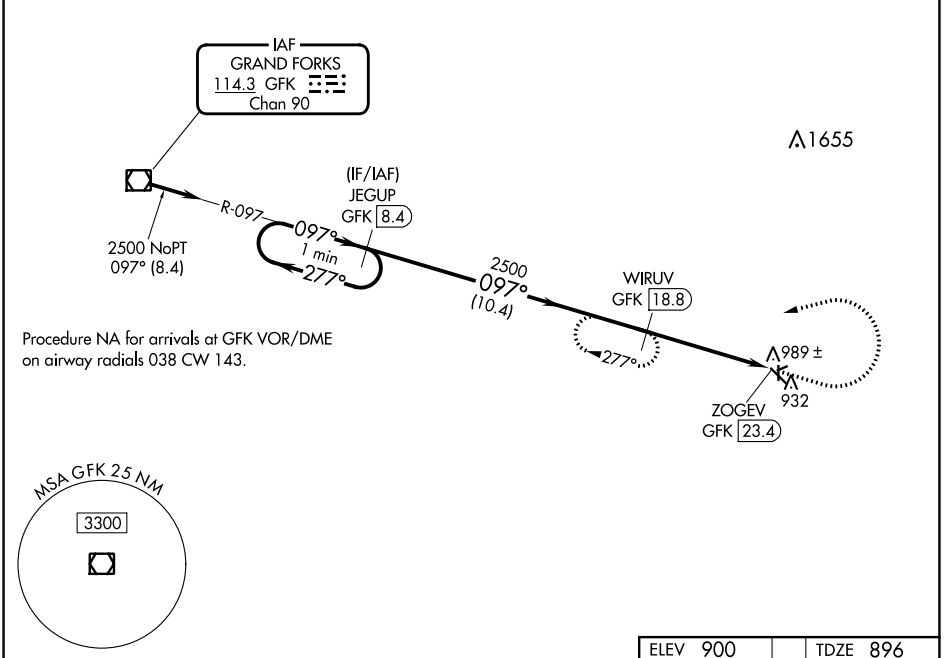
VOR/DME GFK 114.3 Chan 90	APP CRS 097°	Rwy Idg TDZE Apt Elev	4300 896 900
---	------------------------	-----------------------------	---

VOR/DME RWY 13
CROOKSTON MUNI/KIRKWOOD FLD (CKN)

⚠ When local altimeter setting not received, use Grand Forks Intl altimeter setting. Circling Rwy's 6, 24, 17, 35 NA at night.

MISSED APPROACH: Climb to 2000 then climbing left turn to 2500 heading 250° and GFK VOR/DME R-097 to WIRUV/GFK 18.8 DME and hold.

AWOS-3 126.425	GRAND FORKS APP CON* 118.1 318.1	UNICOM 122.7 (CTAF) 0
--------------------------	--	---------------------------------



CATEGORY	A	B	C	D
S-13	1400-1	504 (500-1)	1400-1 ³ / ₈ 504 (500-1 ³ / ₈)	NA
CIRCLING	1400-1	500 (500-1)	1480-1 ¹ / ₂ 580 (600-1 ¹ / ₂)	NA
GRAND FORKS INTL ALTIMETER MINIMUMS				
S-13	1480-1	584 (600-1)	1480-1 ³ / ₄ 584 (600-1 ³ / ₄)	NA
CIRCLING	1480-1	580 (600-1)	1560-1 ³ / ₄ 660 (700-1 ³ / ₄)	NA

NC-1, 22 FEB 2024 to 21 MAR 2024

NC-1, 22 FEB 2024 to 21 MAR 2024