

# DEBERRY FIVE ARRIVAL

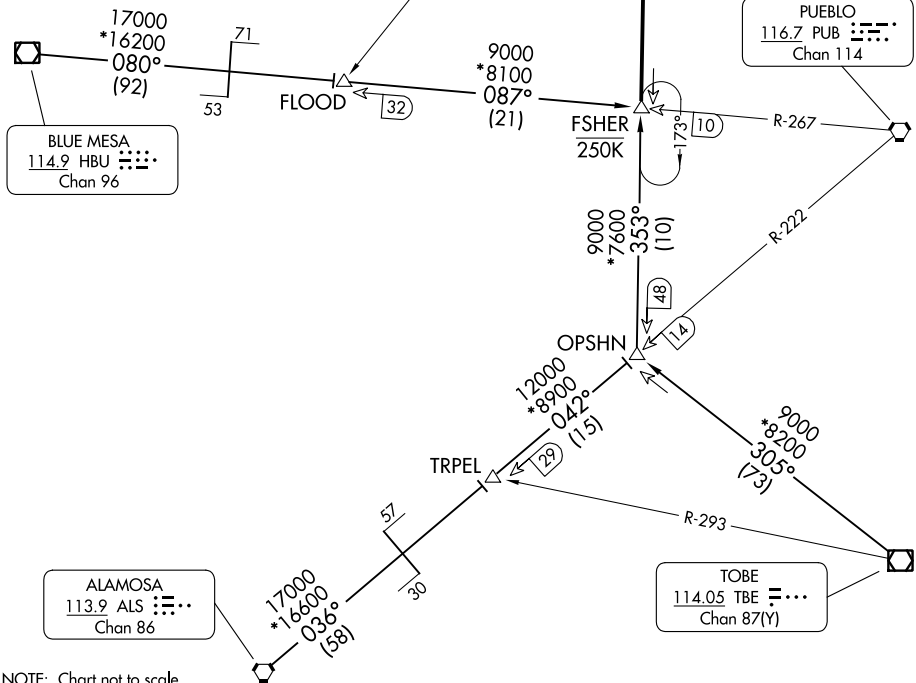
AL-87 (FAA)

CITY OF COLORADO SPRINGS MUNI (COS)  
COLORADO SPRINGS, COLORADO

SPRINGS APP CON  
124.0 257.875  
ATIS  
125.0 254.3

BLACK FOREST  
112.5 BRK  
Chan 72

NOTE: RADAR required.



SW-1, 22 FEB 2024 to 21 MAR 2024

SW-1, 22 FEB 2024 to 21 MAR 2024

NOTE: Chart not to scale.

### ARRIVAL ROUTE DESCRIPTION

**ALAMOSA TRANSITION (ALS.DBRY5):** From over ALS VORTAC on ALS R-036 and PUB R-222 to TRPEL, then on PUB R-222 and BRK R-173 to FSHER. Thence. . .

**BLUE MESA TRANSITION (HBU.DBRY5):** From over HBU VOR/DME on HBU R-080 and PUB R-267 to FLOOD, then on PUB R-267 to FSHER. Thence. . .

**TOBE TRANSITION (TBE.DBRY5):** From over TBE VOR/DME on TBE R-305 and BRK R-173 to FSHER. Thence. . .

. . . From over FSHER on BRK R-173 to BRK VOR/DME. Expect RADAR vectors to the final approach course at or before BRK VOR/DME.

**LOST COMMUNICATIONS:** Proceed to BRK VOR/DME.

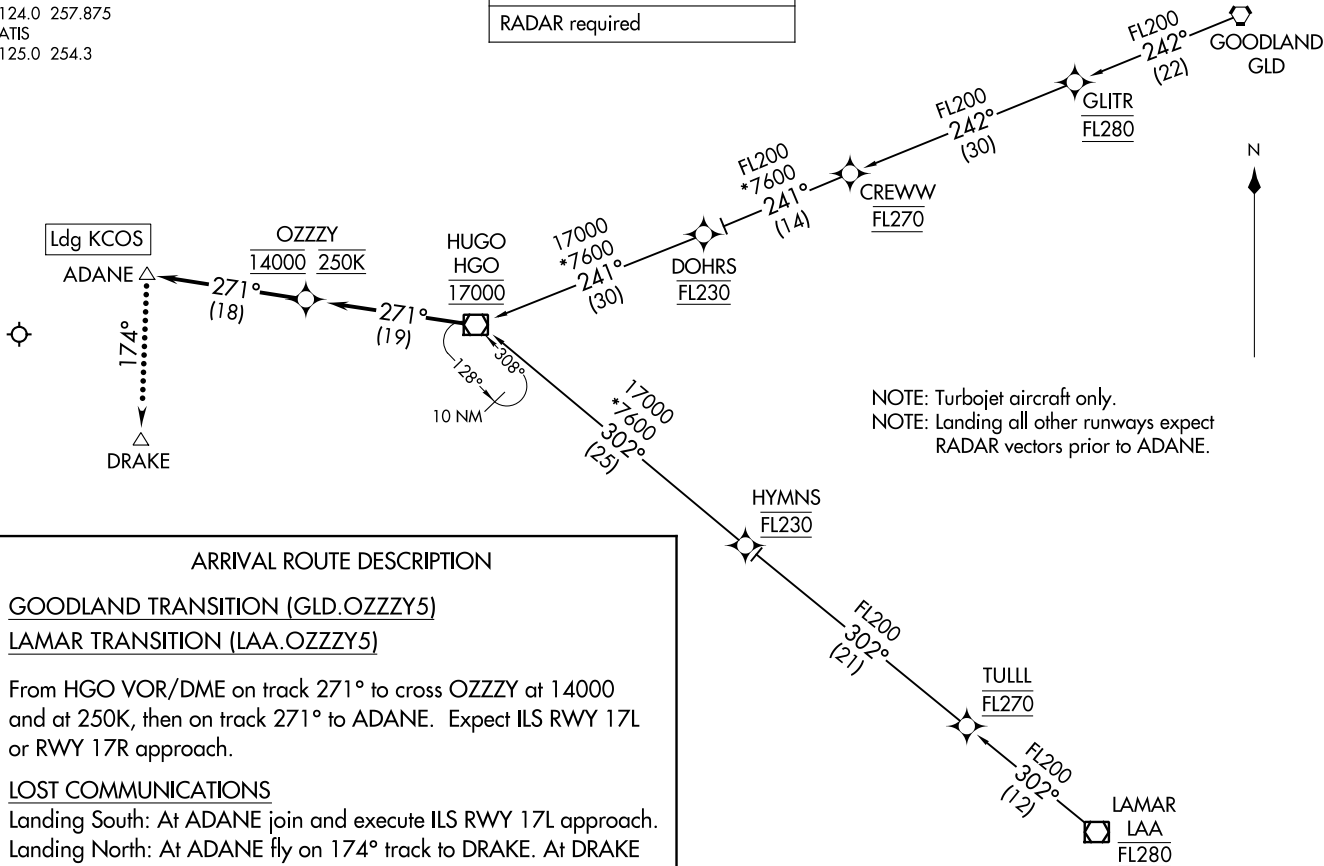
# DEBERRY FIVE ARRIVAL

RNAV 1 - DME/DME/IRU or GPS  
 RADAR required

SPRINGS APP CON  
 124.0 257.875  
 ATIS  
 125.0 254.3

**OZZY FIVE ARRIVAL (RNAV)**  
 (HGO.OZZY5) 02DEC21

**OZZY FIVE ARRIVAL (RNAV)**  
 21336



NOTE: Turbojet aircraft only.  
 NOTE: Landing all other runways expect  
 RADAR vectors prior to ADANE.

**ARRIVAL ROUTE DESCRIPTION**

GOODLAND TRANSITION (GLD.OZZY5)  
LAMAR TRANSITION (LAA.OZZY5)

From HGO VOR/DME on track 271° to cross OZZZY at 14000 and at 250K, then on track 271° to ADANE. Expect ILS RWY 17L or RWY 17R approach.

LOST COMMUNICATIONS

Landing South: At ADANE join and execute ILS RWY 17L approach.  
 Landing North: At ADANE fly on 174° track to DRAKE. At DRAKE join and execute ILS RWY 35L approach.

NOTE: Chart not to scale.

CITY OF COLORADO SPRINGS MUNI (COS)  
 COLORADO SPRINGS, COLORADO

CITY OF COLORADO SPRINGS MUNI (COS)  
 COLORADO SPRINGS, COLORADO