

APP CRS	Rwy Idg	5004
216°	TDZE	717
	Apt Elev	717

RNAV (GPS) RWY 22

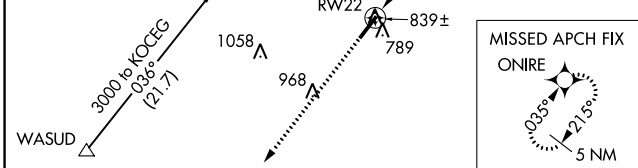
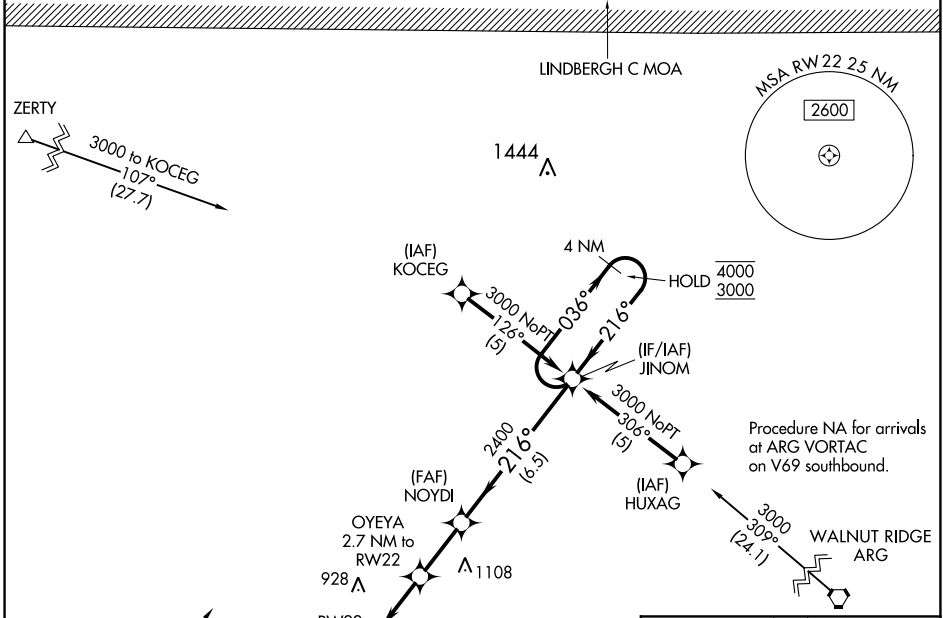
SHARP COUNTY RGNL (CVK)

RNP APCH.

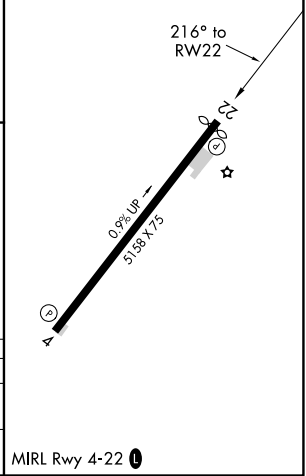
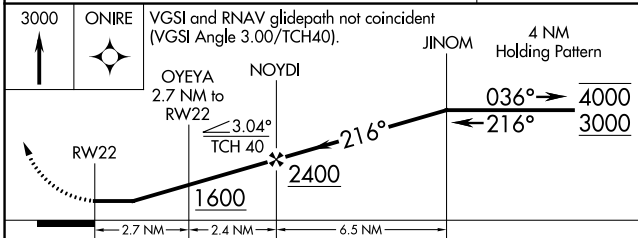
▼ Rwy 22 helicopter visibility reduction below 3/4 SM NA. Circling Rwy 4 NA at night. Use Walnut Ridge Rgnl altimeter setting, when not received, use Jonesboro Muni setting and increase all MDAs 60 feet, increase LNAV Cat C visibility 1/8 SM.

MISSED APPROACH: Climb to 3000 direct ONIRE and hold.

ARG AWOS-3PT 135.925	MEMPHIS CENTER 120.075 289.4	UNICOM 122.7 (CTAF) 0
--------------------------------	--	---------------------------------



ELEV 717	TDZE 717
----------	----------



CATEGORY	A	B	C	D
LNAV MDA	1360-1	643 (700-1)	1360-1 7/8 643 (700-1 7/8)	NA
CIRCLING	1400-1	683 (700-1)	1400-2 683 (700-2)	NA

MIRL Rwy 4-22 0

SC-1, 22 APR 2021 to 20 MAY 2021

SC-1, 22 APR 2021 to 20 MAY 2021

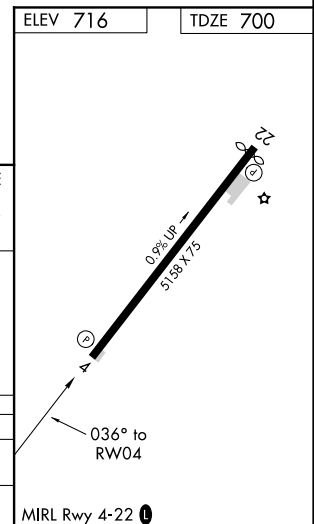
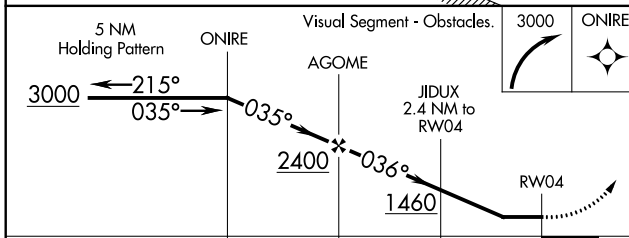
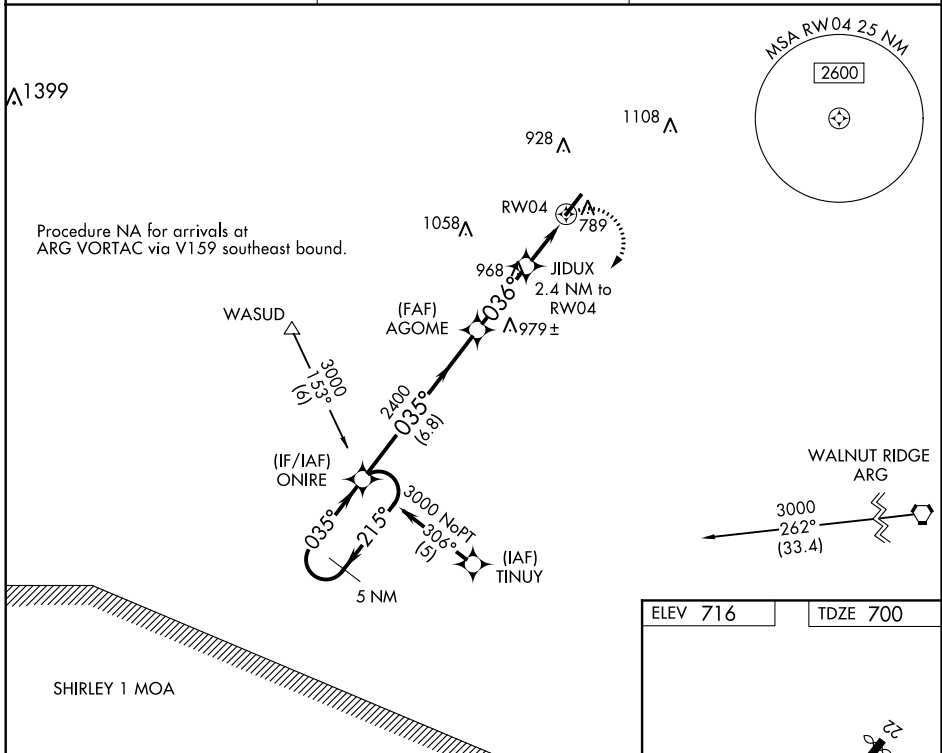
APP CRS	Rwy Idg	5158
036°	TDZE	700
	Apt Elev	716

RNAV (GPS) RWY 4

SHARP COUNTY RGNL (CVK)

RNP APCH.	Use Walnut Ridge altimeter setting; if not received, use Jonesboro altimeter setting and increase all MDAs 60 feet. Rwy 4 helicopter visibility reduction below 1 SM NA. Straight-in Rwy 4 NA at night, Circling Rwy 4 NA at night.	MISSED APPROACH: Climbing right turn to 3000 direct ONIRE and hold.
▼ Use Walnut Ridge altimeter setting; if not received, use Jonesboro altimeter setting and increase all MDAs 60 feet. Rwy 4 helicopter visibility reduction below 1 SM NA. Straight-in Rwy 4 NA at night, Circling Rwy 4 NA at night.		

ARG AWOS-3PT 135,925	MEMPHIS CENTER 120,075 289,4	UNICOM 122.7 (CTAF) 0
--------------------------------	--	---------------------------------



CATEGORY	A	B	C	D
RNAV MDA	1260-1	560 (600-1)	1260-1½ 560 (600-1½)	NA
CIRCLING	1400-1	684 (700-1)	1400-2 684 (700-2)	NA

SC-1, 22 APR 2021 to 20 MAY 2021

SC-1, 22 APR 2021 to 20 MAY 2021