

LOC I-CWF	APP CRS	Rwy Idg	10702
110.7	154°	TDZE	16
		Apt Elev	17

ILS or LOC RWY 15

CHENNAULT INTL (CWF)

ADF or DME required for procedure entry. ADF or DME required for LOC only.

V VDP NA when using Lake Charles Rgnl altimeter setting. When local altimeter setting not received, use Lake Charles Rgnl altimeter setting: Increase DA to 232 feet; Increase all MDA/ASRs 20 feet and visibility Circling Cat D ¼ SM. For inop ALS, increase S-ILS 15 Cat E visibility to ¾ SM, and S-LOC 15 Cats C/D/E to 1 ¾ SM. For inop ALS when using Lake Charles altimeter settings, increase S-ILS 15 Cat E visibility to ¾ SM, and S-LOC 15 Cats C/D/E to 1 ¾ SM. DME from LCH VORTAC. DME use requires simultaneous reception of I-CWF and LCH DME.

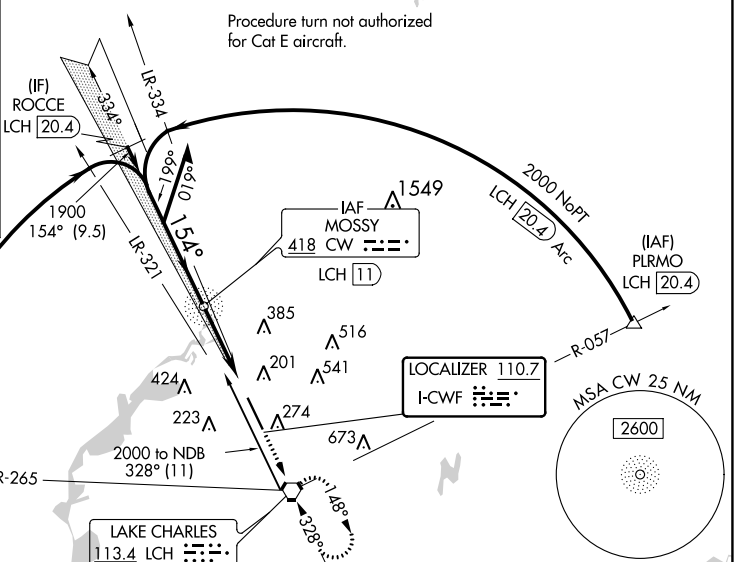
MALS MISSED APPROACH: Climb to 2000 direct LCH VORTAC and hold, continue climb-in-hold to 2000.

ATIS	LAKE CHARLES APP CON*	CHENNAULT TOWER*	GND CON	UNICOM
120.0	119.8 282.3	124.2 (CTAF) 290.4	121.65 275.8	122.95

ALTERNATE MISSED APCH FIX

MOSSEY CW 418 LCH 11

MOSSEY CW 418 LCH 11



WAAS CH 45502 W15A	APP CRS 154°	Rwy Idg 10702 TDZE 16 Apt Elev 17
--	------------------------	--

RNAV (GPS) RWY 15

CHENNAULT INTL (CWF')

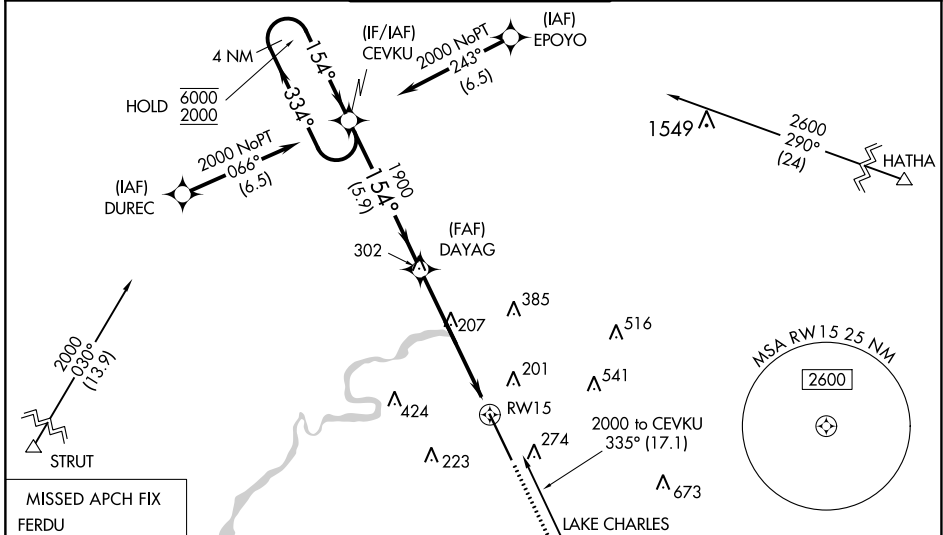
RNP APCH - GPS

Baro-VNAV and VDP NA when using Lake Charles Rgnl altimeter setting. For uncompensated Baro-VNAV systems, procedure NA below -15°C or above 54°C. When local altimeter setting not received, use Lake Charles Rgnl altimeter ASR setting and increase LPV DA to 232 feet; increase LNAV/VNAV DA to 523 feet; increase all MDAs 20 feet and LNAV visibility Cat C/D 1/8 SM, and Circling visibility Cat D 1/4 SM. For inop ALS, increase LNAV/VNAV all Cats to 1 1/8 SM. For inop ALS when using Lake Charles Rgnl altimeter setting increase LNAV/VNAV visibility all Cats to 1 1/8 SM.

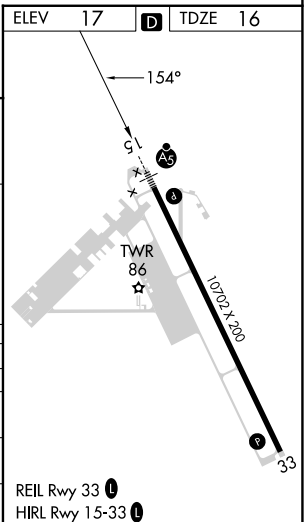
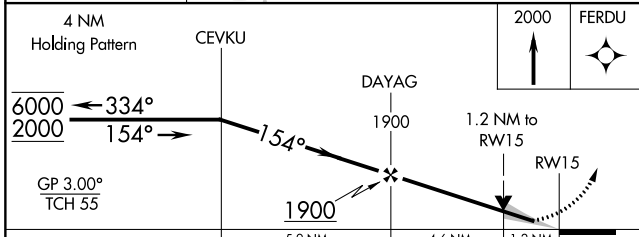
MALSR

MISSED APPROACH: Climb to 2000 direct FERDU and hold.

ATIS 120.0	LAKE CHARLES APP CON* 119.8 282.3	CHENNAULT TOWER* 124.2 (CTAF) 0 290.4	GND CON 121.65 275.8	UNICOM 122.95
----------------------	---	---	--------------------------------	-------------------------



ELEV 17	D	TDZE 16
---------	---	---------



CATEGORY	A	B	C	D
LPV DA		216-1/2	200 (200-1/2)	
LNAV/VNAV DA		507-1	491 (500-1)	
LNAV MDA	460-1/2	444 (500-1/2)	460-3/4	444 (500-3/4)
CIRCLING	640-1	623 (700-1)	640-1-3/4	740-2-1/4
			623 (700-1-3/4)	723 (800-2-1/4)

SC-4, 22 FEB 2024 to 21 MAR 2024

SC-4, 22 FEB 2024 to 21 MAR 2024

WAAS CH 65817 W33A	APP CRS 334°	Rwy Idg 10702 TDZE 17 Apt Elev 17
--	------------------------	--

RNAV (GPS) RWY 33

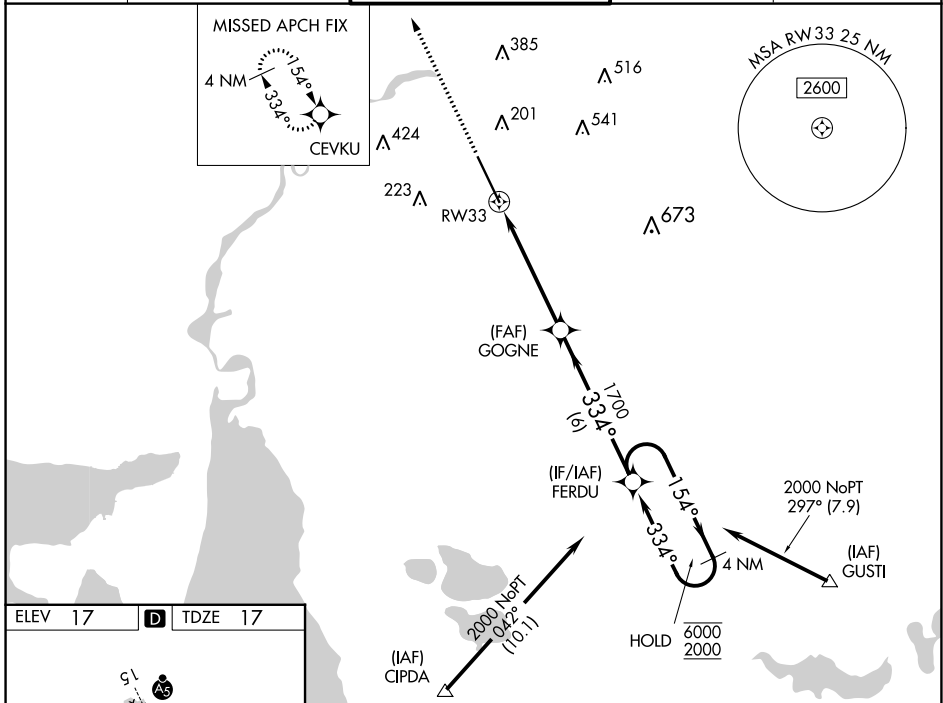
CHENNAULT INTL (CWF')

RNP APCH - GPS

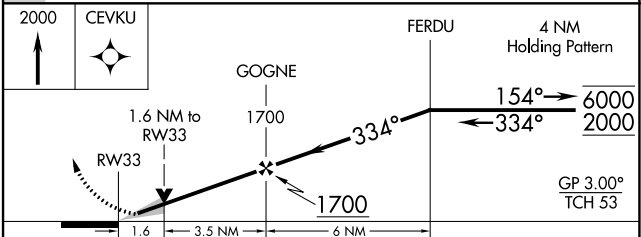
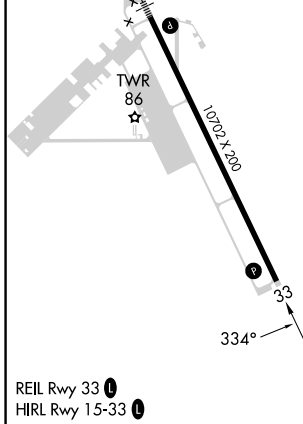
⚠ Baro-VNAV and VDP NA when using Lake Charles Rgnl altimeter setting.
 For uncompensated Baro-VNAV systems, LNAV/VNAV NA below -15°C or above 54°C.
⚠ When local altimeter setting not received, use Lake Charles Rgnl altimeter setting and increase LPV DA to 233 feet; increase LNAV/VNAV DA to 510 feet and all visibilities 1/8 SM.
ASR Increase all MDAs 20 feet and LNAV visibility Cat C/D 1/8 SM.

MISSED APPROACH: Climb to 2000 direct CEVKU and hold.

ATIS 120.0	LAKE CHARLES APP CON * 119.8 282.3	CHENNAULT TOWER * 124.2 (CTAF) 0 290.4	GND CON 121.65 275.8	UNICOM 122.95
----------------------	--	--	--------------------------------	-------------------------



ELEV 17	D	TDZE 17
---------	----------	---------



CATEGORY	A	B	C	D
LPV DA	217-3/4		200 (200-3/4)	
LNAV/VNAV DA	494-13/4		477 (500-13/4)	
LNAV MDA	580-1	563 (600-1)	580-15/8	563 (600-15/8)
C CIRCLING	640-1	623 (700-1)	640-13/4	740-21/4 723 (800-21/4)

SC-4, 22 FEB 2024 to 21 MAR 2024

SC-4, 22 FEB 2024 to 21 MAR 2024