

WAAS CH 87031 W27A	APP CRS 240°	Rwy Idg TDZE Apt Elev	6101 4702 4705
--	------------------------	-----------------------------	---

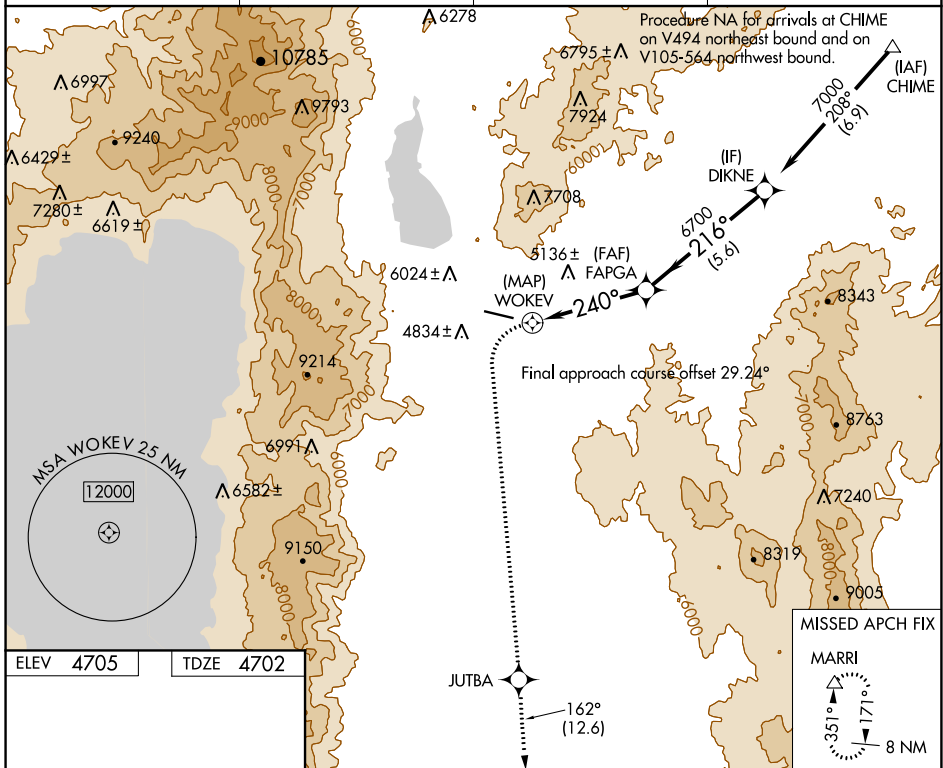
RNAV (GPS) RWY 27

CARSON CITY (CXP)

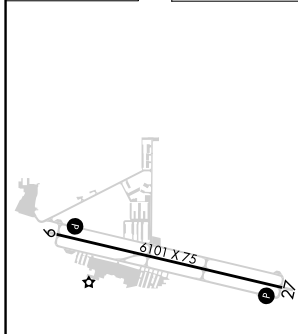
NA DME/DME RNP-0.3 NA. Procedure NA at night. When local altimeter setting not received use Reno/Tahoe altimeter setting and increase all MDA 540 feet. Helicopter visibility reduction below 1 SM not authorized. Circling NA north of Rwy 9-27.

MISSED APPROACH: Climbing left turn to 13400 direct JUTBA and on track 162° to MARRI and hold, continue climb-in-hold to 13400.

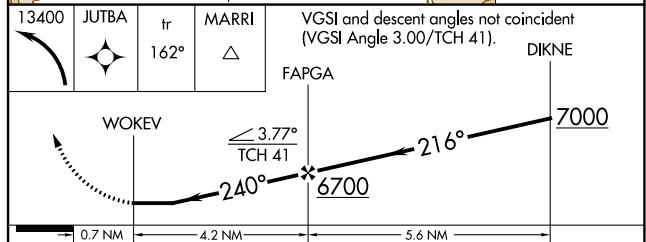
AWOS-3PT 119.925	NORCAL APP CON 119.2 279.55	CLNC DEL 133.25	UNICOM 123.0 (CTAF)
----------------------------	---------------------------------------	---------------------------	-------------------------------



ELEV 4705	TDZE 4702
-----------	-----------



TDZL Rwy 9 and 27	MIRL Rwy 9-27	REIL Rwy 9 and 27
-------------------	---------------	-------------------



CATEGORY	A	B	C	D
LP MDA	5900-1¼ 1198 (1200-1¼)	5900-1½ 1198 (1200-1½)	NA	
LNAV MDA	6180-1¼ 1478 (1500-1¼)	6180-1½ 1478 (1500-1½)	NA	
C CIRCLING	6180-1¼ 1475 (1500-1¼)	6180-1½ 1475 (1500-1½)	NA	

SW-4, 20 MAY 2021 to 17 JUN 2021

SW-4, 20 MAY 2021 to 17 JUN 2021

APP CRS	Rwy Idg	N/A
342°	TDZE	N/A
	Apt Elev	4705

RNAV (GPS)-A

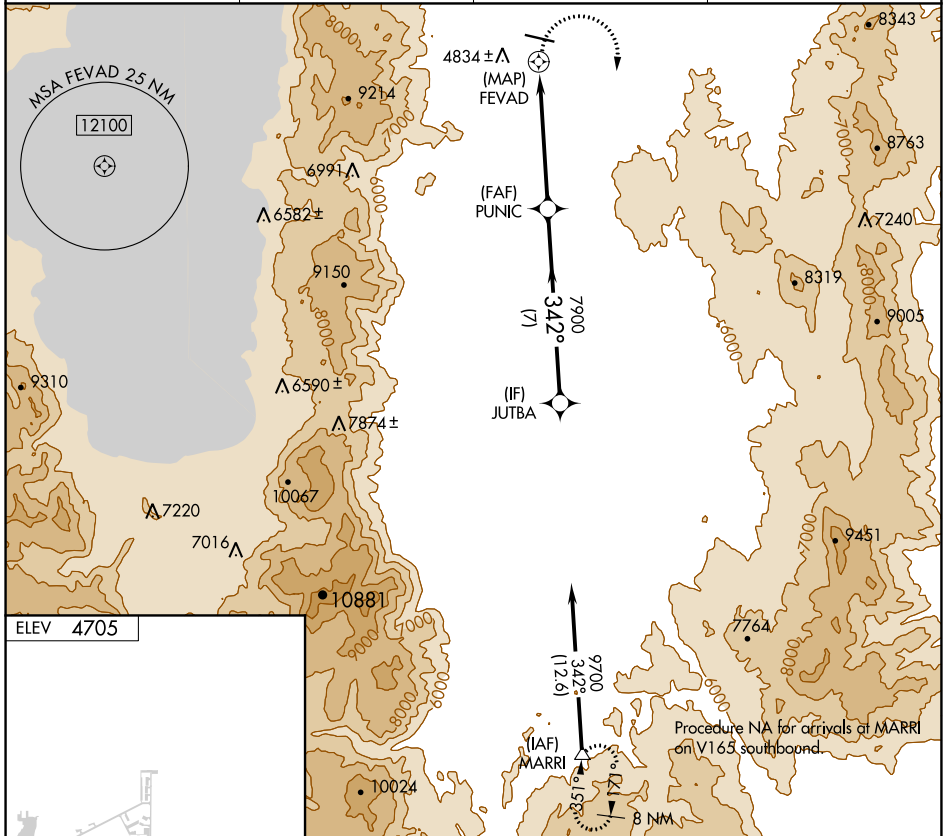
CARSON CITY (CXP)

RNP APCH.

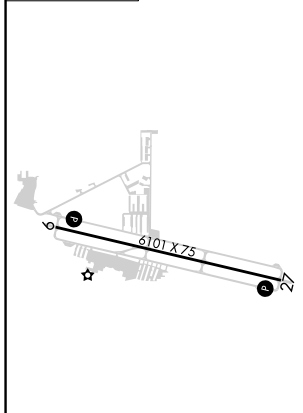
▼ Procedure NA at night. When local altimeter setting not received,
▲ NA use Reno/Tahoe Intl altimeter setting and increase all MDA 540 feet.
 Circling NA north of Rwy 9-27.

MISSED APPROACH: Climbing right turn to 13400 direct MARRI and hold, continue climb-in-hold to 13400.

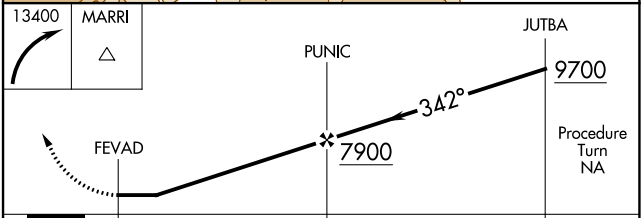
AWOS-3PT 119.925	NORCAL APP CON 119.2 279.55	CLNC DEL 133.25	UNICOM 123.0 (CTAF) 0
----------------------------	---------------------------------------	---------------------------	---------------------------------



ELEV 4705



TDZL Rwy 9 and 27 **1**
 MIRL Rwy 9-27 **1** *
 REIL Rwy 9 and 27 **1**



CATEGORY	A	B	C	D
C CIRCLING	6380-1¼ 1675 (1700-1¼)	6380-1½ 1675 (1700-1½)	6380-3 1675 (1700-3)	7660-3 2955 (3000-3)

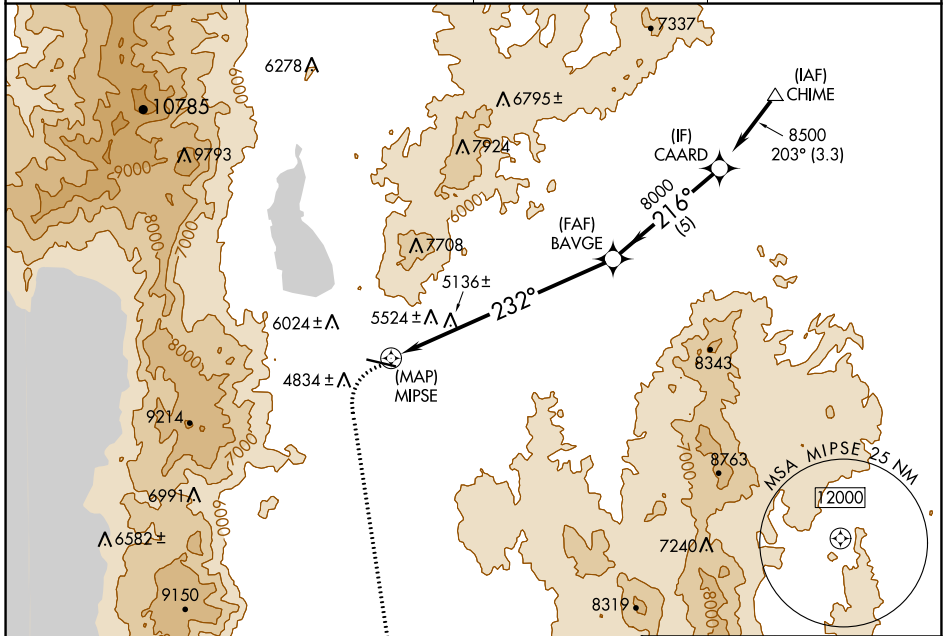
APP CRS	Rwy Idg	N/A
232°	TDZE	N/A
	Apt Elev	4705

RNAV (GPS)-B

CARSON CITY (CXP)

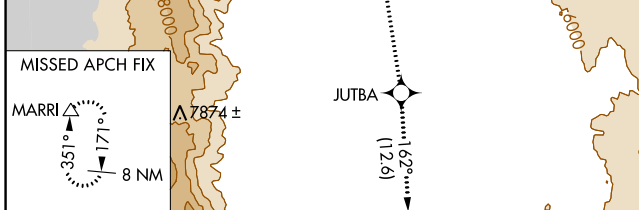
RNP APCH.	MISSED APPROACH: Climbing left turn to 13400 direct JUTBA and on track 162° direct MARRI and hold, continue climb-in-hold to 13400.
<p>▼ Circling NA north of Rwy 9-27.</p> <p>▲ Procedure NA at night.</p>	

AWOS-3PT 119.925	NORCAL APP CON 119.2 279.55	CLNC DEL 133.25	UNICOM 123.0 (CTAF) 0
----------------------------	---------------------------------------	---------------------------	---------------------------------

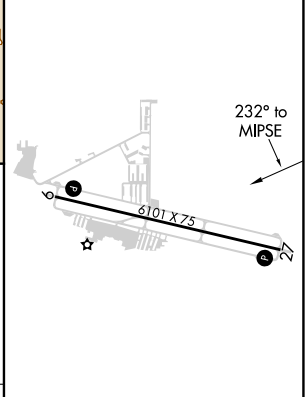
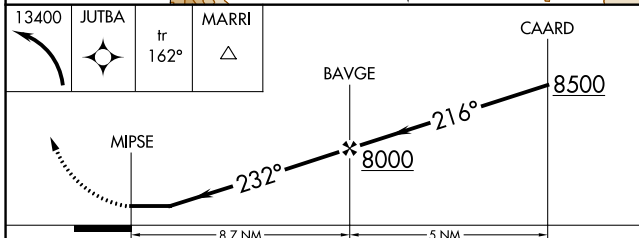


SW-4, 20 MAY 2021 to 17 JUN 2021

SW-4, 20 MAY 2021 to 17 JUN 2021



ELEV	4705
------	-------------



CATEGORY	A	B	C	D
CIRCLING	6340-1¼ 1635 (1700-1¼)	6340-1½ 1635 (1700-1½)	6340-3 1635 (1700-3)	7660-3 2955 (3000-3)

TDZL Rwy 9 and 27 0

MIRL Rwy 9-27 0 *

REIL Rwy 9 and 27 0