

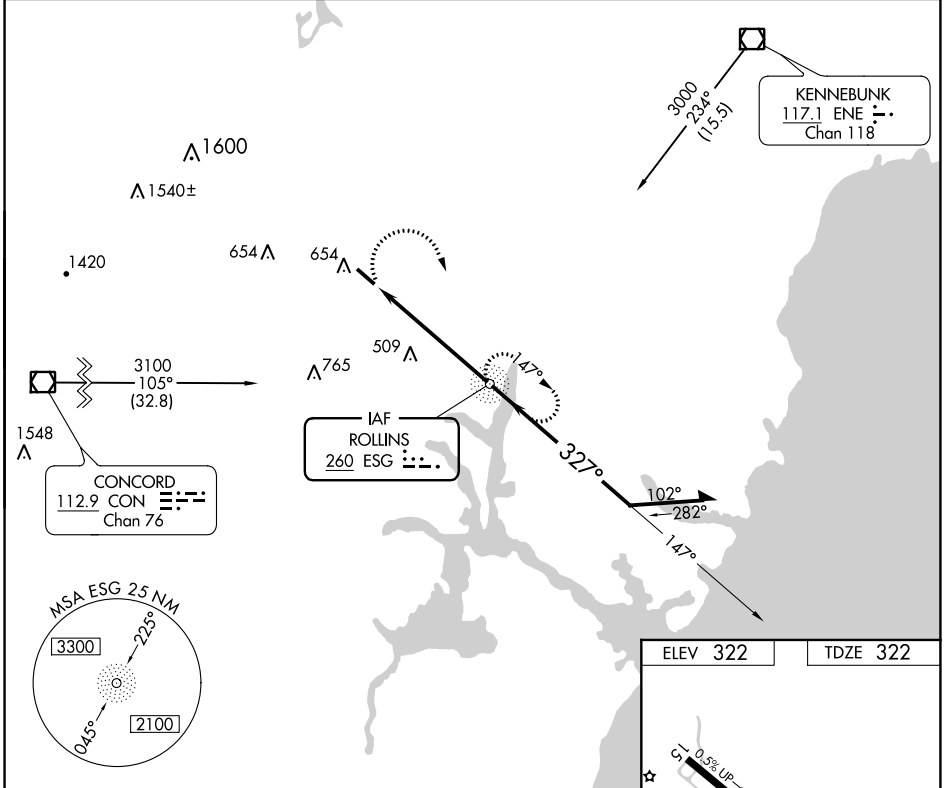
NDB ESG	APP CRS	Rwy Idg	4201
260	327°	TDZE	322
		Apt Elev	322

NDB RWY 33

SKYHAVEN (DAW)

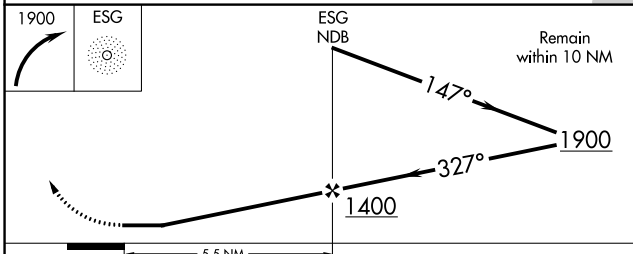
	ODALS	MISSED APPROACH: Climbing right turn to 1900 direct ESG NDB and hold.

ASOS 135.275	BOSTON APP CON 125.05 269.4	UNICOM 122.7 (CTAF)
------------------------	---------------------------------------	-------------------------------



NE-1, 22 APR 2021 to 20 MAY 2021

NE-1, 22 APR 2021 to 20 MAY 2021



ELEV 322	TDZE 322
----------	----------

REIL Rwy 15	
MRL Rwy 15-33	
FAF to MAP 5.5 NM	
Knots	60 90 120 150 180
Min:Sec	5:30 3:40 2:45 2:12 1:50

CATEGORY	A	B	C	D
S-33	860-1	538 (600-1)	860-1½ 538 (600-1½)	NA
CIRCLING	1020-1	698 (700-1)	1020-2 698 (700-2)	NA

WAAS CH 72715 W33A	APP CRS 327°	Rwy Idg 4201 TDZE 322 Apt Elev 322
--	------------------------	---

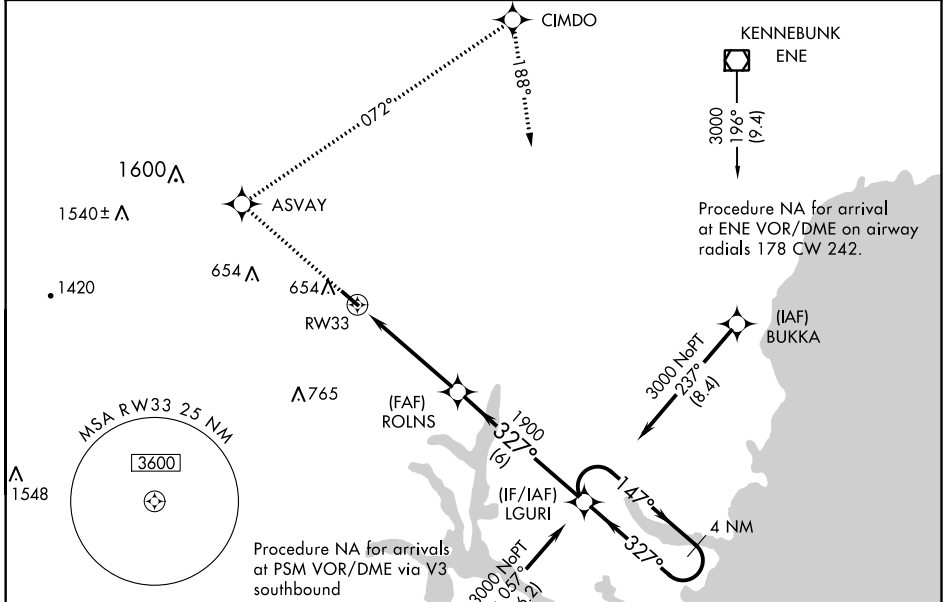
RNAV (GPS) RWY 33

SKYHAVEN (DAW)

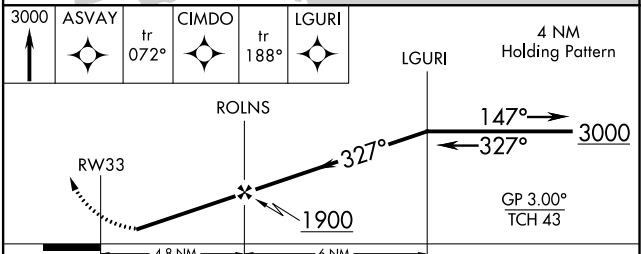
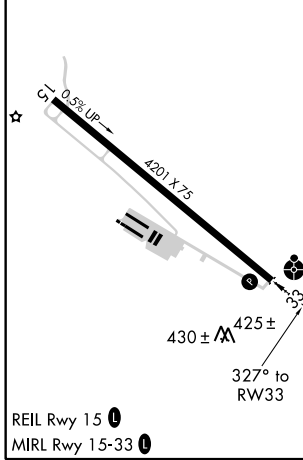
⚠ Baro-VNAV NA when using Portsmouth altimeter setting. For uncompensated Baro-VNAV systems, LNAV/VNAV NA below -15°C (5°F) or above 54°C (130°F). DME/DME RNP-0.3NA. Visibility reduction by helicopters NA. When local altimeter setting not received, use Portsmouth altimeter setting and increase all DA 62 feet and all MDA 80 feet, and LPV all Cats, LNAV/VNAV all Cats, LNAV Cat C, and Circling Cat B-C ¼ mile.

ODALS
 ...
MISSED APPROACH: Climb to 3000 direct ASVAY and via track 072° to CIMDO and via track 188° to LGURI and hold.

ASOS 135.275	BOSTON APP CON 125.05 269.4	UNICOM 122.7 (CTAF)
------------------------	---------------------------------------	-------------------------------



ELEV 322	TDZE 322
----------	----------



CATEGORY	A	B	C	D
LPV DA	627-1		305 (400-1)	NA
LNAV/VNAV DA	695-1¼		373 (400-1¼)	NA
LNAV MDA	860-1	538 (600-1)	860-1½ 538 (600-1½)	NA
CIRCLING	1020-1	698 (700-1)	1020-2 698 (700-2)	NA

NE-1, 22 APR 2021 to 20 MAY 2021

NE-1, 22 APR 2021 to 20 MAY 2021

VOR/DME PSM 116.5 Chan 112	APP CRS 356°	Rwy Idg TDZE Apt Elev N/A N/A 322
--	------------------------	---

VOR/DME-A
SKYHAVEN (DAW)



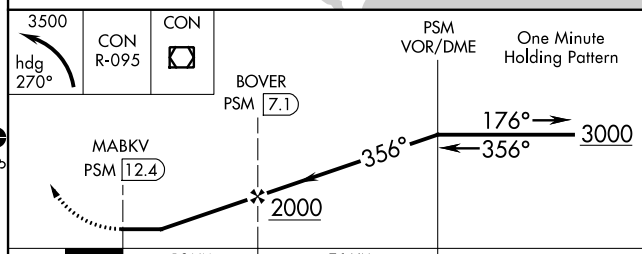
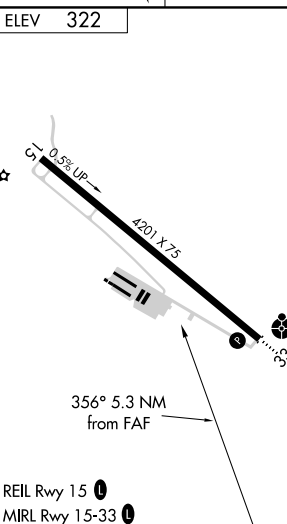
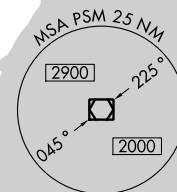
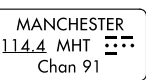
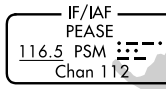
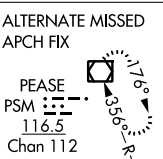
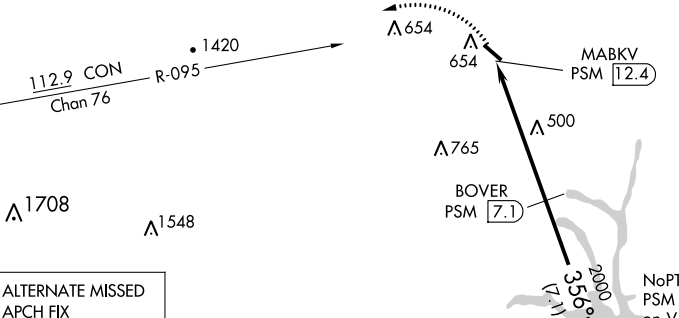
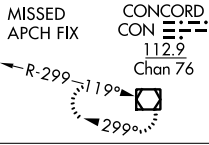
When local altimeter not received, use Portsmouth altimeter setting and increase all MDA 80 feet, and Circling visibility Cat B-C ¼ SM.

MISSED APPROACH: Climbing left turn to 3500 on heading 270° and CON VOR/DME R-095 to CON VOR/DME and hold.

ASOS
135.275

BOSTON APP CON
125.05 269.4

UNICOM
122.7 (CTAF) **0**



CATEGORY	A	B	C	D
CIRCLING	1020-1	698 (700-1)	1020-2 698 (700-2)	NA

NE-1, 22 APR 2021 to 20 MAY 2021

NE-1, 22 APR 2021 to 20 MAY 2021