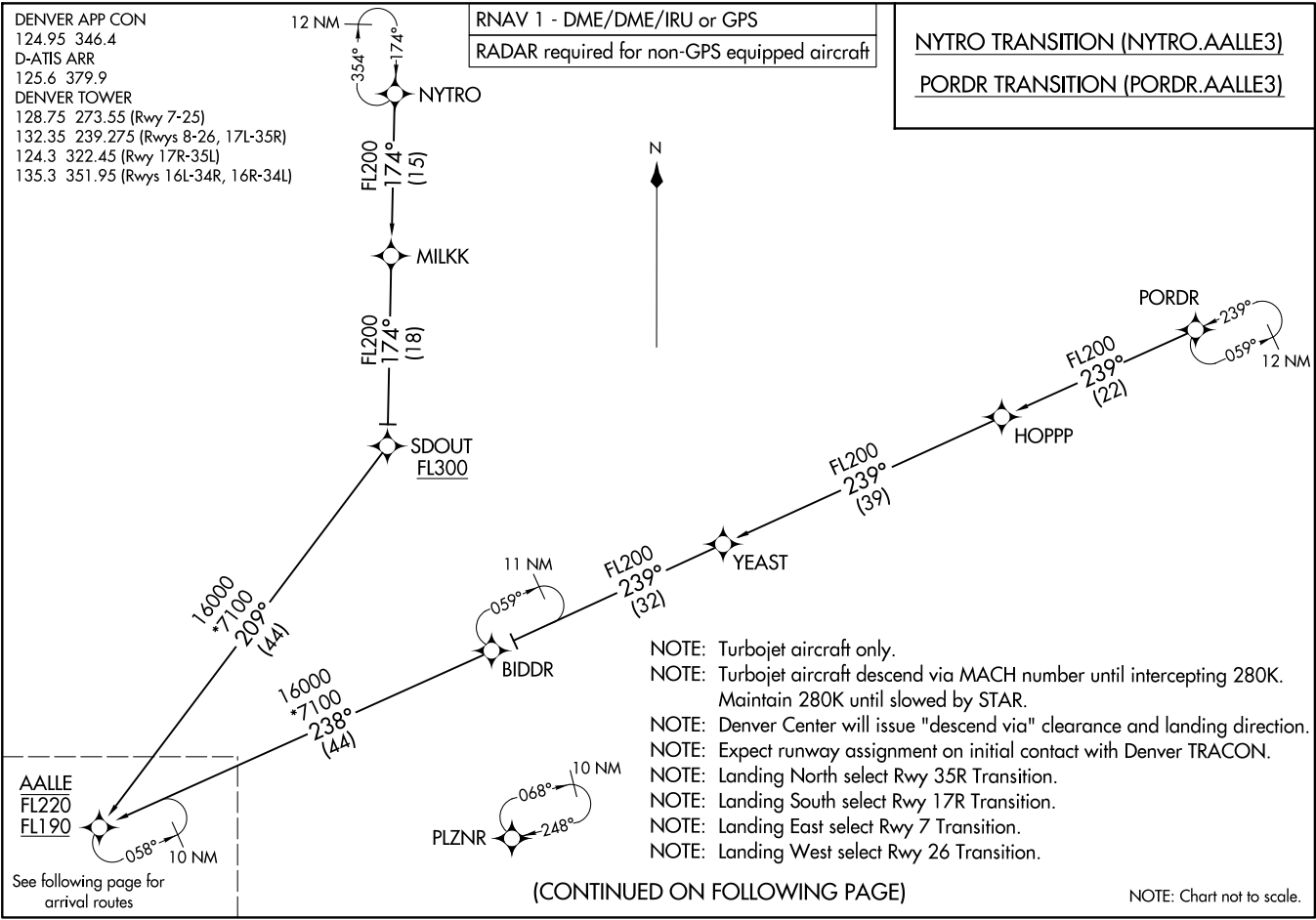


(AALLE.AALLE3) 07OCT21
AALLE THREE ARRIVAL (RNAV) Transition Routes
 DENVER, COLORADO
 DENVER INTL (DEN)

DENVER APP CON
 124.95 346.4
 D-ATIS ARR
 125.6 379.9
 DENVER TOWER
 128.75 273.55 (Rwy 7-25)
 132.35 239.275 (Rwys 8-26, 17L-35R)
 124.3 322.45 (Rwy 17R-35L)
 135.3 351.95 (Rwys 16L-34R, 16R-34L)

RNAV 1 - DME/DME/IRU or GPS
 RADAR required for non-GPS equipped aircraft

NYTRO TRANSITION (NYTRO.AALLE3)
PORDR TRANSITION (PORDR.AALLE3)



- NOTE: Turbojet aircraft only.
- NOTE: Turbojet aircraft descend via MACH number until intercepting 280K. Maintain 280K until slowed by STAR.
- NOTE: Denver Center will issue "descend via" clearance and landing direction.
- NOTE: Expect runway assignment on initial contact with Denver TRACON.
- NOTE: Landing North select Rwy 35R Transition.
- NOTE: Landing South select Rwy 17R Transition.
- NOTE: Landing East select Rwy 7 Transition.
- NOTE: Landing West select Rwy 26 Transition.

(CONTINUED ON FOLLOWING PAGE)

NOTE: Chart not to scale.

(AALLE.AALLE3) 23110
AALLE THREE ARRIVAL (RNAV) Transition Routes
 AL-9077 (FAA)
 DENVER INTL (DEN)
 DENVER, COLORADO

AALIE THREE ARRIVAL (RNAV) Arrival Routes
 (AALIE, AALIE3) 07OCT21

DENVER, COLORADO
 DENVER INTL (DEN)

DENVER APP CON
 124.95 346.4
 D-ATIS ARR
 125.6 379.9
 DENVER TOWER
 128.75 273.55 (Rwy 7-25)
 132.35 239.275 (Rwys 8-26, 17L-35R)
 124.3 322.45 (Rwy 17R-35L)
 135.3 351.95 (Rwys 16L-34R, 16R-34L)

RNAV 1 - DME/DME/IRU or GPS
 RADAR required for non-GPS equipped aircraft

AALIE
 FL220
 FL190

KIPPR
 12000 210K
 Ldg Rwys 16L/R and 17L/R

HIGUN
 14000 210K

HEDDD
 FL210 250K
 16000

CRUNK
 14000
 Ldg Rwys 25 and 26

DEELO
 17000
 15000

265°
 (9)

269°
 (14)

231°
 (16)

211° 217°
 (10) (13)

217°
 (13)

JEPHF
 15000 250K
 13000

FULLA
 15000 250K
 13000

HAITR
 11000 210K
 Ldg Rwys 7 and 8

263°

(5) HAZLT
 263°
 (10)

GRILA
 173°
 (5)

HIMOM
 11000 210K
 Ldg Rwys 34L/R

173°
 (5)

FFFAT
 73°
 (6)

DOGGG
 11000 210K
 Ldg Rwys 35L/R

73°
 (6)



- NOTE: Turbojet aircraft only.
- NOTE: Turbojet aircraft descend via MACH number until intercepting 280K. Maintain 280K until slowed by STAR.
- NOTE: Denver Center will issue "descend via" clearance and landing direction.
- NOTE: Expect runway assignment on initial contact with Denver TRACON.
- NOTE: Landing North select Rwy 35R Transition.
- NOTE: Landing South select Rwy 17R Transition.
- NOTE: Landing East select Rwy 7 Transition.
- NOTE: Landing West select Rwy 26 Transition.

(NARRATIVE ON FOLLOWING PAGE)

NOTE: Chart not to scale.

(AALIE, AALIE3) 23110
 AALIE THREE ARRIVAL (RNAV) Arrival Routes
 AL-9077 (FAA)

DENVER INTL (DEN)
 DENVER, COLORADO

ARRIVAL ROUTE DESCRIPTION

From AALLE on track 231° to cross HEDDD between 16000 and FL210 and at 250K.

LANDING RUNWAYS 7, 8: From HEDDD on track 211° to cross DEELO between 15000 and 17000, then on track 222° to cross JEPHF between 13000 and 15000 and at 250K, then on track 236° to HAZLT, then on track 263° to cross HAIR at 11000 and at 210K, then on track 263°. Expect RADAR vectors to final approach course.

LANDING RUNWAYS 16L/R, 17L/R: From HEDDD on track 269° to cross HIGUN at 14000 and at 210K, then on track 265° to cross KIPPR at 12000 and at 210K. Expect ILS or LOC RWY 16L/R or ILS or LOC RWY 17L/R approach.

LANDING RUNWAYS 25, 26: From HEDDD on track 217° to cross CRUNK at 14000, then on track 217°. Expect RADAR vectors to final approach course.

LANDING RUNWAYS 34L/R: From HEDDD on track 211° to cross DEELO between 15000 and 17000, then on track 222° to cross JEPHF between 13000 and 15000 and at 250K, then on track 236° to HAZLT, then on track 236° to GRILA, then on track 173° to cross HIMOM at 11000 and at 210K, then on track 173°. Expect RADAR vectors to final approach course.

LANDING RUNWAYS 35L/R: From HEDDD on track 211° to cross DEELO between 15000 and 17000, then on track 211° to cross FULLA between 13000 and 15000 and at 250K, then on track 211° to FFFAT, then on track 173° to cross DOGGG at 11000 and at 210K, then on track 173°. Expect RADAR vectors to final approach course.

LOST COMMUNICATIONS: In the event of lost communications prior to runway transition assignment, when DEN is landing south, execute the ILS RWY 17R, when DEN is landing north, execute the ILS RWY 35R.

SW-1, 22 FEB 2024 to 21 MAR 2024

SW-1, 22 FEB 2024 to 21 MAR 2024

RNAV 1 - DME/DME/IRU or GPS
 RADAR required for non-GPS equipped aircraft

DENVER APP CON
 126.55 269.525
 D-ATIS ARR
 125.6 379.9
 DENVER TOWER
 128.75 273.55 (Rwy 7-25)
 132.35 239.275 (Rwys 8-26, 17L-35R)
 124.3 322.45 (Rwy 17R-35L)
 135.3 351.95 (Rwys 16L-34R, 16R-34L)



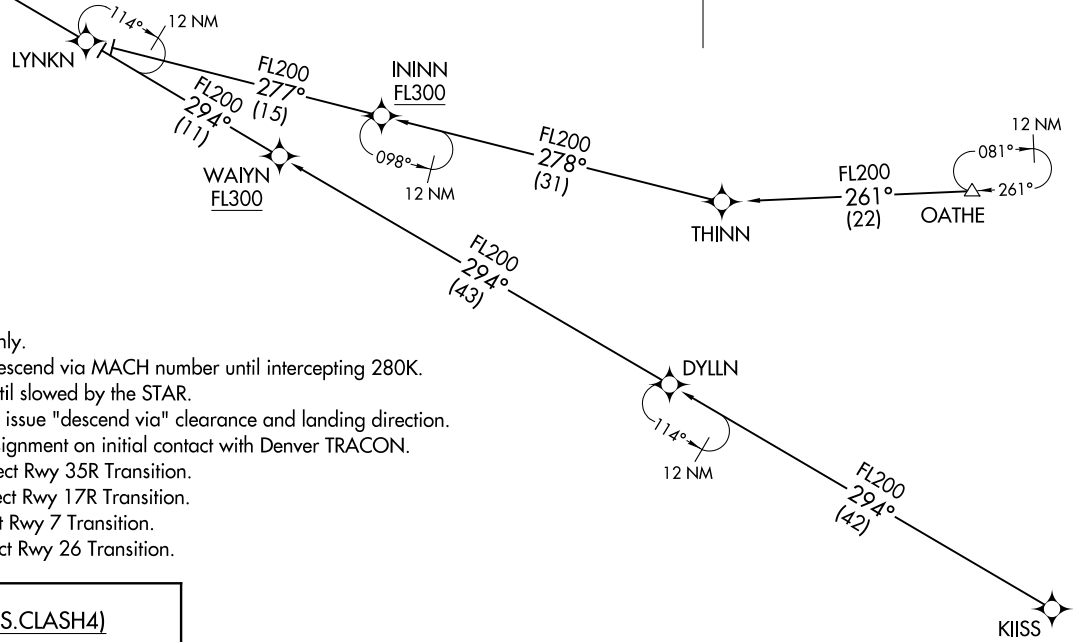
See following page
 for arrival routes

CLASH
 FL220
 FL190

10 NM

113°

15000
 *7900
 293°
 (28)



- NOTE: Turbojet aircraft only.
- NOTE: Turbojet aircraft descend via MACH number until intercepting 280K. Maintain 280K until slowed by the STAR.
- NOTE: Denver Center will issue "descend via" clearance and landing direction.
- NOTE: Expect runway assignment on initial contact with Denver TRACON.
- NOTE: Landing North select Rwy 35R Transition.
- NOTE: Landing South select Rwy 17R Transition.
- NOTE: Landing East select Rwy 7 Transition.
- NOTE: Landing West select Rwy 26 Transition.

KIISS TRANSITION (KIISS.CLASH4)

OATHE TRANSITION (OATHE.CLASH4)

(CONTINUED ON FOLLOWING PAGE)

NOTE: Chart not to scale.

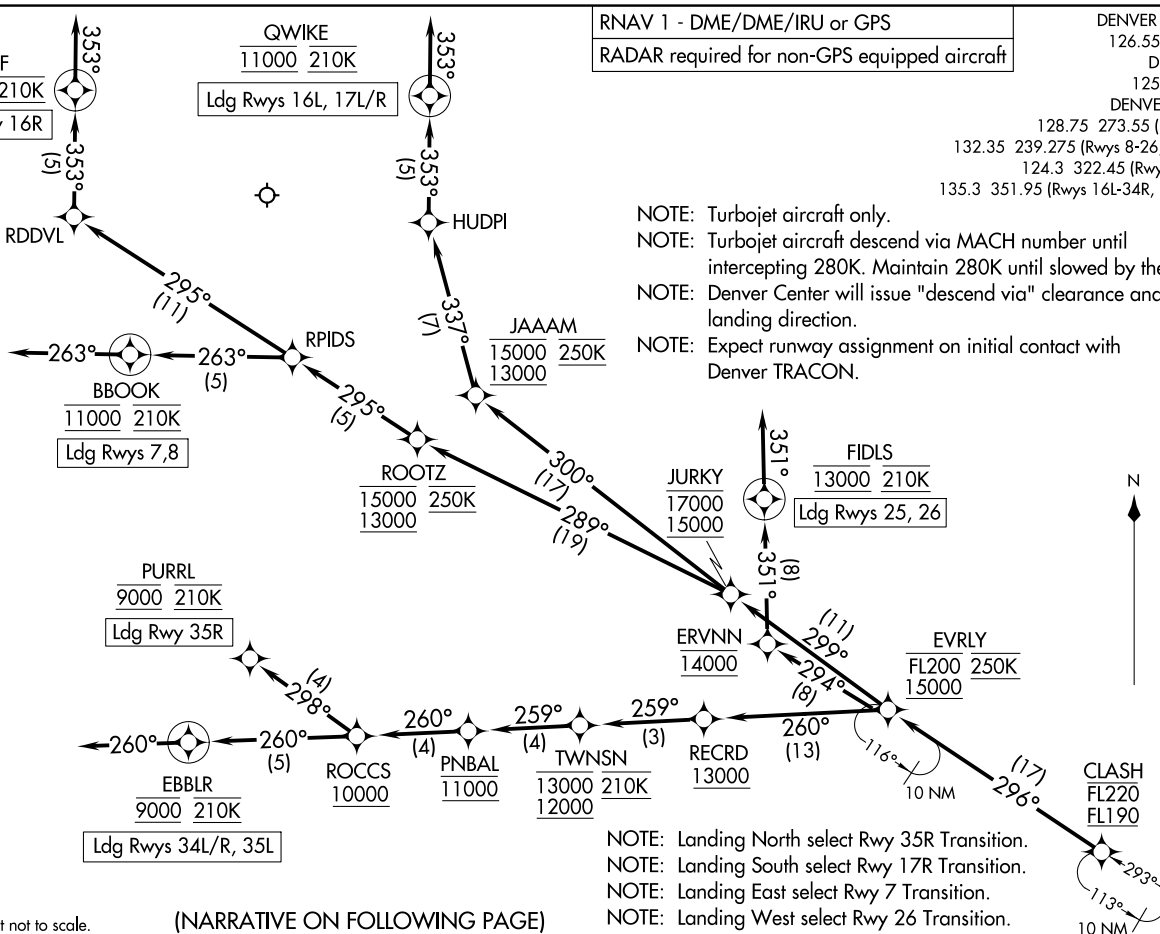
CLASH FOUR ARRIVAL (RNAV) Transition Routes
 (CLASH.CLASH4) 07OCT21
 DENVER, COLORADO
 DENVER INTL (DEN)

CLASH FOUR ARRIVAL (RNAV) Transition Routes
 (CLASH.CLASH4) 23110
 AL-9077 (FAA)
 DENVER INTL (DEN)
 DENVER, COLORADO

DENVER APP CON
126.55 269.525
D-ATIS ARR
125.6 379.9
DENVER TOWER
128.75 273.55 (Rwy 7-25)
132.35 239.275 (Rwys 8-26, 17L-35R)
124.3 322.45 (Rwy 17R-35L)
135.3 351.95 (Rwys 16L-34R, 16R-34L)

RNAV 1 - DME/DME/IRU or GPS
RADAR required for non-GPS equipped aircraft

- NOTE: Turbojet aircraft only.
- NOTE: Turbojet aircraft descend via MACH number until intercepting 280K. Maintain 280K until slowed by the STAR.
- NOTE: Denver Center will issue "descend via" clearance and landing direction.
- NOTE: Expect runway assignment on initial contact with Denver TRACON.



NOTE: Chart not to scale.

(NARRATIVE ON FOLLOWING PAGE)

- NOTE: Landing North select Rwy 35R Transition.
- NOTE: Landing South select Rwy 17R Transition.
- NOTE: Landing East select Rwy 7 Transition.
- NOTE: Landing West select Rwy 26 Transition.

ARRIVAL ROUTE DESCRIPTION

From CLASH on track 296° to cross EVRLY between 15000 and FL200 and at 250K.

LANDING RUNWAYS 7, 8: From EVRLY on track 299° to cross JURKY between 15000 and 17000, then on track 289° to cross ROOTZ between 13000 and 15000 and at 250K, then on track 295° to RPIDS, then on track 263° to cross BBOOK at 11000 and at 210K, then on track 263°. Expect RADAR vectors to final approach course.

LANDING RUNWAYS 16L, 17L/R: From EVRLY on track 299° to cross JURKY between 15000 and 17000, then on track 300° to cross JAAAM between 13000 and 15000 and at 250K, then on track 337° to HUDPI, then on track 353° to cross QWIKE at 11000 and at 210K, then on track 353°. Expect RADAR vectors to final approach course.

LANDING RUNWAY 16R: From EVRLY on track 299° to cross JURKY between 15000 and 17000, then on track 289° to cross ROOTZ between 13000 and 15000 and at 250K, then on track 295° to RPIDS, then on track 295° to RDDVL, then on track 353° to cross CLFFF at 11000 and at 210K, then on track 353°. Expect RADAR vectors to final approach course.

LANDING RUNWAYS 25, 26: From EVRLY on track 294° to cross ERVNN at 14000, then on track 351° to cross FIDLS at 13000 and at 210K, then on track 351°. Expect RADAR vectors to final approach course.

LANDING RUNWAYS 34L/R, 35L: From EVRLY on track 260° to cross RECRD at or above 13000, then on track 259° to cross TWNSN between 12000 and 13000 and at 210K, then on track 259° to cross PNBAL at 11000, then on track 260° to cross ROCCS at or above 10000, then on track 260° to cross EBBLR at 9000 and at 210K, then on track 260°. Expect RADAR vectors to final approach course.

LANDING RUNWAY 35R: From EVRLY on track 260° to cross RECRD at or above 13000, then on track 259° to cross TWNSN between 12000 and 13000 and at 210K, then on track 259° to cross PNBAL at 11000, then on track 260° to cross ROCCS at or above 10000, then on track 298° to cross PURRL at 9000 and at 210K. Expect ILS or LOC RWY 35R approach.

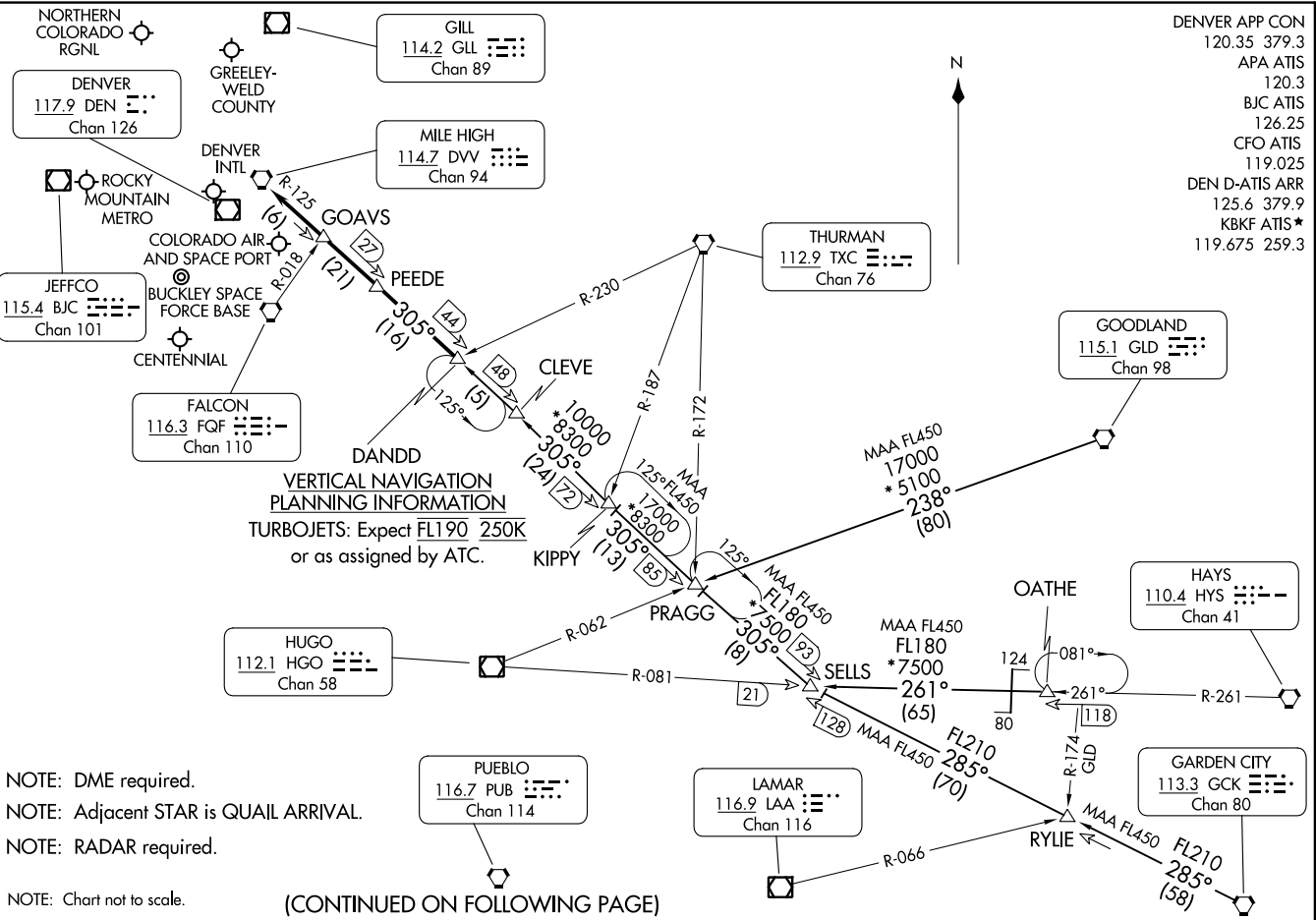
LOST COMMUNICATIONS: In the event of lost communications prior to runway transition assignment, when DEN is landing south, execute the ILS RWY 17R, when DEN is landing north, execute the ILS RWY 35R.

SW-1, 22 FEB 2024 to 21 MAR 2024

SW-1, 22 FEB 2024 to 21 MAR 2024

DANDD ONE ARRIVAL
(DANDD.DANDD1) 30ANZ0

(DANDD.DANDD1) 23334
DANDD ONE ARRIVAL



DENVER APP CON 120.35 379.3
 APA ATIS 120.3
 BJC ATIS 126.25
 CFO ATIS 119.025
 DEN D-ATIS ARR 125.6 379.9
 KBKF ATIS* 119.675 259.3

**VERTICAL NAVIGATION
 PLANNING INFORMATION**
 TURBOJETS: Expect FL190 250K
 or as assigned by ATC.

NOTE: DME required.
 NOTE: Adjacent STAR is QUAIL ARRIVAL.
 NOTE: RADAR required.
 NOTE: Chart not to scale.

(CONTINUED ON FOLLOWING PAGE)

DENVER, COLORADO

DENVER, COLORADO

AL-9077 (FAA)

ARRIVAL ROUTE DESCRIPTION

GARDEN CITY TRANSITION (GCK.DANDD1): From over GCK VORTAC on GCK R-285 and DVV R-125 to DANDD. Thence. . . .

GOODLAND TRANSITION (GLD.DANDD1): From over GLD VORTAC on GLD R-238 and DVV R-125 to DANDD. Thence. . . .

OATHE TRANSITION (OATHE.DANDD1): From over OATHE on HYS R-261 and HGO R-081 to SELLS, then on DVV R-125 to DANDD. Thence. . . .

. . . .from over DANDD on DVV R-125 to DVV VORTAC. Expect RADAR vectors to the final approach course at or before DVV VORTAC.

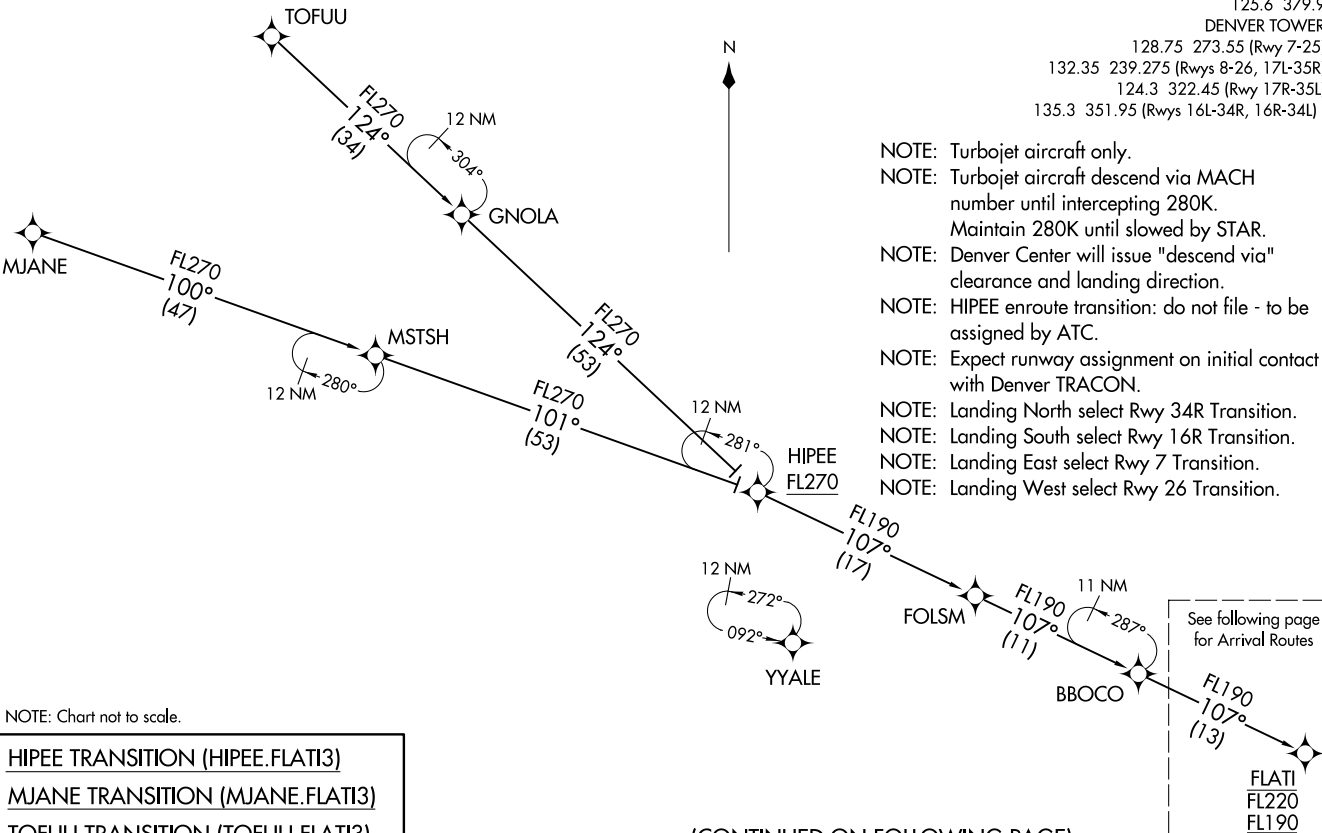
SW-1, 22 FEB 2024 to 21 MAR 2024

SW-1, 22 FEB 2024 to 21 MAR 2024

RNAV 1-DME/DME/IRU or GPS
 RADAR required for non-GPS equipped aircraft

DENVER APP CON
 119.3 307.3
 D-ATIS ARR
 125.6 379.9
 DENVER TOWER
 128.75 273.55 (Rwys 7-25)
 132.35 239.275 (Rwys 8-26, 17L-35R)
 124.3 322.45 (Rwys 17R-35L)
 135.3 351.95 (Rwys 16L-34R, 16R-34L)

- NOTE: Turbojet aircraft only.
- NOTE: Turbojet aircraft descend via MACH number until intercepting 280K. Maintain 280K until slowed by STAR.
- NOTE: Denver Center will issue "descend via" clearance and landing direction.
- NOTE: HIPEE enroute transition: do not file - to be assigned by ATC.
- NOTE: Expect runway assignment on initial contact with Denver TRACON.
- NOTE: Landing North select Rwy 34R Transition.
- NOTE: Landing South select Rwy 16R Transition.
- NOTE: Landing East select Rwy 7 Transition.
- NOTE: Landing West select Rwy 26 Transition.



NOTE: Chart not to scale.

HIPEE TRANSITION (HIPEE.FLATI3)
MJANE TRANSITION (MJANE.FLATI3)
TOFUU TRANSITION (TOFUU.FLATI3)

(CONTINUED ON FOLLOWING PAGE)

FLATI THREE ARRIVAL (RNAV) Transition Routes
 (FLATI.FLATI3) 07OCT21

DENVER, COLORADO
 DENVER INTL (DEN)

(FLATI.FLATI3) 23110
 FLATI THREE ARRIVAL (RNAV) Transition Routes
 AL-9077 (FAA)

DENVER INTL (DEN)
 DENVER, COLORADO

(FLATI.FLATI3) 23110

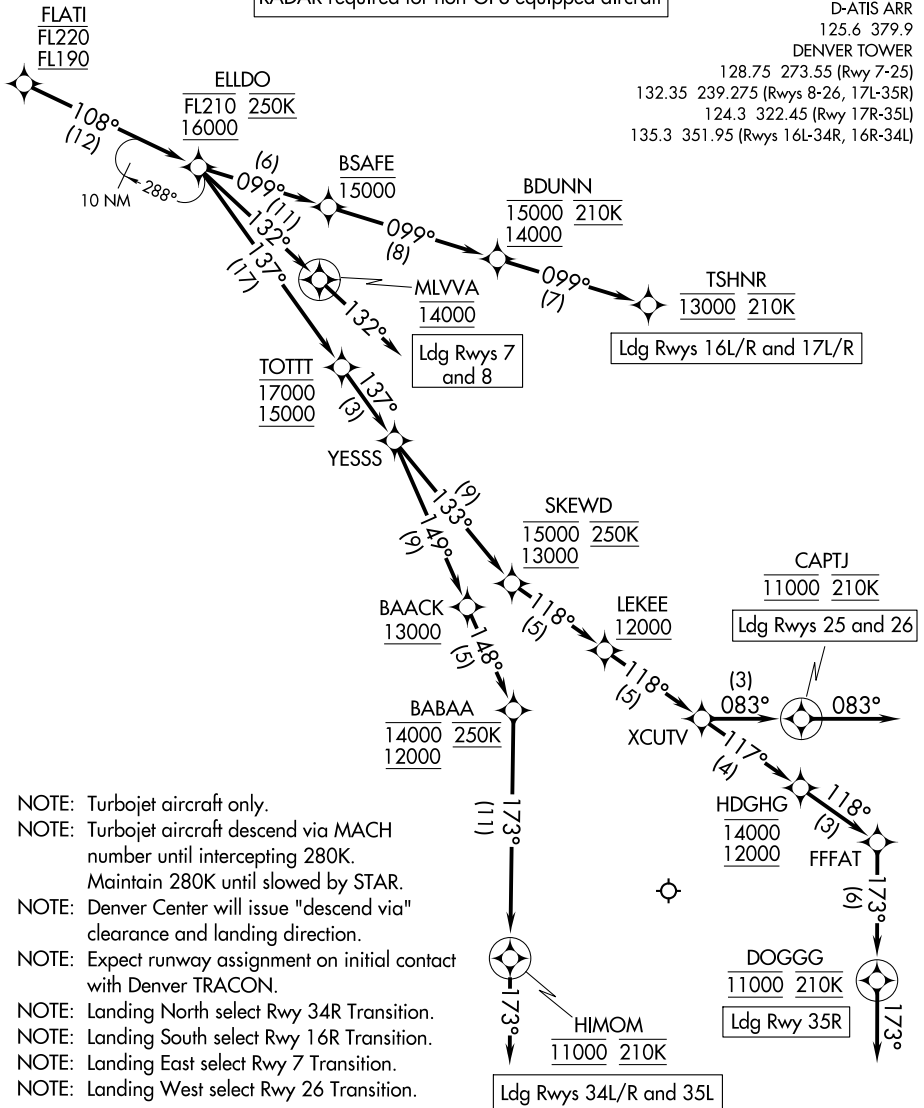
AL-9077 (FAA)

DENVER INTL (DEN)
DENVER, COLORADO

FLATI THREE ARRIVAL (RNAV) Arrival Routes

RNAV 1-DME/DME/IRU or GPS
RADAR required for non-GPS equipped aircraft

DENVER APP CON
119.3 307.3
D-ATIS ARR
125.6 379.9
DENVER TOWER
128.75 273.55 (Rwys 7-25)
132.35 239.275 (Rwys 8-26, 17L-35R)
124.3 322.45 (Rwy 17R-35L)
135.3 351.95 (Rwys 16L-34R, 16R-34L)



SW-1, 22 FEB 2024 to 21 MAR 2024

SW-1, 22 FEB 2024 to 21 MAR 2024

- NOTE: Turbojet aircraft only.
- NOTE: Turbojet aircraft descend via MACH number until intercepting 280K. Maintain 280K until slowed by STAR.
- NOTE: Denver Center will issue "descend via" clearance and landing direction.
- NOTE: Expect runway assignment on initial contact with Denver TRACON.
- NOTE: Landing North select Rwy 34R Transition.
- NOTE: Landing South select Rwy 16R Transition.
- NOTE: Landing East select Rwy 7 Transition.
- NOTE: Landing West select Rwy 26 Transition.

(NARRATIVE ON FOLLOWING PAGE)

NOTE: Chart not to scale.

FLATI THREE ARRIVAL (RNAV) Arrival Routes

(FLATI.FLATI3) 07OCT21

DENVER, COLORADO
DENVER INTL (DEN)

ARRIVAL ROUTE DESCRIPTION

From FLATI on track 108° to cross ELLDO between 16000 and FL210 and at 250K.

LANDING RUNWAYS 7, 8: From ELLDO on track 132° to cross MLVVA at 14000, then on track 132°. Expect RADAR vectors to final approach course.

LANDING RUNWAYS 16L/R: From ELLDO on track 099° to cross BSAFE at or below 15000, then on track 099° to cross BDUNN between 14000 and 15000 and at 210K, then on track 099° to cross TSHNR at 13000 and at 210K. Expect ILS or LOC RWY 16L/R approach.

LANDING RUNWAYS 17L/R: From ELLDO on track 099° to cross BSAFE at or below 15000, then on track 099° to cross BDUNN between 14000 and 15000 and at 210K, then on track 099° to cross TSHNR at 13000 and at 210K. Expect ILS or LOC RWY 17L/R approach.

LANDING RUNWAYS 25, 26: From ELLDO on track 137° to cross TOTTT between 15000 and 17000, then on track 137° to YESSS, then on track 133° to cross SKEWD between 13000 and 15000 and at 250K, then on track 118° to cross LEKEE at or above 12000, then on track 118° to XCUTV, then on track 083° to cross CAPTJ at 11000 and at 210K, then on track 083°. Expect RADAR vectors to final approach course.

LANDING RUNWAYS 34L/R, 35L: From ELLDO on track 137° to cross TOTTT between 15000 and 17000, then on track 137° to YESSS, then on track 149° to cross BAACK at or above 13000, then on track 148° to cross BABAA between 12000 and 14000 and at 250K, then on track 173° to cross HIMOM at 11000 and at 210K, then on track 173°. Expect RADAR vectors to final approach course.

LANDING RUNWAY 35R: From ELLDO on track 137° to cross TOTTT between 15000 and 17000, then on track 137° to YESSS, then on track 133° to cross SKEWD between 13000 and 15000 and at 250K, then on track 118° to cross LEKEE at or above 12000, then on track 118° to XCUTV, then on track 117° to cross HDGHG between 12000 and 14000, then on track 118° to FFFAT, then on track 173° to cross DOGGG at 11000 and at 210K, then on track 173°. Expect RADAR vectors to final approach course.

LOST COMMUNICATIONS: In the event of lost communications prior to runway transition assignment, when DEN is landing south, execute the ILS RWY 16R, when DEN is landing north, execute the ILS RWY 34R.

SW-1, 22 FEB 2024 to 21 MAR 2024

SW-1, 22 FEB 2024 to 21 MAR 2024

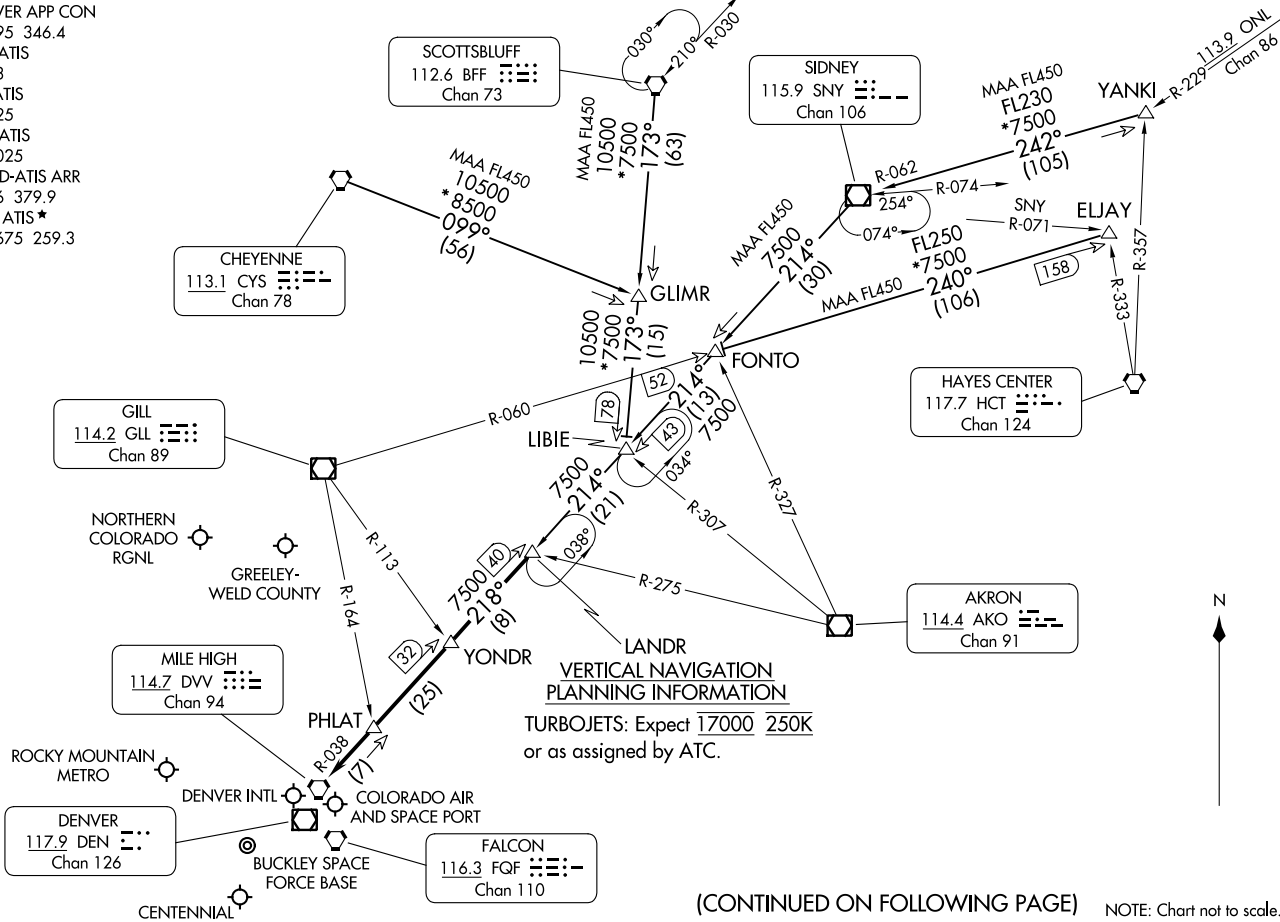
LANDR THREE ARRIVAL
(LANDR.LANDR3) 20APR23

(LANDR.LANDR3) 23334
LANDR THREE ARRIVAL

AL-9077 (FAA)

DENVER, COLORADO

DENVER APP CON
124.95 346.4
APA ATIS
120.3
BJC ATIS
126.25
CFO ATIS
119.025
DEN D-ATIS ARR
125.6 379.9
KBKF ATIS*
119.675 259.3



DENVER, COLORADO

(CONTINUED ON FOLLOWING PAGE)

NOTE: Chart not to scale.

ARRIVAL ROUTE DESCRIPTION

CHEYENNE TRANSITION (CYS.LANDR3): From over CYS VORTAC on CYS R-099 and BFF R-173 to LIBIE, then on SNY R-214 and DVV R-038 to LANDR. Thence. . . .

ELJAY TRANSITION (ELJAY.LANDR3): From over ELJAY on GLL R-060 to FONTO, then on SNY R-214 and DVV R-038 to LANDR. Thence. . . .

SCOTTSBLUFF TRANSITION (BFF.LANDR3): From over BFF VORTAC on BFF R-173 to LIBIE, then on SNY R-214 and DVV R-038 to LANDR. Thence. . . .

SIDNEY TRANSITION (SNY.LANDR3): From over SNY VOR/DME on SNY R-214 to FONTO, then on SNY R-214 and DVV R-038 to LANDR. Thence. . . .

YANKI TRANSITION (YANKI.LANDR3): From over YANKI on SNY R-062 to SNY VOR/DME, then on SNY R-214 and DVV R-038 to LANDR. Thence. . . .

. . . .from over LANDR on DVV R-038 to DVV VORTAC. Expect RADAR vectors to the final approach course at or before DVV VORTAC.

SW-1, 22 FEB 2024 to 21 MAR 2024

SW-1, 22 FEB 2024 to 21 MAR 2024

LARKS THREE ARRIVAL

AL-9077 (FAA)

DENVER, COLORADO

DENVER APP CON
 120.35 379.3
 APA ATIS
 120.3
 BJC ATIS
 126.25
 CFO ATIS
 119.025
 DEN D-ATIS ARR
 125.6 379.9
 FNL ATIS
 135.075
 KBKF ATIS*
 119.675 259.3

RED TABLE
 113.0 DBL
 Chan 77

DENVER
 117.9 DEN
 Chan 126

JEFFCO
 115.4 BJC
 Chan 101

GILL
 114.2 GLL
 Chan 89

NORTHERN
 COLORADO
 RGNL

ROCKY
 MOUNTAIN
 METRO

GREELEY-
 WELD COUNTY

COLORADO
 AIR AND
 SPACE
 PORT

BUCKLEY
 SPACE FORCE
 BASE

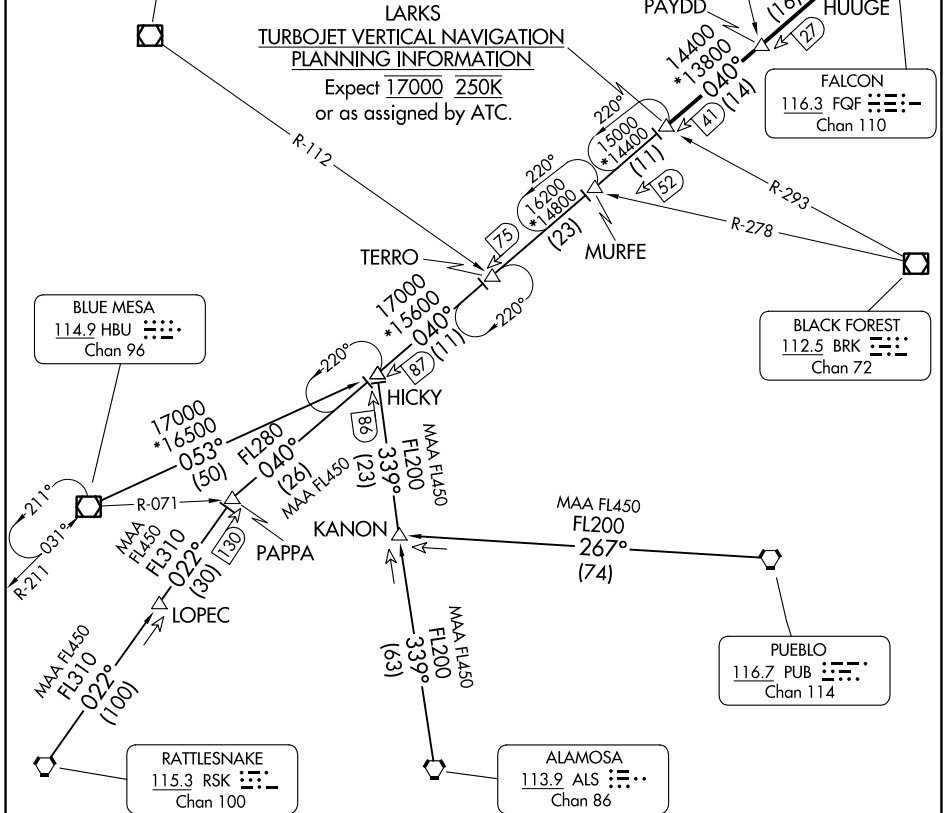
FALCON
 116.3 FGF
 Chan 110

BLACK FOREST
 112.5 BRK
 Chan 72

PUEBLO
 116.7 PUB
 Chan 114

BLUE MESA
 114.9 HBU
 Chan 96

LARKS
TURBOJET VERTICAL NAVIGATION
PLANNING INFORMATION
 Expect 17000 250K
 or as assigned by ATC.



SW-1, 22 FEB 2024 to 21 MAR 2024

SW-1, 22 FEB 2024 to 21 MAR 2024

NOTE: Adjacent STAR is POWDR ARRIVAL.
 NOTE: RADAR required.
 NOTE: Chart not to scale.

(CONTINUED ON FOLLOWING PAGE)

LARKS THREE ARRIVAL

DENVER, COLORADO

ARRIVAL ROUTE DESCRIPTION

ALAMOSA TRANSITION (ALS.LARKS3): From over ALS VORTAC on ALS R-339 and FQF R-220 to LARKS. Thence. . . .

BLUE MESA TRANSITION (HBU.LARKS3): From over HBU VOR/DME on HBU R-053 and FQF R-220 to LARKS. Thence. . . .

LOPEC TRANSITION (LOPEC.LARKS3): From over LOPEC on RSK R-022 and FQF R-220 to LARKS. Thence. . . .

PUEBLO TRANSITION (PUB.LARKS3): From over PUB VORTAC on PUB R-267 to KANON, then on ALS R-339 and FQF R-220 to LARKS. Thence. . . .

RATTLESNAKE TRANSITION (RSK.LARKS3): From over RSK VORTAC on RSK R-022 and FQF R-220 to LARKS. Thence. . . .

. . . .from over LARKS on FQF R-220 to FALCON (FQF) VORTAC. Expect RADAR vectors to the final approach course at or before FALCON (FQF) VORTAC.

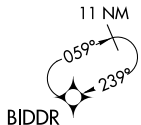
SW-1, 22 FEB 2024 to 21 MAR 2024

SW-1, 22 FEB 2024 to 21 MAR 2024

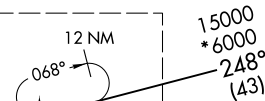
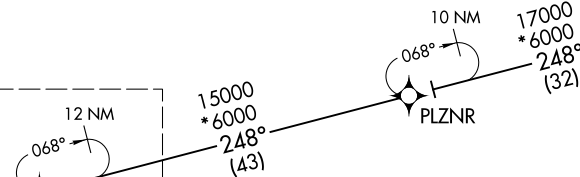
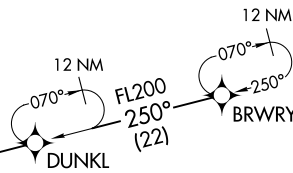
RNAV 1 - DME/DME/IRU or GPS

RADAR required for non-GPS equipped aircraft

DENVER APP CON
124.95 346.4
D-ATIS ARR
125.6 379.9
DENVER TOWER
128.75 273.55 (Rwy 7-25)
132.35 239.275 (Rwys 8-26, 17L-35R)
124.3 322.45 (Rwy 17R-35L)
135.3 351.95 (Rwys 16L-34R, 16R-34L)



N



LAWGR
FL220
FL190

See following page
for arrival routes

- NOTE: Turbojet aircraft only.
- NOTE: Turbojet aircraft descend via Mach number until intercepting 280K. Maintain 280K until slowed by STAR.
- NOTE: Denver Center will issue "descend via" clearance and landing direction.
- NOTE: Landing north select Rwy 35R transition.
- NOTE: Landing south select Rwy 17R transition.
- NOTE: Landing east select Rwy 7 transition.
- NOTE: Landing west select Rwy 26 transition.
- NOTE: Expect runway assignment on initial contact with Denver TRACON.

BRWRY TRANSITION (BRWRY.LAWGR3)

(CONTINUED ON FOLLOWING PAGE)

NOTE: Chart not to scale.

LAWGR THREE ARRIVAL (RNAV)
(LAWGR.LAWGR3) 07OCT21

Transition Routes

DENVER COLORADO
DENVER INTL (DEN)

(LAWGR.LAWGR3) 23110
LAWGR THREE ARRIVAL (RNAV)

Transition Routes
AL-9077 (FAA)

DENVER INTL (DEN)
DENVER COLORADO

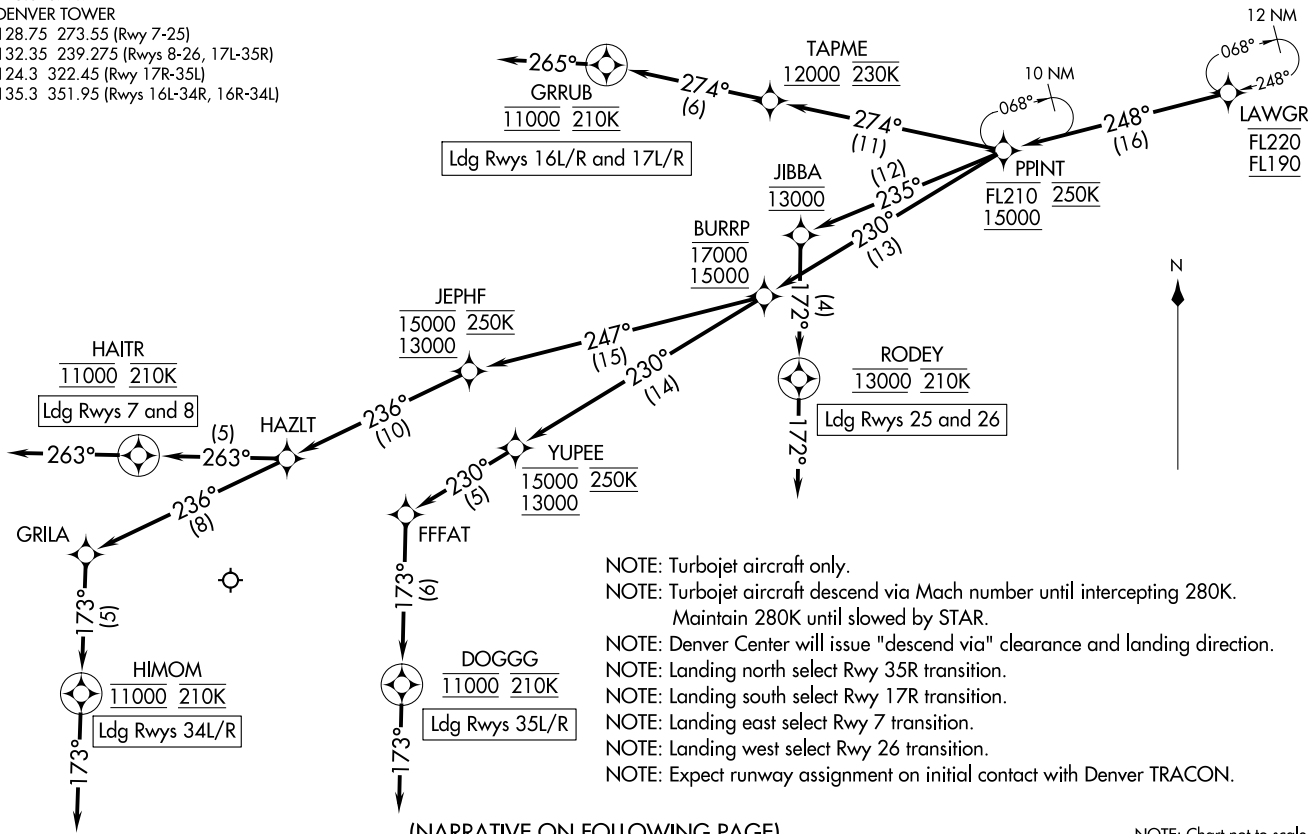
LAWGR THREE ARRIVAL (RNAV) Arrival Routes
 (LAWGR.LAWGR3) 07OCT121

LAWGR THREE ARRIVAL (RNAV) Arrival Routes

DENVER, COLORADO
 DENVER INTL (DEN)

DENVER APP CON
 124.95 346.4
 D-ATIS ARR
 125.6 379.9
 DENVER TOWER
 128.75 273.55 (Rwy 7-25)
 132.35 239.275 (Rwys 8-26, 17L-35R)
 124.3 322.45 (Rwy 17R-35L)
 135.3 351.95 (Rwys 16L-34R, 16R-34L)

RNAV 1 - DME/DME/IRU or GPS
 RADAR required for non-GPS equipped aircraft



NOTE: Turbojet aircraft only.
 NOTE: Turbojet aircraft descend via Mach number until intercepting 280K. Maintain 280K until slowed by STAR.
 NOTE: Denver Center will issue "descend via" clearance and landing direction.
 NOTE: Landing north select Rwy 35R transition.
 NOTE: Landing south select Rwy 17R transition.
 NOTE: Landing east select Rwy 7 transition.
 NOTE: Landing west select Rwy 26 transition.
 NOTE: Expect runway assignment on initial contact with Denver TRACON.

(NARRATIVE ON FOLLOWING PAGE)

NOTE: Chart not to scale.

(LAWGR.LAWGR3) 23110
 LAWGR THREE ARRIVAL (RNAV) Arrival Routes

AL-9077 (FAA)

DENVER INTL (DEN)
 DENVER, COLORADO

ARRIVAL ROUTE DESCRIPTION

From LAWGR on track 248° to cross PPINT between 15000 and FL210 and at 250K.

LANDING RUNWAYS 7, 8: From PPINT on track 230° to cross BURRP between 15000 and 17000, then on track 247° to cross JEPHF between 13000 and 15000 and at 250K, then on track 236° to HAZLT, then on track 263° to cross HAIR at 11000 and at 210K, then on track 263°. Expect RADAR vectors to final approach course.

LANDING RUNWAYS 16L/R, 17L/R: From PPINT on track 274° to cross TAPME at or above 12000 and at 230K, then on track 274° to cross GRRUB at 11000 and at 210K, then on track 265°. Expect RADAR vectors to final approach course.

LANDING RUNWAYS 25, 26: From PPINT on track 235° to cross JIBBA at 13000, then on track 172° to cross RODEY at 13000 and at 210K, then on track 172°. Expect RADAR vectors to final approach course.

LANDING RUNWAYS 34L/R: From PPINT on track 230° to cross BURRP between 15000 and 17000, then on track 247° to cross JEPHF between 13000 and 15000 and at 250K, then on track 236° to HAZLT, then on track 236° to GRILA, then on track 173° to cross HIMOM at 11000 and at 210K, then on track 173°. Expect RADAR vectors to final approach course.

LANDING RUNWAYS 35L/R: From PPINT on track 230° to cross BURRP between 15000 and 17000, then on track 230° to cross YUPEE between 13000 and 15000 and at 250K, then on track 230° to FFFAT, then on track 173° to cross DOGGG at 11000 and at 210K, then on track 173°. Expect RADAR vectors to final approach course.

LOST COMMUNICATIONS: In the event of lost communications prior to runway transition assignment, when DEN is landing south, execute the ILS RWY 17R, when DEN is landing north, execute the ILS RWY 35R.

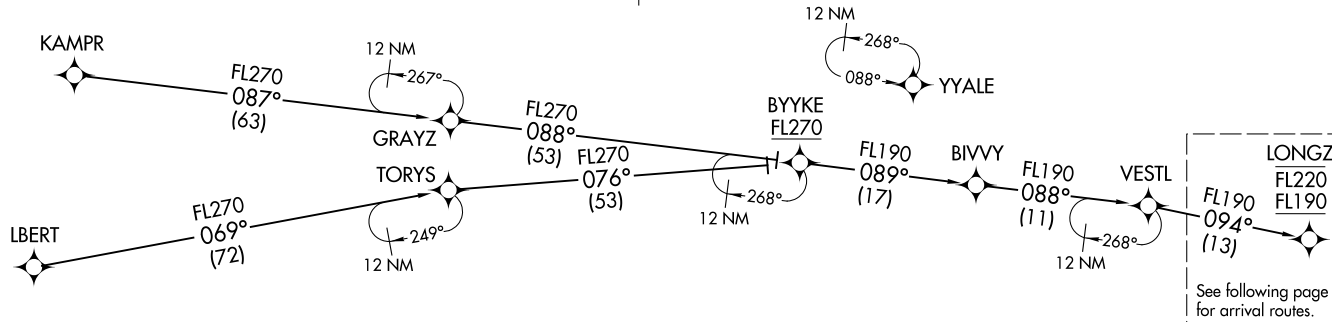
SW-1, 22 FEB 2024 to 21 MAR 2024

SW-1, 22 FEB 2024 to 21 MAR 2024

RNAV 1 - DME/DME/IRU or GPS
 RADAR required for non-GPS equipped aircraft

DENVER APP CON
 119.3 307.3
 D-ATIS ARR
 125.6 379.9
 DENVER TOWER
 128.75 273.55 (Rwy 7-25)
 132.35 239.275 (Rwys 8-26, 17L-35R)
 124.3 322.45 (Rwy 17R-35L)
 135.3 351.95 (Rwys 16L-34R, 16R-34L)

N



- NOTE: Turbojet aircraft only.
- NOTE: Turbojet aircraft descend via MACH number until intercepting 280K. Maintain 280K until slowed by the STAR.
- NOTE: Denver Center will issue "descend via" clearance and landing direction.
- NOTE: BYYKE enroute transition: Do not file - to be assigned by ATC.
- NOTE: Expect runway assignment on initial contact with Denver TRACON.
- NOTE: Landing North select Rwy 34R Transition.
- NOTE: Landing South select Rwy 16R Transition.
- NOTE: Landing East select Rwy 7 Transition.
- NOTE: Landing West select Rwy 26 Transition.

BYYKE TRANSITION (BYYKE.LONGZ2)
KAMPR TRANSITION (KAMPR.LONGZ2)
LBERT TRANSITION (LBERT.LONGZ2)

(CONTINUED ON FOLLOWING PAGE)

NOTE: Chart not to scale.

LONGZ TWO ARRIVAL (RNAV) Transition Routes
 (LONGZ.LONGZ2) 07OCT21

DENVER, COLORADO
 DENVER INTL (DEN)

(LONGZ.LONGZ2) 23110
 LONGZ TWO ARRIVAL (RNAV) Transition Routes
 AL-9077 (FAA)

DENVER INTL (DEN)
 DENVER, COLORADO

LONGZ TWO ARRIVAL (RNAV) (LONGZ, LONGZ2) 070CTZ1

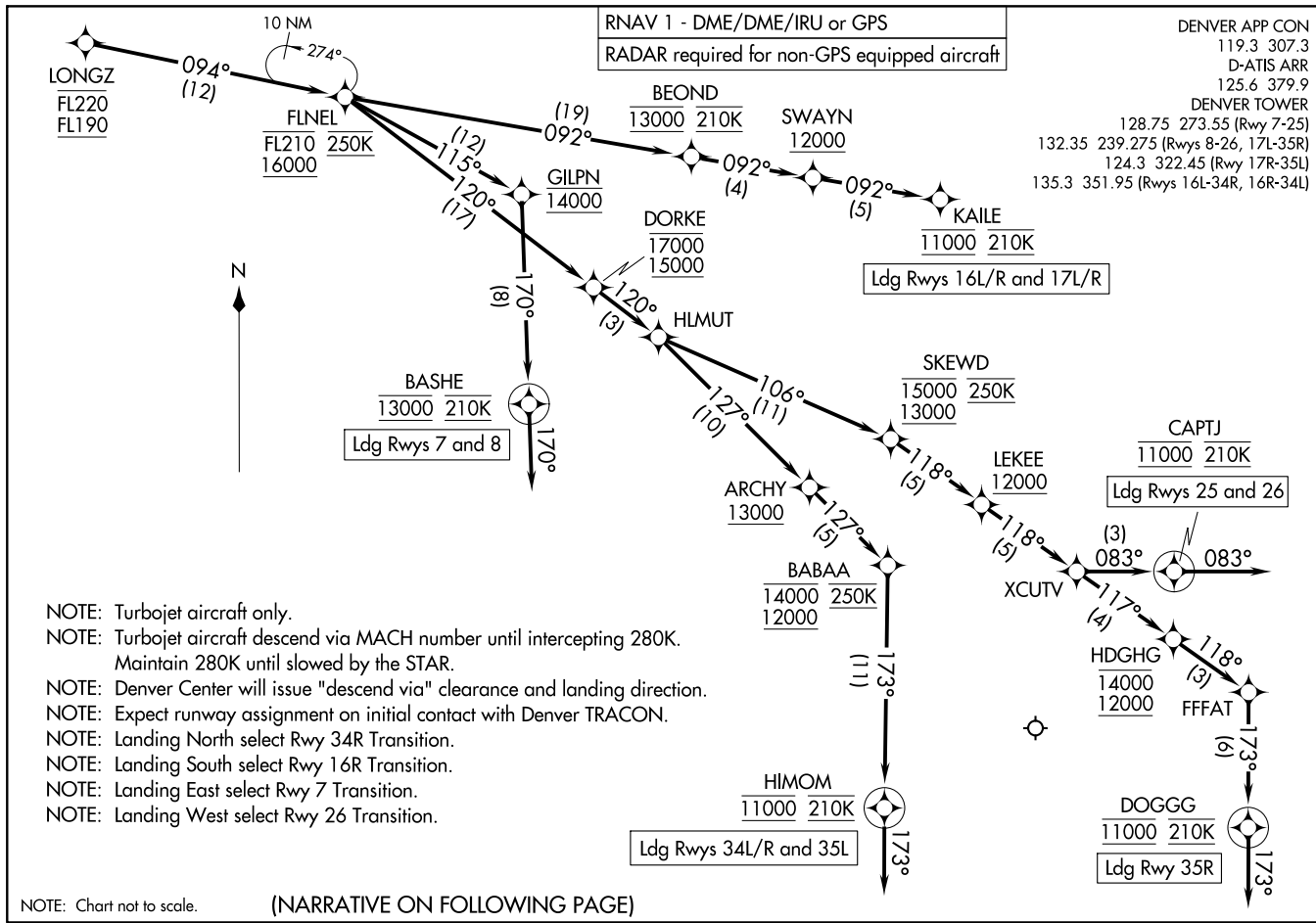
LONGZ TWO ARRIVAL (RNAV) Arrival Routes

DENVER, COLORADO DENVER INTL (DEN)

(LONGZ, LONGZ2) 23110

AL-9077 (FAA) Arrival Routes

DENVER INTL (DEN) DENVER, COLORADO



ARRIVAL ROUTE DESCRIPTION

From LONGZ on track 094° to cross FLNEL between 16000 and FL210 and at 250K.

LANDING RUNWAYS 7, 8: From FLNEL on track 115° to cross GILPN at 14000, then on track 170° to cross BASHE at 13000 and at 210K, then on track 170°. Expect RADAR vectors to final approach course.

LANDING RUNWAYS 16L/R, 17L/R: From FLNEL on track 092° to cross BEOND at 13000 and at 210K, then on track 092° to cross SWAYN at or above 12000, then on track 092° to cross KAILE at 11000 and at 210K. Expect ILS or LOC RWY 16L/R or ILS or LOC 17L/R approach.

LANDING RUNWAYS 25, 26: From FLNEL on track 120° to cross DORKE between 15000 and 17000, then on track 120° to HLMUT, then on track 106° to cross SKEWD between 13000 and 15000 and at 250K, then on track 118° to cross LEKEE at or above 12000, then on track 118° to XCUTV, then on track 083° to cross CAPTJ at 11000 and at 210K, then on track 083°. Expect RADAR vectors to final approach course.

LANDING RUNWAYS 34L/R, 35L: From FLNEL on track 120° to cross DORKE between 15000 and 17000, then on track 120° to HLMUT, then on track 127° to cross ARCHY at or above 13000, then on track 127° to cross BABAA between 12000 and 14000 and at 250K, then on track 173° to cross HIMOM at 11000 and at 210K, then on track 173°. Expect RADAR vectors to final approach course.

LANDING RUNWAY 35R: From FLNEL on track 120° to cross DORKE between 15000 and 17000, then on track 120° to HLMUT, then on track 106° to cross SKEWD between 13000 and 15000 and at 250K, then on track 118° to cross LEKEE at or above 12000, then on track 118° to XCUTV, then on track 117° to cross HDGHG between 12000 and 14000, then on track 118° to FFFAT, then on track 173° to cross DOGGG at 11000 and at 210K, then on track 173°. Expect RADAR vectors to final approach course.

LOST COMMUNICATIONS: In the event of lost communications prior to runway transition assignment, when DEN is landing south, execute the ILS RWY 16R, when DEN is landing north, execute the ILS RWY 34R.

SW-1, 22 FEB 2024 to 21 MAR 2024

SW-1, 22 FEB 2024 to 21 MAR 2024

(N11XX.N11XX3) 23110

AL-9077 (FAA)

DENVER INTL (DEN)
DENVER, COLORADO

N11XX THREE ARRIVAL (RNAV) Transition Routes

RNAV 1 - DME/DME/IRU or GPS

RADAR required for non-GPS equipped aircraft

DENVER APP CON

126.55 269.525

D-ATIS ARR

125.6 379.9

DENVER TOWER

128.75 273.55 (Rwy 7-25)

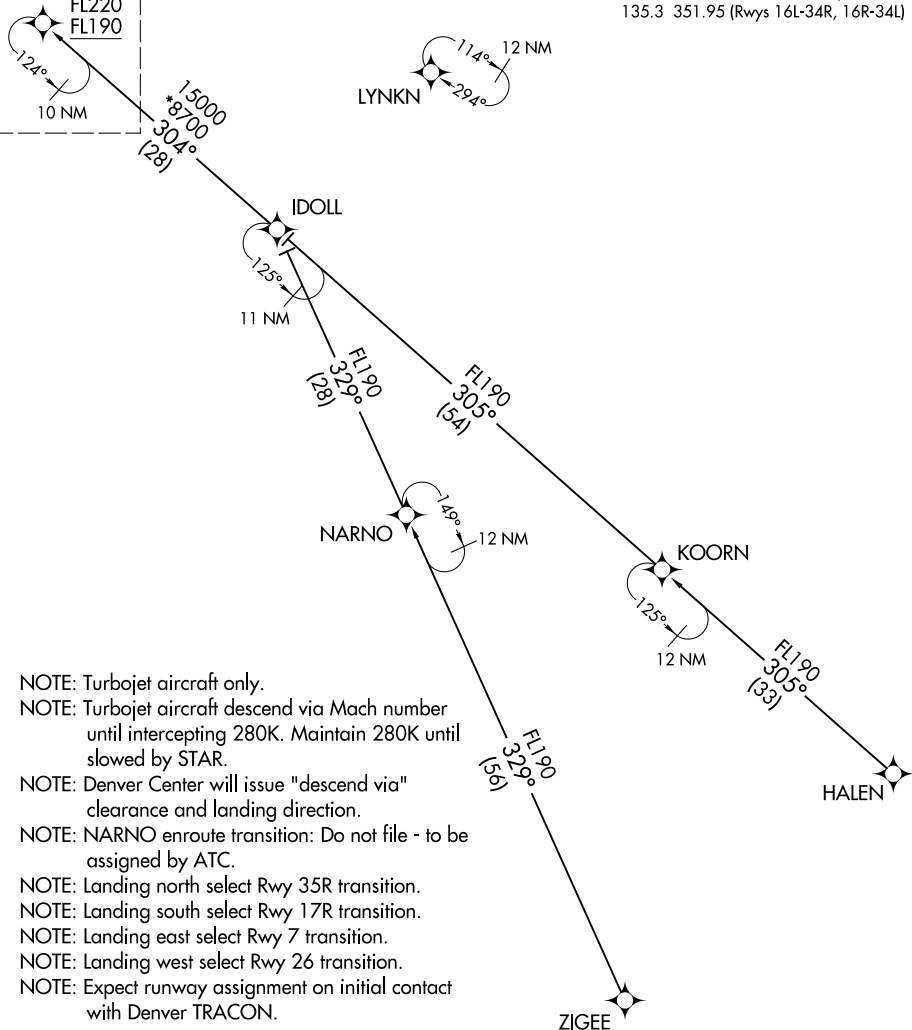
132.35 239.275 (Rwys 8-26, 17L-35R)

124.3 322.45 (Rwy 17R-35L)

135.3 351.95 (Rwys 16L-34R, 16R-34L)

See following page
for arrival routes

N11XX
FL220
FL190



SW-1, 22 FEB 2024 to 21 MAR 2024

SW-1, 22 FEB 2024 to 21 MAR 2024

- NOTE: Turbojet aircraft only.
- NOTE: Turbojet aircraft descend via Mach number until intercepting 280K. Maintain 280K until slowed by STAR.
- NOTE: Denver Center will issue "descend via" clearance and landing direction.
- NOTE: NARNO enroute transition: Do not file - to be assigned by ATC.
- NOTE: Landing north select Rwy 35R transition.
- NOTE: Landing south select Rwy 17R transition.
- NOTE: Landing east select Rwy 7 transition.
- NOTE: Landing west select Rwy 26 transition.
- NOTE: Expect runway assignment on initial contact with Denver TRACON.

HALEN TRANSITION (HALEN.N11XX3)

NARNO TRANSITION (NARNO.N11XX3)

ZIGEE TRANSITION (ZIGEE.N11XX3)

(CONTINUED ON FOLLOWING PAGE)

NOTE: Chart not to scale.

N11XX THREE ARRIVAL (RNAV) Transition Routes

(N11XX.N11XX3) 07OCT21

DENVER, COLORADO
DENVER INTL (DEN)

(N11XX.N11XX3) 23110

AL-9077 (FAA)

DENVER INTL (DEN)
DENVER, COLORADO

N11XX THREE ARRIVAL (RNAV) Arrival Routes

RNAV 1 - DME/DME/IRU or GPS

RADAR required for non-GPS equipped aircraft

DENVER APP CON

126.55 269.525

D-ATIS ARR

125.6 379.9

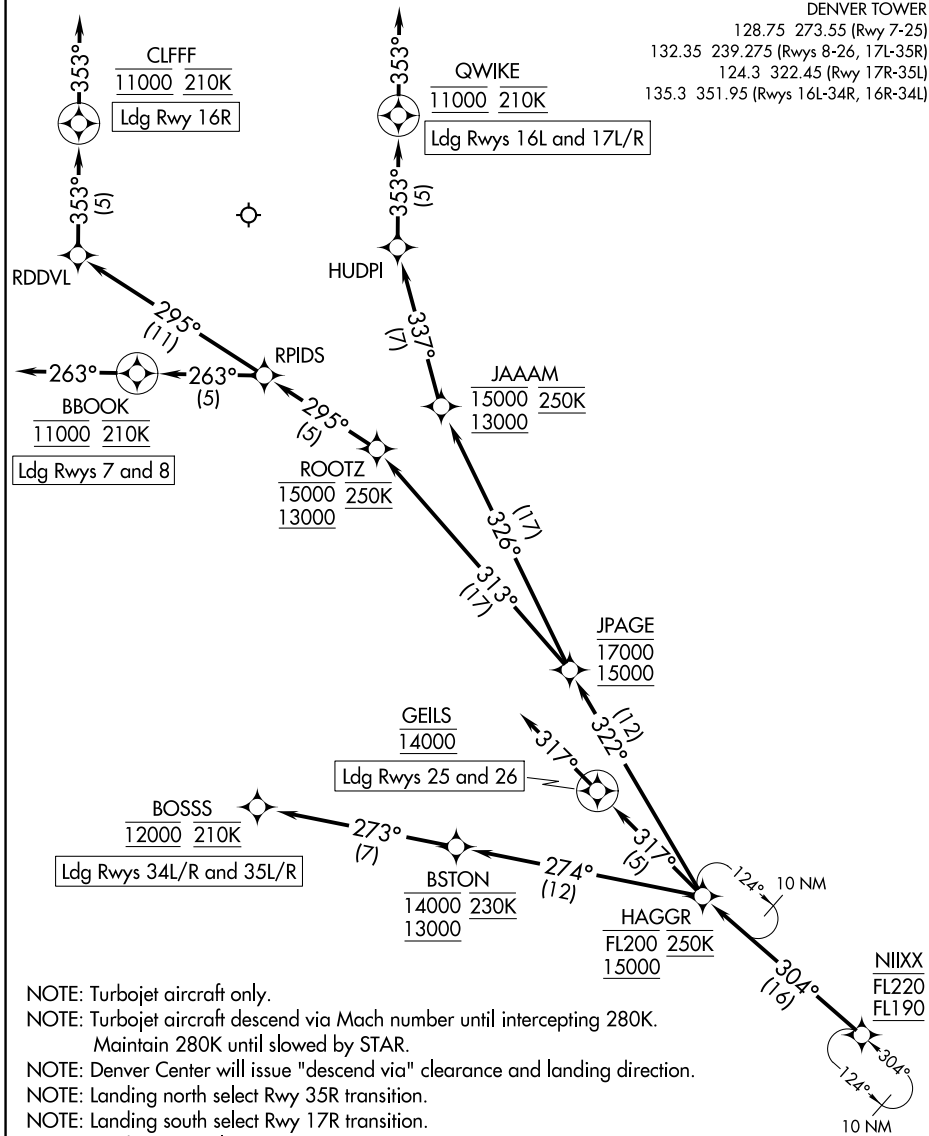
DENVER TOWER

128.75 273.55 (Rwys 7-25)

132.35 239.275 (Rwys 8-26, 17L-35R)

124.3 322.45 (Rwy 17R-35L)

135.3 351.95 (Rwys 16L-34R, 16R-34L)



SW-1, 22 FEB 2024 to 21 MAR 2024

SW-1, 22 FEB 2024 to 21 MAR 2024

- NOTE: Turbojet aircraft only.
- NOTE: Turbojet aircraft descend via Mach number until intercepting 280K. Maintain 280K until slowed by STAR.
- NOTE: Denver Center will issue "descend via" clearance and landing direction.
- NOTE: Landing north select Rwy 35R transition.
- NOTE: Landing south select Rwy 17R transition.
- NOTE: Landing east select Rwy 7 transition.
- NOTE: Landing west select Rwy 26 transition.
- NOTE: Expect runway assignment on initial contact with Denver TRACON.

(NARRATIVE ON FOLLOWING PAGE)

NOTE: Chart not to scale.

N11XX THREE ARRIVAL (RNAV) Arrival Routes

DENVER, COLORADO
DENVER INTL (DEN)

(N11XX.N11XX3) 07OCT21

ARRIVAL ROUTE DESCRIPTION

From N11XX on track 304° to cross HAGGR between 15000 and FL200 and at 250K.

LANDING RUNWAYS 7, 8: From HAGGR on track 322° to cross JPAGE between 15000 and 17000, then on track 313° to cross ROOTZ between 13000 and 15000 and at 250K, then on track 295° to RPIDS, then on track 263° to cross BBOOK at 11000 and at 210K, then on track 263°. Expect RADAR vectors to final approach course.

LANDING RUNWAYS 16L, 17L/R: From HAGGR on track 322° to cross JPAGE between 15000 and 17000, then on track 326° to cross JAAAM between 13000 and 15000 and at 250K, then on track 337° to HUDPI, then on track 353° to cross QWIKE at 11000 and at 210K, then on track 353°. Expect RADAR vectors to final approach course.

LANDING RUNWAY 16R: From HAGGR on track 322° to cross JPAGE between 15000 and 17000, then on track 313° to cross ROOTZ between 13000 and 15000 and at 250K, then on track 295° to RPIDS, then on track 295° to RDDVL, then on track 353° to cross CLFF at 11000 and at 210K, then on track 353°. Expect RADAR vectors to final approach course.

LANDING RUNWAYS 25, 26: From HAGGR on track 317° to cross GEILS at 14000, then on track 317°. Expect RADAR vectors to final approach course.

LANDING RUNWAYS 34L/R: From HAGGR on track 274° to cross BSTON between 13000 and 14000 and at 230K, then on track 273° to cross BOSSS at 12000 and at 210K. Expect ILS or LOC RWY 34L/R approach.

LANDING RUNWAYS 35L/R: From HAGGR on track 274° to cross BSTON between 13000 and 14000 and at 230K, then on track 273° to cross BOSSS at 12000 and at 210K. Expect ILS or LOC RWY 35L/R approach.

LOST COMMUNICATIONS: In the event of lost communications prior to runway transition assignment, when DEN is landing south, execute the ILS RWY 17R, when DEN is landing north, execute the ILS RWY 35R.

SW-1, 22 FEB 2024 to 21 MAR 2024

SW-1, 22 FEB 2024 to 21 MAR 2024

POWDR ONE ARRIVAL
(POWDR.POWDR1) 30JAN20

DENVER APP CON
120.35 379.3
APA ATIS
120.3
BJC ATIS
126.25
CFO ATIS
119.025
DEN D-ATIS ARR
125.6 379.9
KBKF ATIS*
119.675 259.3

GILL
114.2 GLL
Chan 89

NORTHERN
COLORADO
RGNL

GREELEY-WELD
COUNTY

MILE HIGH
114.7 DVV
Chan 94

ROCKY
MOUNTAIN
METRO

DENVER
117.9 DEN
Chan 126

COLORADO AIR AND
SPACE PORT

BUCKLEY
SPACE FORCE
BASE

FALCON
116.3 FQF
Chan 110

CENTENNIAL

POWDR
VERTICAL NAVIGATION
PLANNING INFORMATION

TURBOJETS: Expect FL190 250K
or as assigned by ATC.

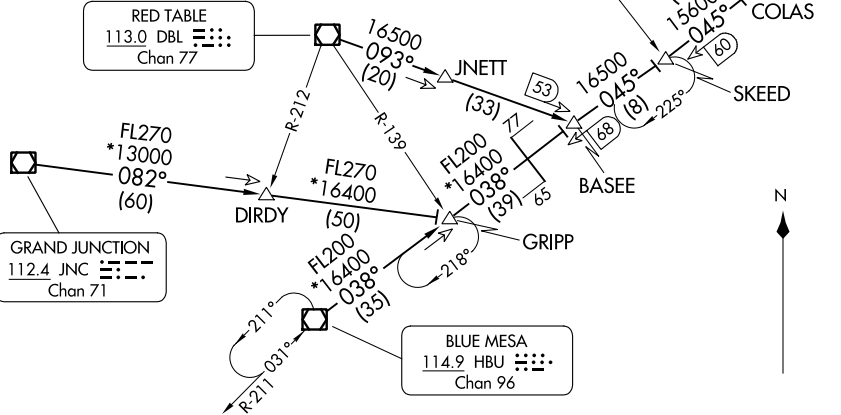
KREMMLING
113.8 RLG
Chan 85

RED TABLE
113.0 DBL
Chan 77

GRAND JUNCTION
112.4 JNC
Chan 71

BLUE MESA
114.9 HBU
Chan 96

DENVER, COLORADO



NOTE: DME required.
NOTE: Adjacent STAR is LARKS ARRIVAL.
NOTE: Chart not to scale.

(CONTINUED ON FOLLOWING PAGE)

(POWDR.POWDR1) 23334
POWDR ONE ARRIVAL

AL-9077 (FAA)

DENVER, COLORADO

ARRIVAL ROUTE DESCRIPTION

BLUE MESA TRANSITION (HBU.POWDR1): From over HBU VOR/DME on HBU R-038 to GRIPP then on HBU R-038 and DVV R-225 to BASEE then on DVV R-225 to POWDR. Thence. . . .

GRAND JUNCTION TRANSITION (JNC.POWDR1): From over JNC VOR/DME on JNC R-082 to GRIPP; then on HBU R-038 and DVV R-225 to BASEE then on DVV R-225 to POWDR. Thence. . . .

RED TABLE TRANSITION (DBL.POWDR1): From over DBL VOR/DME on DBL R-093 and DVV R-225 to POWDR. Thence. . . .

. . . .from over POWDR on the DVV VORTAC R-225 to HLLIE, then on DVV VORTAC R-225 to SLOPE, then on DVV VORTAC R-225 to DVV. Expect RADAR vectors to the final approach course at or before DVV VORTAC.

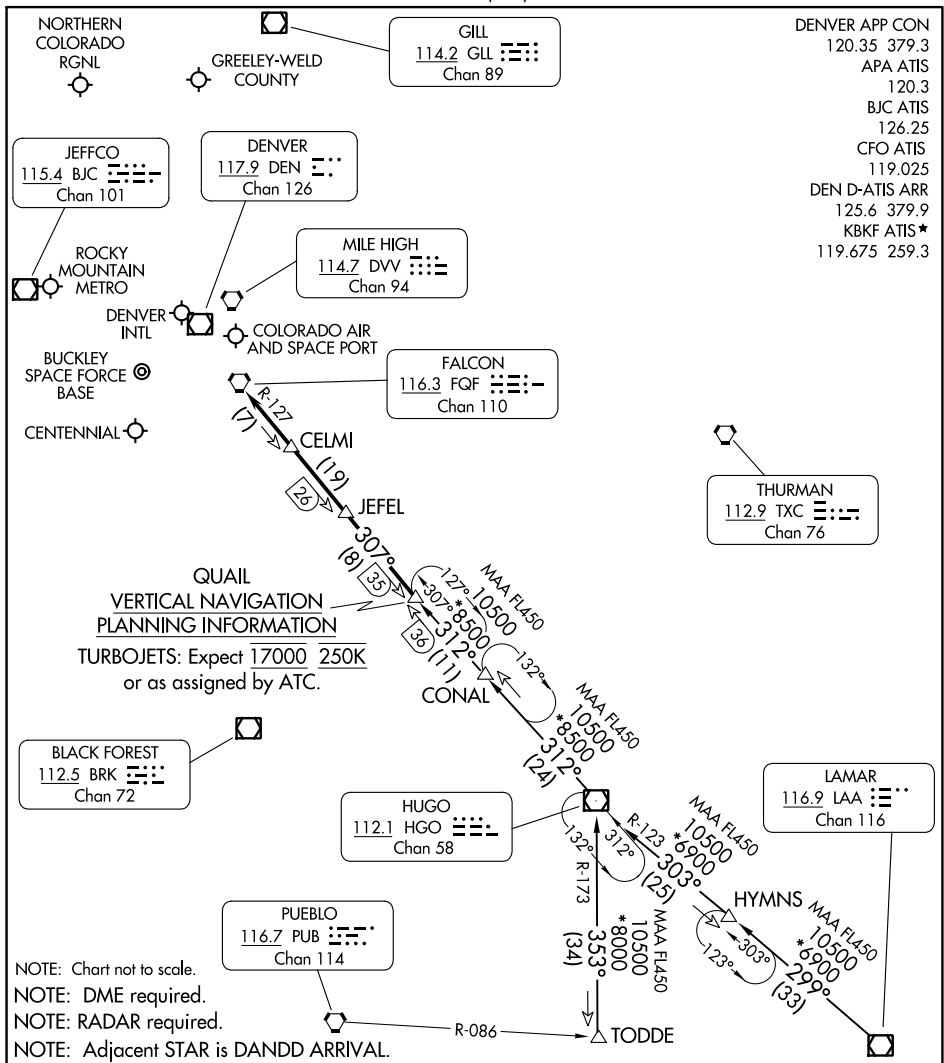
SW-1, 22 FEB 2024 to 21 MAR 2024

SW-1, 22 FEB 2024 to 21 MAR 2024

QUAIL ONE ARRIVAL

AL-9077 (FAA)

DENVER, COLORADO



SW-1, 22 FEB 2024 to 21 MAR 2024

SW-1, 22 FEB 2024 to 21 MAR 2024

- DENVER APP CON 120.35 379.3
- APA ATIS 120.3
- BJC ATIS 126.25
- CFO ATIS 119.025
- DEN D-ATIS ARR 125.6 379.9
- KBKF ATIS* 119.675 259.3

QUAIL VERTICAL NAVIGATION PLANNING INFORMATION
 TURBOJET: Expect 17000 250K or as assigned by ATC.

- NOTE: Chart not to scale.
- NOTE: DME required.
- NOTE: RADAR required.
- NOTE: Adjacent STAR is DANDD ARRIVAL.

ARRIVAL ROUTE DESCRIPTION

HUGO TRANSITION (HGO.QUAIL1): From over HGO VOR/DME on HGO R-312 to QUAIL. Thence. . .

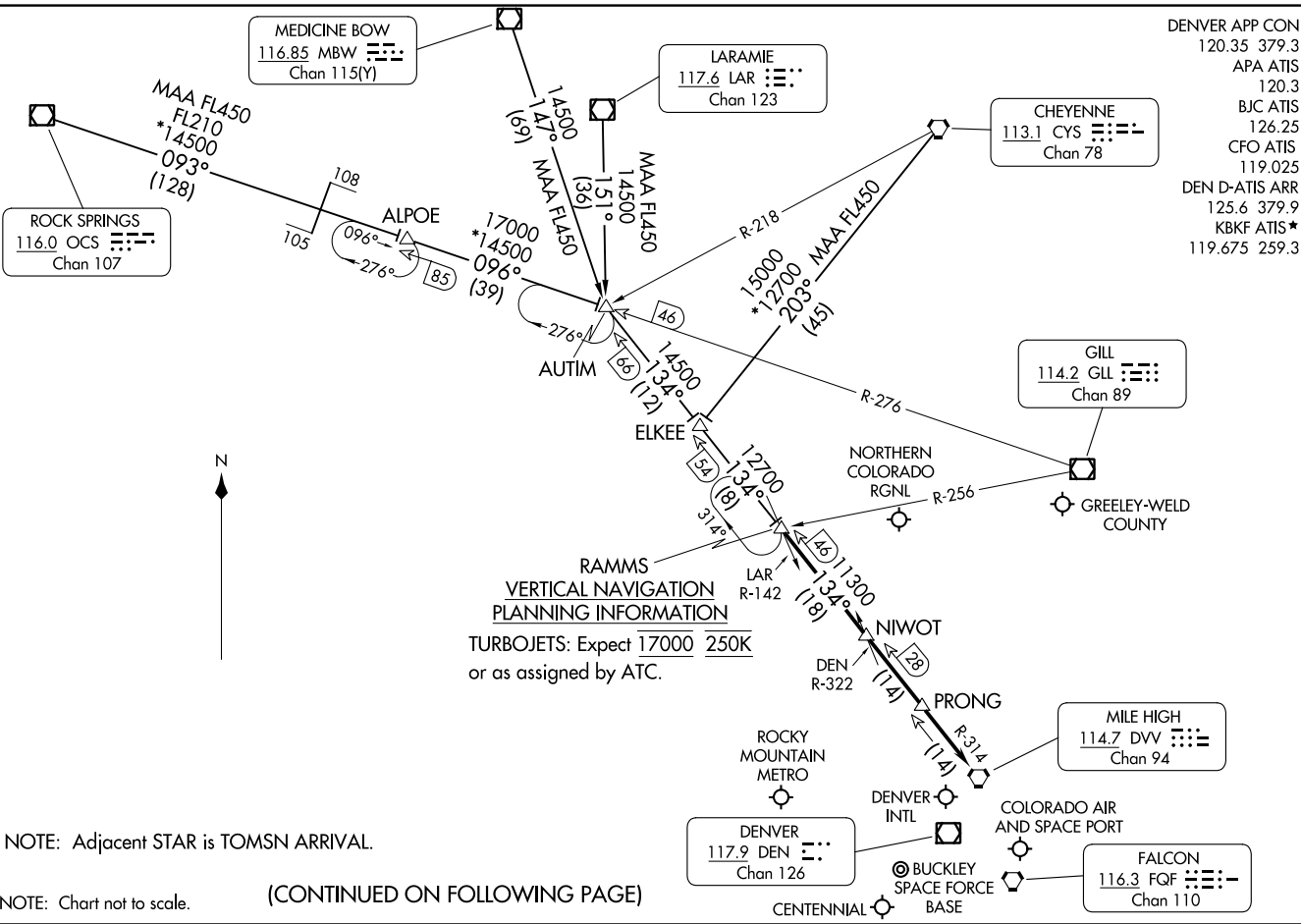
LAMAR TRANSITION (LAA.QUAIL1): From over LAA VOR/DME on LAA R-299 and HGO R-123 to HGO VOR/DME, then on HGO R-312 to QUAIL. Thence. . .

TODDE TRANSITION (TODDE.QUAIL1): From over TODDE on HGO R-173 to HGO VOR/DME, then on HGO R-312 to QUAIL. Thence. . .

. . . from over QUAIL on HGO R-312 and FQF R-127 to FQF VORTAC. Expect RADAR vectors to the final approach course at or before FQF VORTAC.

QUAIL ONE ARRIVAL

DENVER, COLORADO



(CONTINUED ON FOLLOWING PAGE)

ARRIVAL ROUTE DESCRIPTION

CHEYENNE TRANSITION (CYS.RAMMS8): From over CYS VORTAC on CYS R-203 and DVV R-314 to RAMMS. Thence. . . .

LARAMIE TRANSITION (LAR.RAMMS8): From over LAR VOR/DME on LAR R-151 and DVV R-314 to RAMMS. Thence. . . .

MEDICINE BOW TRANSITION (MBW.RAMMS8): From over MBW VOR/DME on MBW R-147 and DVV R-314 to RAMMS. Thence. . . .

ROCK SPRINGS TRANSITION (OCS.RAMMS8): From over OCS VOR/DME on OCS R-093 and GLL R-276 to ALPOE then on GLL R-276 and DVV R-314 to RAMMS. Thence. . . .

. . . .from over RAMMS on DVV R-314 to DVV VORTAC. Expect RADAR vectors to the final approach course at or before DVV VORTAC.

SW-1, 22 FEB 2024 to 21 MAR 2024

SW-1, 22 FEB 2024 to 21 MAR 2024

DENVER APP CON
120.35 379.3
D-ATIS ARR
125.6 379.9
DENVER TOWER
128.75 273.55 (Rwy 7-25)
132.35 239.275 (Rwys 8-26, 17L-35R)
124.3 322.45 (Rwy 17R-35L)
135.3 351.95 (Rwys 16L-34R, 16R-34L)

RNAV 1 - DME/DME/IRU or GPS
RADAR required for non-GPS equipped aircraft

See following page
for arrival routes

SSKII
FL220
FL200

12 NM

JNETT
FL260
MAA FL260

MAA FL260
FL200
103°
(17)

HAMIC

(22)
FL200
070°

FL200
057°
(25)

KTOOO

FL200
069°
(92)

ABASN
FL270

FL200
057°
(22)

FL200
043°
(50)

12 NM

HAQHY
FL260
MAA FL260

BOWLL

FL200
056°
(48)

WUNZE
FL260
MAA FL260

058°
238°
12 NM

SNOOE
FL270
056°
(27)

12 NM

NOTE: Landing north select Rwy 34R transition.
NOTE: Landing south select Rwy 16R transition.
NOTE: Landing east select Rwy 7 transition.
NOTE: Landing west select Rwy 26 transition.

NOTE: Turbojet aircraft only.
NOTE: Turbojet aircraft descend via MACH number until intercepting 280K. Maintain 280K until slowed by STAR.
NOTE: Denver Center will issue "descend via" clearance and landing direction.
NOTE: Expect runway assignment on initial contact with Denver TRACON.
NOTE: BOWLL enroute transition: do not file-to be assigned by ATC.

- BOWLL TRANSITION (BOWLL.SSKII3)
- BUMMP TRANSITION (BUMMP.SSKII3)
- HAQHY TRANSITION (HAQHY.SSKII3)
- JNETT TRANSITION (JNETT.SSKII3)
- WUNZE TRANSITION (WUNZE.SSKII3)

CRUDD
037°
217°
12 NM

(CONTINUED ON FOLLOWING PAGE)

NOTE: Chart not to scale.

SSKII THREE ARRIVAL (RNAV) Transition Routes
(SSKII.SSKII3) 07OCT21
DENVER, COLORADO
DENVER INTL (DEN)

(SSKII.SSKII3) 23110
SSKII THREE ARRIVAL (RNAV) Transition Routes
AL-9077 (FAA)
DENVER INTL (DEN)
DENVER, COLORADO

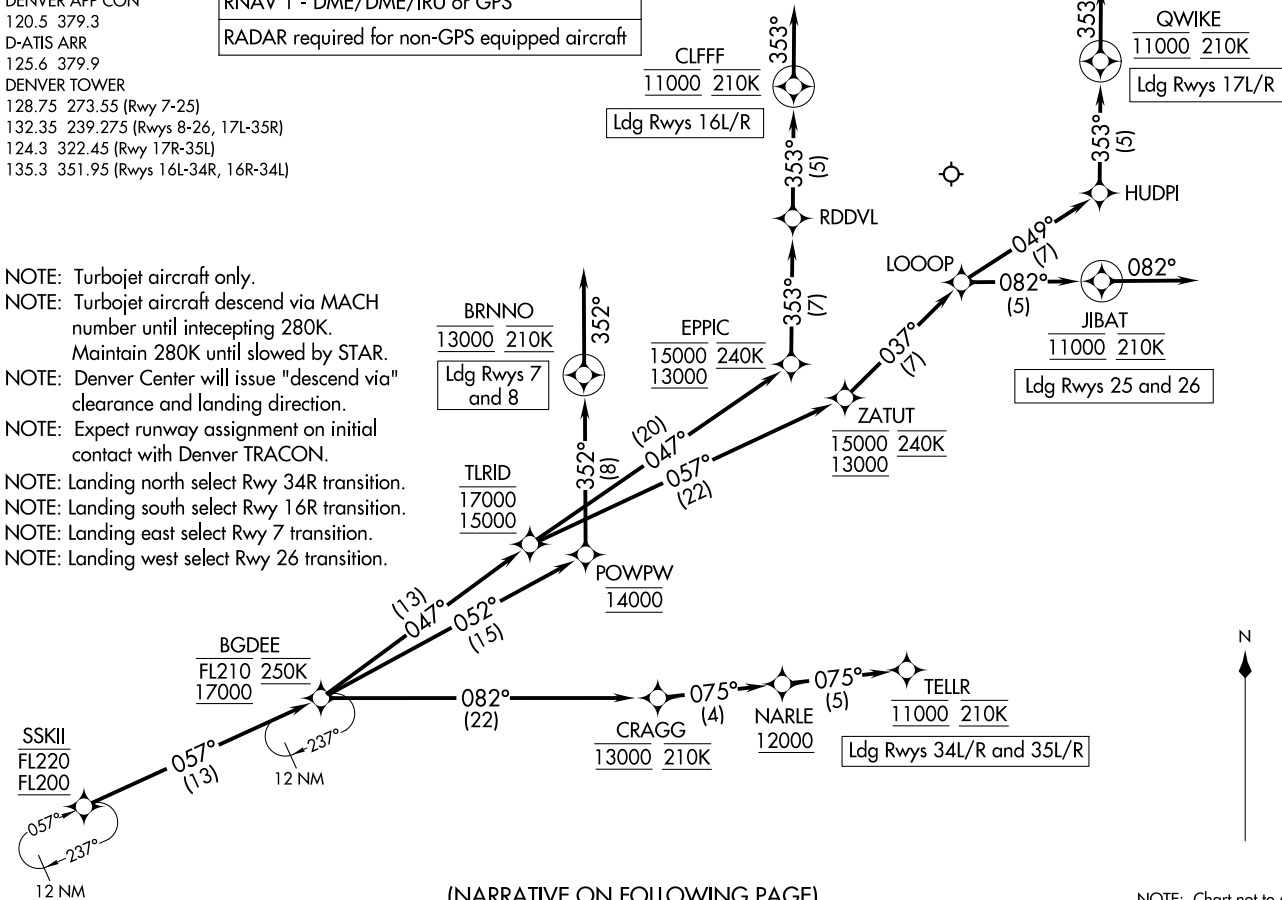
SSKII THREE ARRIVAL (RNAV) Arrival Routes
(SSKII, SSKII3) 07OCT21

DENVER, COLORADO
DENVER INTL (DEN)

DENVER APP CON
120.5 379.3
D-ATIS ARR
125.6 379.9
DENVER TOWER
128.75 273.55 (Rwy 7-25)
132.35 239.275 (Rwys 8-26, 17L-35R)
124.3 322.45 (Rwy 17R-35L)
135.3 351.95 (Rwys 16L-34R, 16R-34L)

RNAV 1 - DME/DME/IRU or GPS
RADAR required for non-GPS equipped aircraft

- NOTE: Turbojet aircraft only.
- NOTE: Turbojet aircraft descend via MACH number until intercepting 280K. Maintain 280K until slowed by STAR.
- NOTE: Denver Center will issue "descend via" clearance and landing direction.
- NOTE: Expect runway assignment on initial contact with Denver TRACON.
- NOTE: Landing north select Rwy 34R transition.
- NOTE: Landing south select Rwy 16R transition.
- NOTE: Landing east select Rwy 7 transition.
- NOTE: Landing west select Rwy 26 transition.



(NARRATIVE ON FOLLOWING PAGE)

NOTE: Chart not to scale.

(SSKII, SSKII3) 23110
SSKII THREE ARRIVAL (RNAV) Arrival Routes
AL-9077 (FAA)

DENVER INTL (DEN)
DENVER, COLORADO

ARRIVAL ROUTE DESCRIPTION

From SSKII on track 057° to cross BGDEE between 17000 and FL210 and at 250K.

LANDING RUNWAYS 7, 8: From BGDEE on track 052° to cross POWPW at 14000, then on track 352° to cross BRNNO at 13000 and at 210K, then on track 352°. Expect RADAR vectors to final approach course.

LANDING RUNWAYS 16L/R: From BGDEE on track 047° to cross TLRID between 15000 and 17000, then on track 047° to cross EPPIC between 13000 and 15000 and at 240K, then on track 353° to RDDVL, then on track 353° to cross CLFFF at 11000 and at 210K, then on track 353°. Expect RADAR vectors to final approach course.

LANDING RUNWAYS 17L/R: From BGDEE on track 047° to cross TLRID between 15000 and 17000, then on track 057° to cross ZATUT between 13000 and 15000 and at 240K, then on track 037° to LOOOP, then on track 049° to HUDPI, then on track 353° to cross QWIKI at 11000 and at 210K, then on track 353°. Expect RADAR vectors to final approach course.

LANDING RUNWAYS 25, 26: From BGDEE on track 047° to cross TLRID between 15000 and 17000, then on track 057° to cross ZATUT between 13000 and 15000 and at 240K, then on track 037° to LOOOP, then on track 082° to cross JIBAT at 11000 and at 210K, then on track 082°. Expect RADAR vectors to final approach course.

LANDING RUNWAYS 34L/R, 35L/R: From BGDEE on track 082° to cross CRAGG at 13000 and at 210K, then on track 075° to cross NARLE at or above 12000, then on track 075° to cross TELLR at 11000 and at 210K. Expect ILS or LOC RWY 34L/R or ILS or LOC RWY 35L/R approach.

LOST COMMUNICATIONS: In the event of lost communications prior to runway transition assignment, when DEN is landing south, execute the ILS RWY 16R, when DEN is landing north, execute the ILS RWY 34R.

SW-1, 22 FEB 2024 to 21 MAR 2024

SW-1, 22 FEB 2024 to 21 MAR 2024

TBARR THREE ARRIVAL (RNAV) Transition Routes

DENVER APP CON

120.35 379.3

D-ATIS ARR

125.6 379.9

DENVER TOWER

128.75 273.55 (Rwy 7-25)

132.35 239.275 (Rwys 8-26, 17L-35R)

124.3 322.45 (Rwy 17R-35L)

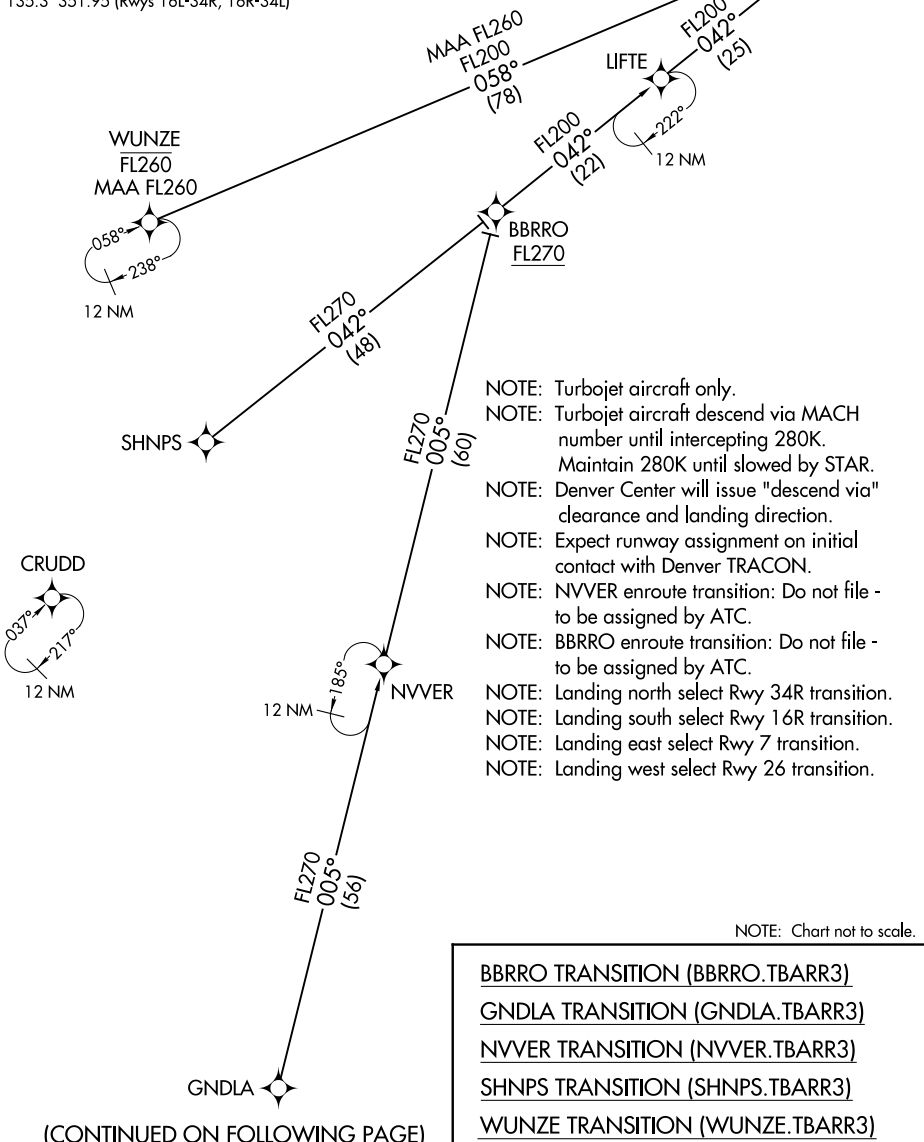
135.3 351.95 (Rwys 16L-34R, 16R-34L)

RNAV 1-DME/DME/IRU or GPS

RADAR required for non-GPS equipped aircraft

See following page
for arrival routes.

TBARR
FL220
FL200



- NOTE: Turbojet aircraft only.
- NOTE: Turbojet aircraft descend via MACH number until intercepting 280K. Maintain 280K until slowed by STAR.
- NOTE: Denver Center will issue "descend via" clearance and landing direction.
- NOTE: Expect runway assignment on initial contact with Denver TRACON.
- NOTE: NVVER enroute transition: Do not file - to be assigned by ATC.
- NOTE: BBRRO enroute transition: Do not file - to be assigned by ATC.
- NOTE: Landing north select Rwy 34R transition.
- NOTE: Landing south select Rwy 16R transition.
- NOTE: Landing east select Rwy 7 transition.
- NOTE: Landing west select Rwy 26 transition.

NOTE: Chart not to scale.

- BBRRO TRANSITION (BBRRO.TBARR3)
- GNDLA TRANSITION (GNDLA.TBARR3)
- NVVER TRANSITION (NVVER.TBARR3)
- SHNPS TRANSITION (SHNPS.TBARR3)
- WUNZE TRANSITION (WUNZE.TBARR3)

(CONTINUED ON FOLLOWING PAGE)

SW-1, 22 FEB 2024 to 21 MAR 2024

SW-1, 22 FEB 2024 to 21 MAR 2024

(TBARR.TBARR3) 23110

AL-9077 (FAA)

DENVER INTL (DEN)
DENVER, COLORADO

TBARR THREE ARRIVAL (RNAV) Arrival Routes

DENVER APP CON

120.35 379.3

D-ATIS ARR

125.6 379.9

DENVER TOWER

128.75 273.55 (Rwy 7-25)

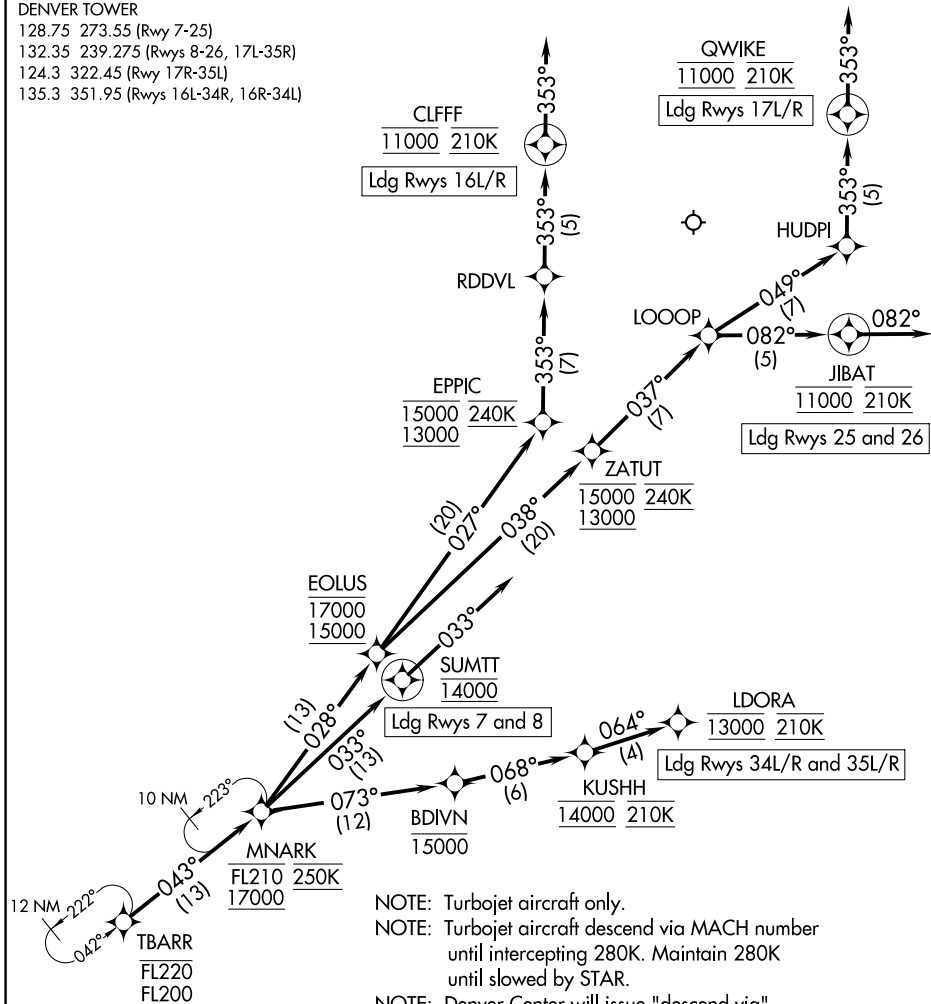
132.35 239.275 (Rwys 8-26, 17L-35R)

124.3 322.45 (Rwy 17R-35L)

135.3 351.95 (Rwys 16L-34R, 16R-34L)

RNAV 1-DME/DME/IRU or GPS

RADAR required for non-GPS equipped aircraft



SW-1, 22 FEB 2024 to 21 MAR 2024

SW-1, 22 FEB 2024 to 21 MAR 2024

- NOTE: Turbojet aircraft only.
- NOTE: Turbojet aircraft descend via MACH number until intercepting 280K. Maintain 280K until slowed by STAR.
- NOTE: Denver Center will issue "descend via" clearance and landing direction.
- NOTE: Expect runway assignment on initial contact with Denver TRACON.
- NOTE: Landing north select Rwy 34R transition.
- NOTE: Landing south select Rwy 16R transition.
- NOTE: Landing east select Rwy 7 transition.
- NOTE: Landing west select Rwy 26 transition.

(NARRATIVE ON FOLLOWING PAGE)

NOTE: Chart not to scale.

TBARR THREE ARRIVAL (RNAV) Arrival Routes

(TBARR.TBARR3) 07OCT21

DENVER, COLORADO
DENVER INTL (DEN)

ARRIVAL ROUTE DESCRIPTION

From TBARR on track 043° to cross MNARK between 17000 and FL210 and at 250K.

LANDING RUNWAYS 7, 8: From MNARK on track 033° to cross SUMTT at 14000, then on track 033°. Expect RADAR vectors to final approach course.

LANDING RUNWAYS 16L/R: From MNARK on track 028° to cross EOLUS between 15000 and 17000, then on track 027° to cross EPPIC between 13000 and 15000 and at 240K, then on track 353° to RDDVL, then on track 353° to cross CLFFF at 11000 and at 210K, then on track 353°. Expect RADAR vectors to final approach course.

LANDING RUNWAYS 17L/R: From MNARK on track 028° to cross EOLUS between 15000 and 17000, then on track 038° to cross ZATUT between 13000 and 15000 and at 240K, then on track 037° to LOOOP, then on track 049° to HUDPI, then on track 353° to cross QWIKI at 11000 and at 210K, then on track 353°. Expect RADAR vectors to final approach course.

LANDING RUNWAYS 25, 26: From MNARK on track 028° to cross EOLUS between 15000 and 17000, then on track 038° to cross ZATUT between 13000 and 15000 and at 240K, then on track 037° to LOOOP, then on track 082° to cross JIBAT at 11000 and at 210K, then on track 082°. Expect RADAR vectors to final approach course.

LANDING RUNWAYS 34L/R: From MNARK on track 073° to cross BDIVN at or below 15000, then on track 068° to cross KUSHH at 14000 and at 210K, then on track 064° to cross LDORA at 13000 and at 210K. Expect ILS or LOC RWY 34L/R approach.

LANDING RUNWAYS 35L/R: From MNARK on track 073° to cross BDIVN at or below 15000, then on track 068° to cross KUSHH at 14000 and at 210K, then on track 064° to cross LDORA at 13000 and at 210K. Expect ILS or LOC RWY 35L/R approach.

LOST COMMUNICATIONS: In the event of lost communications prior to runway transition assignment, when DEN is landing south, execute the ILS RWY 16R, when DEN is landing north, execute the ILS RWY 35L.

SW-1, 22 FEB 2024 to 21 MAR 2024

SW-1, 22 FEB 2024 to 21 MAR 2024

TOMSN EIGHT ARRIVAL
(TOMSN, TOMSN8) 30JAN20

(TOMSN, TOMSN8) 23334
TOMSN EIGHT ARRIVAL

AL-9077 (FAA)

DENVER, COLORADO

DENVER APP CON
119.3 307.3
APA ATIS
120.3
BJC ATIS
126.25
CFO ATIS
119.025
DEN D-ATIS ARR
125.6 379.9
KBKF ATIS*
119.675 259.3

HAYDEN
115.6 CHE
Chan 103

LARAMIE
117.6 LAR
Chan 123

CHEYENNE
113.1 CYS
Chan 78

GILL
114.2 GLL
Chan 89

MILE HIGH
114.7 DVV
Chan 94

DENVER
117.9 DEN
Chan 126

FALCON
116.3 FGF
Chan 110

MEEKER
115.2 EKR
Chan 99

KREMMLING
113.8 RLG
Chan 85

JEFFCO
115.4 BJC
Chan 101

GOULL
DME required for GOULL
holding pattern.

**TOMSN
VERTICAL NAVIGATION
PLANNING INFORMATION**

Turbojets landing DEN:
Expect FL190 250K
or as assigned by ATC.

Turbojets landing APA/BJC:
Expect 17000 250K
or as assigned by ATC.

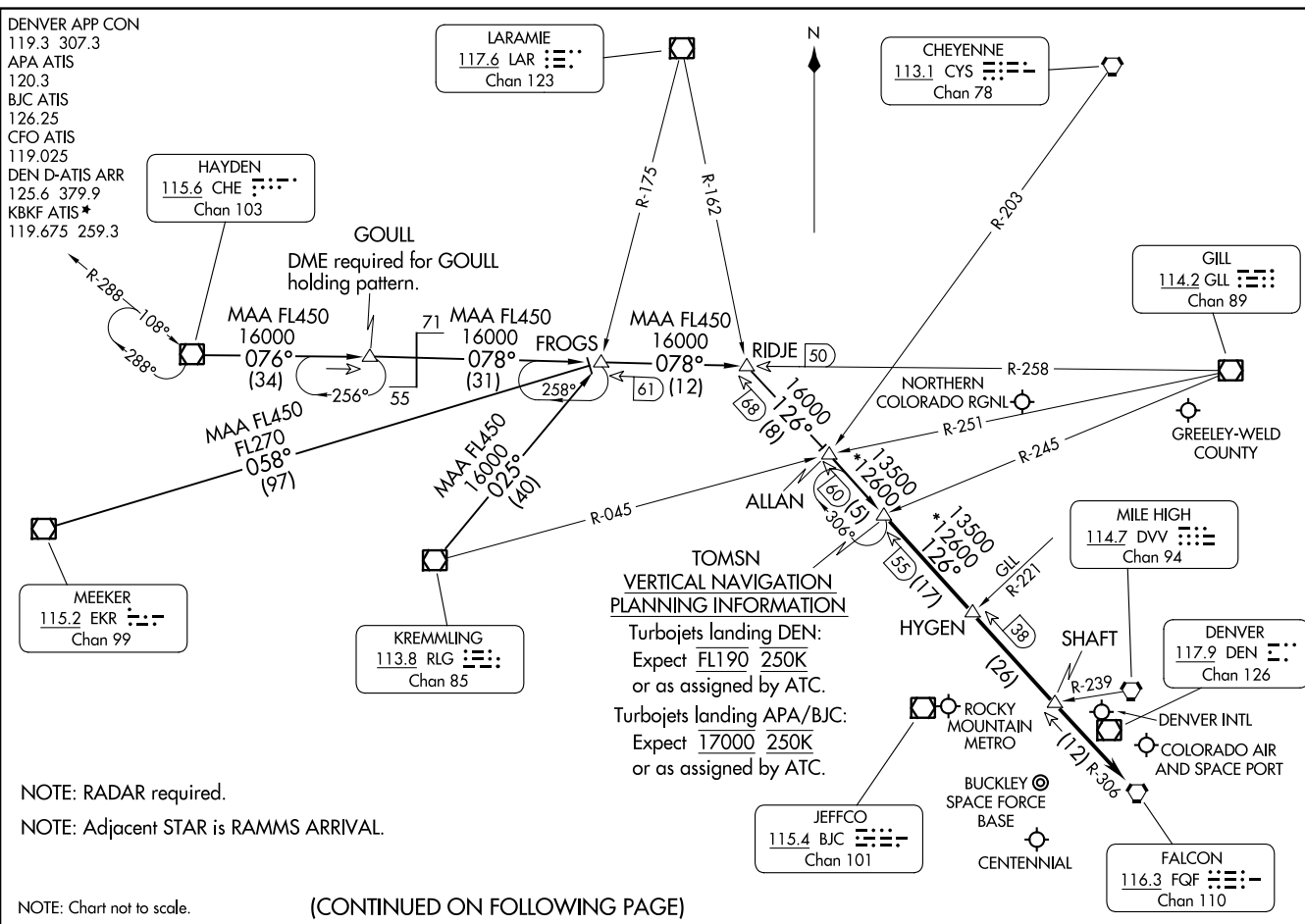
NOTE: RADAR required.

NOTE: Adjacent STAR is RAMMS ARRIVAL.

NOTE: Chart not to scale.

(CONTINUED ON FOLLOWING PAGE)

DENVER, COLORADO



ARRIVAL ROUTE DESCRIPTION

HAYDEN TRANSITION (CHE.TOMSN8): From over CHE VOR/DME on CHE R-076 and GLL R-258 to RIDJE, then on FQF R-306 to TOMSN. Thence. . . .

KREMLING TRANSITION (RLG.TOMSN8): From over RLG VOR/DME on RLG R-025 and GLL R-258 to RIDJE, then on FQF R-306 to TOMSN. Thence. . . .

MEEKER TRANSITION (EKR.TOMSN8): From over EKR VOR/DME on EKR R-058 and GLL R-258 to RIDJE, then on FQF R-306 to TOMSN. Thence. . . .

. . . .from over TOMSN on FQF R-306 to FQF VORTAC. Expect RADAR vectors to the final approach course at or before FQF VORTAC.

SW-1, 22 FEB 2024 to 21 MAR 2024

SW-1, 22 FEB 2024 to 21 MAR 2024