

LOC I-DET 111.3	APP CRS 148°	Rwy Idg 5092
		TDZE 623
		Apt Elev 626

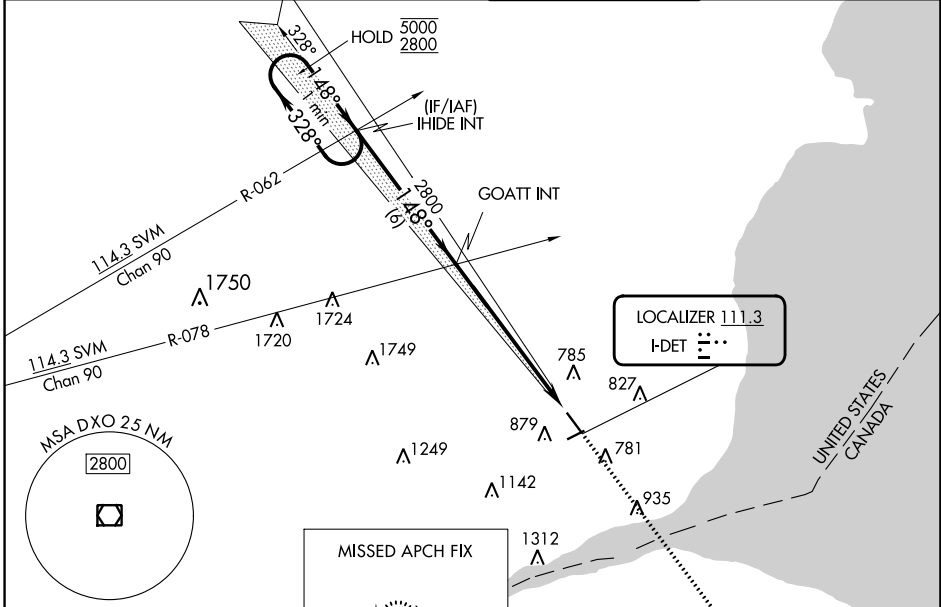
ILS or LOC RWY 15

COLEMAN A YOUNG MUNI (DET)

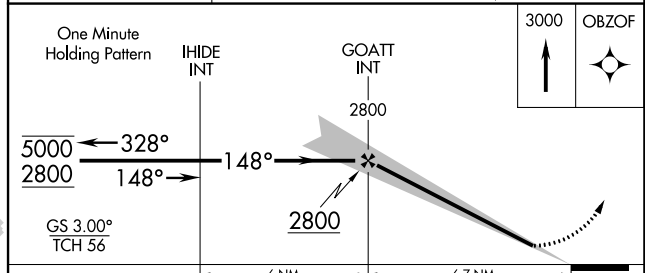
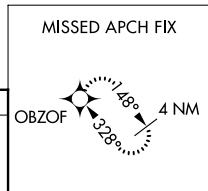
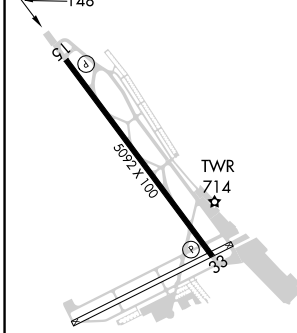
RNP APCH - GPS.
 RADAR required for procedure entry.
 ⚠ Circling to Rwy 7, 25 NA at night.
 ⚠ Rwy 15 helicopter visibility reduction below 3/4 SM NA.

MISSED APPROACH: Climb to 3000
 direct OBZOF and hold.

ATIS 124.875	DETROIT APP CON 134.3 284.0	DETROIT CITY TOWER 121.3 257.8	GND CON 121.85
------------------------	---------------------------------------	--	--------------------------



ELEV 626	TDZE 623
← 148°	



MIRL Rwy 7-25
 HIRL Rwy 15-33
 REIL Rwy 15 and 33

FAF to MAP 6.7 NM

Knots	60	90	120	150	180
Min:Sec	6:42	4:28	3:21	2:41	2:14

CIRCLING

CATEGORY	A	B	C	D
S-ILS 15	910-7/8 287 (300-7/8)			
S-LOC 15	1160-1	537 (600-1)	1160-1 1/2	537 (600-1 1/2)
<input checked="" type="checkbox"/> CIRCLING	1180-1	554 (600-1)	1320-2	1500-2 3/4 874 (900-2 3/4)

LOC I-VQM 111.3	APP CRS 328°	Rwy ldg TDZE 626	5092
		Apt Elev 626	

ILS or LOC RWY 33

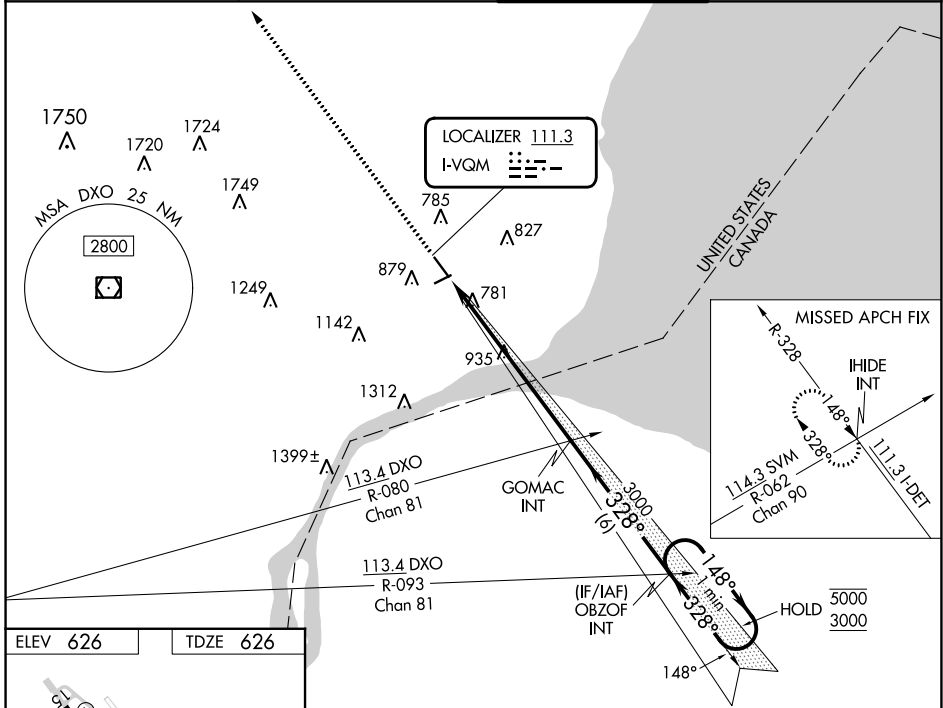
COLEMAN A YOUNG MUNI (D/E/T)

RNAV 1-GPS and RADAR required

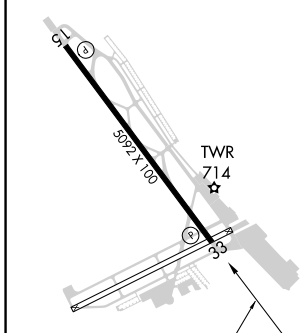
⚠ Circling Rwy 7, 25 NA at night.
Rwy 33 helicopter visibility reduction below 3/4 SM NA.

MISSED APPROACH: Climb to 3000 direct I/Hide and hold.

ATIS 124.875	DETROIT APP CON 134.3 284.0	DETROIT TOWER 121.3 257.8	GND CON 121.85
------------------------	---------------------------------------	-------------------------------------	--------------------------



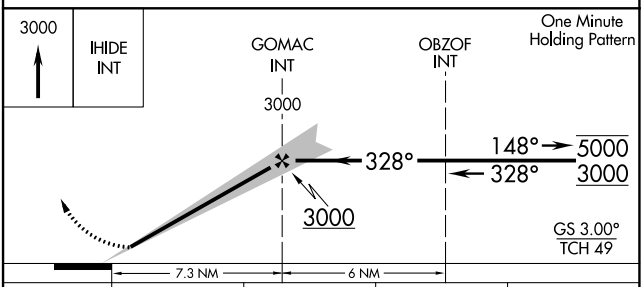
ELEV 626	TDZE 626
----------	----------



MIRL Rwy 7-25
HIRL Rwy 15-33
REIL Rwys 15 and 33

FAF to MAP 7.3 NM

Knots	60	90	120	150	180
Min:Sec	7:18	4:52	3:39	2:55	2:26



CATEGORY	A	B	C	D
S-ILS 33	876-3/4 250 (300-3/4)			
S-LOC 33	1300-1	674 (700-1)	1300-1 7/8	674 (700-1 7/8)
<input checked="" type="checkbox"/> CIRCLING	1300-1	674 (700-1)	1320-2	1500-2 3/4 874 (900-2 3/4)

EC-1, 22 FEB 2024 to 21 MAR 2024

EC-1, 22 FEB 2024 to 21 MAR 2024

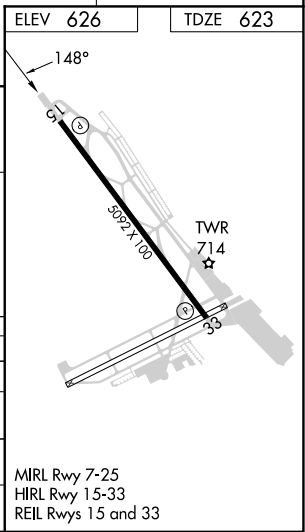
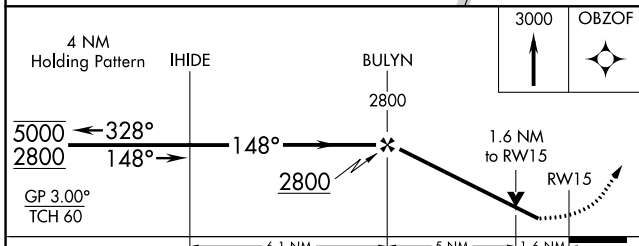
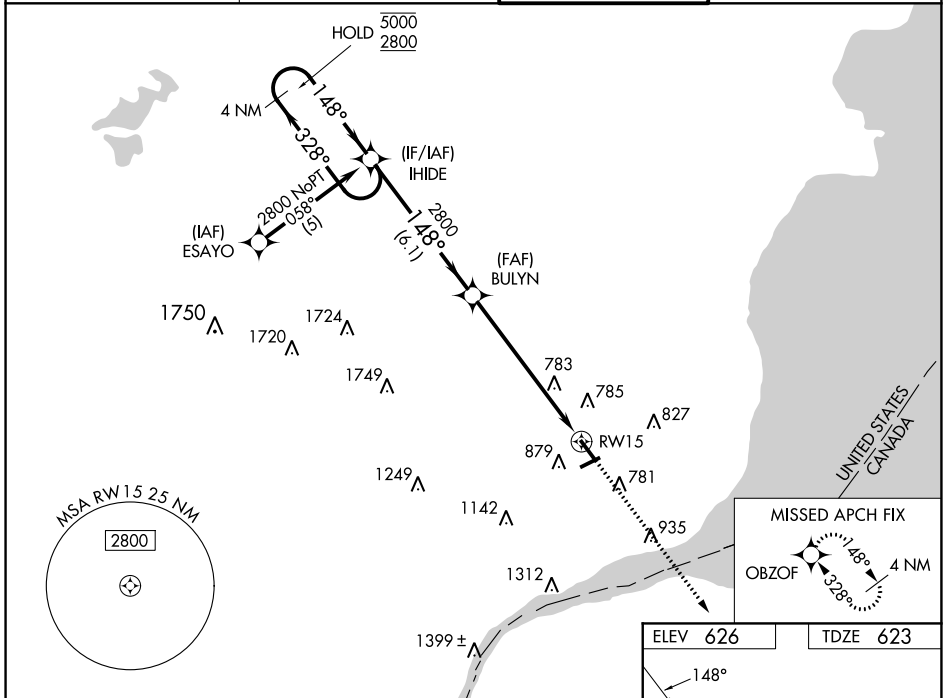
WAAS CH 63211 W15A	APP CRS 148°	Rwy Idg TDZE Apt Elev	5092 623 626
--	------------------------	-----------------------------	---

RNAV (GPS) RWY 15

COLEMAN A YOUNG MUNI (DET)

RNP APCH - GPS.	<p>⚠ Circling to Rwy 7, 25 NA at night. Rwy 15 helicopter visibility reduction below $\frac{3}{4}$ SM NA. For uncompensated Baro-VNAV systems, LNAV/VNAV NA below -16°C or above 54°C.</p>	MISSED APPROACH: Climb to 3000 direct OBZOF and hold.
-----------------	--	---

ATIS 124.875	DETROIT APP CON 134.3 284.0	DETROIT CITY TOWER 121.3 257.8	GND CON 121.85
------------------------	---------------------------------------	--	--------------------------



CATEGORY	A	B	C	D
LPV DA		926- $\frac{7}{8}$	303 (300- $\frac{7}{8}$)	
LNAV/VNAV DA		1078-1 $\frac{3}{8}$	455 (500-1 $\frac{3}{8}$)	
LNAV MDA	1180-1	557 (600-1)	1180-1 $\frac{5}{8}$	557 (600-1 $\frac{5}{8}$)
C CIRCLING	1180-1	554 (600-1)	1320-2 694 (700-2)	1500-2 $\frac{3}{4}$ 874 (900-2 $\frac{3}{4}$)

EC-1, 22 FEB 2024 to 21 MAR 2024

EC-1, 22 FEB 2024 to 21 MAR 2024

WAAS CH 58211 W33A	APP CRS 328°	Rwy Idg TDZE Apt Elev	5092 626 626
--	------------------------	-----------------------------	---

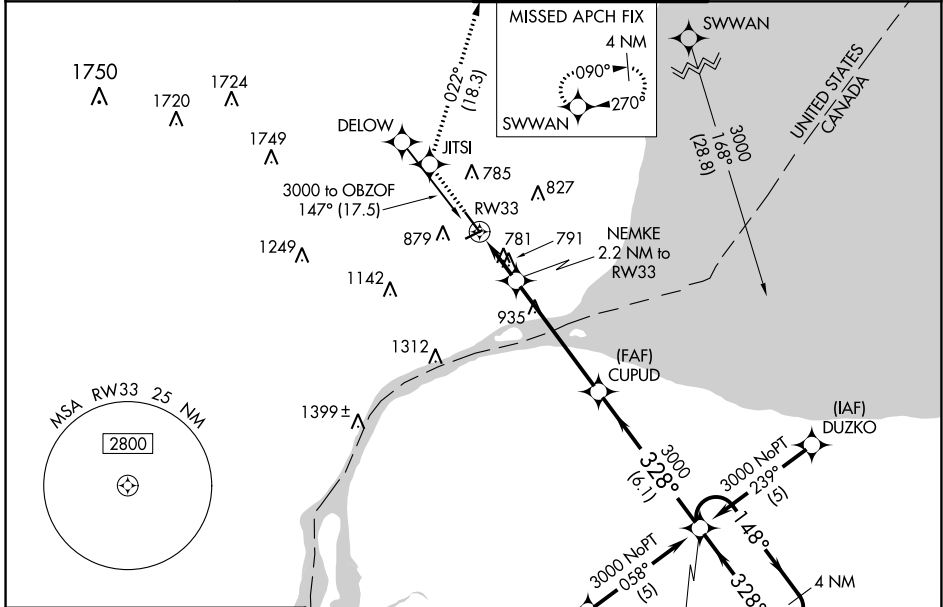
RNAV (GPS) RWY 33

COLEMAN A YOUNG MUNI (D/E/T)

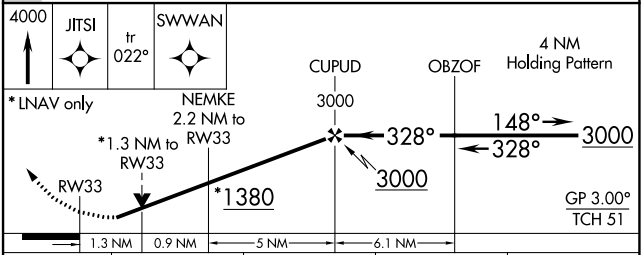
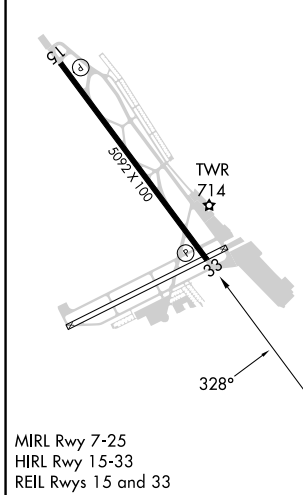
⚠ Circling to Rwy 7, 25 NA at night. For uncompensated Baro-VNAV systems, LNAV/VNAV NA below -16°C (4°F) or above 48°C (118°F). Rwy 33 helicopter visibility reduction below ¾ SM NA. DME/DME RNP-0.3 NA.

⚠ MISSED APPROACH: Climb to 4000 direct JITS1 and on track 022° to SWWAN and hold.

ATIS 124.875	DETROIT APP CON 134.3 284.0	DETROIT CITY TOWER 121.3 257.8	GND CON 121.85
------------------------	---------------------------------------	--	--------------------------



ELEV 626	TDZE 626
-----------------	-----------------



CATEGORY	A	B	C	D
LPV DA	936-1 310 (400-1)			
LNAV/VNAV DA	1039-1½ 413 (500-1½)			
LNAV MDA	1100-1 474 (500-1)	1100-1¼ 474 (500-¼)		1100-1½ 474 (500-½)
C CIRCLING	1180-1 554 (600-1)	1320-2 694 (700-2)		1500-2¾ 874 (900-2¾)