

COPTER VOR RWY 36

DOTHAN RGNL (DHN)

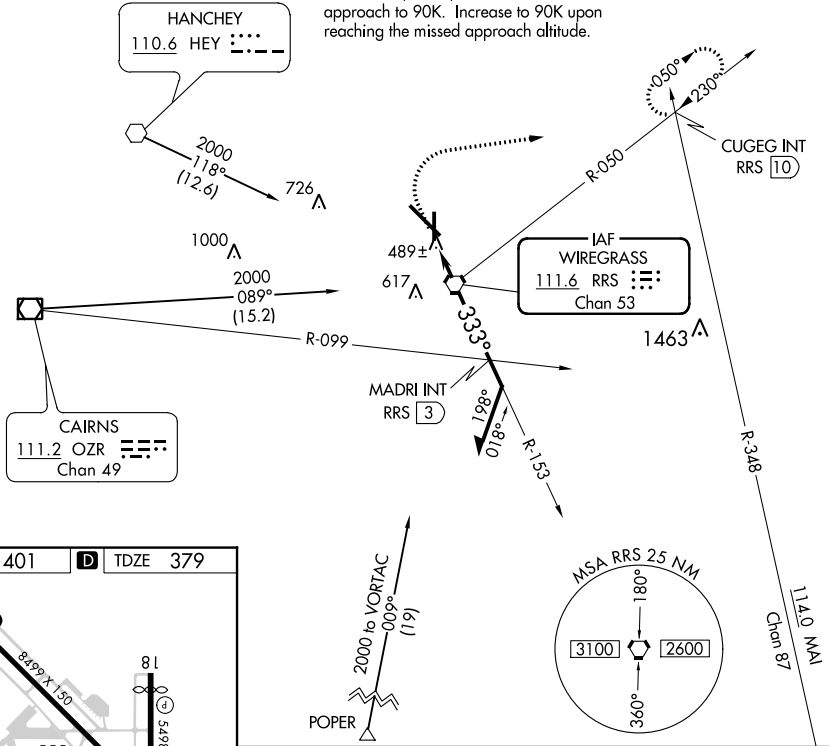
VORTAC RRS 111.6 Chan 53	APP CRS 333°	Rwy Idg TDZE Apt Elev	5000 379 401
---------------------------------------	------------------------	-----------------------------	---

▼ When local altimeter setting not received, use Cairns AAF (Fort Novosel) altimeter setting and increase all MDA 60 feet.

MISSED APPROACH: Climb to 900 then climbing right turn to 2000 on heading 080° and RRS VORTAC R-050 to CUGEG INT/RRS 10 DME and hold.

ATIS 135.725	CAIRNS APP CON ★ 125.4 327.125	DOTHAN TOWER ★ 118.4 (CTAF) 257.6	GND CON 121.7 348.6	UNICOM 122.95
------------------------	--	---	-------------------------------	-------------------------

Limit final and missed approach to 70K. Limit feeder, initial, and intermediate approach to 90K. Increase to 90K upon reaching the missed approach altitude.



SE-4, 22 FEB 2024 to 21 MAR 2024

SE-4, 22 FEB 2024 to 21 MAR 2024

ELEV 401	D	TDZE 379
----------	----------	----------

REIL Rwy 18
REIL Rwy 14
HIRL Rwy 18-36
HIRL Rwy 14-32

FAF to MAP 1.8 NM					
Knots	45	60	75	90	105
Min:Sec	2:24	1:48	1:26	1:12	1:02

900	2000	RRS R-050	CUGEG INT	RRS VORTAC	Remain within 5 NM
↑	hdg 080°				
153°		MADRI INT RRS (3)		2000	
333°		2000		1400	
5.22° HCH 40		1.8 NM		3 NM	
COPTER					
CATEGORY H-36		740-1 361 (400-1)			

LOC/DME I-ODA 110.75 Chan 44 (Y)	APP CRS 138°	Rwy Idg TDZE Apt Elev	8496 401 401
---	------------------------	-----------------------------	---

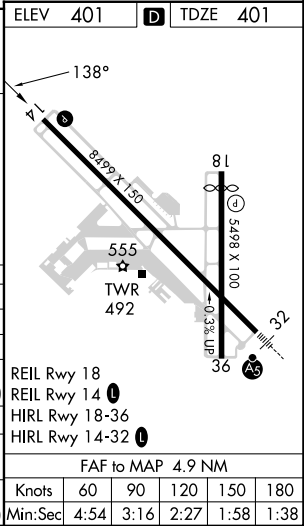
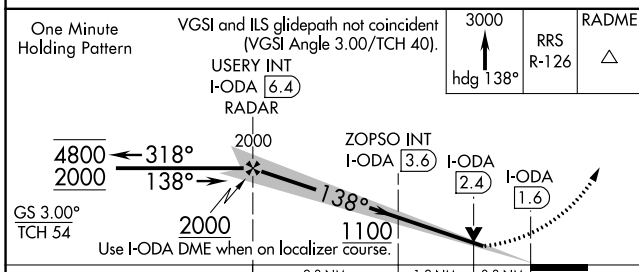
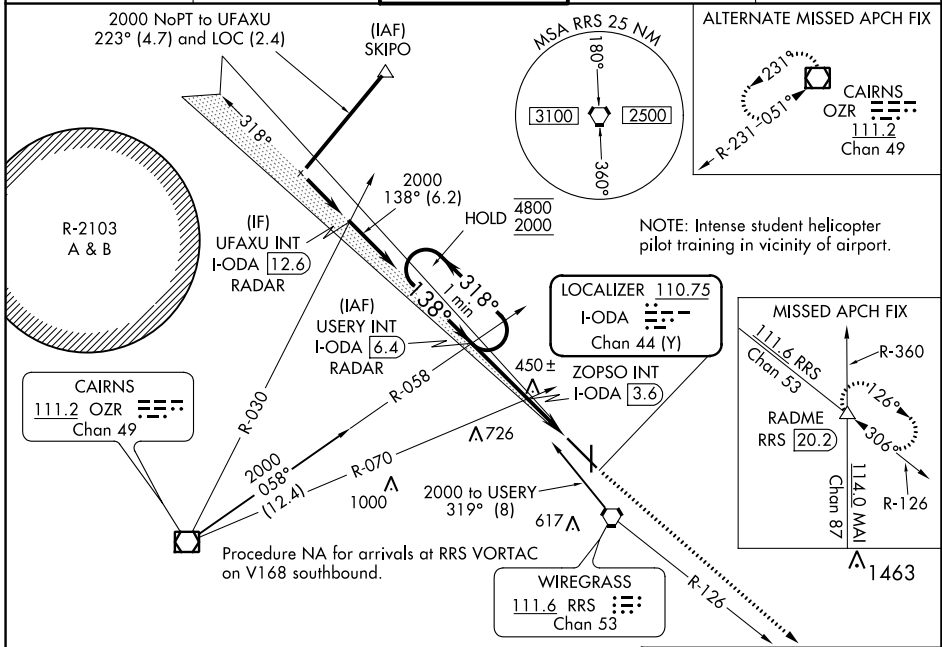
ILS or LOC RWY 14

DOTHAN RGNL (DHN)

Autopilot coupled approach NA below 590.

MISSED APPROACH: Climb to 3000 on heading 138° and on RRS VORTAC R-126 to RADME INT/RRS 20.2 DME and hold.

ATIS 135.725	CAIRNS APP CON ★ 125.4 327.125	DOTHAN TOWER ★ 118.4 (CTAF) 0 257.6	GND CON 121.7 348.6	UNICOM 122.95
------------------------	--	---	-------------------------------	-------------------------



CATEGORY	A	B	C	D	E
S-ILS 14	601-¾		200 (200-¾)		
S-LOC 14	1100-1	699 (700-1)		1100-2 699 (700-2)	
C CIRCLING	1100-1	699 (700-1)	1100-2 699 (700-2)	1100-2½ 699 (700-2½)	1100-2½ 699 (700-2½)
ZOPSO FIX MINIMUMS (DUAL VOR RECEIVERS, DME, OR RADAR REQUIRED)					
S-LOC 14	700-1		299 (300-1)		
C CIRCLING	860-1	459 (500-1)	920-1½ 519 (600-1½)	1040-2 639 (700-2)	1040-2½ 639 (700-2½)

SE-4, 22 FEB 2024 to 21 MAR 2024


SE-4, 22 FEB 2024 to 21 MAR 2024

LOC I-DHN	APP CRS	Rwy Idg	8496
108.3	318°	TDZE	382
		Apt Elev	401

ILS or LOC RWY 32

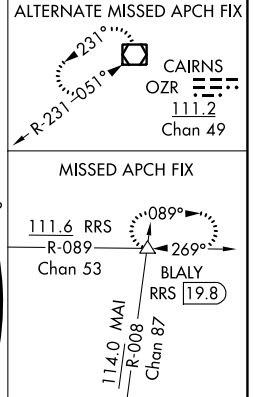
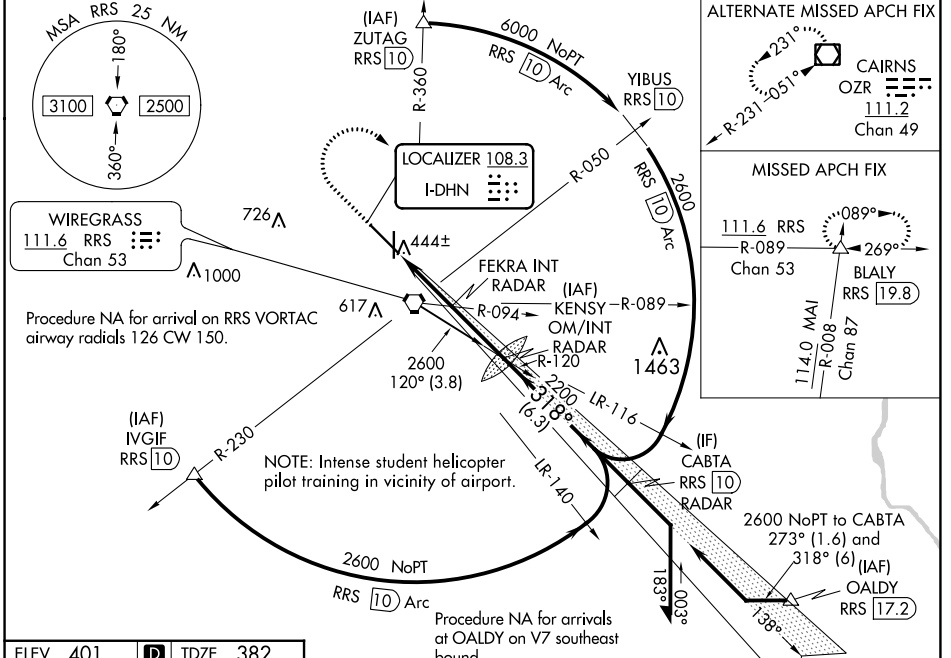
DOTHAN RGNL (DHN)

▲ For inop ALS, increase S-ILS 32 Cat E visibility to RVR 4000, S-LOC 32 Cat C/D/E visibility to 2½ SM, and S-LOC 32 FEKRA fix minimums Cat C/D/E visibility to RVR 5000.
****** RVR 1800 authorized with use of FD or AP or HUD to DA.

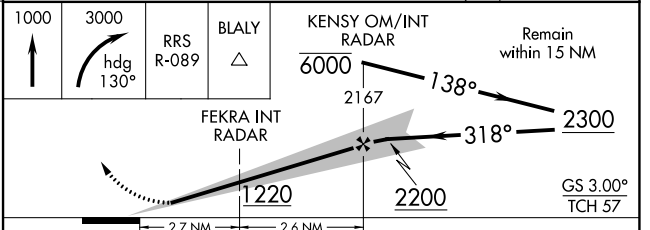
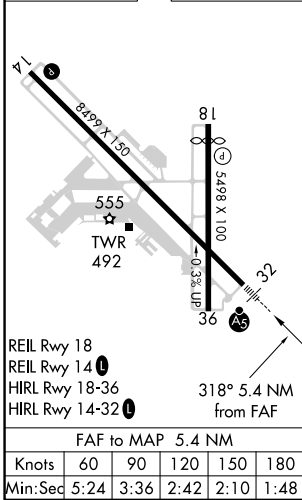
MALSR 

MISSED APPROACH: Climb to 1000 then climbing right turn to 3000 on hdg 130° and on RRS VORTAC R-089 to BLALY INT/RRS VORTAC 19.8 DME and hold.

ATIS 135.725	CAIRNS APP CON* 125.4 327.125	DOTHAN TOWER * 118.4 (CTAF) 0 257.6	GND CON 121.7 348.6	UNICOM 122.95
------------------------	---	--	-------------------------------	-------------------------



ELEV 401	D	TDZE 382
----------	----------	----------



CATEGORY	A	B	C	D	E
S-ILS 32 **	582/24 200 (200-½)				
S-LOC 32	1220/24 838 (900-½)	1220/40 838 (900-¾)	1220-1⅞ 838 (900-1⅞)		
C CIRCLING	1220-1¼	819 (900-1¼)	1220-2½ 819 (900-2½)	1220-2¾ 819 (900-2¾)	1220-3 819 (900-3)
FEKRA FIX MINIMUMS (DUAL VOR RECEIVERS OR RADAR REQUIRED)					
S-LOC 32	720/24 338 (400-½)		720/26 338 (400-½)		
C CIRCLING	860-1 459 (500-1)		920-1½ 519 (600-1½)	1040-2 639 (700-2)	1040-2½ 639 (700-2½)


SE-4, 22 FEB 2024 to 21 MAR 2024

SE-4, 22 FEB 2024 to 21 MAR 2024

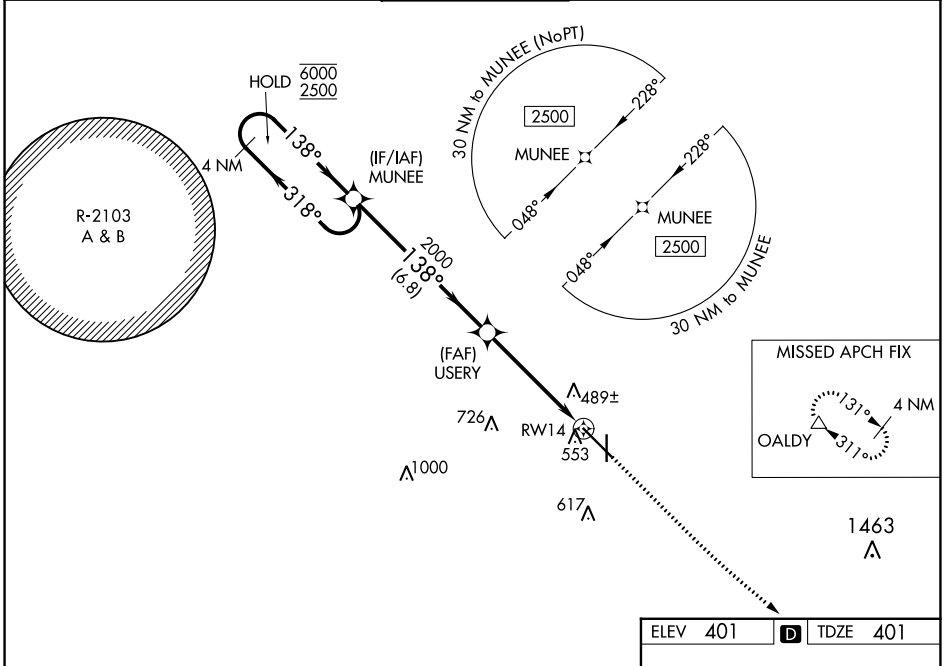
WAAS CH 86504 W14A	APP CRS 138°	Rwy ldg 8496 TDZE 401 Apt Elev 401
--	------------------------	---

RNAV (GPS) RWY 14

DOTHAN RGNL (DHN)

RNP APCH - GPS.		MISSED APPROACH: Climb to 900 then climbing left turn to 3000 direct OALDY and hold.		
 For uncompensated Baro-VNAV systems, LNAV/VNAV NA below -3°C or above 54°C. Intense student helicopter pilot training in vicinity of airport.				

ATIS 135.725	CAIRNS APP CON * 125.4 327.125	DOTHAN TOWER * 118.4 (CTAF) 0 257.6	GND CON 121.7 348.6	UNICOM 122.95
------------------------	--	---	-------------------------------	-------------------------



SE-4, 22 FEB 2024 to 21 MAR 2024

SE-4, 22 FEB 2024 to 21 MAR 2024

4 NM Holding Pattern		VGSi and RNAV glidepath not coincident (VGSi Angle 3.00/TCH 40).		900	3000	OALDY			
MUNEE		USERY		↑	↶	△			
6000 ← 318°		2000		138° to RWY 14					
2500 → 138°		1.2 NM to RWY 14		8399 X 150					
GP 3.00° TCH 54		2000		555					
6.8 NM		3.7 NM		TWR 492					
1.2 NM		<table border="1"> <tr> <td>ELEV 401</td> <td>D</td> <td>TDZE 401</td> </tr> </table>					ELEV 401	D	TDZE 401
ELEV 401	D	TDZE 401							
CATEGORY	A	B	C	D					
LPV DA	601-3/4		200 (200-3/4)						
LNAV/VNAV DA	724-1		323 (400-1)						
LNAV MDA	820-1 419 (500-1)		820-1 1/8 419 (500-1 1/8)		REIL Rwy 18				
CIRCLING	860-1 459 (500-1)		920-1 1/2 639 (700-2)		REIL Rwy 14				
					HIRL Rwy 18-36				
						HIRL Rwy 14-32			

WAAS CH 49118 W18A	APP CRS 183°	Rwy Idg TDZE Apt Elev	5000 393 401
--	------------------------	-----------------------------	---

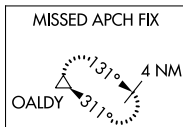
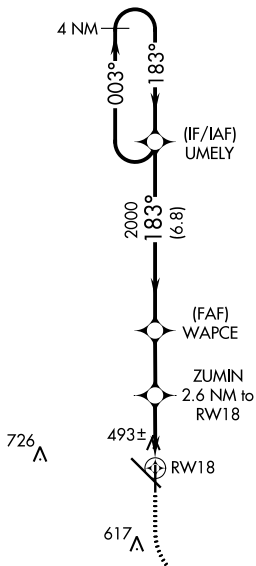
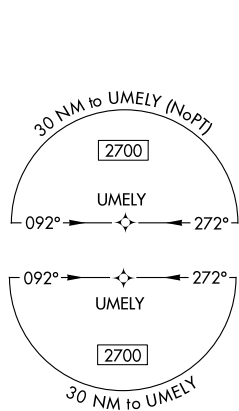
RNAV (GPS) RWY 18

DOTHAN RGNL (DHN)

▼ For uncompensated Baro-VNAV systems, LNAV/VNAV NA below -1.5°C (5°F) or above 41°C (105°F). DME/DME RNP-0.3 NA. Visibility reduction by helicopters NA.

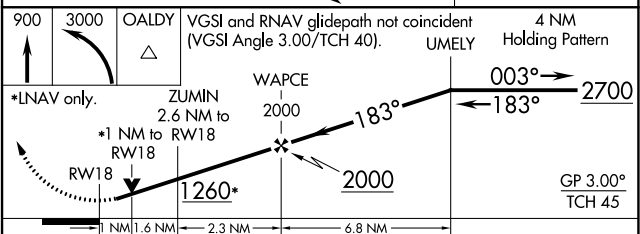
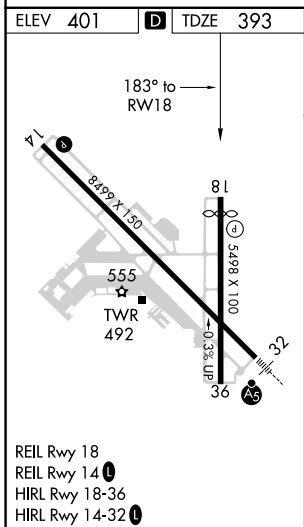
MISSED APPROACH: Climb to 900 then climbing left turn to 3000 direct OALDY and hold.

ATIS 135.725	CAIRNS APP CON * 125.4 327.125	DOTHAN TOWER * 118.4 (CTAF) 0 257.6	GND CON 121.7 348.6	UNICOM 122.95
------------------------	--	---	-------------------------------	-------------------------



SE-4, 22 FEB 2024 to 21 MAR 2024

SE-4, 22 FEB 2024 to 21 MAR 2024



CATEGORY	A	B	C	D
LPV DA		643- ³ / ₄	250 (300- ³ / ₄)	
LNAV/VNAV DA		674- ⁷ / ₈	281 (300- ⁷ / ₈)	
LNAV MDA		760-1	367 (400-1)	
C CIRCLING	860-1	459 (500-1)	920-1 ¹ / ₂ 519 (600-1 ¹ / ₂)	1040-2 639 (700-2)

WAAS CH 93704 W32A	APP CRS 318°	Rwy Idg TDZE Apt Elev	8496 382 401
--	------------------------	-----------------------------	---

RNAV (GPS) RWY 32

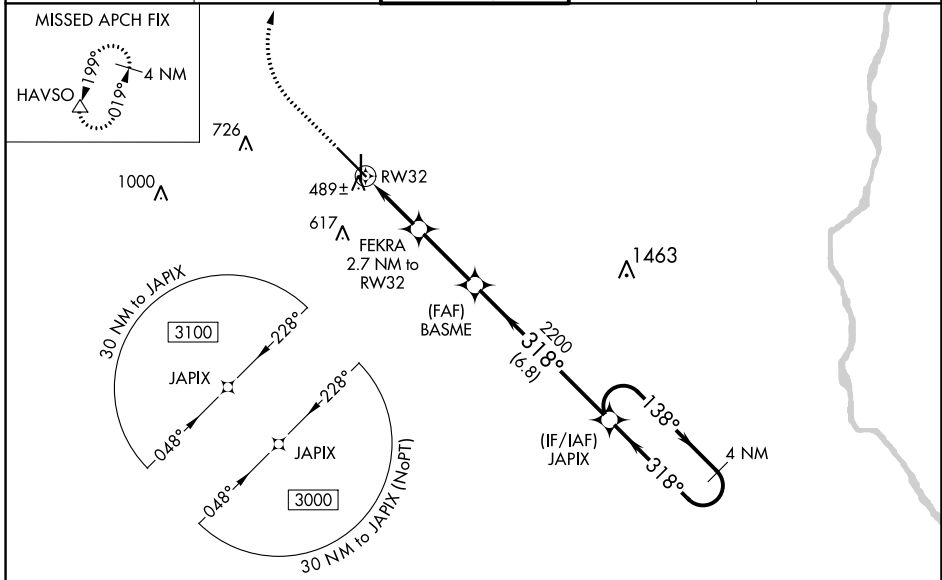
DOTHAN RGNL (DHN)

For uncompensated Baro-VNAV systems, LNAV/VNAV NA below -15°C (5°F) or above 41°C (105°F).
DME/DME RNP-0.3 NA.
**RVR 1800 authorized with use of FD or AP or HUD to DA.

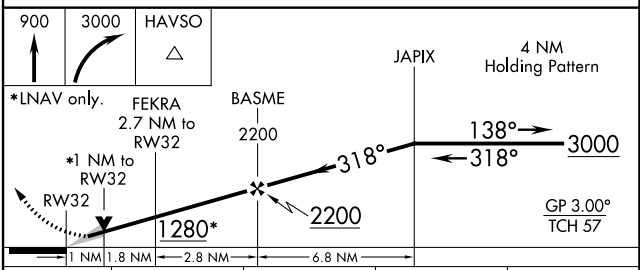
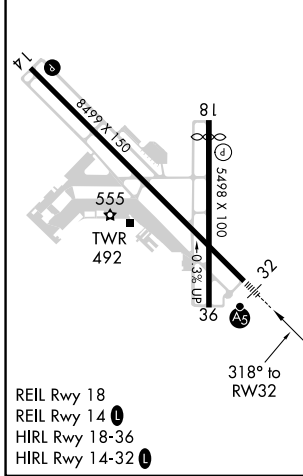
MALSRL
A5

MISSED APPROACH: Climb to 900 then climbing right turn to 3000 direct HAVSO and hold.

ATIS 135.725	CAIRNS APP CON * 125.4 327.125	DOTHAN TOWER* 118.4 (CTAF) 0 257.6	GND CON 121.7 348.6	UNICOM 122.95
------------------------	--	--	-------------------------------	-------------------------



ELEV 401	D	TDZE 382
----------	----------	----------



CATEGORY	A	B	C	D
LPV DA**	582/24 200 (200-½)			
LNAV/VNAV DA	670/24 288 (300-½)			
LNAV MDA	740/24	358 (400-½)	740/30	358 (400-¾)
C CIRCLING	860-1	459 (500-1)	920-1½ 519 (600-1½)	1040-2 639 (700-2)

WAAS CH 61339 W36A	APP CRS 003°	Rwy Idg TDZE Apt Elev	5000 379 401
--	------------------------	-----------------------------	---

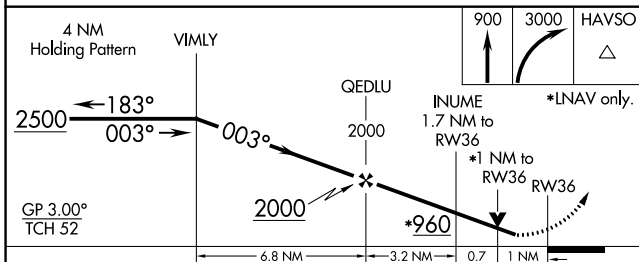
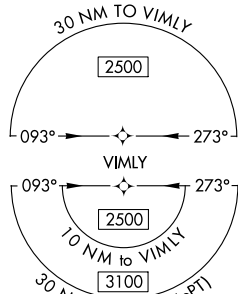
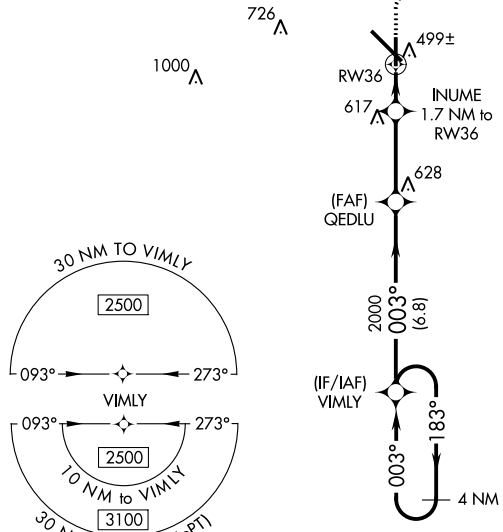
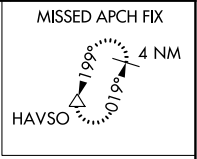
RNAV (GPS) RWY 36

DOTHAN RGNL (DHN)

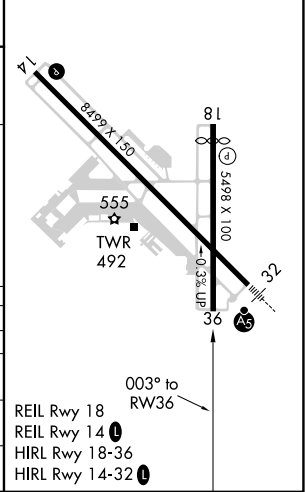
▼ For uncompensated Baro-VNAV systems, LNAV/VNAV NA below -5°C (23°F) or above 54°C (130°F). DME/DME RNP-0.3 NA. Rwy 36 helicopter visibility reduction below ¼ SM NA.

MISSED APPROACH: Climb to 900 then climbing right turn to 3000 direct HAVSO and hold.

ATIS 135.725	CAIRNS APP CON* 125.4 327.125	DOTHAN TOWER* 118.4 (CTAF) 0 257.6	GND CON 121.7 348.6	UNICOM 122.95
------------------------	---	---	-------------------------------	-------------------------



ELEV 401	D TDZE 379
----------	-------------------



CATEGORY	A	B	C	D
LPV DA	651-7/8		272 (300-7/8)	
LNAV/VNAV DA	681-1		302 (300-1)	
LNAV MDA	760-1	381 (400-1)	760-1 1/8	381 (400-1 1/8)
C CIRCLING	860-1	459 (500-1)	920-1 1/2 519 (600-1 1/2)	1040-2 639 (700-2)

SE-4, 22 FEB 2024 to 21 MAR 2024

SE-4, 22 FEB 2024 to 21 MAR 2024

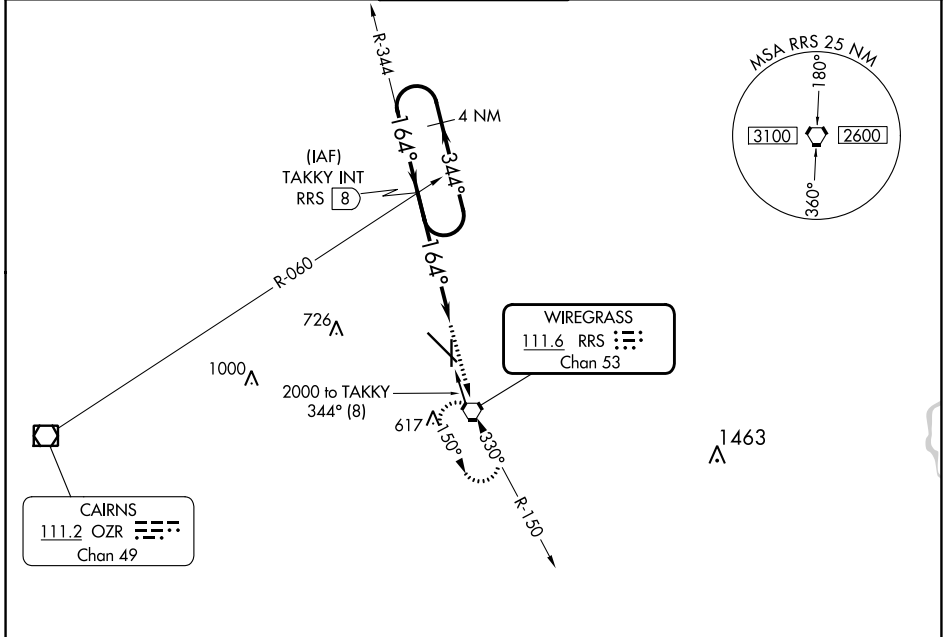
VORTAC RRS 111.6 Chan 53	APP CRS 164°	Rwy Idg TDZE Apt Elev	5000 395 401
--	------------------------	-----------------------------	---

VOR RWY 18

DOTHAN RGNL (DHN)

MISSED APPROACH: Climb to 2000 direct RRS VORTAC and hold.

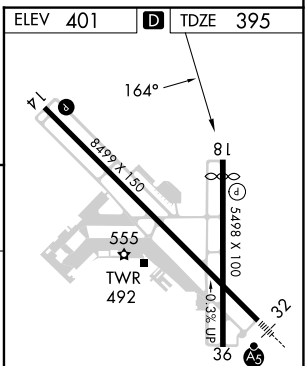
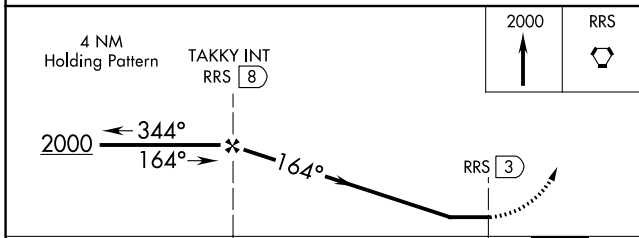
ATIS 135.725	CAIRNS APP CON ★ 125.4 327.125	DOTHAN TOWER ★ 118.4 (CTAF) 257.6	GND CON 121.7 348.6	UNICOM 122.95
------------------------	--	--	-------------------------------	-------------------------



SE-4, 22 FEB 2024 to 21 MAR 2024

SE-4, 22 FEB 2024 to 21 MAR 2024

CAIRNS 111.2 OZR Chan 49	WIREGRASS 111.6 RRS Chan 53
--------------------------------	-----------------------------------



CATEGORY	A	B	C	D
S-18	820-1	425 (500-1)	820-1¼	425 (500-1¼)
CIRCLING	860-1	459 (500-1)	920-1½	1040-2
			519 (600-1½)	639 (700-2)

ELEV 401	D	TDZE 395			
REIL Rwy 18	REIL Rwy 14	HIRL Rwy 18-36			
HIRL Rwy 14-32	FAF to MAP 5 NM				
Knots	60	90	120	150	180
Min:Sec	5:00	3:20	2:30	2:00	1:40

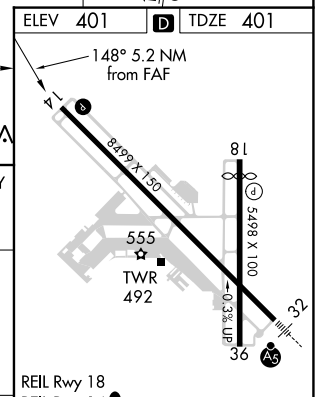
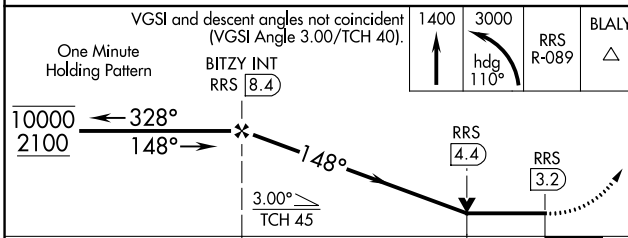
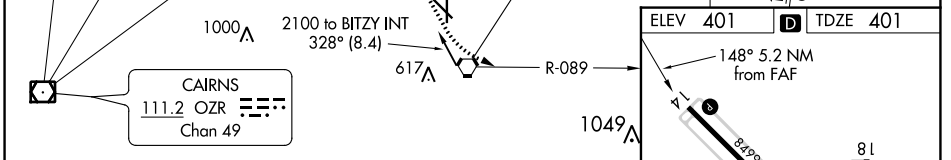
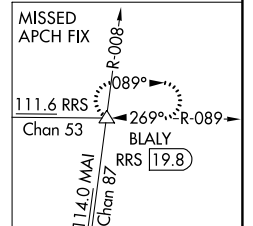
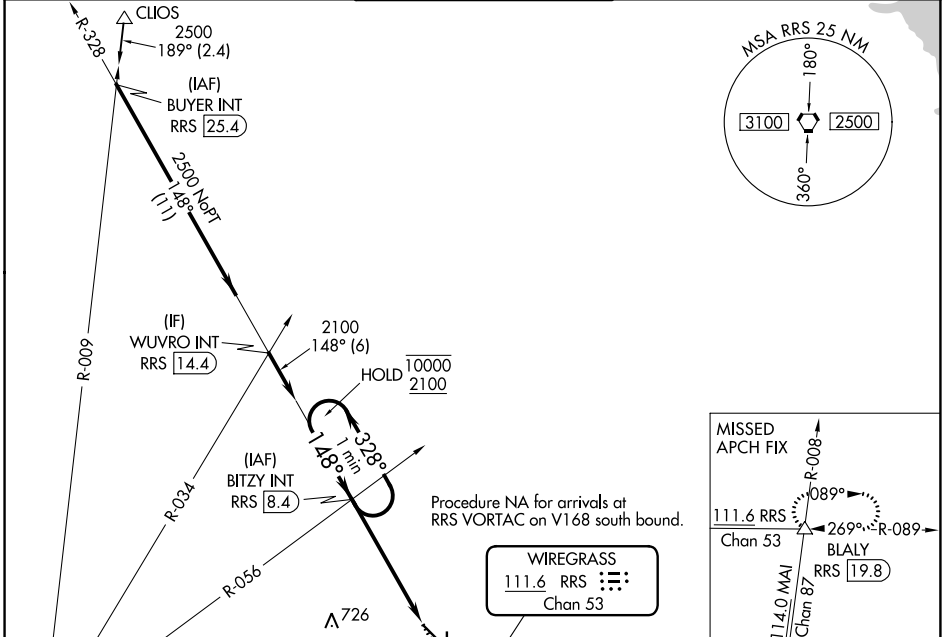
VORTAC RRS 111.6 Chan 53	APP CRS 148°	Rwy Idg TDZE Apt Elev	8496 401 401
--	------------------------	-----------------------------	---

VOR or TACAN RWY 14

DOTHAN RGNL (DHN)

⚠ MISSED APPROACH: Climb to 1400 then climbing left turn to 3000 on heading 110° and on RRS VORTAC R-089 to BLALY INT/RRS 19.8 DME and hold.

ATIS 135.725	CAIRNS APP CON ★ 125.4 327.125	DOTHAN TOWER★ 118.4 (CTAF) 257.6	GND CON 121.7 348.6	UNICOM 122.95
------------------------	--	--	-------------------------------	-------------------------



CATEGORY	A	B	C	D	E	ELEV 401 TDZE 401
S-14	820-1	419 (500-1)	820-1½	419 (500-1½)		148° 5.2 NM from FAF
CIRCLING	860-1	459 (500-1)	920-1½ 519 (600-1½)	1040-2 639 (700-2)	1040-2¼ 639 (700-2¼)	REIL Rwy 18 REIL Rwy 14 HIRL Rwy 18-36 HIRL Rwy 14-32 FAF to MAP 5.2 NM
						Knots 60 90 120 150 180 Min:Sec 5:12 3:28 2:36 2:05 1:44

SE-4, 22 FEB 2024 to 21 MAR 2024

SE-4, 22 FEB 2024 to 21 MAR 2024

VORTAC RRS 111.6 Chan 53	APP CRS 335°	Rwy Idg TDZE Apt Elev	N/A N/A 401
--	------------------------	-----------------------------	--

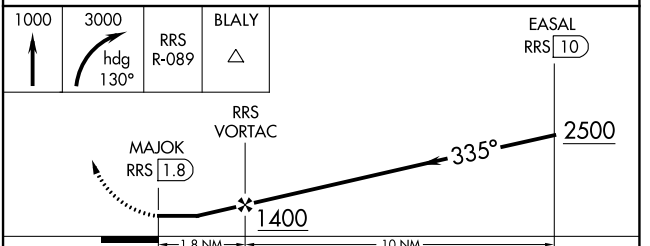
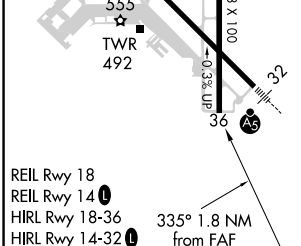
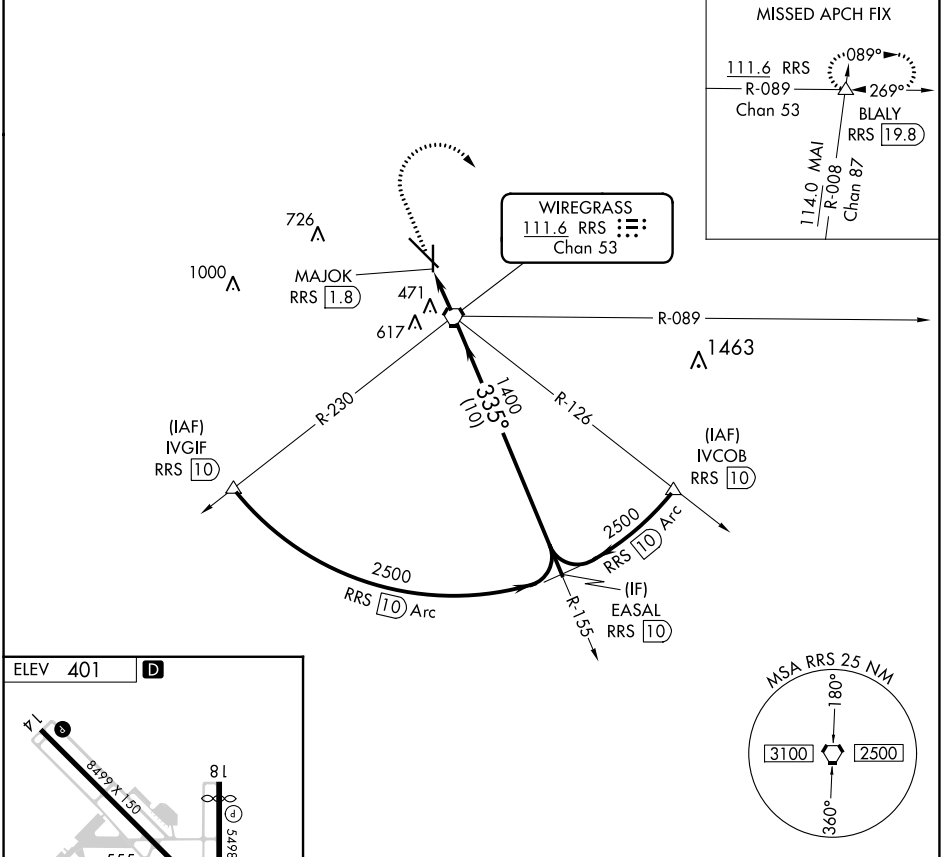
VOR or TACAN-A

DOTHAN RGNL (DHN)

DME required.

MISSED APPROACH: Climb to 1000 then climbing right turn to 3000 on heading 130° and RRS VORTAC R-089 to BLALY INT/RRS 19.8 DME and hold.

ATIS 135.725	CAIRNS APP CON * 125.4 327.125	DOTHAN TOWER* 118.4 (CTAF) 0 257.6	GND CON 121.7 348.6	UNICOM 122.95
------------------------	--	---	-------------------------------	-------------------------



FAF to MAP 1.8 NM					CATEGORY	A	B	C	D	E
Knots	60	90	120	150	180	860-1	459 (500-1)	920-1½	1040-2	1040-2¼
Min:Sec	1:48	1:12	0:54	0:43	0:36	<input checked="" type="checkbox"/> CIRCLING		519 (600-1½)	639 (700-2)	639 (700-2¼)

SE-4, 22 FEB 2024 to 21 MAR 2024

SE-4, 22 FEB 2024 to 21 MAR 2024