

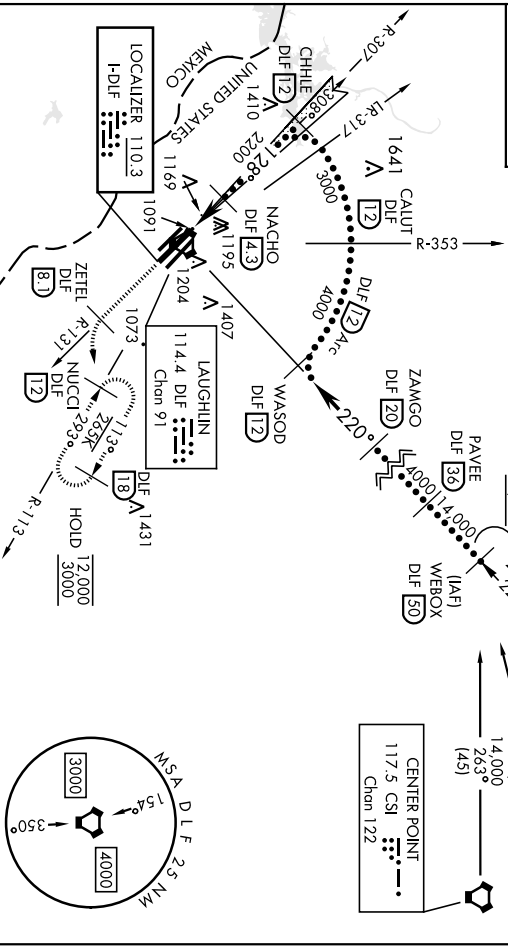
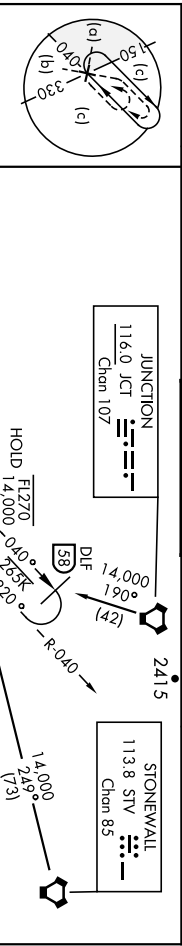
DEL RIO, TEXAS

H-I LS or LOC/DME Z RWY 13C

LOC/DME 110.3	APCH CRS 128°	Rwy Idg TDZE 1082 1078 1077	13C 13L 13R 8852 8316 6571	AL-111 [USAF]	LAUGHLIN AFB (KDLF)
ATIS *	DEL RIO APP CON	TOWER *	GND CON	CINC DEI	
114.4 269.9	119.6 259.1	125.2 307.375	275.8	120.5 335.8	

When ALS inop, increase RVR to 40 and vis to 3/4 mile.
 ** When ALS inop, increase CAT AB RVR to 55 and vis to 1 mile. CAT CDE RVR to 50 and vis to 1 mile.
 *** Circling W of Rwy 13R-31L not authorized.

ALSF-1
 MISSED APPROACH: Climb to 3000 on DLF VORTAC R-131 to 8.1 DME (ZETTEL), then turn left to intercept DLF R-113 to 12 DME (NUCCI) and hold.



SC-3, 22 FEB 2024 to 21 MAR 2024

SC-3, 22 FEB 2024 to 21 MAR 2024

EMERG SAFE ALT 100 NM 16,000'

CATEGORY	A	B	C	D	E	ELEV 1082	TDZE 13C 1082
S-ILS 13C **	1282/24	200	1420/26	338 (400-1/2)			TDZE 13L 1078
S-LOC 13C **	1420/24 338 (400-1/2)		1440-1 362 (400-1)	1440-2 362 (400-2)			TDZE 13R 1077
SIDESTEP 13L	1440-1 362 (400-1)		362 (400-1/2)	1480-2 403 (400-2)			
SIDESTEP 13R	1480-1 403 (400-1)		1480-1 1/2 403 (400-1/2)	1700-2 403 (400-2)			
CIRCLING	1500-1 1540-1 418 (500-1)	1700-1 1700-2 458 (500-1)	1700-1 3/4 618 (700-1/4)	1740-2 2 1/4 658 (700-2 1/4)			



DEL RIO, TEXAS
 Amdt 6 07SEP23

LAUGHLIN AFB (KDLF)
 H-I LS or LOC/DME Z RWY 13C

DEL RIO, TEXAS

HI-ILS or LOC/DME Z RWY 31C

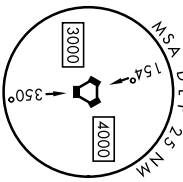
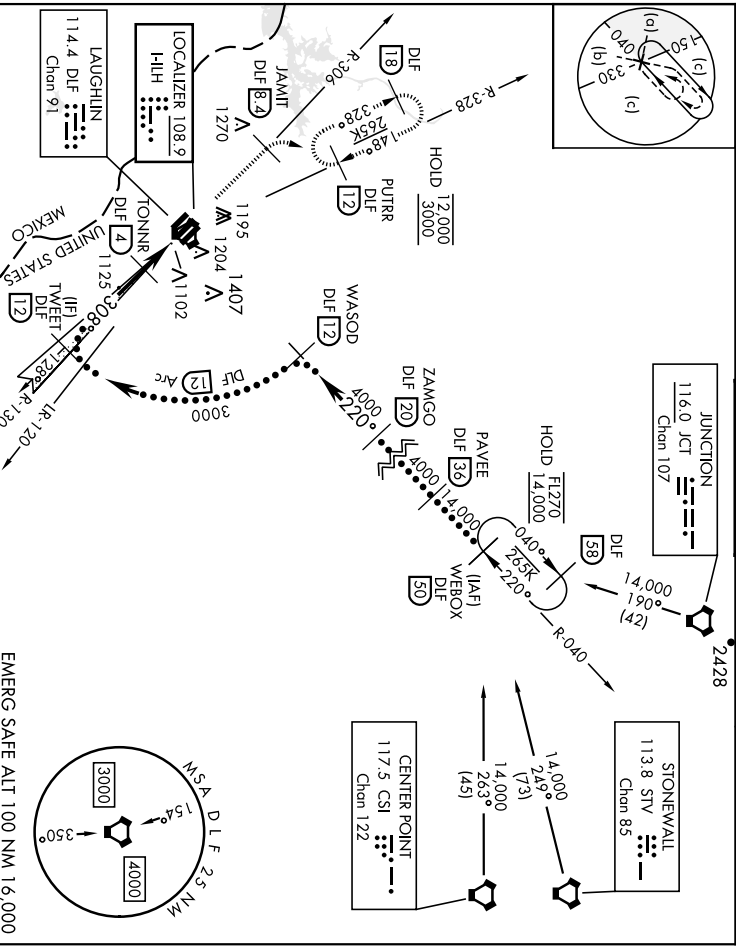
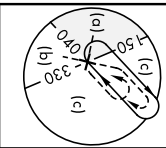
LOC/HLH 108.9	APCH CRS 308°	Rwy Idg TDZE Appt Elev 1079 1080 1078 1082	31C 8852 6282 8316	31L 1079 1080 1078	31R 1078 1078
-------------------------	-------------------------	--	------------------------------	------------------------------	-------------------------

AL-111 [USAF]

LAUGHUIN AFB (KDLF)

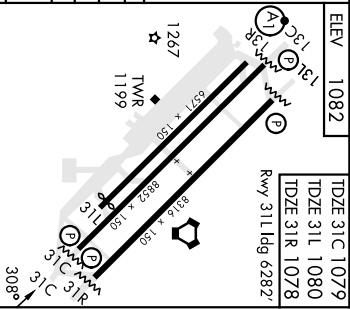
* Circling not authorized in sector SW of Rwy 13R-31L.
 MISSED APPROACH: Climb to 3000 on DIF VORTAC R-306 to 8.4 DME (JAMIT), then turn right to intercept DIF R-328 to 12 DME (PUTRR) and hold.

ATIS ★ 114.4 269.9	DEL RIO APP CON 119.6 259.1	TOWER ★ 125.2 307.375	GND CON 275.8	CINC DEL 120.5 335.8
------------------------------	---------------------------------------	---------------------------------	-------------------------	--------------------------------



EMERG SAFE ALT 100 NM 16,000

3000 JAMIT DIF R-306	PUTRR DIF R-328	TONNRR DIF A	TWFEET DIF 12	ELEV 1082	TDZE 31C 1079 TDZE 31L 1080 TDZE 31R 1078
VGSI and descent angles not coincidental.	FOVMO DIF 13	TONNRR DIF 4	TWFEET DIF 12		Rwy 31L ldg 6282'
CATEGORY	A	B	C	D	E
SLIS 31C	1279-¾	200	1360-¾	281	(300-¾)
S-LOC 31C	1360-1 281 (300-1)		1360-7/8	281	(300-7/8)
SIDESTEP 31L	1360-1 280 (300-1)		1360-1½	280	(300-2)
SIDESTEP 31R	1380-1 302 (300-1)		1380-1½	302	(300-2)
CIRCLING*	1500-1 1540-1 418 (500-1) 458 (500-1)	1700-1 618 (700-1¾)	1700-2 618 (700-2)	1740-2½ 658 (700-2½)	



DEL RIO, TEXAS
AmhI 6 05OCT23

29°22'N-100°47'W

LAUGHUIN AFB (KDLF)

HI-ILS or LOC/DME Z RWY 31C

LOC I-DLF

ARCH CRS

Rwy Idg 8852 8316 6571
TDZE 1082 1078 1077
Aptl Elev 1052

ILS or LOC/DME Y RWY 13C

LA-111 (USAF)

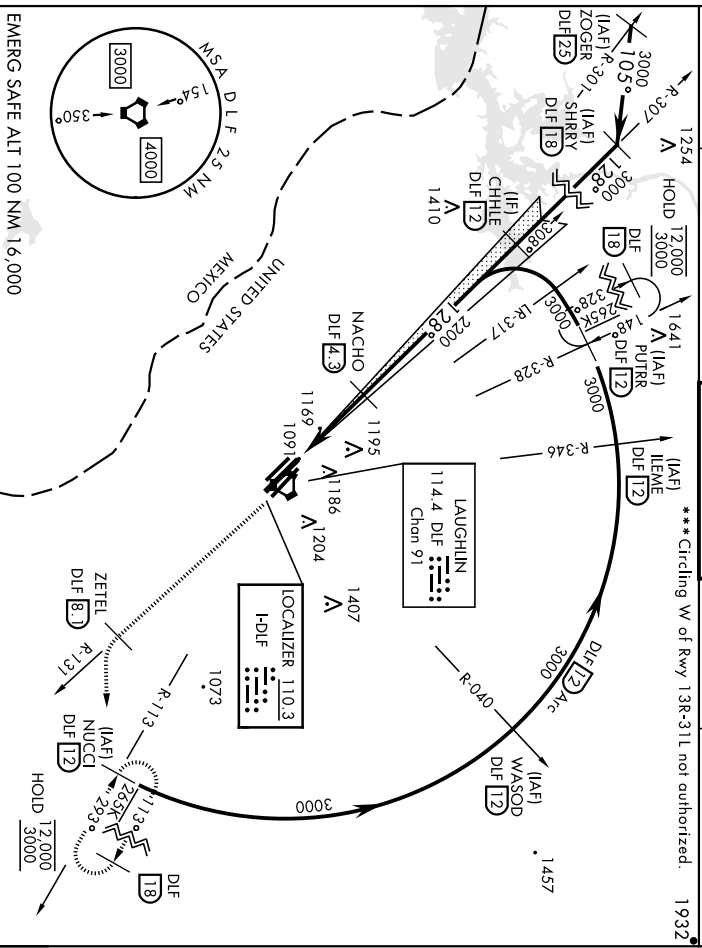
LAUGHLIN AFB (KDLF)

▲ ** When AIS Inop, increase RVR to 40 and vis to 3/4 mile.
** When AIS Inop, increase CAT A/R RVR to 55 and vis to 1 mile; CAT C/D RVR to 50 and vis to 1 mile.

▲1 MISSED APPROACH: Climb to 3000 on DLF
VORTRAC R-131 to 8.1 DME (ZETEL), then turn left to
Intercept DIF R-113 to 12 DME (NUCCI) and hold.

ATIS *	DEL RIO APP CON	TOWER*	CND CON	CINC DEL
114.4 269.9	119.6 259.1	125.2 307.375	275.8	120.5 335.8

***Circling W of Rwy 13R-31L not authorized. 1932



EMERG SAFE ALT 100 NM 16,000

SS 3.00° TCH 38					
CATEGORY	A	B	C	D	E
SMIS 13C*	1282/24		200		
S-LOC 13C**	1420/24 338 (400-1/2)		1420/26 338 (400-1/2)		
SIDESTEP 13L	1440-1 362 (400-1)		1440-1 1/2 362 (400-2)		
SIDESTEP 13R	1480-1 403 (400-1)		1480-1 1/2 403 (400-2)		
CIRCLING	1500-1 418 (500-1)	1540-1 458 (500-1)	1700-1 3/4 618 (700-1 3/4)	1700-2 618 (700-2)	1740-2 1/4 658 (700-2 1/4)

DEL RIO, TEXAS LAUGHLIN AFB (KDLF)
 Arr'd 6 050CT23
 29°22'N-100°47'W
 ILS or LOC/DME Y RWY 13C

DEL RIO, TEXAS

LOC HLH	APCH CRS	Rwy Idg	31C	31L	31R
108.9	308°	TDZE	8852	6282	8316
		Appl Elev	1079	1080	1078

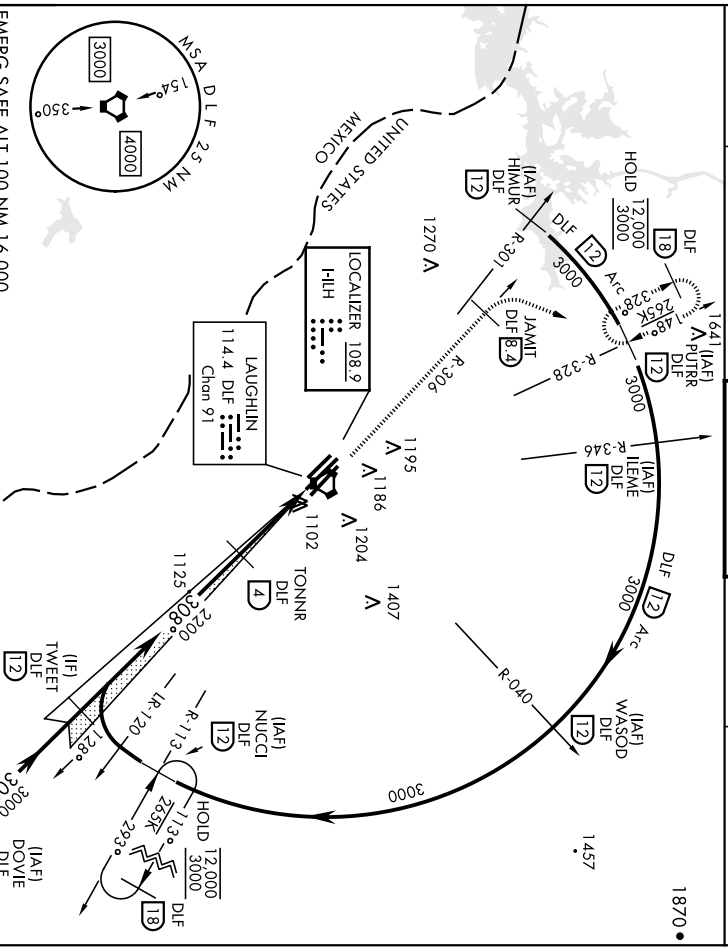
ILS or LOC/DME Y RWY 31C

AL-111 [USAF] LAUGHLIN AFB (KDLF)

* Circling w/ of Rwy 13R-31L not authorized.

MISSED APPROACH: Climb to 3000 on DIF VORTAC R-306 to 8.4 DME (JAMIT), then turn right to intercept DIF R-328 to 1.2 DME (PUTRR) and hold.

ATIS *	DEL RIO APP CON	TOWER *	GND CON	CLNC DEL
114.4 269.9	119.6 259.1	125.2 307.375	275.8	120.5 335.8

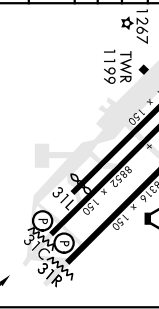


SC-3, 22 FEB 2024 to 21 MAR 2024

SC-3, 22 FEB 2024 to 21 MAR 2024

3000	JAMIT	PUTRR	VGS1 and descent angles not coincident			TWEET
DIF R-306	DIF B 2	DIF R-328	DIF L 12			DIF L 12
FOVMO			TONNR			
DIF L 13	DIF L 7	DIF L 12	DIF L 7			DIF L 7
0.7 NM			2.7 NM			GS 3.00°
						TCH 49

CATEGORY	A	B	C	D	E
S-ILS 31C	1360-1 281 (300-1)	1360-7/8	281 (300-7/8)		
S-LOC 31C	1360-1 281 (300-1)	1360-7/8	281 (300-7/8)		
SIDESTEP 31L	1360-1 280 (300-1)	280 (300-1/2)	1360-2 280 (300-2)		
SIDESTEP 31R	1380-1 302 (300-1)	1380-1 1/2	1380-2 302 (300-2)		
CIRCLING*	1500-1 1540-1	1700-1 1740-2	1740-2 1740-2 1/4		
	418 (500-1) 458 (500-1)	618 (700-1) 618 (700-2)	658 (700-2) 658 (700-2 1/4)		



DEL RIO, TEXAS LAUGHLIN AFB (KDLF)
 Amdt 6 05OCT23 ILS or LOC/DME Y RWY 31C

RNAV (GPS) RWY 13C

APCH CRS 128°	Rwy Idg 8852 8316 6571	13C	13L	13R
	TDZE 1082 1078 1077			
	Arprt Elev 1082			

AL-111 (USAF)

LAUGHLIN AFB (KDLF)

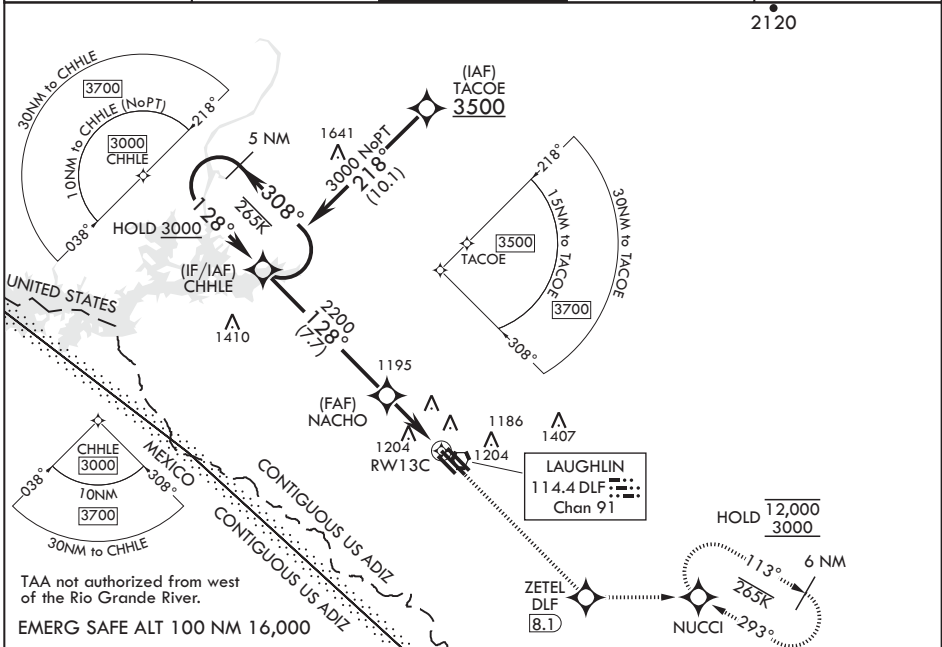
RNP APCH - GPS



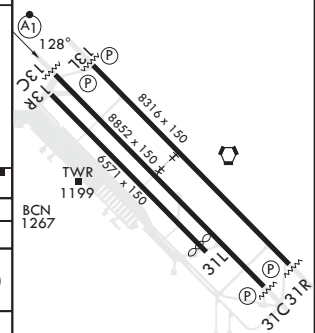
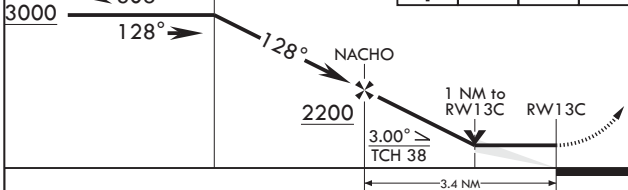
MISSED APPROACH: Climb to 3000 direct ZETEL, then track 083° to NUCCI and hold.

▼ * When ALS inop, increase CAT AB RVR to 55 and vis to 1 mile, CAT CDE vis to 1 1/4 miles.
** Circling SW of Rwy 13R-31L not authorized.

ATIS ★ 114.4 269.9	DEL RIO APP CON 119.6 259.1	TOWER ★ 125.2 307.375	GND CON 275.8	CLNC DEL 120.5 335.8
------------------------------	---------------------------------------	---------------------------------	-------------------------	--------------------------------



5 NM Holding Pattern	CHHLE	3000	ZETEL	tr 083°	NUCCI	ELEV 1082	TDZE 13C 1082	TDZE 13L 1078	TDZE 13R 1077
----------------------	-------	------	-------	---------	-------	-----------	---------------	---------------	---------------



CATEGORY	A	B	C	D	E
LNAV MDA*	1440/24 358 (400-½)		1440/30 358 (400-¾)		
SIDESTEP 13L	1440-1 362 (400-1)		1440-1½ 362 (400-1½)	1440-2 362 (400-2)	
SIDESTEP 13R	1480-1 403 (400-1)		1480-1½ 403 (400-1½)	1480-2 403 (400-2)	
☐ CIRCLING**	1500-1 418 (500-1)	1540-1 458 (500-1)	1700-1¾ 618 (700-1¾)	1700-2 618 (700-2)	1740-2¼ 658 (700-2¼)

Rwy 31L Idg 6282'
MIRL Rwy 13R-31L
HIRL Rws 13C-31C, 13L-31R

RNAV (GPS) RWY 13C

SC-3, 22 FEB 2024 to 21 MAR 2024

SC-3, 22 FEB 2024 to 21 MAR 2024

RNAV (GPS) RWY 31C

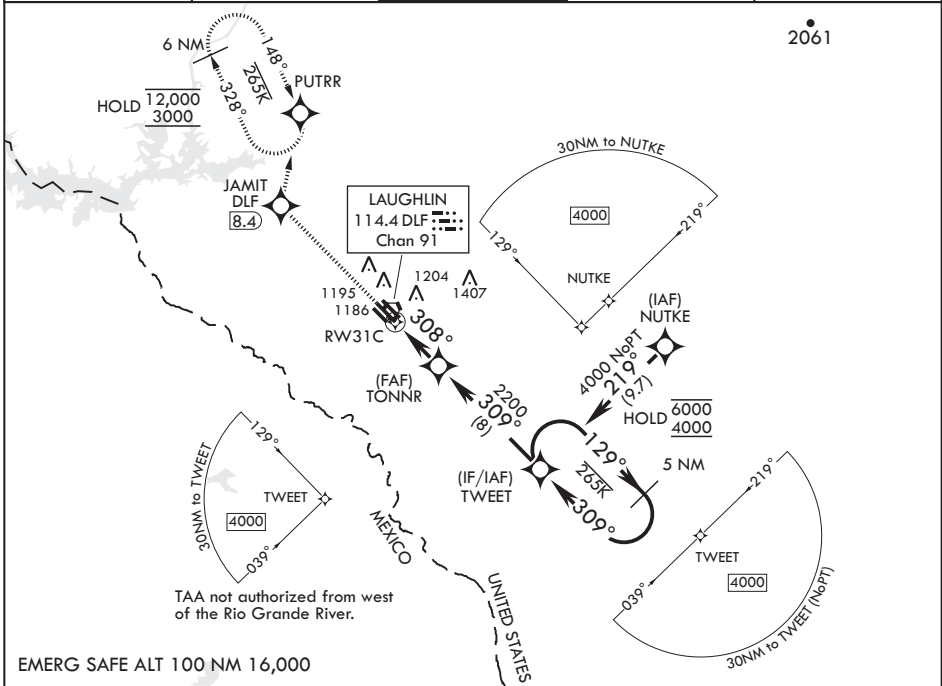
APCH CRS 308°	Rwy Idg 8852 6282 8316	31C	31L	31R
	TDZE 1079 1080 1078			
	Arprt Elev 1082			

AL-111 (USAF)

LAUGHLIN AFB (KDLF)

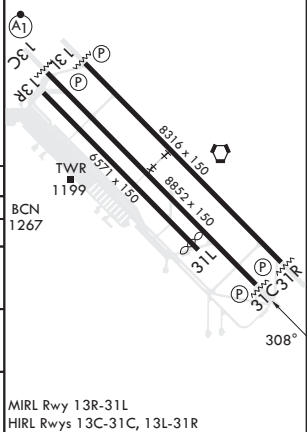
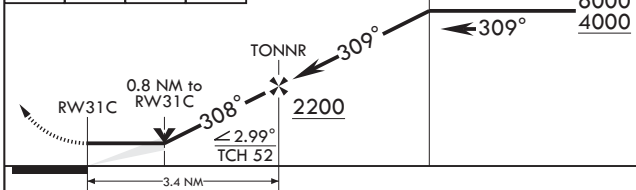
RNP APCH - GPS	MISSED APPROACH: Climb to 3000 direct JAMIT, then track 005° to PUTRR and hold.
----------------	---

ATIS* 114.4 269.9	DEL RIO APP CON 119.6 259.1	TOWER* 125.2 307.375	GND CON 275.8	CLNC DEL 120.5 335.8
-----------------------------	---------------------------------------	--------------------------------	-------------------------	--------------------------------



EMERG SAFE ALT 100 NM 16,000

3000	JAMIT	tr 005°	PUTRR	ELEV 1082	TDZE 31C 1079
				Rwy 31L Idg 6282'	TDZE 31L 1080
					TDZE 31R 1078



CATEGORY	A	B	C	D	E
LNAV MDA	1380-1 301 (300-1)		1380-7/8 301 (300-7/8)		
SIDESTEP31R	1380-1 302 (300-1)		1380-1 1/2 302 (300-1 1/2)	1380-2 302 (300-2)	
SIDESTEP31L	1420-1 340 (400-1)		1420-1 1/2 340 (400-1 1/2)	1420-2 340 (400-2)	
CIRCLING*	1500-1 418 (500-1)	1540-1 458 (500-1)	1700-1 1/4 618 (700-1 1/4)	1700-2 618 (700-2)	1740-2 1/4 658 (700-2 1/4)

RNAV (GPS) RWY 31C

SC-3, 22 FEB 2024 to 21 MAR 2024

SC-3, 22 FEB 2024 to 21 MAR 2024

DEL RIO, TEXAS

RNAV (GPS) B

APCH CRS 340°	Rwy Idg TDZE Arprt Elev	N/A N/A 1082
-------------------------	-------------------------------	---------------------------

AL-111 (USAF)

LAUGHLIN AFB (KDLF)

RNP APCH - GPS

MISSED APPROACH: Climbing left turn to 4000 direct ZOBUS, cross SCIFI at 4000, expect radar vectors.

RADAR required

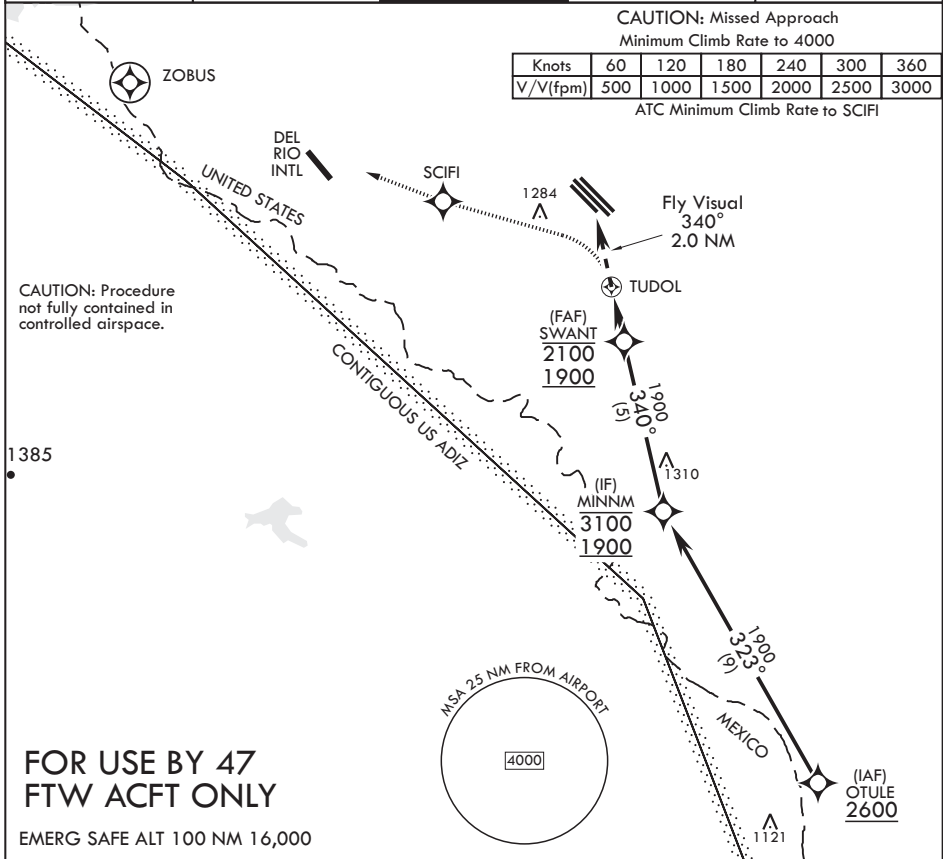
* Circling not authorized in sector NE of Rwy 13R-31L.

ATIS * 114.4 269.9	DEL RIO APP CON 119.6 259.1	TOWER * 125.2 307.375	GND CON 275.8	CLNC DEL 120.5 335.8
------------------------------	---------------------------------------	---------------------------------	-------------------------	--------------------------------

CAUTION: Missed Approach
Minimum Climb Rate to 4000

Knots	60	120	180	240	300	360
V/V(fpm)	500	1000	1500	2000	2500	3000

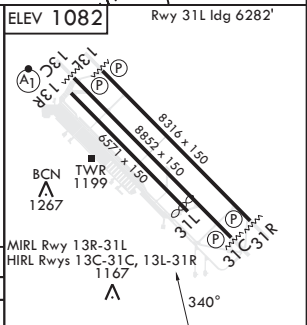
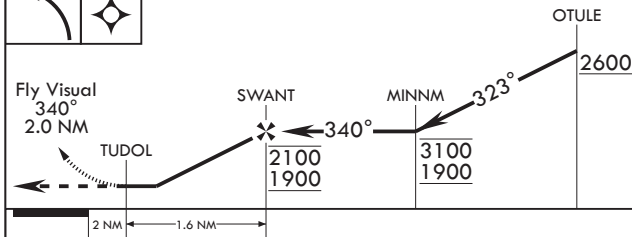
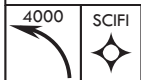
ATC Minimum Climb Rate to SCIFI



CAUTION: Procedure not fully contained in controlled airspace.

FOR USE BY 47 FTW ACFT ONLY

EMERG SAFE ALT 100 NM 16,000



CATEGORY	A	B	C	D
C CIRCLING*	1600-3	518 (1000-3)	NA	NA

DEL RIO, TEXAS

29°22'N - 100°47'W

LAUGHLIN AFB (KDLF)

Amdt 6 07SEP23

RNAV (GPS) B

SC-3, 22 FEB 2024 to 21 MAR 2024

SC-3, 22 FEB 2024 to 21 MAR 2024

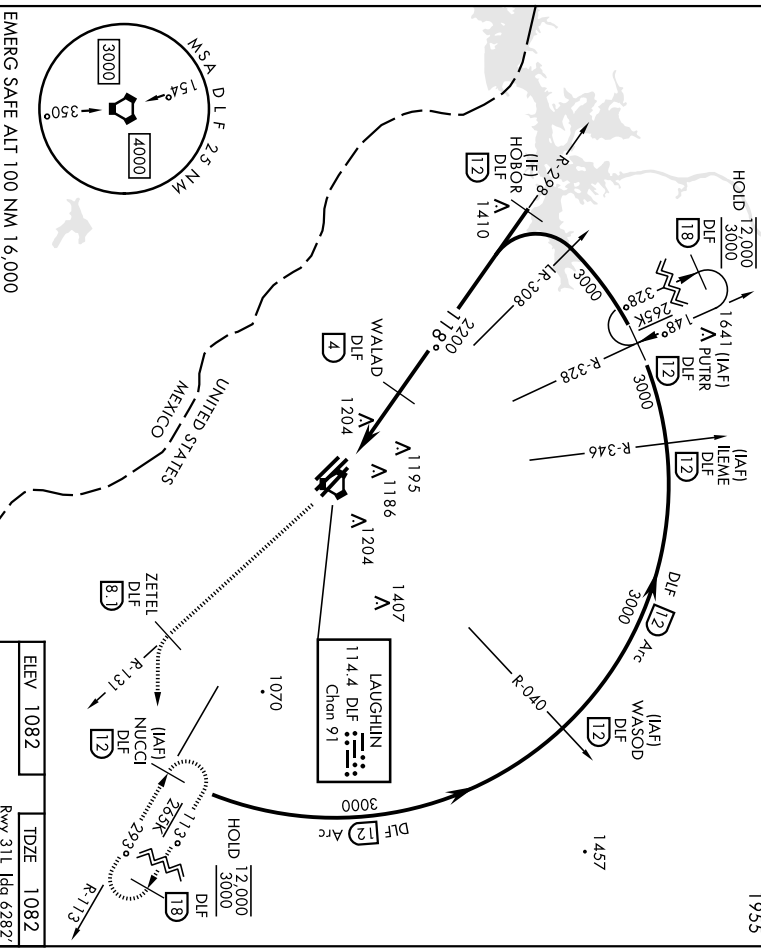
DEL RIO, TEXAS

VOR/DME Rwy 13C

23138

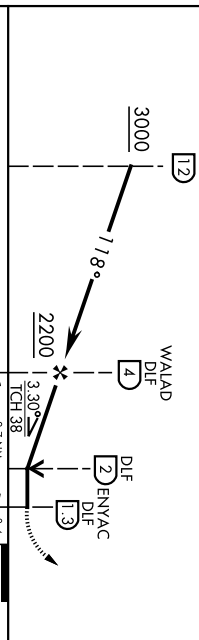
VORTAC DLF 114.4 Chan 91	APCH CRS 118°	Rwy Idg TDZE Aspl Elev 1082 1082	AL-111 [USAF]	MISSED APPROACH: Climb to 3000 on DLF VORTAC R-131 to 8.1 DME (ZETEL), then turn left to intercept DLF R-113 to 12 DME (NUCCI) and hold.
ATIS *	DEL RIO AP CON	119.6 259.1	TOWER *	GND CON
114.4 269.9			125.2 307.375	275.8
				CINC DEL
				120.5 335.8

1955*

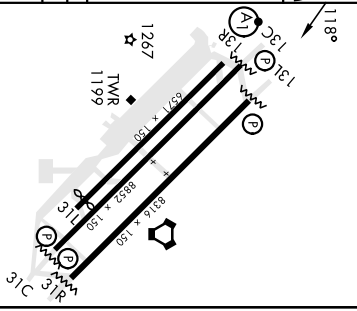


EMERG SAFE ALT 100 NM 16,000

VGSI and descent angles not coincident.



ELEV 1082	TDZE 1082
Rwy 31L Idg 62827	



CATEGORY	A	B	C	D	E
S-13C *	1480/24 398 (400-1/2)	1480/40	398	(400-1/4)	
** CIRCLING	1500-1 418 (500-1)	1540-1 458 (500-1)	1700-1 1/4 618 (700-1 1/4)	1700-2 618 (700-2)	1740-2 1/4 658 (700-2 1/4)

DEL RIO, TEXAS
Ampl 4 20APR23
29°22'N-100°47'W

LAUGHLIN AFB (KDLF)
VOR/DME Rwy 13C

DEL RIO, TEXAS

VOR/DME Rwy 31C

23138

VORTAC DLF 114.4 Chn 91	APCH CRS 322°	Rwy Idg TDZE Appt Elev 1079 1082
---	-------------------------	--

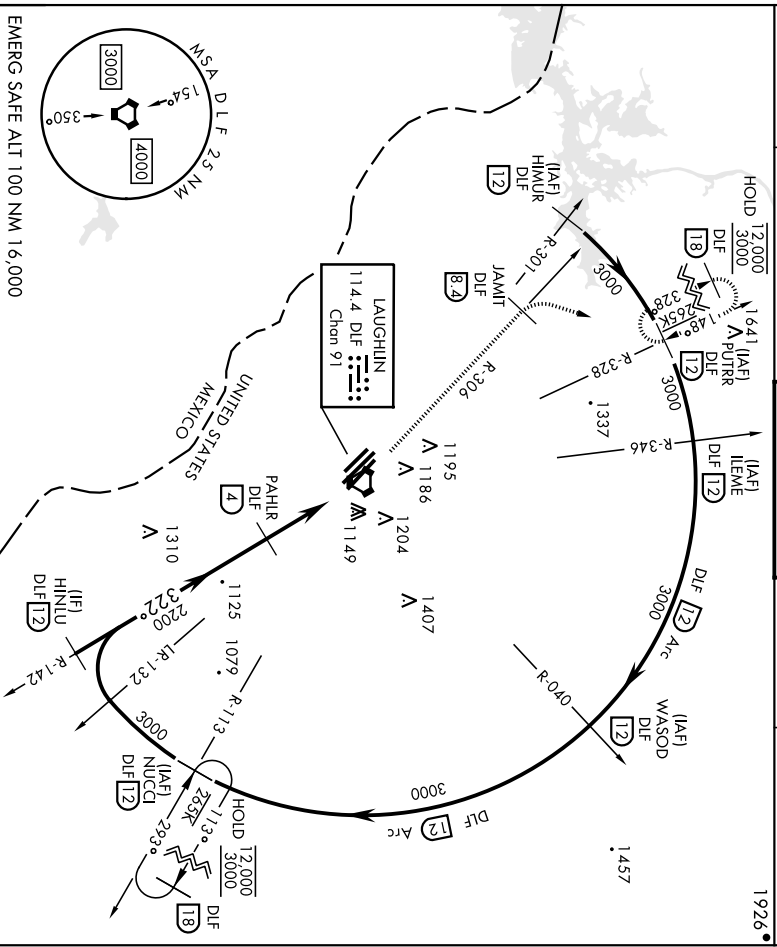
AL-111 [USAF]

LAUGHLIN AFB (KDLF)

▼ *Circling not authorized in sector SW of Rwy 13R-31L.

MISSED APPROACH: Climb to 3000 on DLF VORTAC R-306 to 8.4 DME (JAMIT), then turn right to intercept DLF R-328 to 12 DME (PUTRR), and hold.

ATIS ★ 114.4 269.9	DEL RIO APP CON 119.6 259.1	TOWER ★ 145.2 307.375	GND CON 275.8	CINCL DEL 120.5 335.8
------------------------------	---------------------------------------	---------------------------------	-------------------------	---------------------------------

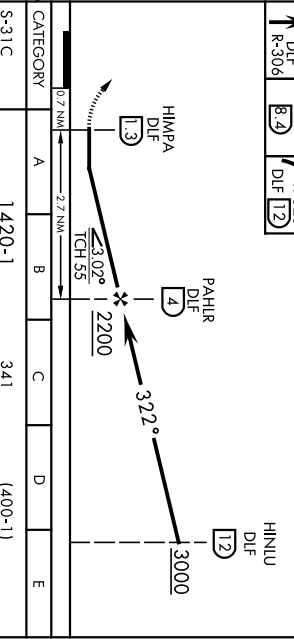
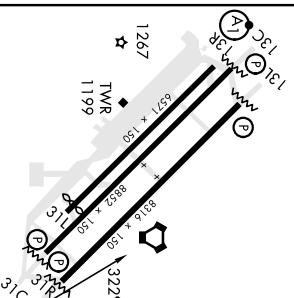


EMERG SAFE ALT 100 NM 16,000

ELEV 1082	TDZE 1079
-----------	-----------

Rwy 31L Idg 6282'

3000 DLF	JAMIT DLF	PUTRR DLF
R-306	R-306	R-328
8.4	8.4	12



MRL Rwy 13R-31L
HRL Rwy 13C-31C, 13I-31R

DEL RIO, TEXAS

Amhd 4 20APR23

5-31C	1420-1	341	(400-1)
CIRCLING*	1500-1 418 (500-1)	1540-1 458 (500-1)	1700-1 618 (700-134)
	1700-2 618 (700-2)	1740-2 658 (700-2)	

29°22'N-100°47'W

LAUGHLIN AFB (KDLF)

VOR/DME Rwy 31C