

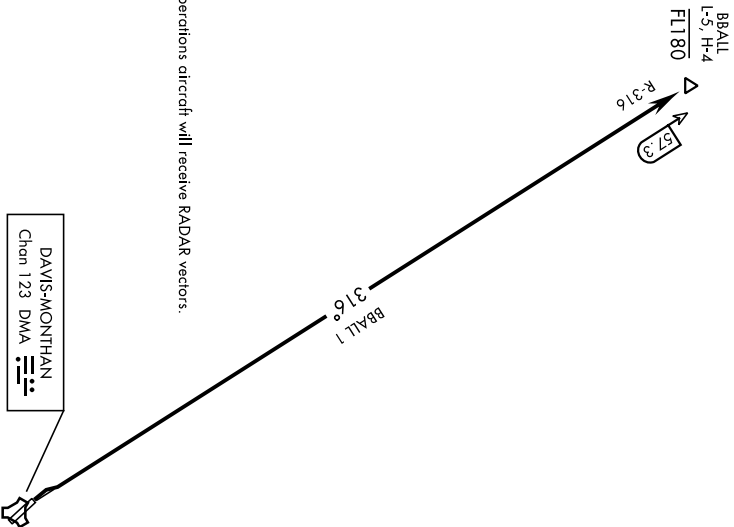
BBALL ONE DEPARTURE RWY 30 (BBALL1 • BBALL)

DAVIS-MONTHAN AFB (KDMA)
TUCSON, ARIZONA

AL-429 [USAF]

DME required

ATIS * 270.1
CLNC DEL
121.8 275.8
GND CON
121.8 275.8
TOWER
118.85 253.5
TUCSON DEP CON
125.1 269.55



During RADAR operations aircraft will receive RADAR vectors.

DEPARTURE ROUTE DESCRIPTION

TAKEOFF RWY 30: Climbing right turn to intercept DMA TACAN R-316 outbound to BBALL (R-316/57.3 DME) cross BBALL at or below FL180.

BBALL ONE DEPARTURE RWY 30 (BBALL1 • BBALL)

TUCSON, ARIZONA
DAVIS-MONTHAN AFB (KDMA)

DAVIS MONTNAN TWO DEPARTURE (DMA2•DMA)

DAVIS-MONTNAN AFB (KDMA)

TUCSON, ARIZONA

AL-429 [USAF]

ATIS • 220.1

CINC/DEL
121.8 273.8
GND/CON
121.8 273.8
TOWER
118.85 253.5
TUCSON DEP CON
125.1 269.55

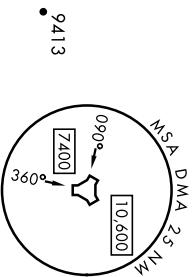
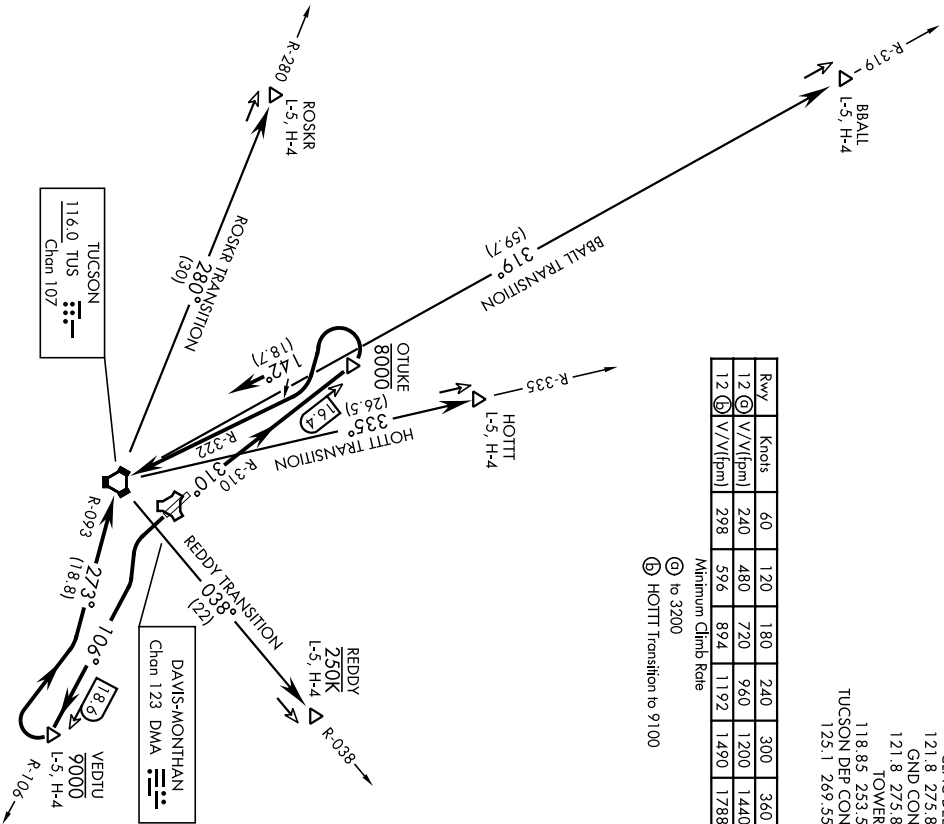
DME required

Rwy	Knots	60	120	180	240	300	360
12 (C)	V/V(fpm)	240	480	720	960	1200	1440
12 (B)	V/V(fpm)	298	596	894	1192	1490	1788

Minimum Climb Rate

ⓐ to 3200

ⓑ HOTT Transition to 9100



During RADAR operations aircraft will receive RADAR vectors to appropriate transition.

(NARRATIVE ON FOLLOWING PAGE)

DAVIS MONTNAN TWO DEPARTURE (DMA2•DMA)

Orig 15JUN23

TUCSON, ARIZONA
DAVIS-MONTNAN AFB (KDMA)

DAVIS MONTHAN TWO DEPARTURE (DMA2•DMA)DAVIS-MONTHAN AFB (KDMA)
TUCSON, ARIZONA

AL-429 [USAF]

DEPARTURE ROUTE DESCRIPTION

▼ TAKEOFF RWY 12: Climbing left turn to intercept TACAN DMA R-106 outbound to VEDTU (DMA 106/18.6) cross VEDTU at or below 9000, turn right and continue climb on TUS R-093 inbound crossing TUS VORTAC at or above 9000.

BBALL TRANSITION (DMA2•BBALL): From over TUS VORTAC via TUS R-319 cross BBALL (TUS 319/59.7) at or above FL210.

HOTTI TRANSITION (DMA2•HOTTI): From over TUS VORTAC via TUS R-335 cross HOTTI (TUS 335/26.5) at or above 14,200.

ROSKR TRANSITION (DMA2•ROSKR): From over TUS VORTAC via TUS R-280 cross ROSKR (TUS 280/30) at or above 15,300.

TAKEOFF RWY 30: Climb via TACAN DMA R-310 and cross OTUKE (DMA 310/16.4) at or below 8000, turn left and continue climb on TUS R-322 crossing TUS VORTAC at or below 10,000.

HOTT TRANSITION (DMA2•HOTT): From over TUS VORTAC via TUS R-335 cross HOTT (TUS 335/26.5) at or above 11,100.

REDDY TRANSITION (DMA2•REDDY): From over TUS VORTAC via TUS R-038 cross REDDY (TUS 038/22) at or above 12,200. Do not exceed 250 KIAS until REDDY.

ROSKR TRANSITION (DMA2•ROSKR): From over TUS VORTAC via TUS R-280 cross ROSKR (TUS 280/30) at or above 13,600.

DAVIS MONTHAN TWO DEPARTURE (DMA2•DMA)

Orig 15JUN23

TUCSON, ARIZONA
DAVIS-MONTHAN AFB (KDMA)

23166

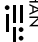
MESCA ONE DEPARTURE RWY 12 (MESCA1 • MESCA)

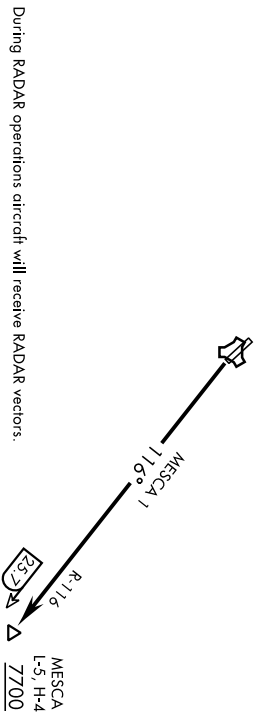
DAVIS-MONTHAN AFB (KDMA)
TUCSON, ARIZONA

AL-429 [USAF]

DME required

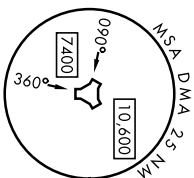
ATIS * 270.1
CLNC DEL
121.8 275.8
GND CON
121.8 275.8
TOWER
118.85 253.5
TUCSON DEP CON
125.1 269.55

DAVIS-MONTHAN
Chan 123 DMA 



During RADAR operations aircraft will receive RADAR vectors.

9413



DEPARTURE ROUTE DESCRIPTION

▼ TAKEOFF RWY 12: Climb direct MESCA (R-116/25.7 DME) on DMA TACAN R-116 and cross at or above 7700.

MESCA ONE DEPARTURE RWY 12 (MESCA1 • MESCA)

TUCSON, ARIZONA
DAVIS-MONTHAN AFB (KDMA)