

(CONLE3.CONLE) 16035

SL-5533 (FAA)

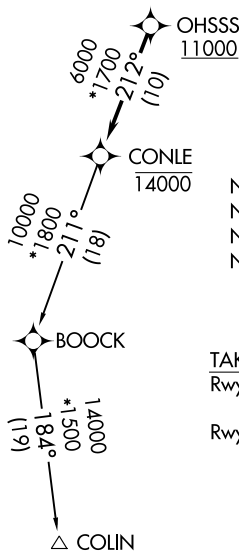
CARROLL COUNTY RGNL/JACK B POAGE FIELD(DMW)

# CONLE THREE DEPARTURE (RNAV)

WESTMINSTER, MARYLAND

AWOS-3  
121.25  
CLNC DEL  
129.525  
UNICOM  
122.7 (CTAF)  
POTOMAC DEP CON  
125.52 291.62

**TOP ALTITUDE:  
ASSIGNED BY ATC**



NOTE: RNAV 1.  
NOTE: DME/DME/IRU or GPS required.  
NOTE: RADAR required.  
NOTE: Turbojets only.

**TAKEOFF MINIMUMS:**

Rwy 16: 400-2<sup>3</sup>/<sub>4</sub> or Standard with minimum climb of 225' per NM to 1300.

Rwy 34: Standard.

**TAKEOFF OBSTACLES:**

- Rwy 16: Trees 1995' from DER, 657' left of centerline, up to 59' AGL/838' MSL.  
Tower 2.3 NM from DER, 2042' left of centerline, 195' AGL/1144' MSL.
- Rwy 34: Trees beginning 105' from DER, 423' left of centerline, up to 87' AGL/886' MSL.  
Trees beginning 967' from DER, 395' right of centerline, up to 85' AGL/864' MSL.  
Terrain and trees beginning 1851' from DER, 123' left of centerline, up to 63' AGL/902' MSL.  
Trees beginning 2603' from DER, 470' right of centerline, up to 69' AGL/868' MSL.

NOTE: Chart not to scale.

### DEPARTURE ROUTE DESCRIPTION

Fly heading and maintain altitude assigned by ATC, expect RADAR vectors to cross OHSSS at or above 11000, then on track 212° to cross CONLE at or below 14000, then on COLIN transition. Expect filed altitude within 10 minutes after departure.

COLIN TRANSITION (CONLE3.COLIN)

**CONLE THREE DEPARTURE (RNAV)**

(CONLE3.CONLE) 04FEB16

WESTMINSTER, MARYLAND

CARROLL COUNTY RGNL/JACK B POAGE FIELD (DMW)

NE-3, 21 JUN 2018 to 19 JUL 2018

NE-3, 21 JUN 2018 to 19 JUL 2018

(TERPZ6.TERPZ) 16035

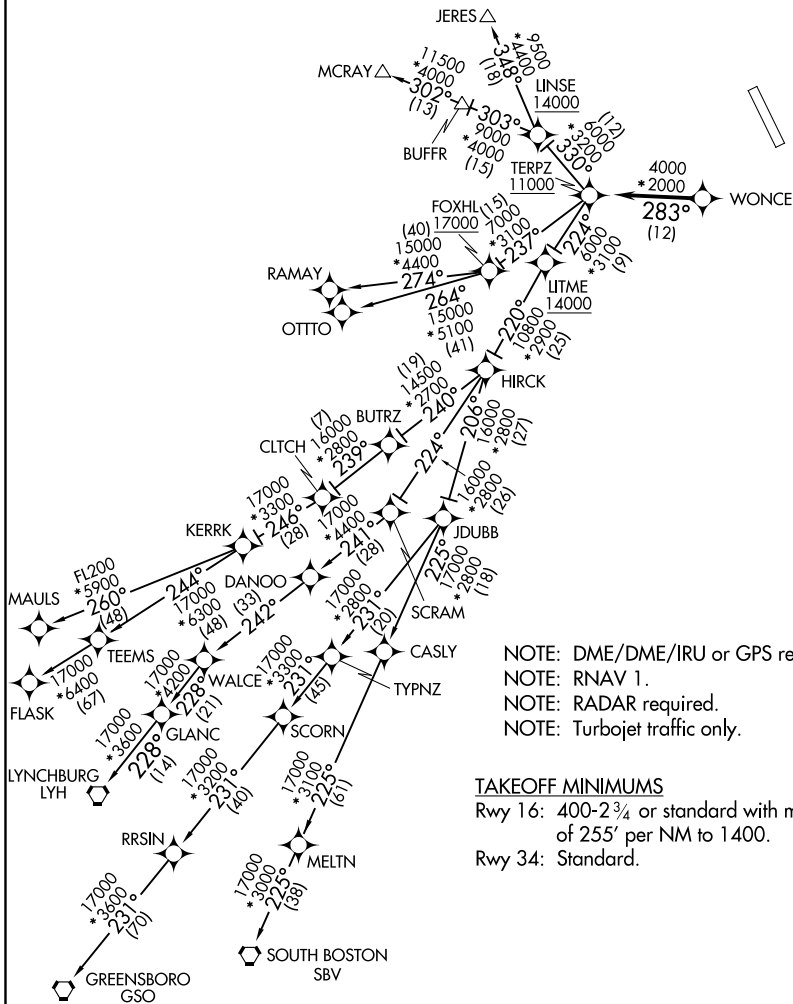
SL-5533 (FAA)

CARROLL COUNTY RGNL/JACK B POAGE FIELD(DMW)  
WESTMINSTER, MARYLAND

# TERPZ SIX DEPARTURE (RNAV)

AWOS-3  
121.25  
CLNC DEL  
129.525  
UNICOM  
122.7 (CTAF)  
POTOMAC DEP CON  
125.52

**TOP ALTITUDE:**  
**RAMAY, OTTTO, MAULS, FLASK,**  
**SBV, LYH, GSO TRANSITIONS:**  
**17000**  
**JERES, MCRAY TRANSITIONS:**  
**16000**



NOTE: DME/DME/IRU or GPS required.  
NOTE: RNAV 1.  
NOTE: RADAR required.  
NOTE: Turbojet traffic only.

### TAKEOFF MINIMUMS

Rwy 16: 400-2<sup>3</sup>/<sub>4</sub> or standard with minimum climb  
of 255' per NM to 1400.  
Rwy 34: Standard.

NOTE: Chart not to scale.

# TERPZ SIX DEPARTURE (RNAV)

(TERPZ6.TERPZ) 04FEB16

CARROLL COUNTY RGNL/JACK B POAGE FIELD(DMW)  
WESTMINSTER, MARYLAND

NE-3, 21 JUN 2018 to 19 JUL 2018

NE-3, 21 JUN 2018 to 19 JUL 2018



DEPARTURE ROUTE DESCRIPTION

Fly heading and maintain altitude assigned by ATC, expect RADAR vectors to WONCE, then on track 283° to cross TERPZ at or above 11000, thence. . . .  
. . . on assigned transition: Departures on JERES and MCRAY transitions maintain 16000. Departures on RAMAY, OTTO, MAULS, FLASK, LYH, GSO, SBV transitions maintain 17000, expect further clearance to filed altitude within 10 minutes after departure.

- FLASK TRANSITION (TERPZ6.FLASK):
- GREENSBORO TRANSITION (TERPZ6.GSO):
- JERES TRANSITION (TERPZ6.JERES):
- LYNCHBURG TRANSITION (TERPZ6.LYH):
- MAULS TRANSITION (TERPZ6.MAULS):
- MCRAY TRANSITION (TERPZ6.MCRAY):
- OTTO TRANSITION (TERPZ6.OTTO):
- RAMAY TRANSITION (TERPZ6.RAMAY):
- SOUTH BOSTON TRANSITION (TERPZ6.SBV):

TAKEOFF OBSTACLES:

- Rwy 16: Trees 1995' from DER, 657' left of centerline, up to 59' AGL/838' MSL.  
Tower 2.3 NM from DER, 2042' left of centerline, 195' AGL/1144' MSL.
- Rwy 34: Trees beginning 105' from DER, 423' left of centerline, up to 87' AGL/886' MSL.  
Trees beginning 967' from DER, 395' right of centerline, up to 85' AGL/864' MSL.  
Terrain and trees beginning 1851' from DER, 123' left of centerline, up to 63' AGL/902' MSL.  
Trees beginning 2603' from DER, 470' right of centerline, up to 69' AGL/868' MSL.

NE-3, 21 JUN 2018 to 19 JUL 2018

NE-3, 21 JUN 2018 to 19 JUL 2018