

WAAS CH <b>65607</b> <b>W16A</b>	APP CRS <b>159°</b>	Rwy Idg TDZE <b>789</b> Apt Elev <b>789</b>	<b>5100</b>
--	------------------------	---	-------------

# RNAV (GPS) RWY 16

CARROLL COUNTY RGNL/JACK B. POAGE FIELD (DMW)

**▼** Baro-VNAV NA when using Frederick altimeter setting. For uncompensated Baro-VNAV systems, LNAV/VNAV NA below -16°C (4°F) or above 54°C (130°F). When local altimeter setting not received, use Frederick altimeter setting and increase all DA 116 feet and all MDA 120 feet; increase LPV all Cats and LNAV Cat C visibility 3/8 mile, and LNAV/VNAV all Cats visibility to 1 3/4 mile and Circling Cat C visibility 1/4 mile. When VGSI inop, Straight-in/Circling Rwy 16 procedure NA at night. DME/DME RNP-0.3 NA. Visibility reduction by helicopters NA.

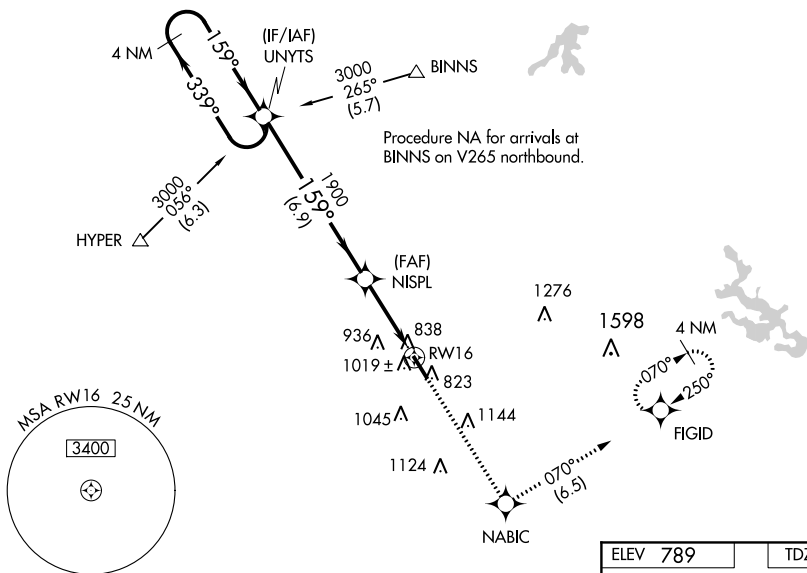
**MISSED APPROACH:** Climb to 2200 direct NABIC then climbing left turn to 3000 on track 070° to FIGID and hold.

AWOS-3  
**121.25**

POTOMAC APP CON  
**125.525 291.625**

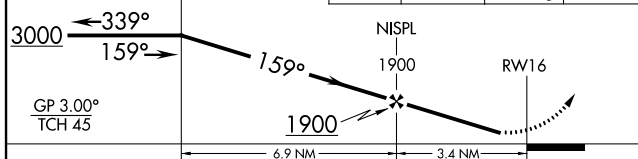
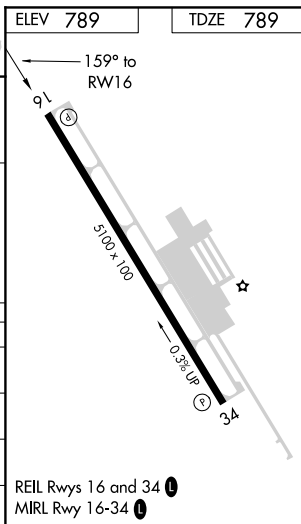
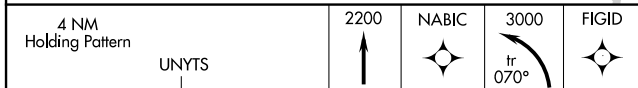
GCO  
**121.725**

UNICOM  
**122.7 (CTAF) 0**



NE-3, 16 AUG 2018 to 13 SEP 2018

NE-3, 16 AUG 2018 to 13 SEP 2018



CATEGORY	A	B	C	D
LPV DA	1081-1 292 (300-1)			NA
LNAV/ VNAV DA	1189-1 3/8 400 (400-1 3/8)			NA
LNAV MDA	1280-1	491 (500-1)	1280-1 3/8 491 (500-1 3/8)	NA
CIRCLING	1320-1	531 (600-1)	1320-1 1/2 531 (600-1 1/2)	NA

REIL Rwsy 16 and 34 0  
MIRL Rwy 16-34 0

# RNAV (GPS) RWY 16

WESTMINSTER, MARYLAND

AL-5533 (FAA)

18172

WAAS CH <b>82117</b> <b>W34A</b>	APP CRS <b>339°</b>	Rwy Idg <b>5100</b> TDZE <b>788</b> Apt Elev <b>789</b>
--	------------------------	---

# RNAV (GPS) RWY 34

CARROLL COUNTY RGNL/JACK B. POAGE FIELD (DMW)

RNP APCH

**▼** For uncompensated Baro-VNAV systems, LNAV/VNAV NA  
**▲** below -16°C (4°F) or above 54°C (130°F).

MISSED APPROACH: Climb to 3000 direct UNYTS and hold

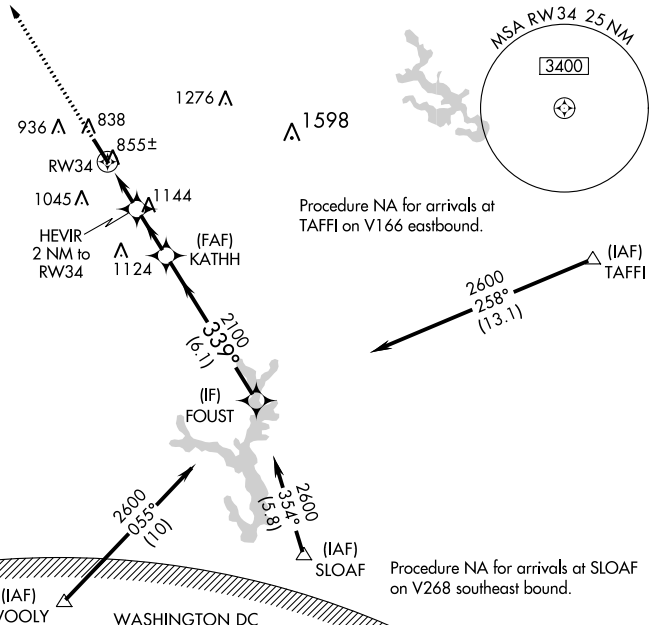
AWOS-3  
**121.25**

POTOMAC APP CON  
**125.525 291.625**

GCO  
**121.725**

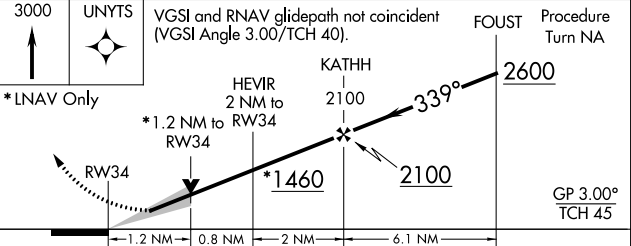
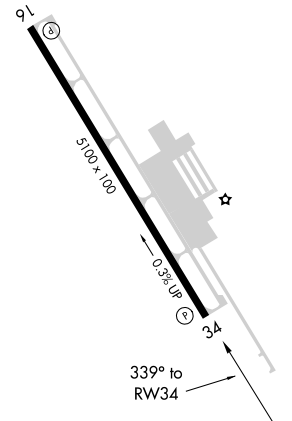
UNICOM  
**122.7 (CTAF) 0**

MISSED APCH FIX



ELEV 789 TDZE 788

WARNING -- WASHINGTON DC SFRA.  
CTC POTOMAC APP CON



CATEGORY	A	B	C	D
LPV DA	988-1	200 (200-1)		NA
LNAV/VNAV DA	1105-1½	317 (400-1½)		NA
LNAV MDA	1180-1	392 (400-1)		NA
CIRCLING	1320-1	531 (600-1)		NA

REIL Rwy 16 and 34  
MIRL Rwy 16-34

WESTMINSTER, MARYLAND  
Amdt 1B 21JUN18

CARROLL COUNTY RGNL/JACK B. POAGE FIELD (DMW)  
39°36'N-77°00'W

# RNAV (GPS) RWY 34

NE-3, 16 AUG 2018 to 13 SEP 2018

NE-3, 16 AUG 2018 to 13 SEP 2018

WESTMINSTER, MARYLAND

AL-5533 (FAA)

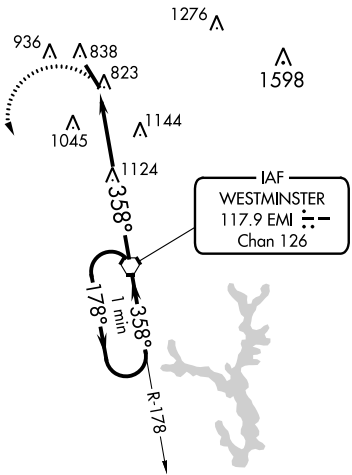
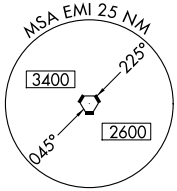
15232

VORTAC EMI <b>117.9</b> Chan <b>126</b>	APP CRS <b>358°</b>	Rwy Idg TDZE Apt Elev	<b>5100</b> <b>788</b> <b>789</b>
---	------------------------	-----------------------------	---

# VOR RWY 34

CARROLL COUNTY RGNL/JACK B. POAGE FIELD (DMW)

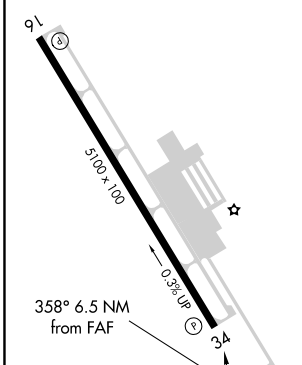
<b>NA</b>		MISSED APPROACH: Climbing left turn to 2900 direct EMI VORTAC and hold.	
AWOS-3 <b>121.25</b>	POTOMAC APP CON <b>125.525 291.625</b>	GCO <b>121.725</b>	UNICOM <b>122.7 (CTAF) 0</b>



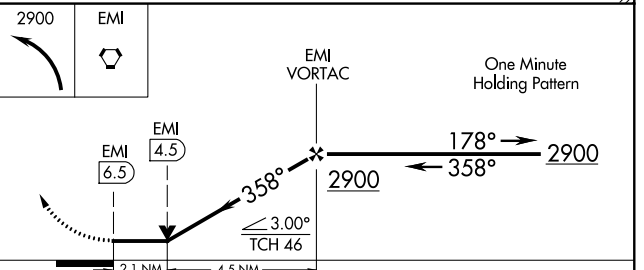
NE-3: 16 AUG 2018 to 13 SEP 2018

NE-3: 16 AUG 2018 to 13 SEP 2018

ELEV <b>789</b>	TDZE <b>788</b>
-----------------	-----------------



WASHINGTON DC METROPOLITAN SFRA  
 WARNING -- WASHINGTON DC SFRA.  
 CTC POTOMAC APP CON



CATEGORY	A	B	C	D
S-34	1480-1	692 (700-1)	1480-2 692 (700-2)	NA
CIRCLING	1480-1	691 (700-1)	1480-2 691 (700-2)	NA

FAF to MAP 6.5 NM					
Knots	60	90	120	150	180
Min:Sec	6:30	4:20	3:15	2:36	2:10

WESTMINSTER, MARYLAND  
Amdt 4B 31AUG06

CARROLL COUNTY RGNL/JACK B. POAGE FIELD (DMW)  
39°36'N - 77°00'W

# VOR RWY 34