

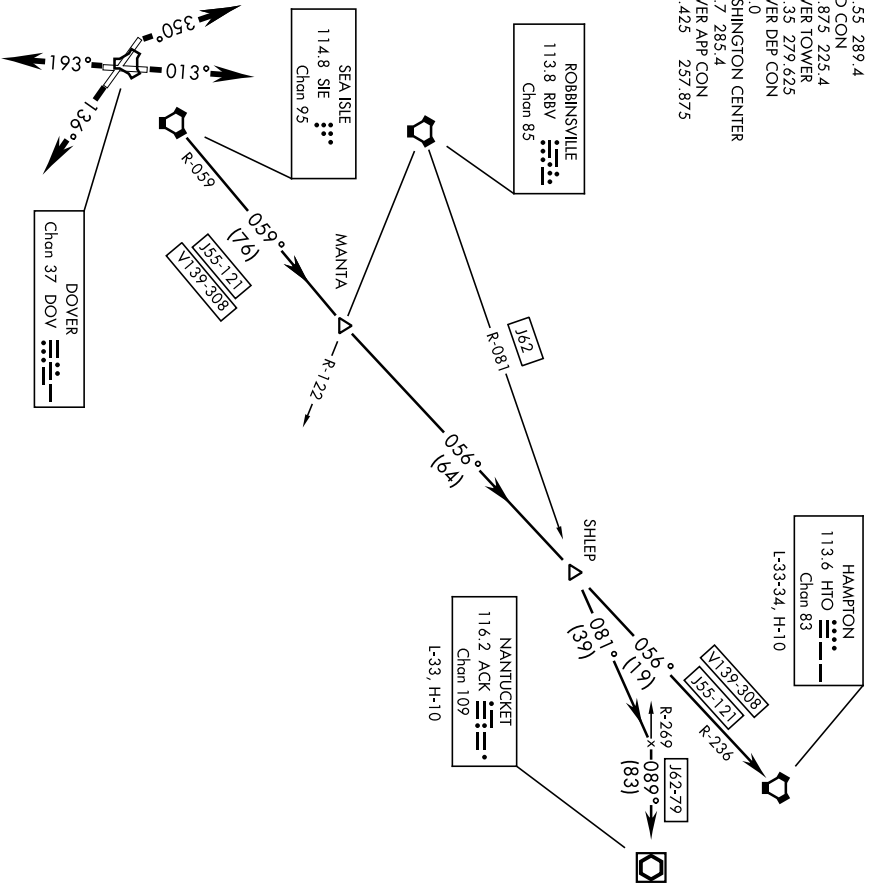


**SEA ISLE-FIVE DEPARTURE (SIE5•SIE)**

SHL-562 [USAF]

DOVER AFB (KDOV)  
DOVER, DELAWARE

ATIS 127.825 273.5  
CLNC DEL  
125.55 289.4  
GND CON  
118.875 125.4  
DOVER TOWER  
126.35 279.625  
DOVER DEP CON  
323.0  
WASHINGTON CENTER  
127.7 285.4  
DOVER APP CON  
132.425 257.875



RWY 32 TODA 10,070'

NOTE: Chart not to scale

**RADAR REQUIRED**

**DEPARTURE ROUTE DESCRIPTION**

- TAKE-OFF RWY 1: Climb on a track of 013° for RADAR vectors to SIE VORTAC. Thence...
- TAKE-OFF RWY 14: Climb on a track of 136° for RADAR vectors to SIE VORTAC. Thence...
- TAKE-OFF RWY 19: Climb on a track of 193° for RADAR vectors to SIE VORTAC. Thence...
- TAKE-OFF RWY 32: Climb on a track of 350° for RADAR vectors to SIE VORTAC. Thence...

Via (Transition) or (Assigned Route).

HAMPTON TRANSITION: (SIE5•HTO) Via SIE R-059 and HTO VORTAC R-236 to HTO.

NANTUCKET TRANSITION: (HIGH ALT ONLY) (SIE5•ACK) Via SIE R-059, HTO VORTAC R-236 and 162 to ACK VOR/DME.

**SEA ISLE-FIVE DEPARTURE (SIE5•SIE)**

DOVER, DELAWARE  
DOVER AFB (KDOV)