

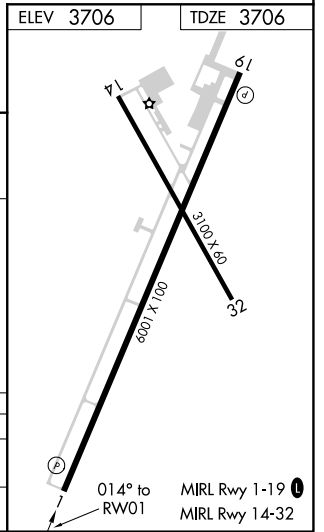
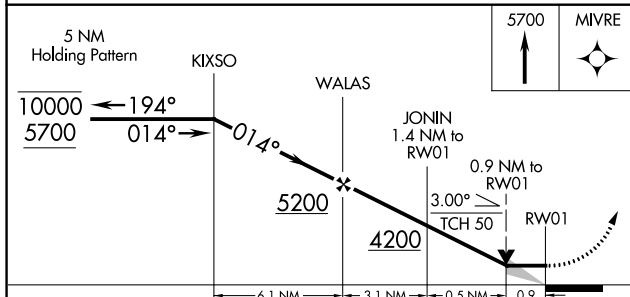
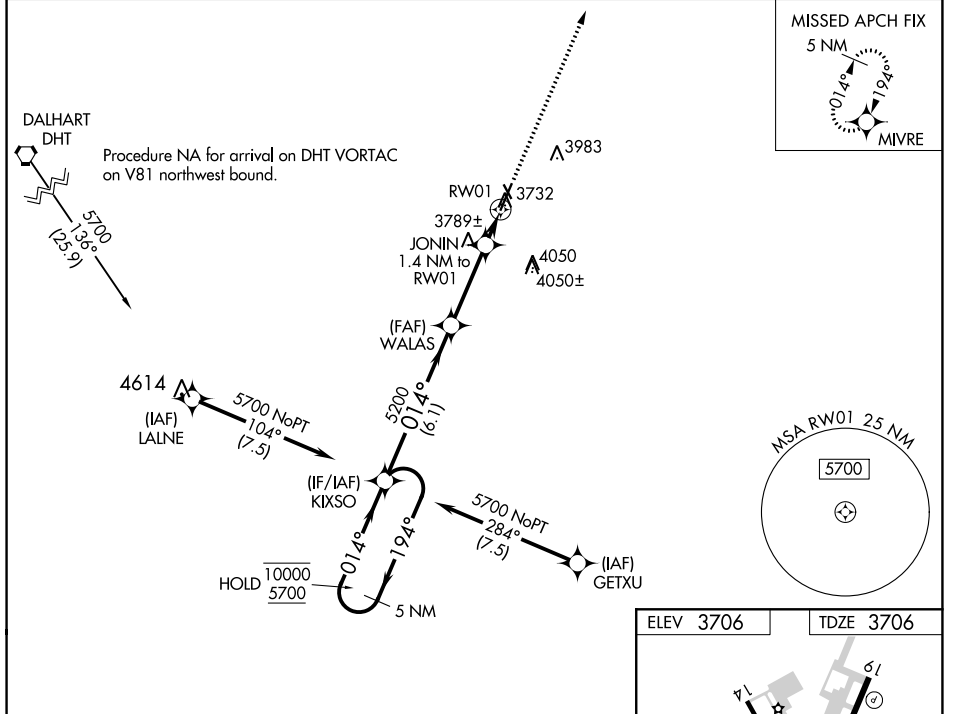
APP CRS	Rwy Idg	6001
014°	TDZE	3706
	Apt Elev	3706

RNAV (GPS) RWY 1

MOORE COUNTY (DUX)

RNP APCH - GPS.	MISSED APPROACH: Climb to 5700 direct MIVRE and hold.
Circling Rwy 14, 32 NA at night.	

AWOS-3 118.075	ALBUQUERQUE CENTER 127.85 285.475	UNICOM 122.8 (CTAF) 0
--------------------------	---	---------------------------------



CATEGORY	A	B	C	D
LNAV MDA	4040-1 334 (400-1)			
CIRCLING	4100-1 394 (400-1)	4300-1 594 (600-1)	4400-2 694 (700-2)	4400-2 1/4 694 (700-2 1/4)

SC-2, 22 FEB 2024 to 21 MAR 2024

SC-2, 22 FEB 2024 to 21 MAR 2024

APP CRS	Rwy Idg	6001
194°	TDZE	3701
	Apt Elev	3706

RNAV (GPS) RWY 19

MOORE COUNTY (DUX)

RNP APCH - GPS.

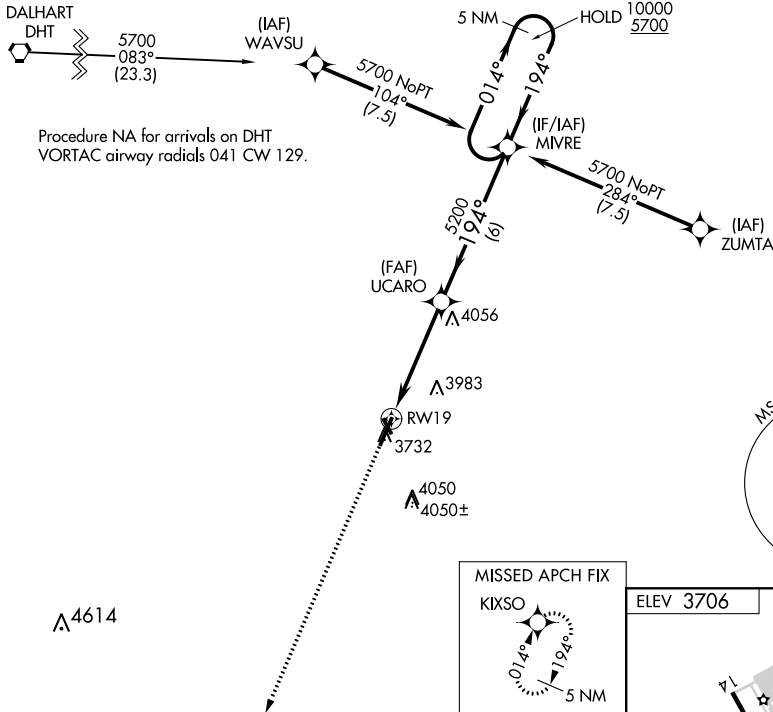
▼ Circling Rwy 14, 32 NA at night.
▲ Rwy 19 helicopter visibility reduction below 3/4 SM NA.

MISSED APPROACH: Climb to 5700 direct KIXSO and hold.

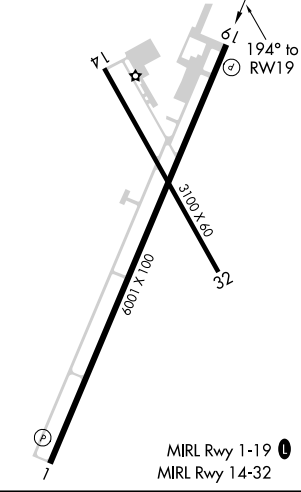
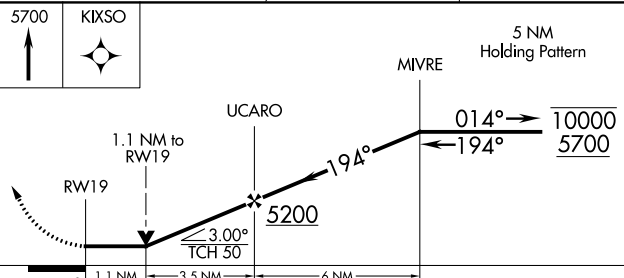
AWOS-3
118.075

ALBUQUERQUE CENTER
127.85 285.475

UNICOM
122.8 (CTAF) 0



ELEV 3706	TDZE 3701
-----------	-----------



CATEGORY	A	B	C	D
LNVA MDA	4100-1	399 (400-1)	4100-1 1/8	399 (400-1 1/8)
C CIRCLING	4100-1 394 (400-1)	4300-1 594 (600-1)	4400-2 694 (700-2)	4400-2 1/4 694 (700-2 1/4)

SC-2, 22 FEB 2024 to 21 MAR 2024

SC-2, 22 FEB 2024 to 21 MAR 2024