

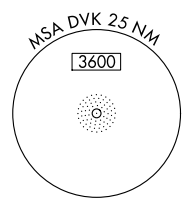
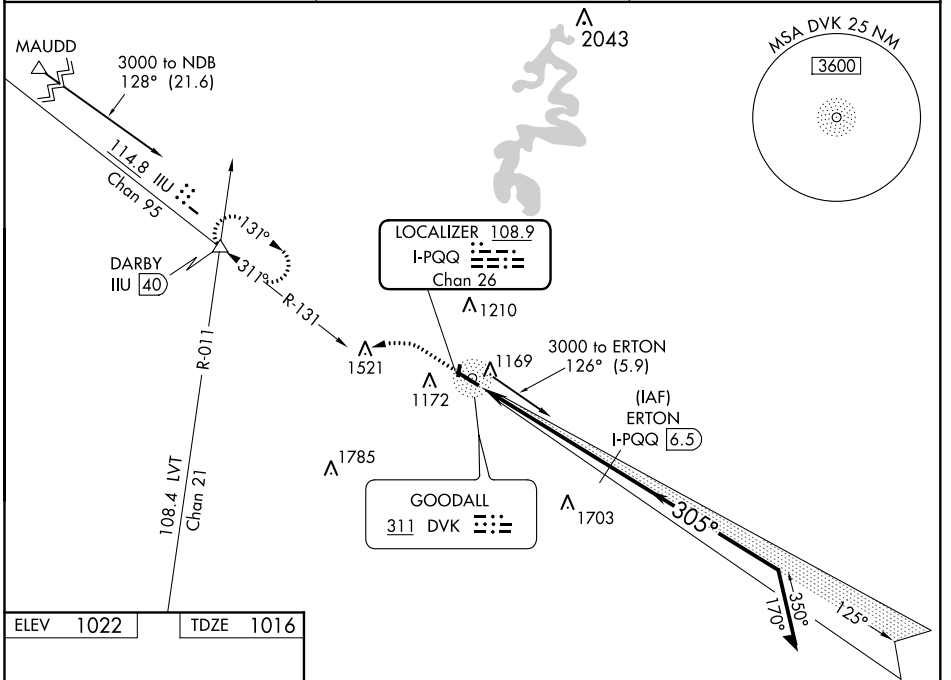
LOC/DME I-PQQ 108.9 Chan 26	APP CRS 305°	Rwy Idg TDZE Apt Elev	5000 1016 1022
---	------------------------	-----------------------------	---

LOC RWY 30
STUART POWELL FIELD (DVK)

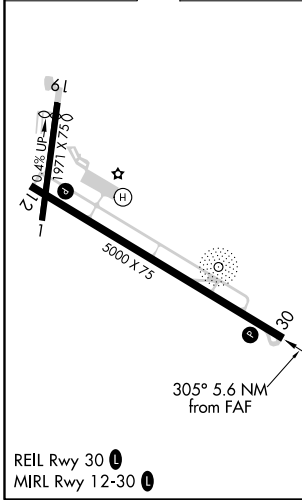
▽ When local altimeter setting not received, use Lexington altimeter setting and increase all MDA 80 feet; increase S-30 Cat C-D visibility and Circling Cat C-D visibility 1/4 mile.
△ NA Rwy 30 helicopter visibility reduction below 3/4 SM NA. Rwy 1, 19 helicopter visibility reduction below 1 SM NA. DME required. Circling Rwy 1, 19 NA at night.

MISSED APPROACH: Climb to 2000 then climbing left turn to 3000 on heading 260° and IIL R-131 to DARBY INT and hold.

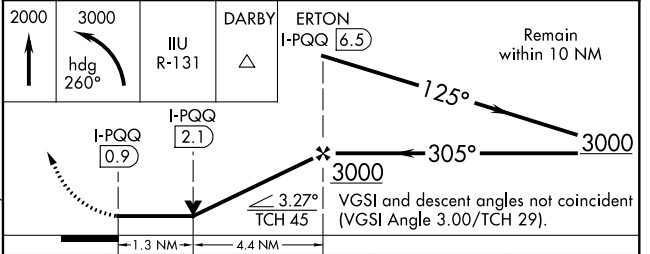
AWOS-3 128.325	LEXINGTON APP CON 120.15 259.3	UNICOM 122.8 (CTAF)
--------------------------	--	-------------------------------



ELEV 1022	TDZE 1016
-----------	-----------



DME REQUIRED



CATEGORY	A	B	C	D
S-30	1440-1	424 (500-1)	1440-1 1/4	424 (500-1 1/4)
CIRCLING	1480-1	1560-1	1560-1 1/2	1720-2 1/4
	458 (500-1)	538 (600-1)	538 (600-1 1/2)	698 (700-2 1/4)

SE-1, 05 NOV 2020 to 03 DEC 2020

SE-1, 05 NOV 2020 to 03 DEC 2020

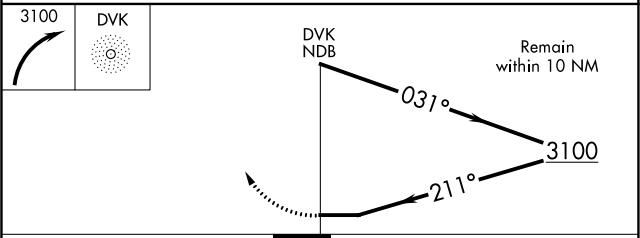
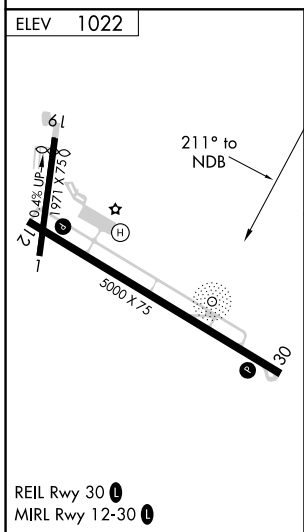
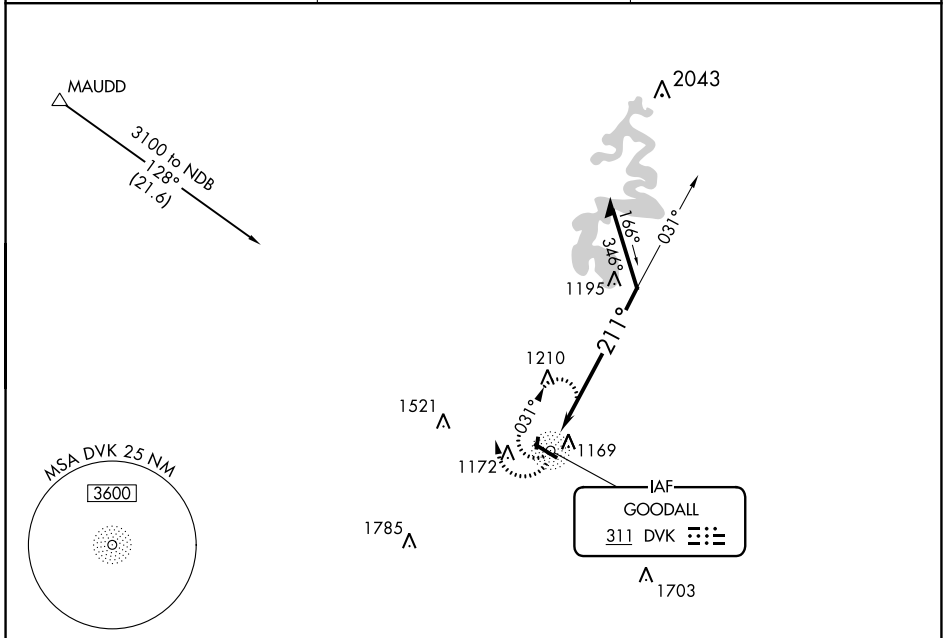
NDB DVK 311	APP CRS 211°	Rwy Idg TDZE Apt Elev 1022	N/A N/A
-----------------------	------------------------	--	--------------------------

NDB-A
STUART POWELL FIELD (DVK)

⚠ When local altimeter setting not received, use Lexington altimeter setting and increase all MDAs 80 feet and visibility Cats C and D ¼ mile. Rwy 1, 19 helicopter visibility reduction below 1 SM NA. Circling Rwy 1, 19 NA at night.

MISSED APPROACH: Climbing right turn to 3100 in DVK NDB holding pattern.

AWOS-3 128.325	LEXINGTON APP CON 120.15 259.3	UNICOM 122.8 (CTAF) 0
--------------------------	--	---------------------------------



CATEGORY	A	B	C	D
CIRCLING	1600-1	578 (600-1)	1600-1½ 578 (600-1½)	1720-2¼ 698 (700-2¼)

SE-1, 05 NOV 2020 to 03 DEC 2020

SE-1, 05 NOV 2020 to 03 DEC 2020

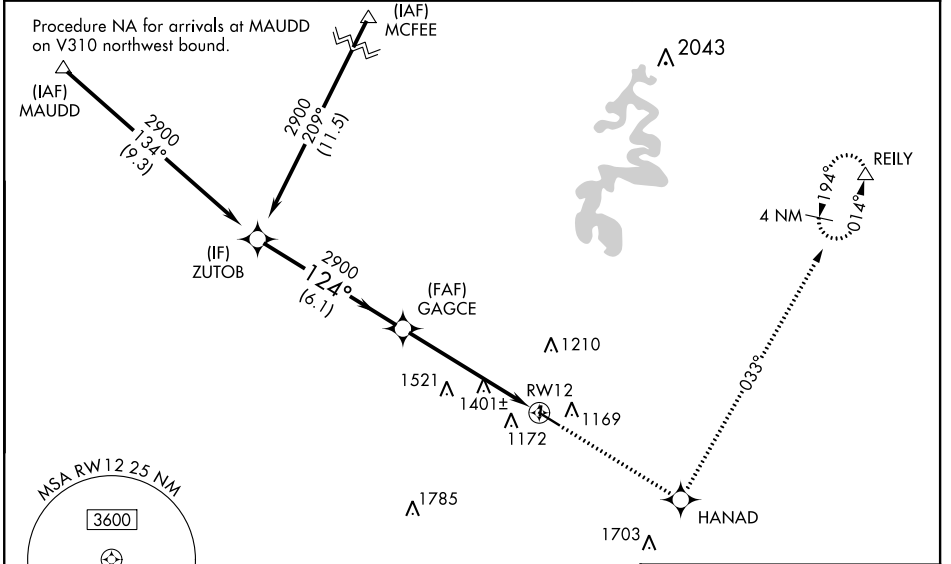
WAAS CH 93706 W12A	APP CRS 124°	Rwy Idg TDZE Apt Elev	5000 1017 1022
--	------------------------	-----------------------------	---

RNAV (GPS) RWY 12

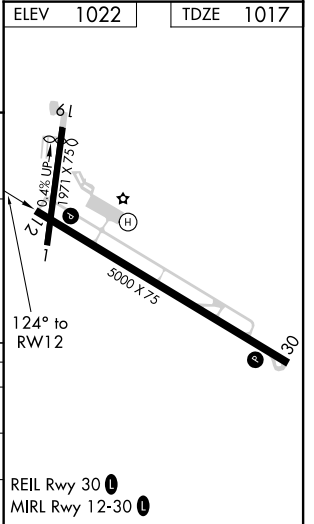
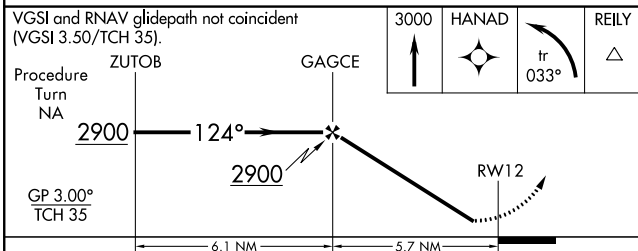
STUART POWELL FIELD (DVK)

RNP APCH.	<p>When local altimeter setting not received, use Lexington altimeter setting; increase all DA/MDA 80 feet; increase LPV all Cats and LNAV/VNAV all Cats and LNAV all Cats visibility ¼ SM. For uncompensated Baro-VNAV systems, LNAV/VNAV NA below -17° C or above 47° C. Baro-VNAV NA when using Lexington altimeter setting. Rwy 12 helicopter visibility reduction below ¾ SM NA.</p>	<p>MISSED APPROACH: Climb to 3000 direct HANAD and left turn on 033° track to REILY and hold.</p>
-----------	---	---

AWOS-3 128.325	LEXINGTON APP CON 120.15 259.3	UNICOM 122.8 (CTAF)
--------------------------	--	-------------------------------



ELEV 1022	TDZE 1017
-----------	-----------



CATEGORY	A	B	C	D
LPV DA	1357-1¼		340 (400-1¼)	
LNAV/VNAV DA	1785-2¾		768 (800-2¾)	
LNAV MDA	1660-1	643 (700-1)	1660-1¼	1660-2
			643 (700-1¼)	643 (700-2)

SE-1, 05 NOV 2020 to 03 DEC 2020

SE-1, 05 NOV 2020 to 03 DEC 2020

WAAS CH 70506 W30A	APP CRS 305°	Rwy Idg TDZE Apt Elev	5000 1016 1022
--	------------------------	-----------------------------	---

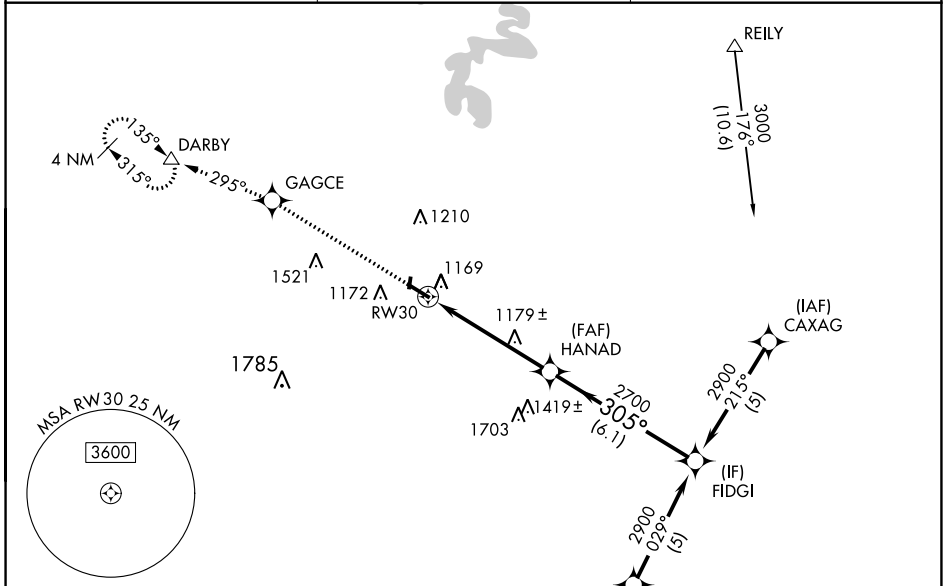
RNAV (GPS) RWY 30

STUART POWELL FIELD (DVK)

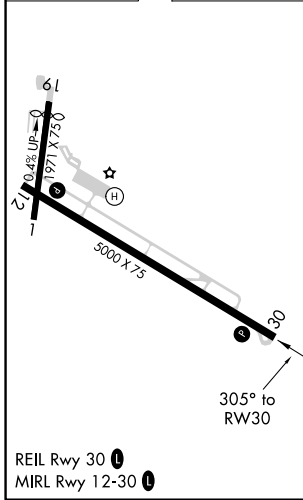
When local altimeter setting not received, use Lexington altimeter setting and increase all DAs/MDAs 80 feet, LPV all visibilities ¼ mile, LNAV/VNAV all visibilities ¼ mile, LNAV Cat C/D and Circling Cat C/D ¼ mile. For uncompensated Baro-VNAV systems, LNAV/VNAV NA below -17° C (2° F) or above 46° C (114° F). VDP and Baro-VNAV NA when using Lexington altimeter setting. DME/DME RNP-0.3 NA. Rwy 30 helicopter visibility reduction below ¾ SM NA. Rwy 1, 19 helicopter visibility reduction below 1 SM NA. Circling Rwy 1, 19 NA at night.

MISSED APPROACH: Climb to 3000 direct GAGCE and on 295° track to DARBY and hold.

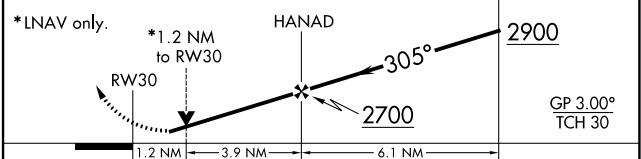
AWOS-3 128.325	LEXINGTON APP CON 120.15 259.3	UNICOM 122.8 (CTAF)
--------------------------	--	-------------------------------



ELEV 1022	TDZE 1016
-----------	-----------



3000	GAGCE	Ir 295°	DARBY	Procedure Turn NA
------	-------	---------	-------	-------------------



CATEGORY	A	B	C	D
LPV DA	1282-1		266 (300-1)	
LNAV/VNAV DA	1439-1½		423 (500-1½)	
LNAV MDA	1440-1	424 (500-1)	1440-1¼	424 (500-1¼)
CIRCLING	1480-1 458 (500-1)	1560-1 538 (600-1)	1560-1½ 538 (600-1½)	1720-2¼ 698 (700-2¼)

SE-1, 05 NOV 2020 to 03 DEC 2020

SE-1, 05 NOV 2020 to 03 DEC 2020