

JOOLS ONE ARRIVAL (RNAV)  
(JOOLS.JOOLS1) 15JUN23

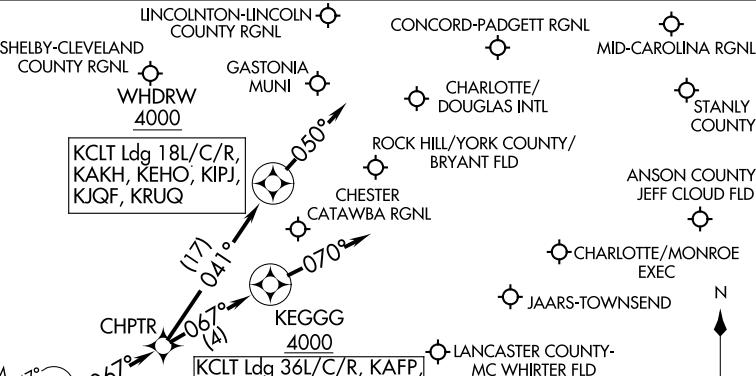
JOOLS ONE ARRIVAL (RNAV)  
(JOOLS.JOOLS1) 23166

AL-78 (FAA)

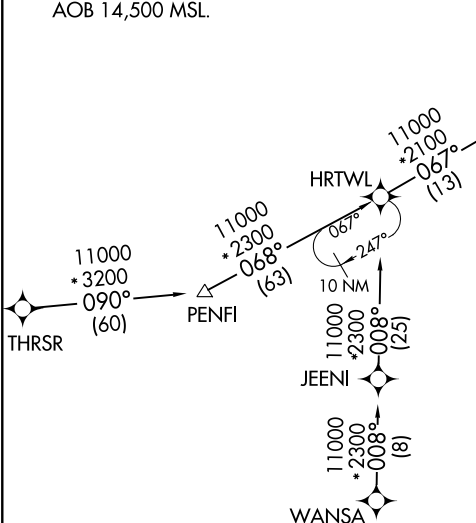
CHARLOTTE NORTH CAROLINA

CHARLOTTE APP CON  
135.6 377.15  
CLT D-ATIS ARR  
121.15  
JQF ATIS \*  
133.675

RNAV 1 - DME/DME/IRU or GPS.  
RADAR required.



Use CAUTION: Parachute jumping 17 NM NE of  
CHPTR, 3 NM radius KDCM (Chester-Catawba Rgnl),  
AOB 14,500 MSL.



NOTE: Chart not to scale.

ARRIVAL ROUTE DESCRIPTION

THRSR TRANSITION (THRSR.JOOLS1)  
WANSA TRANSITION (WANSA.JOOLS1)

KCLT: From JOOLS on track 067° to CHPTR.

LANDING RUNWAYS 18L/C/R: From CHPTR on track 041° to cross WHDRW at or above 4000, then on track 050°. Expect RADAR vectors to final approach course.

LANDING RUNWAYS 36L/C/R: From CHPTR on track 067° to cross KEGGG at or above 4000, then on track 070°. Expect RADAR vectors to final approach course.

LANDING KAKH/KRUQ/KEHO/KJQF/KIPJ: From JOOLS on track 067° to CHPTR, then on track 041° to cross WHDRW at or above 4000, then on track 050°. Expect RADAR vectors to final approach course.

LANDING KDCM/KEQY/KUZA/KAFP/N52/KVUJ/KLKR: From JOOLS on track 067° to CHPTR, then on track 067° to cross KEGGG at or above 4000, then on track 070°. Expect RADAR vectors to final approach course.

CHARLOTTE APP CON  
125.35 257.2  
CLT D-ATIS ARR  
121.15

NOTE: RADAR required.  
NOTE: VXV transition for turbojet aircraft only.  
NOTE: HMV and SOT transitions for turboprop/prop aircraft only.

(JALIT.LINN3) 22307  
LINN THREE ARRIVAL

AL-78 (FAA)

CHARLOTTE, NORTH CAROLINA

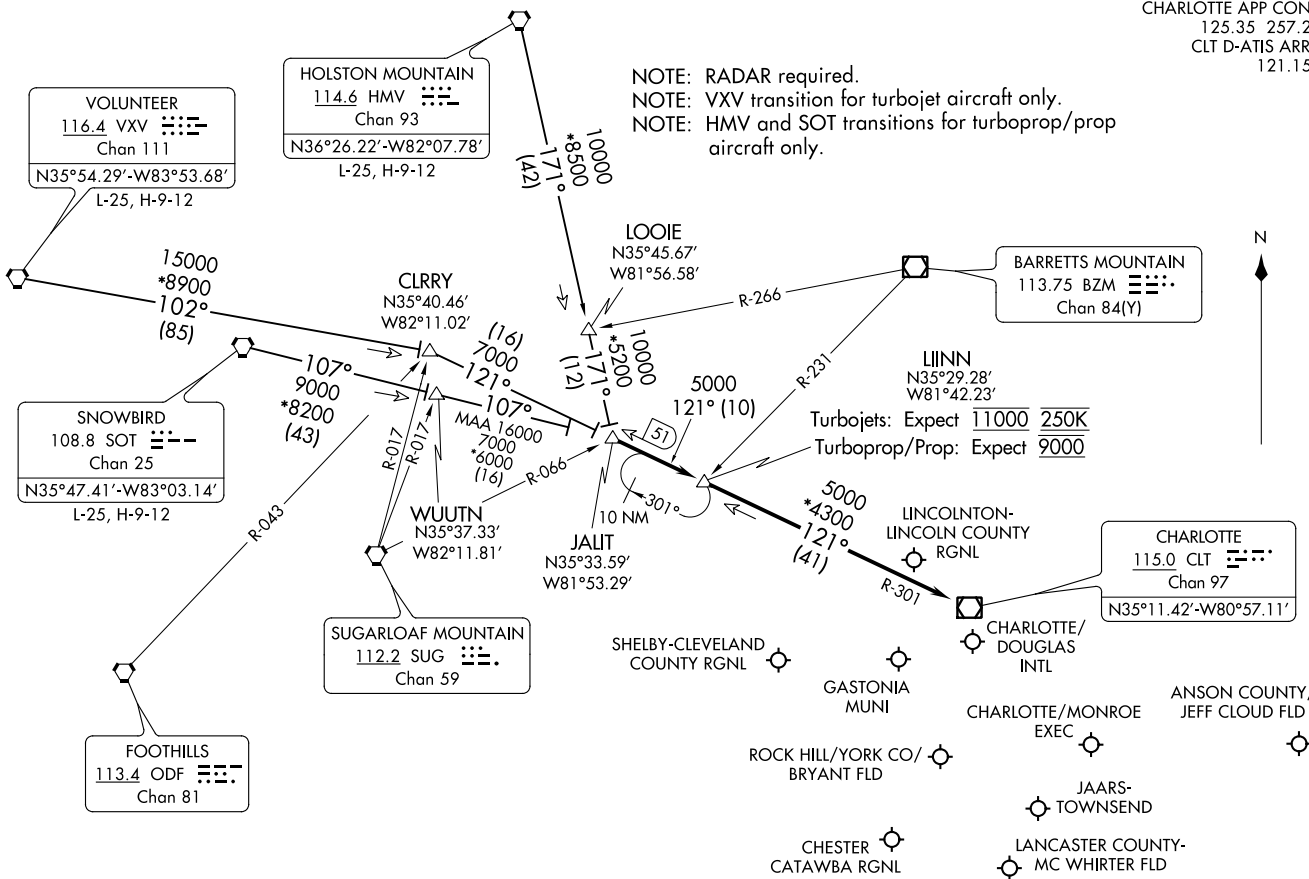


(NARRATIVE ON FOLLOWING PAGE)

NOTE: Chart not to scale.

LINN THREE ARRIVAL  
(JALIT.LINN3) 08NOV18

CHARLOTTE, NORTH CAROLINA



VOLUNTEER  
116.4 VXV  
Chan 111  
N35°54.29'-W83°53.68'  
L-25, H-9-12

HOLSTON MOUNTAIN  
114.6 HMV  
Chan 93  
N36°26.22'-W82°07.78'  
L-25, H-9-12

SNOWBIRD  
108.8 SOT  
Chan 25  
N35°47.41'-W83°03.14'  
L-25, H-9-12

CLRRY  
N35°40.46'  
W82°11.02'

WUJTN  
N35°37.33'  
W82°11.81'

SUGARLOAF MOUNTAIN  
112.2 SUG  
Chan 59

JALIT  
N35°33.59'  
W81°53.29'

LOOIE  
N35°45.67'  
W81°56.58'

BARRETTS MOUNTAIN  
113.75 BZM  
Chan 84(Y)

LINN  
N35°29.28'  
W81°42.23'

CHARLOTTE  
115.0 CLT  
Chan 97  
N35°11.42'-W80°57.11'

LINCOLN-  
LINCOLN COUNTY  
RGNL

CHARLOTTE/  
DOUGLAS  
INTL

CHARLOTTE/MONROE  
EXEC

ANSON COUNTY/  
JEFF CLOUD FLD

ROCK HILL/YORK CO/  
BRYANT FLD

GASTONIA  
MUNI

JAARS-  
TOWNSEND

CHESTER  
CATAWBA RGNL

LANCASTER COUNTY-  
MC WHIRTER FLD

SHELBY-CLEVELAND  
COUNTY RGNL

ARRIVAL ROUTE DESCRIPTION

HOLSTON MOUNTAIN TRANSITION (HMV.LIINN3): From over HMV VORTAC on HMV R-171 to JALIT. Thence . . . .

SNOWBIRD TRANSITION (SOT.LIINN3): From over SOT VORTAC on SOT R-107 to JALIT. Thence . . . .

VOLUNTEER TRANSITION (VXV.LIINN3): From over VXV VORTAC on VXV R-102 to CLRRY, then on CLT R-301 to JALIT. Thence . . . .

. . . . from JALIT on CLT R-301 to LIINN, then on CLT R-301 to CLT VOR/DME. Expect RADAR vectors to destination airport or final approach course prior to CLT VOR/DME.

SE-2, 22 FEB 2024 to 21 MAR 2024

SE-2, 22 FEB 2024 to 21 MAR 2024

# MAJIC FOUR ARRIVAL

CHARLOTTE, NORTH CAROLINA

CHARLOTTE APP CON  
126.15 282.325  
CLT D-ATIS ARR  
121.15

MAYOS  
N36°19.59'-W79°59.79'  
TURBOJET VERTICAL NAVIGATION  
PLANNING INFORMATION  
Expect FL220

MAJIC  
N35°48.71'-W80°26.17'  
TURBOJET VERTICAL NAVIGATION  
PLANNING INFORMATION  
Expect 13000 250K

SUDSY  
N35° 44.58'  
W80° 29.63'

MID-CAROLINA  
RGNL

CHARLOTTE  
115.0 CLT  
Chan 97  
N35°11.42'-W80°57.11'

CHARLOTTE/MONROE  
EXEC

JAARS-TOWNSEND

LANCASTER COUNTY-  
MC WHIRTER FLD

CHESTER CATAWBA  
RGNL

ROCK HILL/YORK  
COUNTY/BRYANT  
FLD

GASTONIA  
MUNI

SHELBY-  
CLEVELAND  
COUNTY RGNL

LINCOLN-  
LINCOLN COUNTY  
RGNL

CHARLOTTE/  
DOUGLAS  
INTL

15 NM  
039°  
14000  
219°  
(48)

KELLS  
N36° 35.17'  
W79° 47.17'

RALEIGH/DURHAM  
117.2 RDU  
Chan 119  
N35° 52.35'  
W78° 47.00'  
L-36, H-9-12

LIBERTY  
113.0 LIB  
Chan 77  
N35°48.70'  
W79°36.76'

CAUTION: Parachute jumping 6 NM south-  
southwest of SUDSY, 5 NM radius of (KRUC)  
Mid-Carolina Rgnl, at or below 14500 MSL.

NOTE: DME required.  
NOTE: RADAR required for LIB R-273.  
NOTE: Landing other than Charlotte/  
Douglas Intl; expect RADAR  
vectors to destination airport  
or final approach course prior  
to CLT 10 DME fix.

NOTE: Chart not to scale.

## ARRIVAL ROUTE DESCRIPTION

LIBERTY TRANSITION (LIB.MAJIC4): From over LIB VORTAC on LIB R-273 to MAJIC INT. Thence. . .

LYNCHBURG TRANSITION (LYH.MAJIC4): From over LYH VOR/DME on LYH R-219 and CLT R-039 to MAJIC INT. Thence. . .

. . . From over MAJIC on CLT R-039 to:

LANDING NORTH: CLT VOR/DME. Expect RADAR vectors to final approach course prior to the CLT 5 DME fix.

LANDING SOUTH: GIZMO. Expect RADAR vectors to final approach course.

# MAJIC FOUR ARRIVAL

(MAJIC.MAJIC4) 26MAR20

CHARLOTTE, NORTH CAROLINA

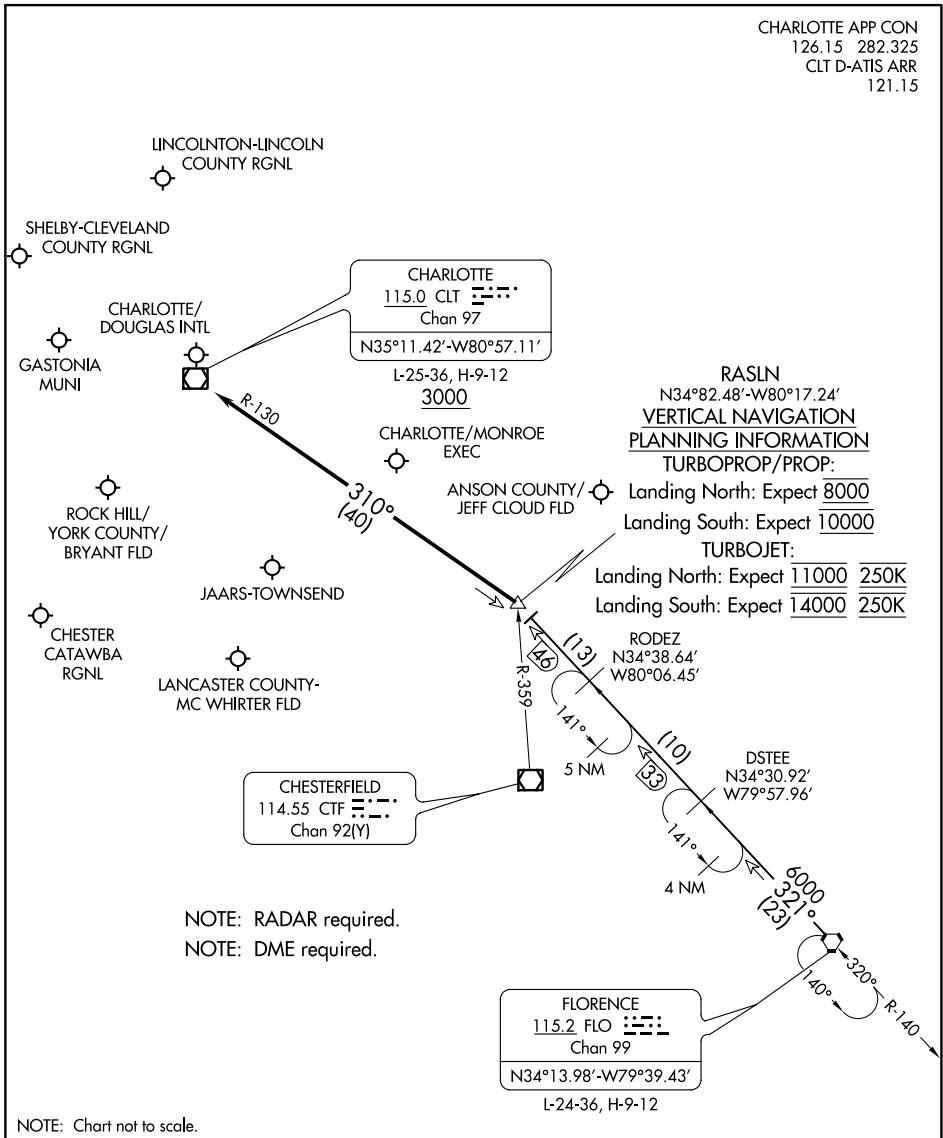
SE-2, 22 FEB 2024 to 21 MAR 2024

SE-2, 22 FEB 2024 to 21 MAR 2024

# RASLN THREE ARRIVAL

CHARLOTTE, NORTH CAROLINA

CHARLOTTE APP CON  
126.15 282.325  
CLT D-ATIS ARR  
121.15



SE-2, 22 FEB 2024 to 21 MAR 2024

SE-2, 22 FEB 2024 to 21 MAR 2024

## ARRIVAL ROUTE DESCRIPTION

FLORENCE TRANSITION (FLO.RASLN3): From over FLO VORTAC on FLO R-321 to RASLN INT. Thence . . . .

. . . . from RASLN on CLT R-130 to cross CLT VOR/DME at or above 3000. Expect RADAR vectors to destination airport or final approach course prior to CLT VOR/DME.

# RASLN THREE ARRIVAL

CHARLOTTE, NORTH CAROLINA